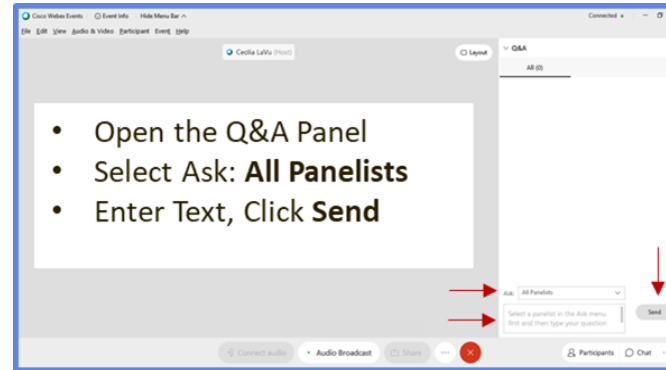


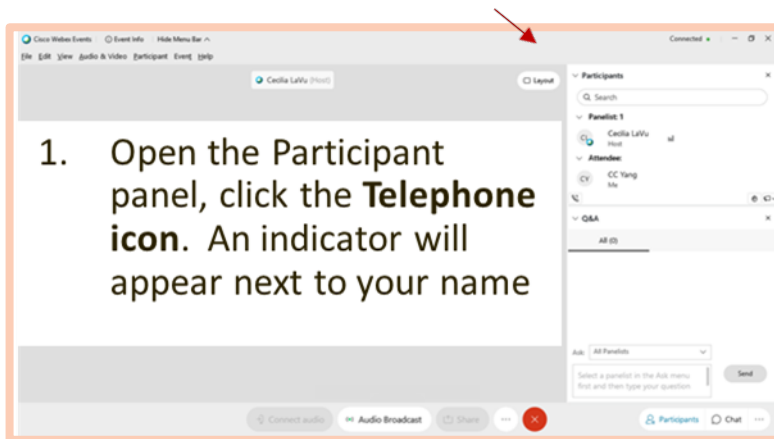
Welcome to Provider Office Hours

We will begin shortly. During the event, please use one of these methods to ask a question:

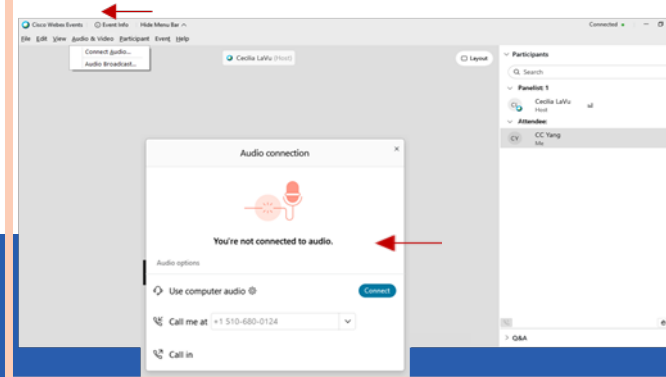
OPTION #1: Via the Q&A Panel



OPTION #2: Request to Join Audio



2. Once permission is granted, click on the **Audio Video Tab**, click on **Connect Audio**
3. an **Audio Connection** dialogue will open, select the audio option, click **Connect**



Agenda

Item	Time
Vaccine Updates <ul style="list-style-type: none">• Allocation and Distribution - Amy Pine• Provider Enrollment and CalVax - Nisha Gandhi• System - Jenna Herford and Claudia Aguiluz• Provider Call Center Q&A - Brenton Louie	9:00 AM – 9:30 AM
Q&A	9:30 AM – 10:00 AM

Vaccine Updates

Allocation and Distribution

- Vaccine Supply is low and will likely remain low
- CA receives dose allocations on Tuesdays from CDC then allocates to Local Health Jurisdictions (LHJs) and Multi County Entities (MCEs)
 - LHJs approve requests from providers before orders can be placed
- 485,800 First doses (241,800 Pfizer doses and 244,000 Moderna doses) – CA's most recent allocation

Local Health Jurisdiction/MCE Allocation

Total CA Allocation

LTC Pharmacy
Partnership

LHJ & State MCE Allocation (80%)

Hospital MCE
Allocation
(20%)

LHJ

LHJ

LHJ

LHJ

LHJ

LHJ

LHJ

LHJ

LHJ

LHJ

State MCE

MCE

MCE

MCE

Allocation Denominator = Phase 1A Population (LTCF residents and Health Care Personnel by county of employment) AND 65+ resident population

Allocation and Distribution

Group	Description	Numbers as of 1/21/2021
Allocation Data		
	Total First Doses Allocated	3,116,725
	Total Second Doses Allocated	1,677,100
	Total Doses to CDC	681,525
	Total Doses Allocated to California including CDC	5,475,350
	Total Doses to California Excluding CDC	4,793,825
Shipping Data		
	Total Doses Shipped	3,989,850
Administration Data Count of People		
	Total People with at least 1 Dose Administered	1,477,412
	Total People with 2 Doses Administered	321,470
Administration Data Count of Doses		
	Total Doses Administered in CDC Pharmacy Program	160,416
	Total Doses Administered and Reported to CA	1,795,176

Vaccines - Eligibility

www.covid19.ca.gov/vaccines

Vaccine prioritization and outreach by providers

All vaccination providers should:

1. Continue vaccinating all persons in Phase 1A
2. Begin vaccinating persons 65 years of age or older. Based on available supply, prioritize and target outreach efforts as follows:
 - **Age**, with persons 75 years or older prioritized due to increased risk of mortality and other severe disease
 - **Occupational risk exposure**, with individuals prioritized who work in sectors with high occupational exposure as listed in Phase 1B, Tier 1
 - **Residence in vulnerable communities**, as determined by the California Healthy Places Index or comparable local health department knowledge, to address equity and communities disproportionately affected by the pandemic

Phase 1A

About 3 million people

- Healthcare workers
- Long-term care residents

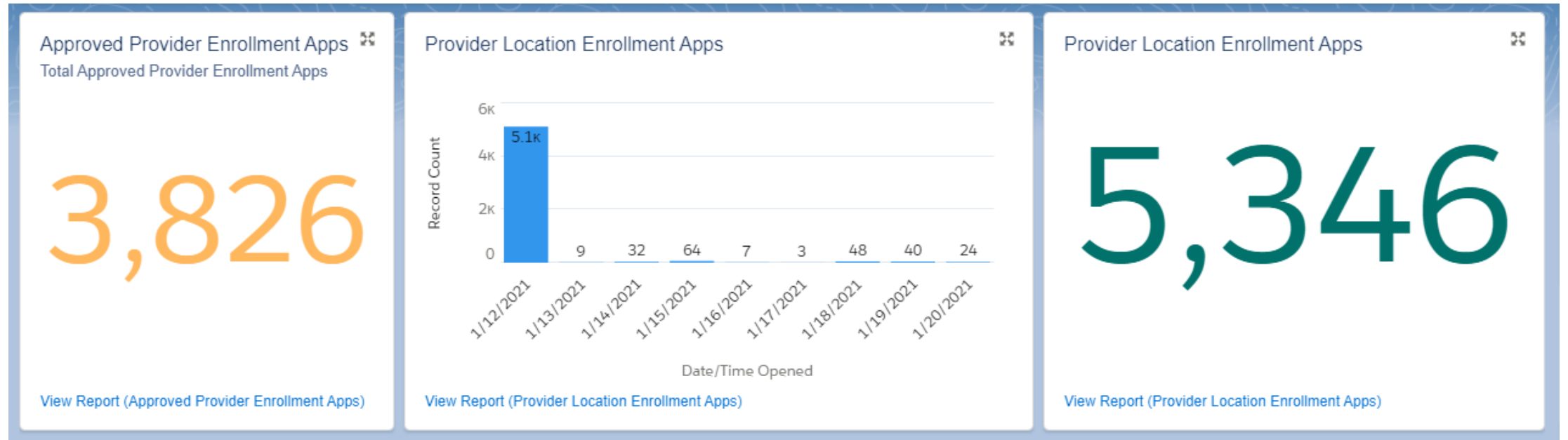
See [CDPH Allocation Guidelines for Phase 1a](#)

Phase 1B

1B Tier One:

- Individuals 65 and older
- Those at risk of exposure at work in the following sectors:
 - Education and childcare
 - Emergency services
 - Food and agriculture

Provider Enrollment



What You Can Find in CalVax

- Adding New Locations
- Updating information
- Submitting vaccine requests

Status of Enrollment in CalVax

- Invitation sent
- In Progress
- E-signature requested
- E-signature received
- **Submitted**-*Part B has been submitted for CDPH but has not been assigned to staff yet*
- **In Review**-*Part B is now under active review*
- **Follow Up**-*clarification or additional information needed*
- **Approved**-vaccine requests can now be placed

CalVax Provider System Updates

CalVax Provider System Updates



What's on the horizon?

CalVax Provider overview and training (411 Sessions) will be offered on the following days:

- Monday Jan 25th 8am-9am
- Wednesday Jan 27th 1pm-2pm
- Friday Jan 29th 1pm-2pm

Topics:

- Registering for the COVID-19 Vaccine Program through CalVax Provider
- Enrolling your organization
- Setting up locations
- Requesting Vaccine

CalVax User Support Tools & Channels



CalVax Bulletin: Lookout for the new CalVax Provider Bulletin, our weekly newsletter. You'll get the latest updates on releases, training material available in the system, new functionality, and relevant stats.



411 Sessions: 411 Sessions are opportunities to watch CalVax Provider system demos and learn more about navigation and best practices.



Email Updates: Email updates highlight important system release dates and provides key information about new system functionalities and enhancements.



COVID Call Center: If you have questions regarding the **COVID-19 Vaccine Program**, please contact covidcallcenter@cdph.ca.gov or call (833) 502-1245.

Help Desk: Please direct all CalVax Provider **technical questions** (password resets, etc.) to HelpDesk.CalVax@calvax.accenture.com

Provider Call Center Q&A – Brenton Louie

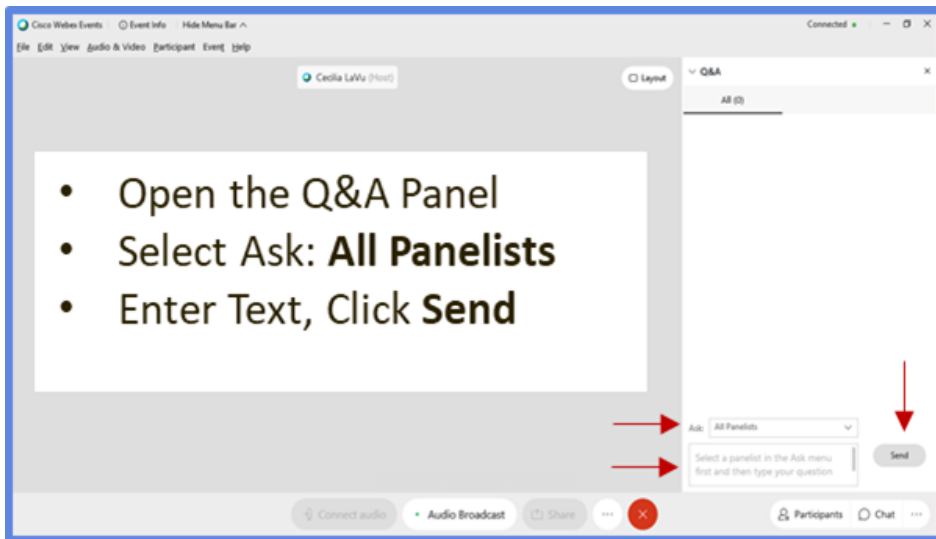
- COVID Vaccination Clinics
 - Where can I get my second dose?
 - Where can I sign up to get my shot?
- Vaccine Order Status
- Enrollment Status
- Technical Issues with CalVax

Q&A

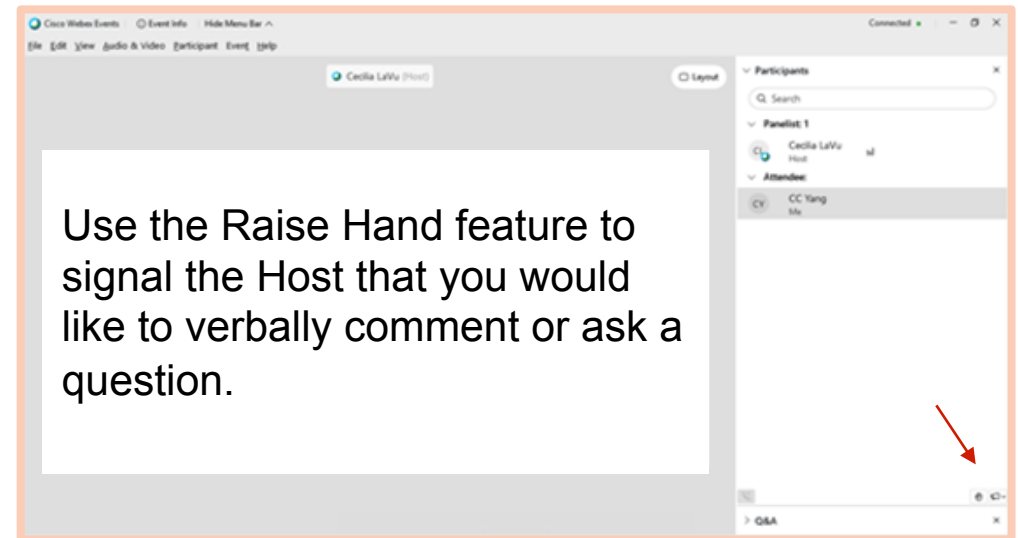
How to Ask a Question

During the webinar, please use one of the following methods to ask a question or make a comment.

Q&A Panel



Raise Hand (must have requested to join audio)



Provider Resources on EZIZ

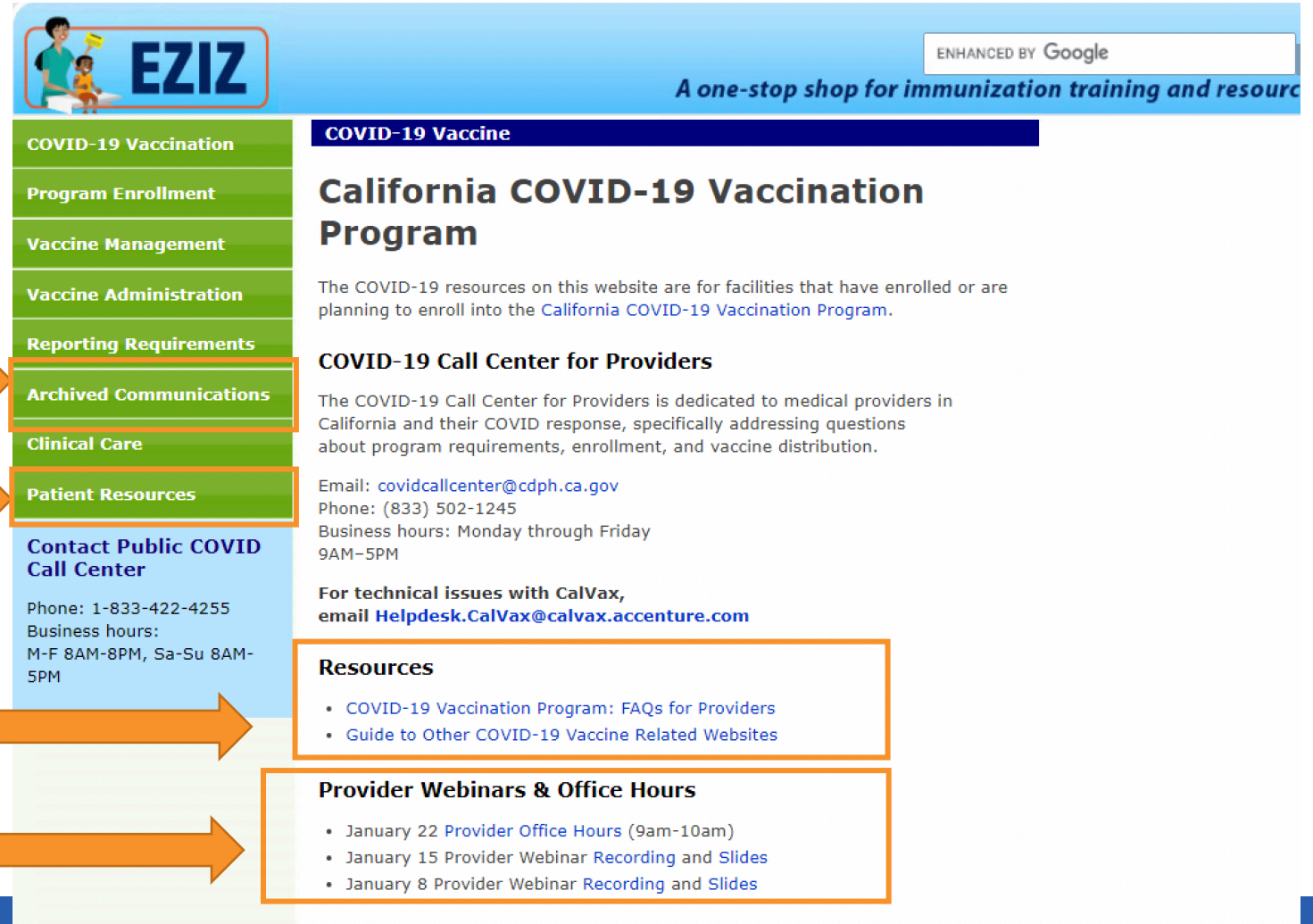
<https://eziz.org/covid/>

View archived communications
from COVID Call Center here

View patient resources on tabs here

View FAQs for Providers here

View recording and slides and find links
to upcoming events here



The screenshot shows the EZIZ website interface. At the top, there's a header with the EZIZ logo and the tagline "A one-stop shop for immunization training and resource". Below the header is a navigation menu with links: COVID-19 Vaccination, Program Enrollment, Vaccine Management, Vaccine Administration, Reporting Requirements, Archived Communications, Clinical Care, and Patient Resources. The "Archived Communications" and "Patient Resources" links are highlighted with orange boxes and arrows pointing to the text on the left. The main content area is titled "COVID-19 Vaccine" and "California COVID-19 Vaccination Program". It includes a description of the resources, contact information for the COVID-19 Call Center for Providers, and a "Resources" section with links to FAQs and other related websites. There is also a "Provider Webinars & Office Hours" section with links to recordings and slides for upcoming events.

COVID-19 Vaccine

California COVID-19 Vaccination Program

The COVID-19 resources on this website are for facilities that have enrolled or are planning to enroll into the [California COVID-19 Vaccination Program](#).

COVID-19 Call Center for Providers

The COVID-19 Call Center for Providers is dedicated to medical providers in California and their COVID response, specifically addressing questions about program requirements, enrollment, and vaccine distribution.

Email: covidcallcenter@cdph.ca.gov
Phone: (833) 502-1245
Business hours: Monday through Friday 9AM-5PM

For technical issues with CalVax,
email Helpdesk.CalVax@calvax.accenture.com

Resources

- [COVID-19 Vaccination Program: FAQs for Providers](#)
- [Guide to Other COVID-19 Vaccine Related Websites](#)

Provider Webinars & Office Hours

- January 22 [Provider Office Hours](#) (9am-10am)
- January 15 [Provider Webinar Recording and Slides](#)
- January 8 [Provider Webinar Recording and Slides](#)

Next Provider Office Hours:

Friday, January 29, 2021

9:00 – 10:00AM

Next Provider Webinar:

Friday, February 5, 2021

9:00 –10:00AM

Thank You

COVID-19 Call Center for Providers

Email: covidcallcenter@cdph.ca.gov

CalVax technical Help Desk: HelpDesk.CalVax@calvax.accenture.com

Phone: (833) 502-1245

Monday through Friday from 9 AM–5 PM