

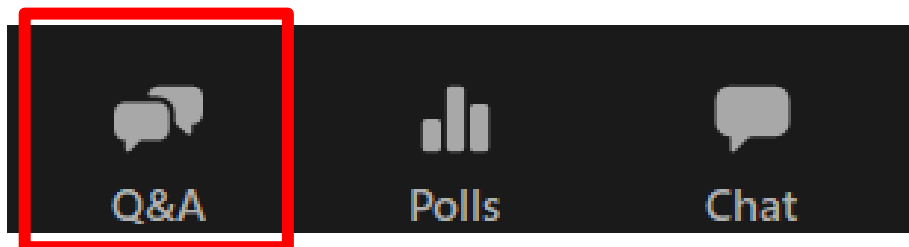
Welcome to the California COVID-19 Vaccination Program Multi-County Entities Updates

Wednesday, June 22, 2022



MCEs Updates and Discussion Q&A

During today's session, please use the Q&A panel to ask your questions or raise your hand so our CDPH subject matter experts can respond directly.



Housekeeping

Reminder to Panelists:



Please mute yourself when not speaking.

Please monitor the Q&A panel for questions you may be able to answer.

Reminder to Attendees:



Today's session is being recorded. Access today's slides and archived presentations at:
<https://eziz.org/covid/education/>



If you have post-webinar questions, please email leslie.amani@cdph.ca.gov

Agenda: Wednesday, June 22, 2022

No.	Item	Speaker	Time (AM)
1	Welcome & Announcements	Leslie Amani (Moderator)	9:00 – 9:05
2	COVID-19 Vaccine Clinical Update	Louise McNitt, MD (CDPH)	9:05 – 9:25
3	COVID-19 Vaccine Storage & Handling Update	Kate McHugh (CDPH)	9:25 – 9:30
4	COVID-19 Vaccine Management	Daniel Conway (CDPH)	9:30 – 9:40
Q&A and Discussion			9:40 – 9:55
5	Wrap-up & Resources	Leslie Amani (Moderator)	9:55 – 10:00

Announcements

Leslie Amani, CDPH

COVID-19 Vaccine Product Guide

COVID-19 Vaccine Product Guide



Check vaccine labels before use to avoid mix-ups. Products may look similar.

Refer to [CDC Product Guide](#) for more information. Details may differ from packaging; [EUA fact sheets](#) supersede info on vials and carton. Note: Pfizer 12+ (purple cap) no longer distributed.

	Pfizer			Moderna			Janssen (J&J)
	Infant/Toddler 6 months–4 years	Pediatric 5–11 years	Adol/Adult 12+ years	Infant/Toddler 6 months–5 years	6–11 years: primary 12+ years: booster	Adol/Adult 18+ years	Adult 18+ years
				 Magenta Border	 Purple Border	 Light Blue Border	
Packaging	Maroon Cap	Orange Cap	Gray Cap	Dark Blue Cap	Blue Cap	Red Cap	Blue Cap
Doses Per Vial	10 doses	10 doses	6 doses	10 doses	10 doses	10–11 doses	5 doses
Carton Size	100 doses	100 doses	60 doses	100 doses	100 doses	100 doses	50 doses
Min. Standard Order	100 doses	100 doses	300 doses	100 doses	100 doses	100 doses	100 doses
Carton NDC #	59267-0078-4	59267-1055-4	59267-1025-4	80777-279-99	80777-275-99	80777-273-99	59676-580-15
CVX	219	218	217	228	221	207	212
Storage Limits Before Puncture: Label vaccine with expiration and use-by dates. Strictly comply with manufacturer guidance.							
ULT (-90°C to -60°C)	Until expiration	Until expiration	Until expiration				
Thermal Shipper							
Freezer				Until expiration (-50°C to -15°C)	Until expiration (-50°C to -15°C)	Until expiration (-50°C to -15°C)	
Refrigerator (2–8°C)	Up to 10 weeks	Up to 10 weeks	Up to 10 weeks	Up to 30 days	Up to 30 days	Up to 30 days	Until expiration
Checking Expiration Dates†	12 months from manufacture date. Check FDA fact sheet.	12 months from manufacture date. Check FDA fact sheet.	12 months from manufacture date. Check FDA fact sheet.	Check product website or QR code	Check product website or QR code	Check product website or QR code	Check product website, QR code, or call 800-565-4008

* When extracting Moderna booster doses, the maximum number of doses from either vial presentation should not exceed 20 doses.

† Do not dispose of expired vaccine until checking with manufacturers for extended expiration dates.

California COVID-19 Vaccination Program

IMM-1399 (6/21/22)



	Janssen (J&J)
Infant/Adult 18+ years	Adult 18+ years
Do not dilute	Do not dilute
0.5 mL	0.5 mL
0.5 mL	0.5 mL
If needed immediately, stand at room temperature for 15 minutes before administering.	If needed immediately, thaw at room temperature
Carton: up to 4 hrs at 25°C (77°F)	Carton: up to 4 hrs at 25°C (77°F) max
Vial: about 1 hour at 25°C (77°F)	Vial: about 1 hour at 25°C (77°F) max
Store up to 12 hours at 9°C to 25°C (47°F to 77°F)	Store up to 12 hours at 9°C to 25°C (47°F to 77°F)
6 hours at 2°C to 8°C (36°F to 46°F) or 2 hours at 25°C (77°F) max	6 hours at 2°C to 8°C (36°F to 46°F) or 2 hours at 25°C (77°F) max

IMM-1399 (6/21/22)



Job Aid: Vaccine Administration Checklist

Vaccine Administration Checklist

California COVID-19 Vaccination Program




Use this guidance to help ensure your patients receive sufficient protection after vaccination and to minimize revaccination efforts due to administration errors. Refer to CDC's [Interim Clinical Considerations](#) for additional clinical guidance and exceptional circumstances. Ensure check-in staff and vaccinators are properly trained on [COVID-19 vaccine timing by age](#); ensure vaccinators are properly [trained to prepare vaccine products](#) your site will administer—paying extra attention to dilution of Pfizer COVID-19 vaccine products.

0	Screen recipients carefully and schedule appointments based on eligibility and age at date of vaccination.	Check-in Staff
	<ul style="list-style-type: none">COVID-19 vaccine dosages are based on age—not size or weight.Vaccine products may have 2-dose or 3-dose primary series. Refer to COVID-19 Vaccine Timing by Age for age indicators, number/timing of primary and booster doses, recommendations for immunocompromised.For subsequent doses in primary series: Check My Turn, CAIR, or your EHR to confirm the vaccine product your patient previously received AND timing of the next dose; administration at an incorrect interval may require revaccination. Determine if extended dosing interval for Pfizer/Moderna 2nd dose is appropriate.4-Day grace period: Primary series and booster doses administered up to 4 days before the minimum interval, known as the 4-day grace period, are considered valid.Interchangeability of COVID-19 vaccine products: In general, the same mRNA vaccine product should be used for all doses in the primary series. See Interim Clinical Considerations for exceptions.Transitioning from a younger to older age group: People should receive the recommended age-appropriate vaccine dosage based on their age on the day of vaccination.	
1	Carefully check the vaccine vial label against the prescribed vaccine in My Turn or your EHR.	Vaccinators
	Administering the wrong formulation may result in a lower-than-authorized dosage and insufficient protection. <ul style="list-style-type: none">For COVID-19 vaccines, use vial cap color to help distinguish products. Refer to COVID-19 Vaccine Product Guide for cap colors and age indicators by product. (Early shipments of Pfizer 6M-4Y do not correctly state the age indicators. Please refer to the Pfizer Provider Letter.)	
2	Always check expiration date before preparation and administration.	Vaccinators
	Administration of expired vaccine may require revaccination (see CDC revaccination guidance). <ul style="list-style-type: none">See COVID-19 Vaccine Product Guide or EUA Fact Sheets to determine expiration date by vaccine.Your vaccine coordinator may have written updated expiration dates on product or outer cartons.	
3	Always check beyond-use limits before preparation and administration.	Vaccinators
	Administration of vaccine past beyond-use limits may require revaccination. See COVID-19 Vaccine Product Guide or EUA Fact Sheets for limits by product.	

California COVID-19 Vaccination Program

IMM-1411 (6/21/22)

	<ul style="list-style-type: none">For unpunctured vials: Don't prepare or administer vaccine past the limits on the beyond-use tracking label your vaccine coordinator may have applied to the carton.For punctured vials: Double check the first-puncture date/time vaccinators have written on the label; use by the limit printed on the vial label then discard. <p>Pfizer Details:</p> <ul style="list-style-type: none">5-11Y (orange cap) and 6M-4Y (maroon cap): 12-hour limit in EUA Fact Sheet supersedes 6 hours printed on labels and cartons.	
4	Prepare vaccine according to the manufacturer fact sheet.	Vaccinators
	<p>Prepare vaccines just before administration and in a designated area to avoid contamination.</p> <ul style="list-style-type: none">Thaw vials for the day based on number of scheduled appointments and doses/vial. Do not refreeze vaccine.Don't pool vaccine from multiple vials to obtain one dose.Return vaccine product to storage before administration to minimize time exposed to ambient temperatures.COVID-19 vaccines may be administered without regard to timing of other vaccines. If coadministering with routine vaccines, prepare one vaccine at a time then label and organize to prevent mix ups.If vaccinating family members, prepare vaccines for one member at a time to prevent mix ups.	<p>Resources:</p> <ul style="list-style-type: none">Pfizer 12Y+ (gray cap) Fact SheetPfizer 12Y+ (purple cap) Fact SheetPfizer 5-11Y (orange cap) Fact SheetPfizer 6M-4Y (maroon cap) Fact SheetModerna 12Y+ (red cap) Fact SheetModerna 6M-5Y (dark blue cap) Fact SheetJanssen (J&J) Fact Sheet <p>For a chart of thaw times, dosing volume, expiration dates & use-by limits by product:</p> <ul style="list-style-type: none">COVID-19 Vaccine Product Guide
5	Carefully reconstitute Pfizer COVID-19 vaccine products following manufacturer fact sheets.	Vaccinators
	<p>If too much diluent is added, doses may be insufficient. Make sure diluent is used to prevent higher-than-authorized doses.</p> <ul style="list-style-type: none">Do not dilute Pfizer 12Y+ (gray cap) formulation.Double check vaccine and diluent labels.ONLY use sterile 0.9% Sodium Chloride Injection, USP.Use one diluent vial to dilute one vaccine vial then discard remaining diluent.Record dilution date/time on vaccine vial label. <p>From Pfizer:</p> <p>Use syringes with appropriate graduations to dilute with the directed 1.3 mL of saline, or estimate volume.</p>	<p>Tip: To avoid dilution errors, CDC doesn't recommend administering purple and gray cap products in a single clinic.</p> 
6	Select the correct needle for vaccine administration.	Vaccinators
	<p>Use clinical judgment to adjust length for weight and gender.</p> <ul style="list-style-type: none">Use the same needle to withdraw and administer vaccine.Use low dead-volume syringes/needles to maximize Pfizer and Moderna volume.Due to risk of contamination, DO NOT leave a needle inserted into a vial stopper for multiple uses, reuse syringes or needles, or use vial adaptors or spikes to extract doses.	

California COVID-19 Vaccination Program

IMM-1411 (6/21/22)

7	Withdraw the correct vaccine volume.	Vaccinators
	Double check volume for product & dose. Once a vial is punctured, label vial with puncture date/time. <ul style="list-style-type: none">Pfizer 5 Years of Age and Older: See Vaccine Dosage Chart for manufacturer guidance by dose.Moderna 12Y+ (red cap): When using syringes that have tick marks at 0.2-ml intervals, use best judgment to draw up half-way between 0.24 mL and 0.26 mL, or use private stock with appropriate markings.	
8	Don't exceed the number of doses in the fact sheet.	Vaccinators
	Resulting volume may not provide sufficient protection. Fact sheets supersede label, carton and package insert. <ul style="list-style-type: none">Tally doses used on the vial label to ensure you don't administer more than the recommended doses.Moderna 12Y+ (red cap): When extracting only booster doses, or a combination of primary series and booster doses, do not puncture vial stopper more than 20 times to prevent contamination.	
9	Follow consistent protocols if prefilling syringes for pharmacies or vaccination clinics.	Vaccinators
	Consider dedicating a team to dispense prefilled, labeled syringes for daily vaccination clinics, and implementing an independent double check of the dilution process. Carefully follow manufacturer guidance. <ul style="list-style-type: none">Remove one syringe at a time from wrapper, prefill syringe, and label before proceeding to the next.Each person administering vaccines should draw up no more than one MDV (or 10 doses) at one time.Predraw reconstituted vaccine into a syringe only when you are ready to administer it.If predrawn vaccine is not used within 30 min of being reconstituted, follow use-by limits & discard.	
10	Administer vaccines in the correct site and route.	Vaccinators
	<ul style="list-style-type: none">For 6 months through 2 years: The injection site is the vastus lateralis in the anterolateral thigh.For 3 years and older: The injection site is the deltoid muscle. <p>For coadministration, see illustrated guidance.</p>	
11	Administer vaccine according to the manufacturer fact sheet.	Vaccinators
	Confirm with recipient (or parent/guardian) which vaccine product and dose you are administering; double check their COVID-19 Vaccination Record Card if previously vaccinated. <ul style="list-style-type: none">Distribute Fact Sheet for Recipients BEFORE administration.After administration, observe for 15 min (30 min if has history of allergic reactions or contraindications).Document administration data in My Turn or EHR connected to your local CAIR registry (CAIR2/RIDE).Give recipient Vaccination Record Card for primary series and update it for additional and booster doses.Schedule next appointment for primary series or additional/booster doses before they leave.Recommend y-safe (for wellness check-in and 2nd-dose reminder) and Digital COVID-19 Vaccination Record (for mobile proof of vaccination).	

In the Event of Administration Errors

Refer to CDC's [COVID-19 Administration Errors Revaccination Guidance](#) to determine whether revaccination may be recommended and follow CDC's instructions for [responding to administration errors](#).

California COVID-19 Vaccination Program

IMM-1411 (6/21/22)



Job Aid: Preventing Administration Errors

Preventing Administration Errors

California COVID-19 Vaccination Program



Once an error or deviation has occurred, use this guidance to prevent the administration error from occurring again. Refer to CDC's [Interim Clinical Considerations](#) or [Revaccination Guidance](#) for next steps.

An administration error is any preventable event that may cause or lead to improper use of vaccine or patient harm. To reduce errors, complete [COVID-19 vaccine product training](#) and demonstrate competency for products your site will administer. Report errors to [VAERS](#) and [ISMP](#) to help prevent future errors.

Error Type	Guidance to Prevent Administration Errors
Wrong Site or Route	Administer COVID-19 vaccines in deltoid muscle (or anterolateral thigh) using IM injection. <ul style="list-style-type: none">If multiple vaccines are administered at a single visit, administer each injection in a different injection site. Post this anatomical illustration to help identify recommended injection sites.For people ≥11 years, the deltoid muscle can be used for more than one intramuscular injection administered at different sites in the muscle.For children (5–10 years), if more than two vaccines are injected in a single limb, the vastus lateralis muscle of the anterolateral thigh is the preferred site because of greater muscle mass.For 6 months through 2 years: The injection site is the vastus lateralis in the anterolateral thigh.For 3 years and older: The injection site is the deltoid muscle.An IM injection given with too short a needle is functionally a subcutaneous injection; post this reference guide and use clinical judgment to adjust needle length for patient weight and gender.COVID-19 vaccines may be administered without regard to timing of other vaccines. If coadministering COVID-19 vaccine with routine vaccines, prepare and organize syringes to ensure products are administered in correct site and route.Ask patient to completely expose their shoulder when administering in the deltoid muscle. Ensure vaccinators can locate upper/lower borders of a safe IM injection zone. Incorrect administration into shoulder joint instead of deltoid muscle can trigger inflammation and injury.*
Wrong Age	Do not administer vaccine to an unauthorized age group. <ul style="list-style-type: none">Select the correct vaccine product based on patient eligibility and age at date of vaccination.
Wrong Formulation	Select correct vaccine formulation based on patient age at date of vaccination. <ul style="list-style-type: none">COVID-19 vaccine dosages are based on patient age—not size or weight; administering the wrong formulation may result in a lower-than-authorized dosage and insufficient protection.Double check vial label; always verify patient birthdate. (Early shipments of Pfizer 6M-4Y do not correctly state the age indicators. Please refer to the Pfizer Provider Letter.)Refer to COVID-19 Vaccine Product Guide for cap colors and age indicators by product.
Overdosage	Do not administer a higher-than-authorized vaccine injection volume for primary series and additional or booster doses. <ul style="list-style-type: none">If too much vaccine is administered, dose may invoke stronger adverse effects; double check injection volume for product & dose before administration. (Report adverse events to VAERS.)

California COVID-19 Vaccination Program

IMM-1410 (6/21/22)

Error Type	Guidance to Prevent Administration Errors
	<ul style="list-style-type: none">Common errors may include overdosing with 0.50 mL instead of 0.25 mL for a Moderna booster.Moderna 12Y+ (red cap): Syringes in ancillary kits may require estimating between lines; private stock with appropriate markings may be used instead.
Underdosage	Do not administer a lower-than-authorized vaccine injection volume for primary series and additional or booster doses. <ul style="list-style-type: none">If too little vaccine is administered, dose may not provide sufficient protection; double check injection volume for product & dose before administration.Common errors may include underdosing 0.25 mL instead of 0.50 mL for Moderna primary series, leftover vaccine in syringe, vaccine leakage (check for tight fit between needle and syringe), equipment failure (do not use bent or damaged needles) and recipient pulled away (prepare patient in advance).Do not exceed number of doses on vial label; resulting volume may not provide sufficient protection.Moderna 12Y+ (red cap): When using syringes that have tick marks at 0.2-mL intervals, use best judgment to draw up half-way between 0.24mL and 0.26mL, or use private stock with appropriate markings.
Storage at Improper Temperatures	Do not administer vaccine that has been exposed to improper temperatures (i.e., temperature excursion). <ul style="list-style-type: none">Administration of vaccine after a temperature excursion may require revaccination.Monitor and record storage unit temperatures twice daily. (See sample COVID-19 log.)Label affected vaccines DO NOT USE to prevent administration and contact manufacturer to determine if vaccines may be used.Report temperature excursions in myCAvax daily and include excursion resolution.If manufacturer determines vaccines may not be used, report doses as spoiled in myCAvax and discard using guidance in linked document.
Storage Beyond Expiration Date	Do not administer expired vaccine. <ul style="list-style-type: none">Administration of expired vaccine may require revaccination.Double check expiration dates before preparation and administration. (See COVID-19 Vaccine Product Guide for expiration dates & their location by product.)Rotate stock weekly to ensure vaccines soon to expire are used first; remove expired vaccine from storage units to prevent administration.Report expired doses as "expired" in myCAvax; discard following linked guidance.
Storage Beyond "Use By" Date and Time	Do not administer vaccine past recommended beyond-use (i.e., use-by) date/time. <ul style="list-style-type: none">Administration of vaccine past beyond-use limits may require revaccination.Double check beyond-use date/time before preparation and administration.Storage limits before puncture vary by temperature range; apply beyond-use tracking labels to cartons when vaccine shipments are stored to ensure beyond-use limits are followed.Once vial is punctured, label vial with puncture date/time (dilution date/time for Pfizer products); use by time limit printed on vial label.Routinely remove vaccine beyond use-by date/time from storage units to prevent administration.Report doses beyond use-by limits as "expired" in myCAvax; discard following linked guidance.

California COVID-19 Vaccination Program

IMM-1410 (6/21/22)

Error Type	Guidance to Prevent Administration Errors
Given Sooner than Minimum Interval	Confirm the correct interval between doses for primary series and additional/booster doses. <ul style="list-style-type: none">Administration at an incorrect interval may require revaccination.Don't administer 2nd dose before its recommended interval. (A 4-day grace period prior to the recommended date is permitted.)Refer to COVID-19 Vaccine Timing by Age for age indicators, timing of primary/booster doses, and recommendations for the immunocompromised.Check My Turn, CAIR or your EHR to confirm timing of the patient's next dose.Providers must document administration in My Turn or an EHR connected to CAIR (CAIR2/RIDE) to help reduce these administration errors. Complete the patient's Vaccination Record Card and update the card with additional/booster doses.
Incorrect Formulation (Mixed Series)	Administer the correct mRNA COVID-19 vaccine product the appropriate dose in 2-dose or 3-dose primary series. (See exceptional situations .) <ul style="list-style-type: none">3-dose primary series of Pfizer maroon cap vaccine applies to infants/toddlers 6M-4Y or for immunocompromised. (See Pfizer EUA Fact Sheet.)Check My Turn, CAIR, or your EHR to confirm vaccine product your patient previously received.Check vial label carefully to ensure you're administering the correct product.If an incorrect formulation is administered, please refer to CDC's Vaccine Administration Errors and Deviations guidance.
Incorrect Dilution Product	Reconstitute Pfizer COVID-19 pediatric vaccine products correctly. <ul style="list-style-type: none">Do not dilute Comirnaty (gray cap) formulation.Double check vaccine and diluent labels before reconstituting vaccine.ONLY use sterile 0.9% Sodium Chloride Injection, USP for diluent.Record dilution date/time on vial label.To prevent a higher-than-authorized dose, ensure diluent is used.If feasible based on time frame for vaccine stability at room temperature, dedicate a team to dispense prefilled, labeled syringes of the vaccine for daily vaccination clinics. Consider an independent double check of the dilution process.*
Incorrect Dilution Volume	Reconstitute Pfizer COVID-19 vaccine products with the correct diluent volume. <ul style="list-style-type: none">Double check diluent volume; if too much diluent is added, doses may not provide sufficient protection.Diluent volume for Pfizer 6M-4Y (maroon cap) 2.2 mL/vial; Pfizer 5-11Y (orange cap) 1.3mL/vial; Pfizer 12Y+ (purple cap) 1.8 mL/vial.Pfizer recommends use of syringes with appropriate graduations to dilute with the directed 1.3 mL of saline. Using syringes with 0.2 mL graduations and estimating the volume will not significantly impact intended dose.Use one diluent vial to dilute one vaccine vial; discard the remainder of the diluent in the vial.

* [Top 10 Errors Related to COVID-19 Vaccination](#): published June 28, 2021; accessed online November 9, 2021.

California COVID-19 Vaccination Program

IMM-1410 (6/21/22)

Job Aid: Reporting Inventory to VaccineFinder

Reporting Inventory to Vaccine Finder

Vaccinate ALL 58

Providers must report COVID-19 vaccine inventory to VaccineFinder at least weekly by close of business on Fridays once shipments arrive. Adjust counts for shipments, transfers, or nonviable doses removed from inventory. The Organization Coordinator (completed Section A during enrollment) receives the registration email and may choose to report for all affiliated locations or delegate reporting to Location Coordinators.

This job aid covers onboarding, reporting inventory, and adding new vaccines and NDCs.

Reporting Options

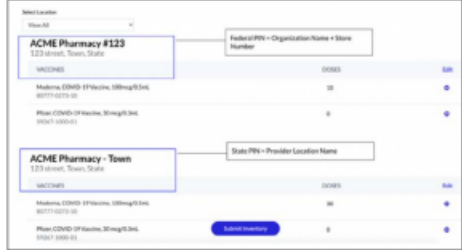
Report through **COVID Locating Health** using either File Upload (with a CSV file) or Log Manually option. Your most recent inventory data is reported to CDC at 5 am EST. Data reported after 5 am is reported the following day.

Reporting for Pharmacies

Report using the PIN (state or federal VTrkS PIN) associated with your vaccine orders. Exceptions:

- Pharmacies with federally and state-allocated doses report under federal PIN only
- Pharmacies reporting centrally report under federal PIN only

Location Name for federal PINs end with a number (see image). Federal PINs start with MH1, CP1, GM1, TP1, MS1, IP1, or GN1 followed by 6 characters. (See **Federal Pharmacy Partner Inventory Reporting**.)



Reporting for Community Health Centers (HRSA)

Report federally allocated inventory to CDC's VTrkS Provider Order Portal (VPOP) using federal VTrkS PINs. Report state-allocated doses to VaccineFinder using state VTrkS PINs.

California COVID-19 Vaccination Program IMM-1319 (6/21/22) Page 1

Moderna 12Y+ (red)	Janssen (blue)
80777-273-99	59676-580-15
10	5

their clinic locations, work, and additional may be updated using

m (CARS)

45, option 2

enter@cdph.ca.gov

1319 (6/21/22) Page 2

COVID Locating Health

complete registration

COVID-19 Vaccination Program, you will need to submit inventory to the CDC daily using the COVID Locating Health Provider Portal will

ed to do:

submit registration in 7 days. This is a requirement after this time.

your data no later than midnight local time.

ate Account

be administering from and click **Add**. Repeat for selections appear under the **X** to remove vaccines.

up

will you be administering?

vaccines you still distribute at

100mcg 0.6mL dose

200mcg 0.6mL dose

300mcg 0.7mL dose

Add

200mcg 0.6mL

1319 (6/21/22) Page 3

ur vaccine inventory?

changed for the 7 vaccination

65865

866

story on behalf of all

we will be responsible for inventory.

1-5-15

Inventory

1319 (6/21/22) Page 4

locations each can be reported by

Quantity
Enter Quantity
Enter Quantity
Enter Quantity
Enter Quantity
Enter Quantity
Enter Quantity

des your column in your file. Store the file on your computer.

1-5-15

Inventory

Step 2

Update the spreadsheet with your current inventory. Save and rename the file to include today's date.

Tips

1319 (6/21/22) Page 5

he corrected file.

Contact Support

ed.]

s, columns in wrong order or positive

at 5 am EST. Files

re_2020-

that

9 (6/21/22) Page 6

Inventory

Step 2

Edit

or nonviable doses

1319 (6/21/22) Page 7

will appear in both Add Vaccines

Add Vaccines

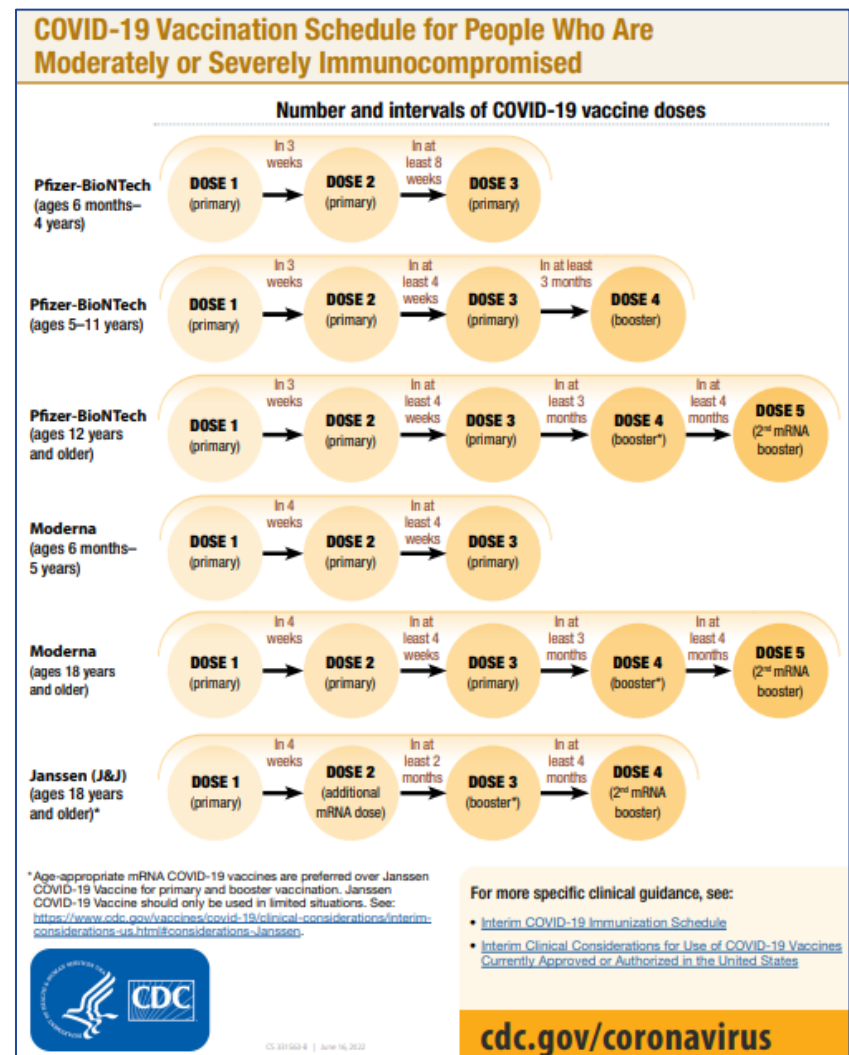
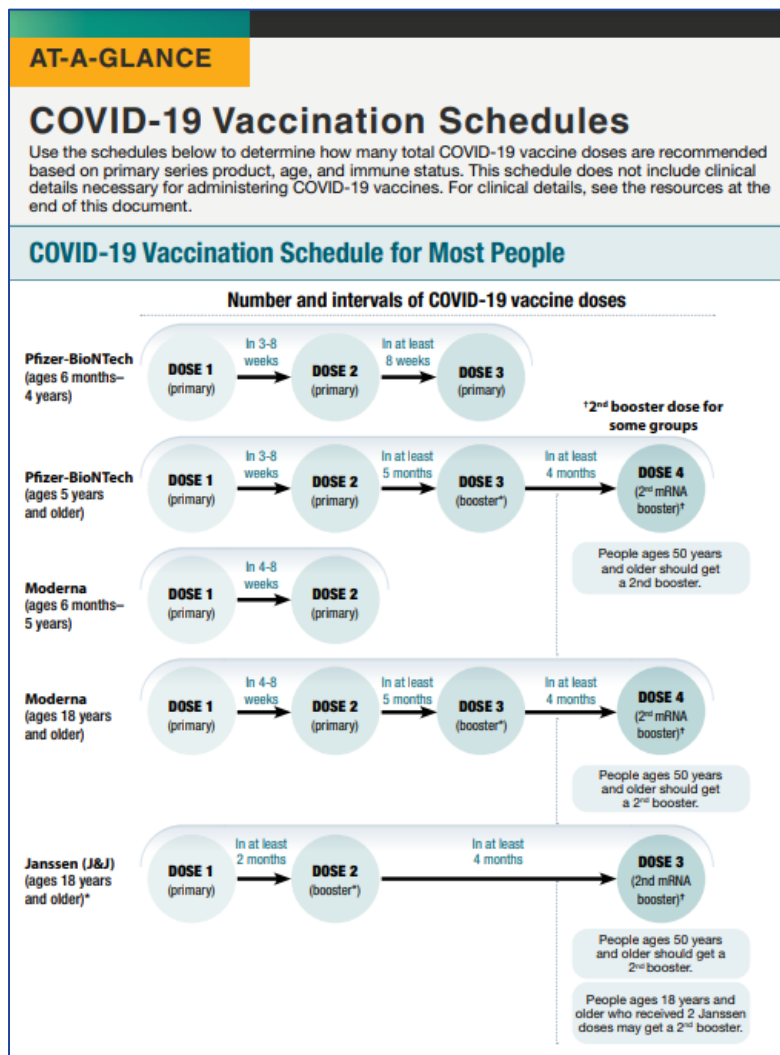
then follow these number on the vial will

1 vaccine selected

2 locations selected

319 (6/21/22) Page 8

COVID-19 Vaccination Schedules



Archived!

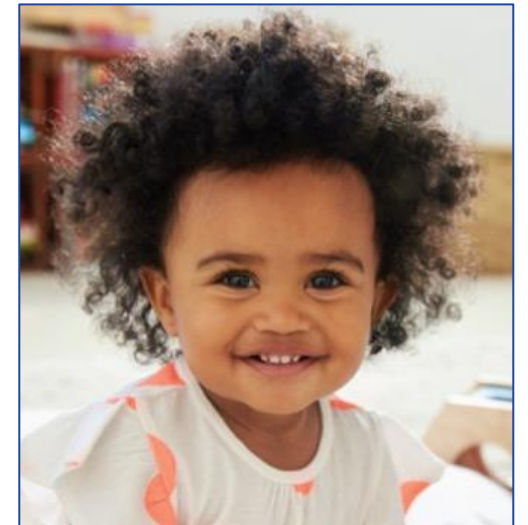
Planning for Infant/Toddler COVID-19 Vaccinations

Dr. Erica Pan, Deputy Director, Center for Infectious Diseases, and CDPH Subject Matter Experts shared information on "Planning for Infant/Toddler COVID-19 Vaccinations".

Topics included clinical, storage and handling, ordering, resources, and more.

[Archived Slides](#)

[Archived Recording](#)



Upcoming CDC COCA Webinar

CDC/Clinician Outreach and Communication Activity (COCA) Webinar

Topic: Recommendations for Pfizer-BioNTech and Moderna COVID-19 Vaccine Primary Series in Children 6 Months through 5 Years Old

When: TODAY

Time: 11:00AM – 12:00PM PDT

To register and send questions in advance use the following:

[COCA Webinar Link](#)

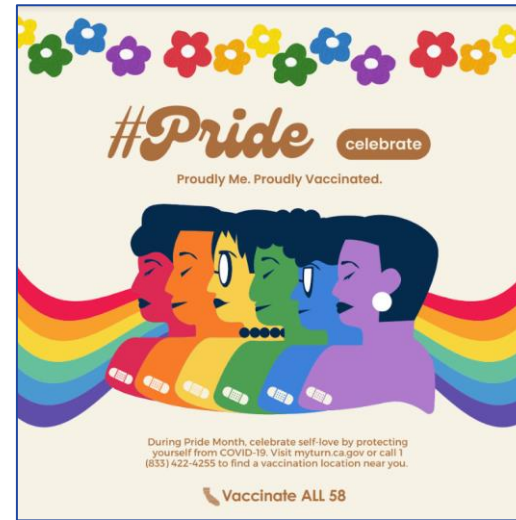


Upcoming COVID-19 Crucial Conversations Webinar

Please join Erin Arendse, Equality CA and Dr. Eric Ball for a webinar on communicating with the LGBTQ+ community about COVID-19 vaccines.

When: TODAY at 12:00-1:00PM

[Register here!](#)



This activity has been planned and implemented in accordance with the accreditation requirements and policies of the Accreditation Council for Continuing Medical Education (ACCME) through the joint providership of the California Medical Association (CMA) and California Department of Public Health. CMA is accredited by ACCME to provide continuing medical education for physicians.

The California Medical Association designates this enduring material for a maximum of 1 *AMA PRA Category 1 Credits™*. Physicians should claim only the credit commensurate with the extent of their participation in the activity.

This activity has not received commercial support.



Upcoming Webinar: CIC COVID Conversations

CDPH invites you to join the California Immunization Coalition (CIC) for an upcoming COVID Conversations #11 featuring Dr. Yvonne A. Maldonado, MD, FAAP, FPIDS, FIDSA, Stanford University School of Medicine and Dr. Robert Schechter, MD, MSC, Chief Immunization Branch, CDPH.

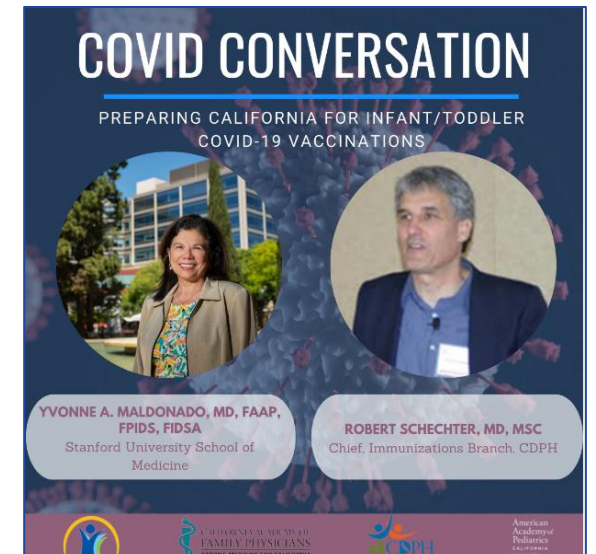
Topic: Preparing California for Infant/Toddler COVID-19 Vaccinations

When: TONIGHT

Time: 6:00PM – 7:00PM PDT

To register and send questions in advance use the

[COVID Conversations Webinar](#)



COVID-19 Vaccine Provider FAQs

- Answers to provider questions
- Updated weekly: last updated 6/16/2022
- Currently in its 76th iteration!



Q: Are COVID-19 vaccine Providers required to provide COVID-19 vaccination to anyone who is eligible, even non-patients?

A: Pharmacies, public health clinics, and community clinics are required to offer COVID-19 vaccination to anyone who is eligible. Private providers are not required to provide vaccination to anyone who is not currently a patient. However, CDC and CDPH strongly encourage providers to make vaccine available to others in their local communities, including patients' family members. For further information, please visit [FAQs for Private & Public Healthcare Providers](#).



Q: When is authorization expected for the Pfizer Infant/Toddler (6 months – 4 years) Pfizer vaccine and the Moderna Infant/Toddler (6 months – 5 years) vaccine?

A: On June 15, 2022, the [FDA's Vaccines and Related Biological Products Advisory Committee \(VRBPAC\)](#) voted to recommend Emergency Use Authorization for the Pfizer Infant/Toddler (6 months – 4 years) vaccine as a three-dose series 3 weeks and 8 weeks apart and the Moderna Infant/toddler (6 months – 4 years) vaccine as a two-dose series 4 weeks apart. CDC's Advisory Committee on Immunization Practices (ACIP) is scheduled to meet on [Friday, June 17 through Saturday, June 18](#), and [Western States Scientific and Safety Review Workgroup \(WSSSRW\)](#) is scheduled to meet on Saturday, June 18. Providers enrolled in the COVID-19 Vaccination Program should be prepared to vaccinate children 6 months-to-5 years old shortly thereafter, pending FDA EUA and ACIP and WSSSRW's recommendations.

California COVID-19 Vaccination Program Provider FAQs

For Prospective, Newly Enrolled, and Current California COVID-19 Vaccine Providers. Providers may also visit [California COVID-19 Vaccination Program](#) for information and updates.

Directions: [Click on a category to be directed to related FAQs.](#)

Contents

New and Updated FAQs.....	2
Pediatric Providers.....	3
Vaccine Program Management.....	5
Provider Enrollment.....	6
Ordering.....	6
Distribution/Redistribution.....	7
Vaccine Administration.....	7
Additional/Booster Doses.....	9
Vaccine Storage & Handling.....	11
Inventory.....	13
Reporting.....	13
Billing & Reimbursement.....	14
Communication Resources.....	16

[Provider FAQs on EZIZ, Updated Weekly](#)



Vaccinate ALL 58

Updated

Pfizer COVID-19 Vaccine Updates & Trainings

Date & Time (linked)	Password
Thursday, June 23 - 9AM	FKqizmRb735
Friday, June 24 - 12PM	XZqMY8qQV37
Monday, June 27 - 12PM	SXpxqFPP265
Tuesday, June 28 - 12PM	vXGkbVDv526
Wednesday, June 29 - 9AM	3JKnTe4GDx5
More sessions listed! NOTE: All times listed here are PDT.	

Audience:

Providers and immunization staff.

Session Topics Include:

- Potential new vaccine presentation (**Maroon Cap**) for individuals 6 months through 4 years of age** (Starting June 7)
- FDA approvals, authorizations - including recent authorizations
- Extended expiry for **Purple**, **Orange**, and **Gray Cap**
- **Gray Cap**, Comirnaty®
- Use of each vaccine presentation, including storage, handling, preparation, and administration

Clinical Update

Louise McNitt, MD, CDPH

Moderna & Pfizer Infant/Toddler COVID-19 Vaccines Authorized Under Emergency Use and Recommended by CDC/ACIP

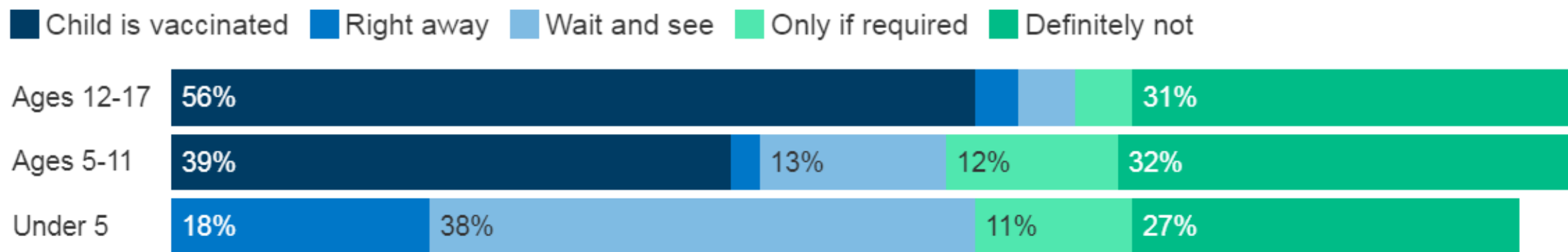
- The Food and Drug Administration's (FDA) Vaccine Related Biologic Products Advisory Committee (VRBPAC) voted to support and the FDA authorized emergency use authorization (EUA) of:
 - Moderna vaccine for 6 through 17 years
 - Moderna vaccine for 6 months through 5 years
 - Pfizer vaccine for 6 months through 4 years
- The CDC's Advisory Committee on Immunization Practices (ACIP) and the Western States Scientific Safety Review Workgroup (WSSSRW) recommend:
 - Moderna vaccine for 6 months through 5 years
 - Pfizer vaccine for 6 months through 4 years
- *ACIP will discuss the Moderna vaccine for 6-to-17 years at their upcoming meeting on June 23, 2022.*



Figure 1

One In Five Parents Of Children Under 5 Want To Vaccinate Their Child For COVID-19 Right Away When Authorized, But Four In Ten Want To Wait And See

Thinking about your child between the ages of...have they received at least one dose of a COVID-19 vaccine, or not? If not, do you think you will get them vaccinated...?

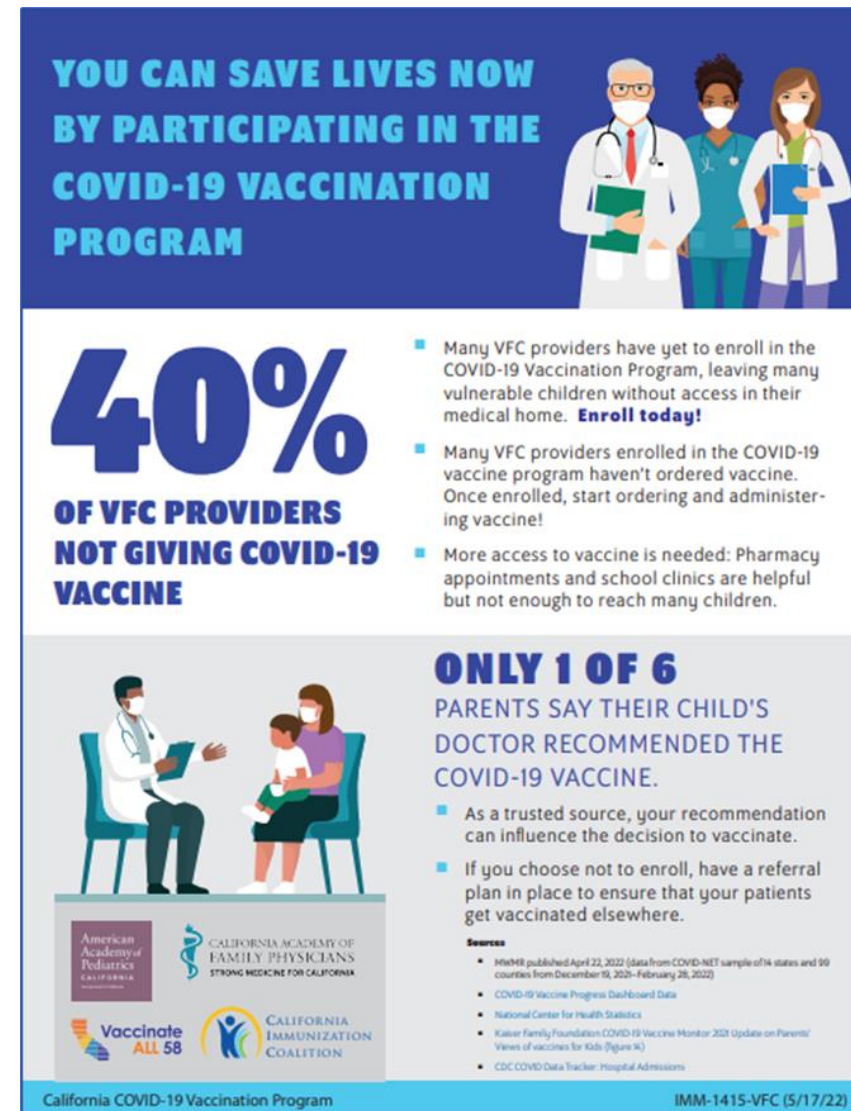
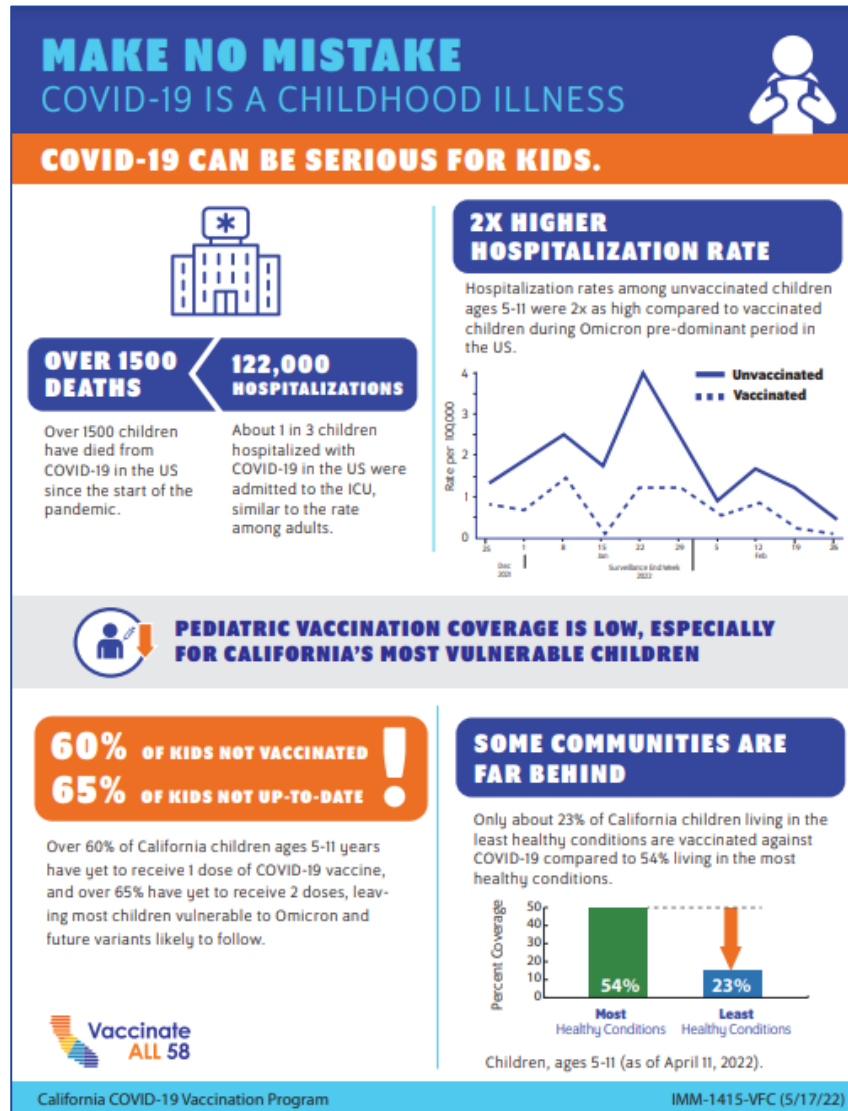


NOTE: Asked of parents or guardians of children under 18. For parents of children under 5, question was worded "Thinking about your child under the age of 5, once there is a COVID-19 vaccine authorized and available for your child's age group, do you think you will...?" See topline for full question wording.

SOURCE: KFF COVID-19 Vaccine Monitor (April 13-26, 2022) • [PNG](#)

[KFF COVID-19
Vaccine Monitor](#)

Job Aid: COVID-19 is a Childhood Illness



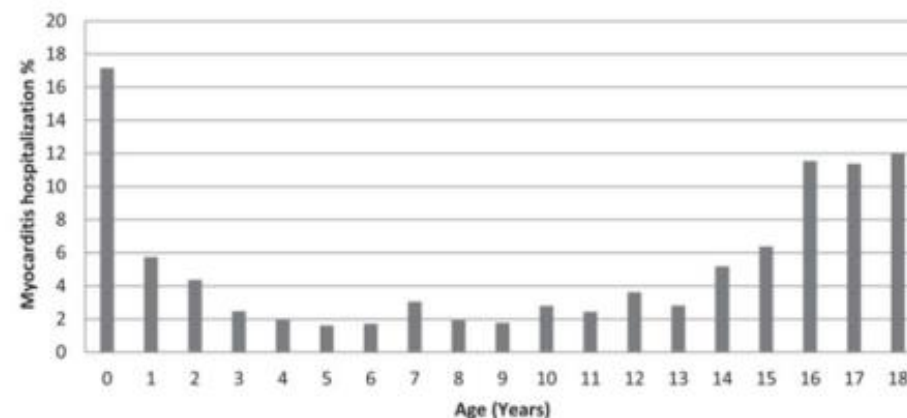
Myocarditis in young children

Background rates

- Before the COVID-19 pandemic, peaks in myocarditis hospitalizations seen in infants and adolescents
 - In adolescents, typically **viral** in etiology
 - In infants, many cases can represent cardiomyopathy with **genetic** component

■ Children

- Annual incidence 0.8 per 100,000
 - In 15-18yo, 1.8 per 100,000 in 2015-2016
- 66% male
- Median LOS 6.1 days



Vasudeva et al. *American J Cardiology*. 2021.

LOS = Length of hospital stay

Vasudeva et al. Am J Cardiology 2021 <https://www.sciencedirect.com/science/article/pii/S0002914921002617>

Previously presented: <https://www.cdc.gov/vaccines/acip/meetings/downloads/slides-2021-06/02-COVID-Oster-508.pdf>

59

Vaccine-associated myocarditis in young children

- Risk of myocarditis after mRNA COVID-19 vaccination, if any, in young children is unknown
 - No cases occurred during clinical trials (n=7,804 with at least 7 days of follow-up)
- Based on the epidemiology of classic myocarditis and safety monitoring in children ages 5-11 years, myocarditis after mRNA COVID-19 vaccination in young children is anticipated to be rare
 - Underlying epidemiology of myocarditis fundamentally **different** in infants
 - Dose used in young children **lower** than dose used in older children

COVID-19 Vaccination: Clinical Talking Points

Recommending COVID-19 Vaccination: Clinical Talking Points for Providers of Pediatric Services



This resource is designed to help you and your staff have effective conversations with families about COVID-19 vaccines, as you are the [most trusted source](#) of medical information for families.

Begin to discuss COVID-19 vaccination now.

The top reason parents cite for not vaccinating their children is the need for more information. For families who may be hesitant about the COVID-19 vaccine, begin the conversation by asking, "How do you feel about your child getting the COVID-19 vaccine?" The goals of these conversations are to have a cordial discussion, answer questions, understand and acknowledge any fears they express, and provide accurate information.



Validate parental concerns and answer questions without judgement.

As their child's provider, your guidance is influential. Hearing your opinion that immunization is safe and effective can be reassuring. When parents express hesitation, ask about and acknowledge their concerns. For example, "If I heard those things, I would be scared, too. Let's talk about your concerns." Let parents know that you share their goal of keeping their children safe.

Give parents accurate information.

Here are common questions and talking points to help parents. Praise parents who ask questions for wanting to know more. Wrap up the conversation by making a recommendation while acknowledging their authority in deciding for their children. For example, "I think getting vaccinated is best for your child. Ultimately, it's your choice. I'm here to guide you and answer your questions."

Why should my child get the COVID-19 vaccine?

- **It's effective.** The vaccine does not protect against all COVID-19 infection, but [multiple studies](#) have shown it is effective in preventing severe illness and hospitalization, including [against the Omicron variant](#).
 - During the Omicron period, unvaccinated children ages 5-11 were [twice as likely](#) to be hospitalized with COVID-19 than vaccinated children.
 - During the Omicron period, [1 in 5 children](#) hospitalized with COVID-19 required ICU-level care. Vaccination [lowered the risk of critical COVID-19 by 79%](#).
 - [Children with pre-existing conditions](#) are at higher risk for severe COVID-19 outcomes. Vaccination is especially recommended to keep children with chronic conditions and disabilities safe and healthy.

Providers of Pediatric Services:

- Begin COVID-19 vaccine conversations now
- Listen
- Validate parental concerns
- Answer questions without judgment
- Supply accurate information

Includes talking points on:

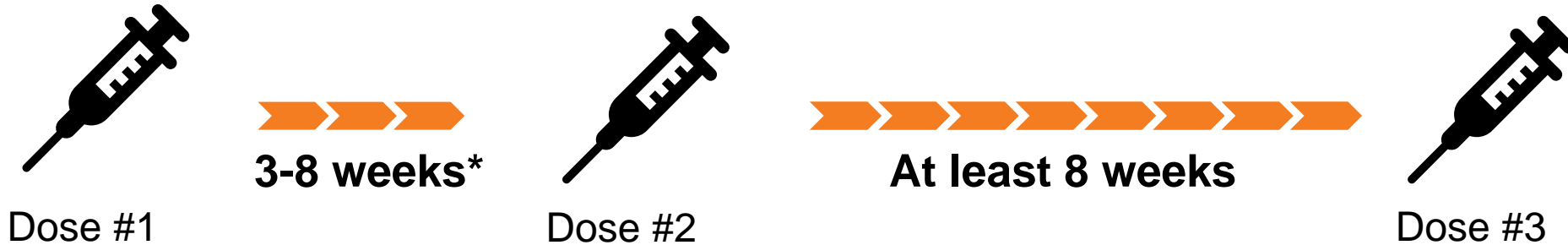
- Myocarditis
- Fertility
- Safety
- And more...

Infant/Toddler COVID-19 Vaccine Products

		Moderna (6M – 5Y)	Pfizer (6M – 4Y)
Dose		25 mcg	3 mcg
Schedule	Dose 1 → 2 Dose 2 → 3	4 weeks (2-dose initial series)	3 weeks 8 weeks
Met primary efficacy outcome: Antibody levels equivalent to levels at older ages associated with protection against severe COVID-19?		Yes	Yes
Preliminary clinical data suggesting at least short-term protection against symptomatic infection?		Yes	Yes (based on few cases)
Effectiveness data yet against severe COVID-19?		No	No
Adverse events		Mostly mild-moderate	Mostly mild-moderate
Any fever v. placebo; <i>fever > 104°F v. placebo</i>		16 v. 7%: 0.2 v. 0%	6 v. 5%: 0.1 v. 0%
Deaths, cases of myocarditis, or new safety concerns identified in trial?		No	No

Primary Series Doses for Infant/Toddler:

- **Pfizer** (3 micrograms): 3 doses for ages 6 months to under 5 years.



- **Moderna** (25 micrograms): 2 doses for ages 6 months to under 6 years.



*Shorter intervals (3 weeks for Pfizer, 4 weeks for Moderna) are recommended for individuals who are moderately or severely immunocompromised

Pediatric Schedule: People Who Are NOT Moderately or Severely Immunocompromised

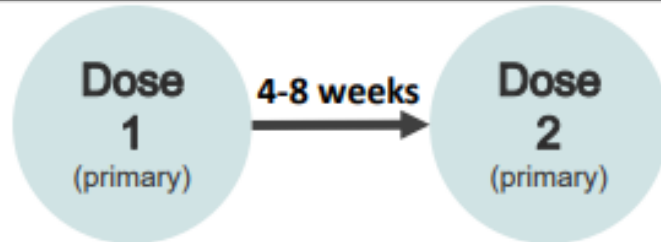
Pfizer-BioNTech
(6 months–
4 years)



Pfizer-BioNTech
(5–17 years)



Moderna
(6 months–
5 years)



AT-A-GLANCE

COVID-19 Vaccination Schedules

Use the schedules below to determine how many total COVID-19 vaccine doses are recommended based on primary series product, age, and immune status. This schedule does not include clinical details necessary for administering COVID-19 vaccines. For clinical details, see the resources at the end of this document.

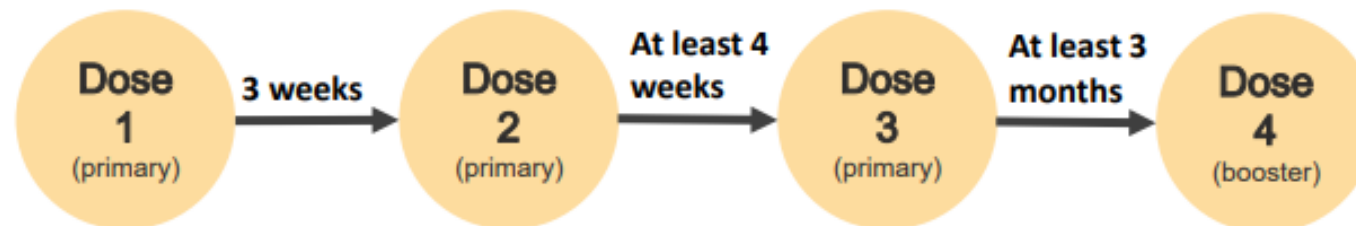
COVID-19 Vaccination Schedule for Most People

Pediatric Schedule: People Who ARE Moderately or Severely Immunocompromised

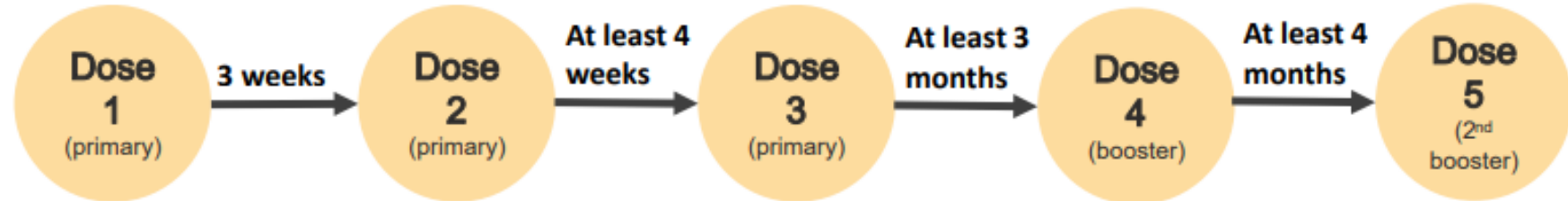
Pfizer-BioNTech
(6 months–
4 years)



Pfizer-BioNTech
(5–11 years)



Pfizer-BioNTech
(12–17 years)



Moderna
(6 months–
5 years)

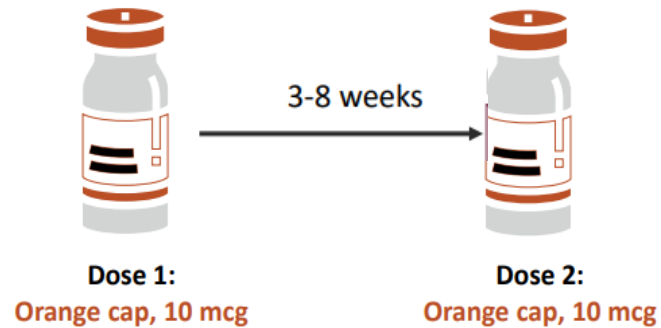


Vaccine Dosage and Interchangeability

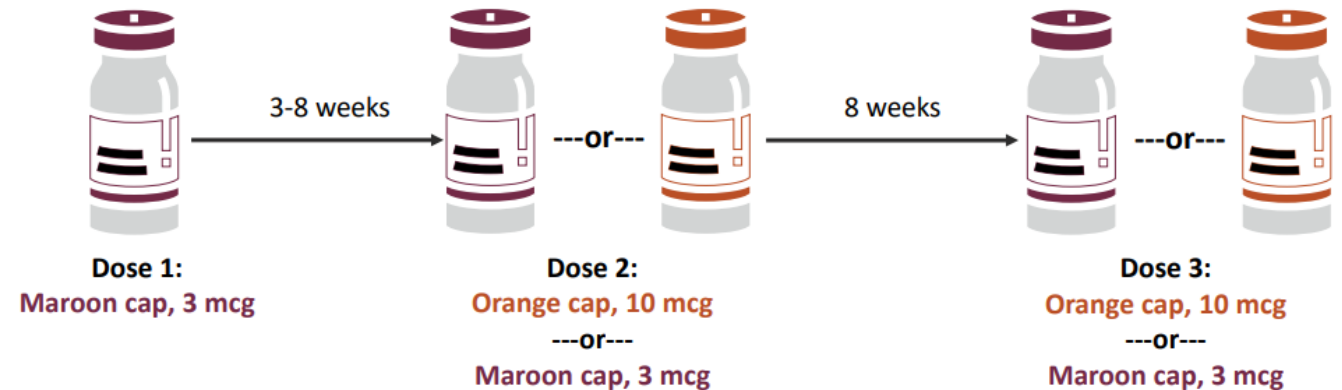
- Vaccine Dosage
 - Children should receive the age-appropriate formulation and follow the schedule based on their age **on the day of vaccination**, regardless of their size or weight.
 - If a person moves from a younger age group to an older age group during the primary series or between the primary series and receipt of the booster dose(s), they should receive the vaccine dosage for the older age group for all subsequent doses.
- Interchangeability
 - COVID-19 vaccines are not interchangeable.
 - The same mRNA vaccine product should be used for all doses of the primary series.
 - In exceptional situations in which the mRNA vaccine product administered for a previous dose(s) of the primary series cannot be determined or is not available, either age-appropriate available mRNA COVID-19 vaccine product may be administered at a minimum interval of 28 days between doses to complete the mRNA COVID-19 primary vaccination series.

Children Who Turn from Age 4 to 5 Years Between Any Dose in the Pfizer Primary Series

- **Scenario 1:** A 2-dose primary series using the formulation for people ages 5–11 years (orange cap)

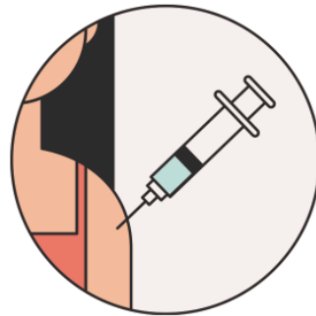
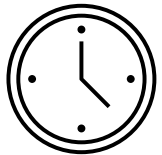


Scenario 2: A 3-dose primary series initiated with the formulation for ages 6 months–4 years. Dose 2 and 3 may be with: the formulation for ages 6 months–4 years or the formulation for ages 6–11 years.

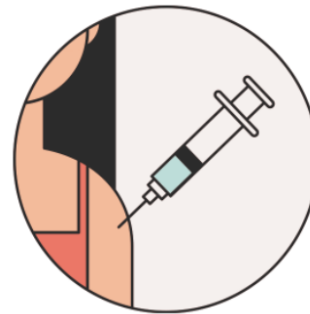
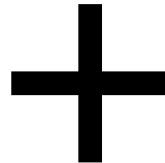


Co-administration

- COVID-19 vaccines may be co-administered with other vaccines on the same day.
- Important to catch-up on routine immunizations. Always check if a patient is up-to-date and, if not, offer catch-up vaccines.
- Integrating COVID-19 vaccination with routine vaccination:
 - Follow best practices to avoid administration errors. See linked resources below.
 - Use the 15-minute observation after COVID-19 vaccination (30 minutes, if at higher risk for anaphylaxis) to encourage families to **participate in V-safe**, and complete health screening questionnaires and counseling.



COVID-19 vaccine



Other vaccines





FDA VRBPAC & ACIP MEETINGS: JUNE 2022

Monday	Tuesday	Wednesday	Thursday	Friday	Saturday
20 Juneteenth Holiday	21	22 ACIP	23 ACIP Moderna EUA for children 6-17 years	24	25
First shipments of vaccine for <5's scheduled to arrive					
27	28 Strain composition of COVID-19 Vaccines	29	30		

CDC Updated Guidelines and Available Resources

Information for jurisdictions, clinicians, vaccine providers, and community partners to plan and implement vaccination for children who are eligible:

- [Interim Clinical Considerations for Use of COVID-19 Vaccines](#) (updated June 19, 2022)
- [Planning COVID-19 Vaccination for Children | CDC](#)
 - [Updated Pediatric COVID-19 Vaccination Operational Planning Guide-Information for Vaccine for Children 6 Months through 4 Years, and Children 6 Months through 5 Years Old \(cdc.gov\)](#)
- [Resources to Promote the COVID-19 Vaccine for Children & Teens | CDC](#)
- [Equity in Childhood COVID-19 Vaccination \(cdc.gov\)](#)
- [CDC COVID Data Tracker](#)
- [Ways Health Departments Can Help Increase COVID-19 Vaccinations | CDC](#)
- [What to Consider When Planning to Operate a COVID-19 Vaccine Clinic](#)
- [How Schools and Early Care and Education \(ECE\) Programs Can Support COVID-19 Vaccination](#)
 - [Hosting Vaccination Clinics: Best Practices for School Districts and Early Care and Education \(ECE\) Programs](#)
 - [Customizable Content for School and Childcare-Located Vaccination Clinics](#)
 - [Considerations for Planning School-Located Vaccination Clinics](#)

Information for parents and caregivers:

- [COVID-19 Vaccines for Children and Teens | CDC](#)
- [Frequently Asked Questions about COVID-19 Vaccination in Children | CDC](#)
- [6 Things to Know about COVID-19 Vaccination for Children | CDC](#)
- [V-safe After Vaccination Health Checker | CDC](#)

Storage and Handling

Kate McHugh, CDPH

Moderna Infant/Toddler Storage & Handling

- Cap color: **Dark blue**
 - Vial label: **Magenta** border
- 10 doses per vial, 100 dose minimum order
- Long term storage
 - -50°C to -15°C until published expiration date ([Moderna Vial Expiration Date Lookup](#))
- Refrigerated storage (2°C to 8°C)
 - 30 days
- Room temperature storage for up to 24 hours total (must be discarded within 12 hours of puncture)
- Does **not** require diluent



Pfizer Infant/Toddler Storage and Handling

- Cap color: **Maroon**
- 10 dose vial, 10 vial carton, 100 dose minimum order
- Long-term storage
 - -90°C to -60°C
 - Until published expiration date (see the EUA)
- Refrigerated storage (2°C to 8°C)
 - 10 weeks
- 12 hours prior to puncture at normal room temperature (8° – 25° C)
- 12 hours after puncture at normal room temperature (8° – 25° C)
- **Requires diluent:** 2.2mL normal saline

What's happening with Moderna 6-to-11?

- It's coming!
 - We don't know when we can order it, likely sometime after the ACIP meeting this week.
- They are repurposing the Moderna "booster-only" vials for this age group because the concentration is the same as a booster dose.
 - This means the vials will initially arrive mislabeled because they were already manufactured!
 - These vials will have a blue cap and purple border.
 - The appropriately labeled vials will have a blue cap and teal border – but we don't know when/if these are coming!
- What about Moderna 12-to-17?
 - Moderna 12-to-17 will use the same adult vials that you have in inventory.

Moderna 6-to-11 Vial Presentation

- **Blue** cap and **purple** border
- Mislabeled – says booster dose only
- 5 doses per vial
- 0.5mL injection volume
- Same storage conditions as the other Moderna products
 - -50C to –15C for long-term storage
 - 2C to 8C for up to 30 days in the fridge
- Letter explaining the mislabeling



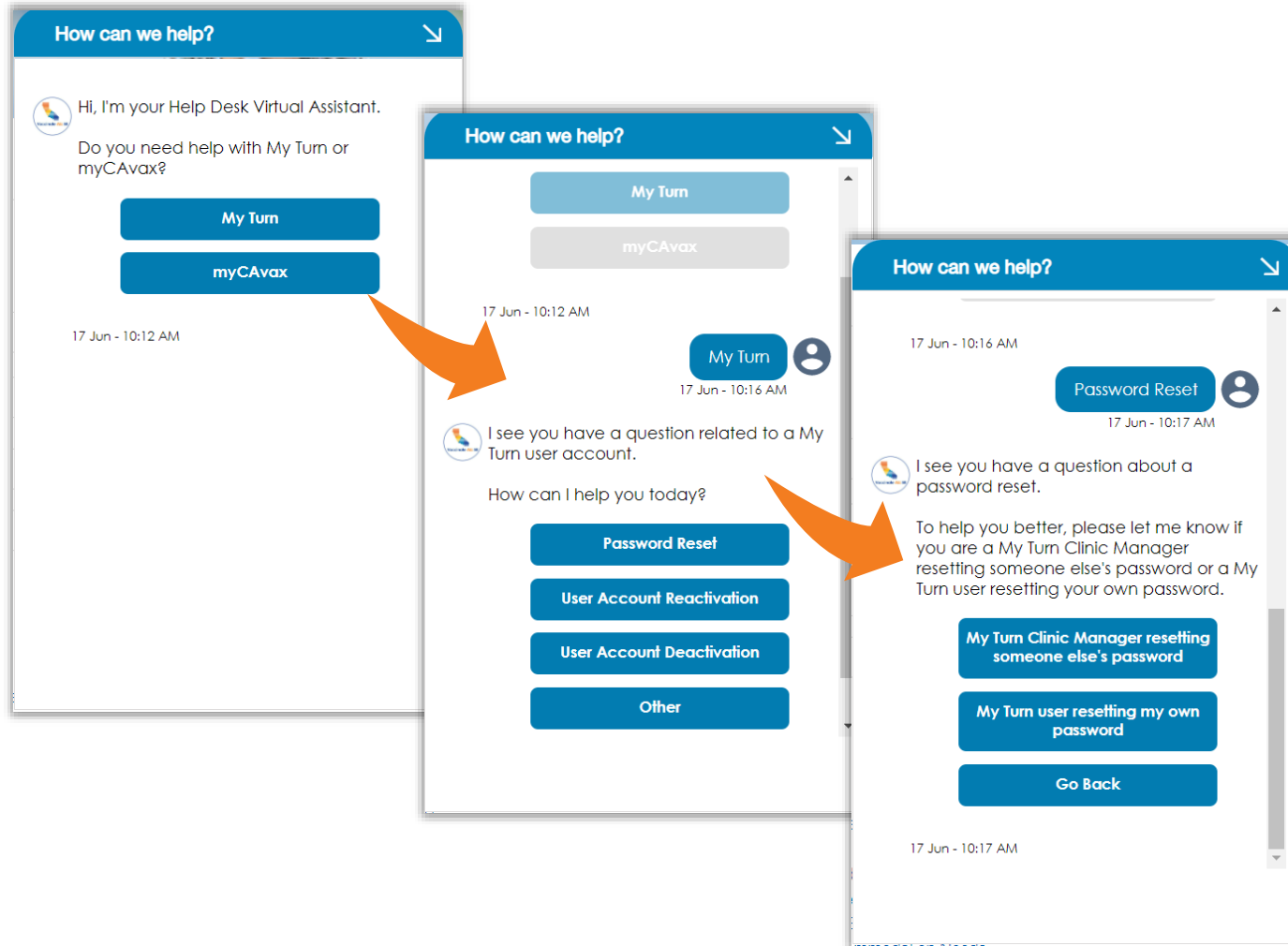
Links to EUA Fact Sheets and Healthcare Provider Letter

- Moderna Infant/Toddler 6 months-5 years
 - [Provider fact sheet](#)
 - [Recipient/caregiver factsheet](#)
- Pfizer Infant/Toddler 6 months-4 years
 - [Provider fact sheet](#)
 - [Recipient/caregiver fact sheet](#)
 - [Letter to explain mislabeling](#)
- Moderna 6 years-11 years
 - [Provider fact sheet](#)
 - [Recipient/caregiver fact sheet](#)
 - [Letter to explain mislabeling](#)

Vaccine Management

Daniel Conway, CDPH

Help Desk Chat Virtual Assistant–Launched June 17th!



The Help Desk Chat launched a Virtual Assistant for My Turn Clinic and Public as well as myCAVax on **June 17th**.

Get help with tasks directly in the chat by clicking on the item.

My Turn Clinic and myCAVax users can use Virtual Assistant for the following:

- Password Reset
- User Account Reactivation
- User Account Deactivation

What's New in My Turn Release 28!



New updates for My Turn Public and Clinic launched 6/20.



My Turn Public

Release Highlights

- ✓ The Pfizer Infant/Toddler 3 dose primary series for children 6 months-4 years old was deployed.
- ✓ The Moderna Infant/Toddler 2 dose primary series for children 6 months-5 years old was deployed.

My Turn Clinic

Release Highlights

- ✓ The Moderna Infant/Toddler 6 months-5-years two dose series was enabled.
- ✓ The Pfizer Infant/ Toddler 6 months-4-years three-dose vaccine series was enabled.
 - ✓ VA Flow Updates & EUA Links
 - ✓ Update to Dose Fields
 - ✓ Add Vaccine Supply & Inventory
 - ✓ Bulk Walk-In Upload
 - ✓ Clinic Creation Setup
 - ✓ Walk-in flow Update
 - ✓ Vaccine Administrator Flow Update
 - ✓ Single/Bulk Update
 - ✓ Appointment/IIS Tab Filter Update

My Turn Clinic Council Reminder



**Attend My Turn Clinic Council this
Thursday from 4-5 PM PT.**

**Email MyTurnInfo@cdph.ca.gov to
request the invitation if you don't have it
already!**

[Use this link to join the meeting!](#)

Release 28 - Infant/Toddler Updates



In Release 28, **Pfizer Infant/Toddler** (3 doses) and **Moderna Infant/Toddler** (2 doses) were deployed through scheduling, walk-ins, and inline and CSV bulk-upload on **My Turn Public and Clinic**.

Clinic Managers and Vaccine Administrators can now create and update appointments for Infants/Toddlers ages 6 months – 5 years and schedule all doses in the series.

Moderna Ages 6-to-17 Ordering and My Turn Update



The FDA amended the Emergency Use Authorization (EUA) to include the Moderna 6-to-11 and 12-to-17 age groups.

ACIP will be meeting soon to discuss recommendations. Once the recommendations are finalized, My Turn Clinic and Public will be updated. myCAvax will also provide additional information about ordering information as we receive it from CDC.

Infant/Toddler Deliveries This Week!



Deliveries for Wave 1 and Wave 2 of the Infant/Toddler Pfizer (6 months-4 years, **Maroon Cap**) and Infant/Toddler Moderna (6 months-5 years, **Blue Cap**) are occurring this week!

Monday	Tuesday	Wednesday	Thursday	Friday
June 20	21	22	23	24
Previously Scheduled Wave 1 Deliveries	Previously Scheduled Wave 2 Deliveries			
27	28	29	30	1



Monday	Tuesday	Wednesday	Thursday	Friday
June 20	21	22	23	24
Expected Wave 1 and 2 Deliveries (Moderna 6/20-6/21; Pfizer 6/20-6/22)			Expected Routine Order Deliveries to Follow Regular Order and Distribution Cadence	
27	28	29	30	1
Expected Routine Order Deliveries to Follow Regular Order and Distribution Cadence				

Small Orders for Infant/Toddler Vaccine



If LHDs would like to begin collecting Small Orders for the new products for distribution once vaccine arrives, they now have the option to configure Small Orders for their jurisdiction.



You can now place Small Orders for the **Infant/Toddler Pfizer** (6 months - 4 years, **Maroon Cap**) through **AmerisourceBergen** (TPR) (Minimum 30 doses, Maximum 90 doses).



Infant/Toddler Ordering Cadence



Routine Ordering: orders submitted and approved after the pre-order waves were **submitted to CDC on Friday, June 17th** and will continue to follow the [Order and Distribution Cadence Calendar](#).



The next allocation refresh for LHDs and MCEs for **Infant/Toddler Pfizer** (6 months-4 years, **Maroon Cap**) and **Moderna** (6 months - 5 years, **Blue Cap**) can be expected during the week of **June 27th**.

APPENDIX

What's New on My Turn: Release 28 (06/20)

My Turn Public

General Enhancements

- ✓ Pfizer Infant/Toddler rollout for 3 dose primary series for children 6 months-4 years old
- ✓ Moderna Infant/Toddler rollout for 2 dose primary series for children 6 months-5 years old
- ✓ [Testing] Update error messaging for better user experience and accessibility

My Turn Clinic

General Enhancements

- ✓ Moderna Infant/Toddler 6 months-5-years two-dose series
- ✓ Pfizer Infant/Toddler 6 months-4-years three-dose vaccine rollout
 - ✓ VA Flow Updates & EUA Links
 - ✓ Update to Dose Fields
 - ✓ Add Vaccine Supply & Inventory
 - ✓ Bulk Walk-In Upload
 - ✓ Clinic Creation Setup
 - ✓ Walk-in flow Update
 - ✓ Vaccine Administrator Flow Update
 - ✓ Single/Bulk Update
 - ✓ Appointment/IIS Tab Filter Update
 - ✓ Dashboard Homepage Update

myCAvax – Known Issues - *Updated 6/20*



Known Issues

Inventory On-Hand Records Not Updating upon Second Save




- ✓ We are currently investigating an issue in which saving orders as 'Draft' through multi-line ordering and then changing the on-hand inventory data, upon order submission, is not saving the changes made to the on-hand inventory data.



Workaround/Next Steps

- ✓ Fix: TBD
- ✓ No Workaround for the Time Being

Slide Icon Key

Icon	Meaning
	This is to label slides that are referencing upcoming or existing functionality and how to use it in the system.
	This is to label slides that include important system reminders.
	This is to label slides that include tips and best practices to improve your system experience.

myCAvax Release Roadmap

RECENTLY DEPLOYED

June 16th (R27.0)

Orders

- ✓ LHDs to Move Small Orders to Standard Orders
- ✓ Order Page Layout Changes
- ✓ New order cancelation 'Status Reason' options
- ✓ Update Audit History for Orders/Transfers
- ✓ Add 'Doses Requested' to Standard Order Screen

Account

- ✓ Storing docusign at the Location Application

Community

- ✓ Add Knowledge Center article to account page
- ✓ Change Flow Title for Multiple Flows

Other

- ✓ Auto-Deactivate Licenses
- ✓ Default tab display on opening of records
- ✓ Remaining email templates to Lightning

IN PROGRESS

July 14th (R28.0)

Orders

- ✓ Order Fulfillment Updates to allow multiple lots and general UI enhancements
- ✓ Allow CDPH and LHD users to update additional details on the Shipment Records such as quantity, product, expiration date, etc.
- ✓ Validate Shipping Hours
- ✓ Set Flags for Temporary Closure on Vaccine Order Review page

Account

- ✓ Temporary Closure for Location Accounts
- ✓ Add VFC Regions to Accounts
- ✓ Add Calibration Expiration date to Storage Unit List

Community

- ✓ Update Thermometer Type options
- ✓ Add Data Logger as Shipment Incident Type

Site Visits

- ✓ Provider Category
- ✓ VFC Assigned Pin

Other

- ✓ Put LHD Dashboard on LHD Homepage

UPCOMING

August 11th (R29.0)

Orders

- ✓ Draft Order Enhancements

Account

- ✓ Provider initiated Disenrollment
- ✓ Disenrollment due to inactivity

Other

- ✓ Start of Contact enhancements to remove duplicate contacts
- ✓ Sharing Rule enhancements for accounts, storage units, etc.

My Turn Public Product Roadmap

RECENTLY DEPLOYED

June 7th (R27)

Release 27

- ✓ Update post appointment communications to check administration date and time
- ✓ [Analysis] Update error messaging for better user experience and accessibility
- ✓ [Continued] Failure Point Notification – setting up monitoring tools throughout My Turn System to flag (potential) issues
- ✓ Continued Analysis – Consider Walk-in and bulk upload appointments for clinic's Public Portal capacity and availability

RECENTLY DEPLOYED

June 20th (R28)

Release 28

- ✓ Pfizer Infant/Toddler rollout for 3 dose primary series for children 6 months-4 years old
- ✓ Moderna Infant/Toddler rollout for 2 dose primary series for children 6 months-5 years old
- ✓ [Testing] Update error messaging for better user experience and accessibility
- ✓ [Continued] Failure Point Notification – setting up monitoring tools throughout My Turn system to flag (potential) issues
- ✓ Continued Analysis – Consider Walk-in and bulk upload appointments for clinic's Public Portal capacity and availability

UPCOMING

July 27th (R29)

Release 29

- ✓ [Testing] Custom flows for vaccine type
- ✓ [Delivery] Update error messaging for better user experience and accessibility
- ✓ [Continued] Failure Point Notification – setting up monitoring tools throughout My Turn system to flag (potential) issues
- ✓ [Testing] Consider Walk-in and bulk upload appointments for clinic's Public Portal capacity and availability
- ✓ Removing flu – zero out flu vaccine supplies to remove nasal spray and flu shot tags

TBD (as approved):

- ✓ 6-to-11 y/o Moderna

My Turn Clinic Product Roadmap

RECENTLY DEPLOYED

June 7th (R27)

Release 27

- ✓ [Clinic Specific Links] Extending Expiration Date
- ✓ [Bulk Walk-In Upload] Add "Other" as an option to the State field
- ✓ [Reports] Create a New report for Appointments that Automatically Change to 'Vaccinated' status
- ✓ Data fix for 5-11 additional doses to booster
- ✓ [IIS - Inline Bulk Upload]-UPDATE: Adding 4hr grace period validations
- ✓ Investigation
 - ✓ Incorrect lot numbers being entered
 - ✓ Turn off SMS Confirmation for In-Home Vaccinations
 - ✓ Add grace period between Bulk Uploads & Contact records before sent to IIS

RECENTLY DEPLOYED

June 20th (R28)

Release 28

- ✓ Moderna Infant/Toddler 6 months-5-years two dose series
- ✓ Pfizer Infant/Toddler 6 months-4-years three-dose vaccine rollout
 - ✓ VA Flow Updates & EUA Links
 - ✓ Update to Dose Fields
 - ✓ Add Vaccine Supply & Inventory
 - ✓ Bulk Walk-In Upload
 - ✓ Clinic Creation Setup
 - ✓ Walk-in flow Update
 - ✓ Vaccine Administrator Flow Update
 - ✓ Single/Bulk Update
 - ✓ Appointment/IIS Tab Filter Update
 - ✓ Dashboard Homepage Update

UPCOMING

July 27th (R29)

Release 29

- ✓ [SMS/Email] Opt-out on the Walk-In flow
- ✓ [Vaccine Inventory] UPDATE: Entering Lot Numbers correctly
- ✓ Removing flu – zero out flu vaccine supplies

TBD (as approved):

- ✓ Moderna 6 year-11-year two dose series
- ✓ Moderna 12 year-17-year two dose series

Wrap-up

Leslie Amani, CDPH

Additional Support

Type of Support

Description

Updated 6.6.22



COVID-19 Provider Call Center

The COVID-19 Call Center for Providers and Local Health Departments is dedicated to medical providers in California and their COVID-19 response, specifically addressing questions about State program requirements, enrollment, and vaccine distribution, including the Vaccine Marketplace.

- Email: covidcallcenter@cdph.ca.gov
- Phone: (833) 502-1245, Monday through Friday from 8AM–6PM



Enrollment Support

For Provider enrollment support, please contact myCAVax Clinic Operations at

- Email: myCAvaxinfo@cdph.ca.gov



myCAVax Help Desk

Dedicated staff provide up-to-date information and technical support on the myCAVax system.

- Email: myCAVax.HD@Accenture.com
- Phone: (833)-502-1245, option 3, Monday through Friday 8AM–6PM

For training opportunities: <https://eziz.org/covid/education/>



My Turn Clinic Help Desk

For **onboarding support** (those in the process of onboarding): myturnonboarding@cdph.ca.gov
For **technical support** with My Turn Clinic for COVID-19 and flu vaccines: MyTurn.Clinic.HD@Accenture.com or (833) 502-1245, option 4: Monday through Friday 8AM–6PM

For job aids, demos, and training opportunities: flu at <https://eziz.org/covid/myturn/flu/> and COVID at <https://eziz.org/covid/myturn/>



Archived Communications

For archived communications from the COVID-19 Provider Call Center about the California COVID-19 Vaccination Program visit

- Website: [EZIZ Archived Communications](#)

Public COVID-19 Call Center

- Phone: (833) 422-4255: M-F 8AM-8PM; S-S 9AM-5PM
- For questions about general COVID questions, including COVID-19 vaccines, scheduling vaccination appointments through My Turn, school-related question, masking, testing, and more.



Thank you for your commitment to protect the health and well-being of all Californians!



Thank you for joining today's webinar!

Next MCEs Updates and Discussion

Wednesday, July 6, 2022