

Welcome to California COVID-19 Vaccination Program Friday Provider Office Hours

Friday, July 29, 2022

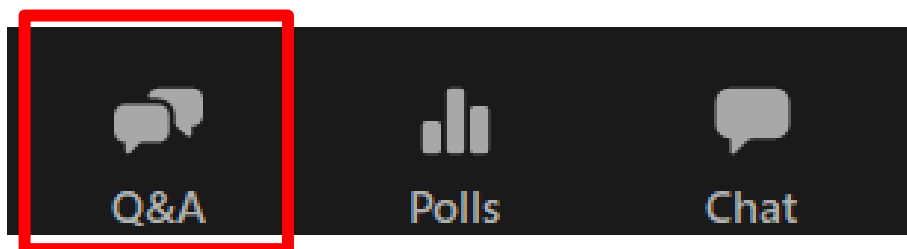


Vaccinate ALL 58

Together we can end the pandemic.

Provider Office Hours Q&A

During today's session, please use the Q&A panel to ask your questions so our subject matter experts can respond directly.



Housekeeping

Reminder to Panelists:



Please mute yourself when not speaking.

Please monitor the Q&A panel for questions you may be able to answer.

Reminder to Attendees:



Today's session is being recorded. Access today's slides and archived presentations at:
<https://eziz.org/covid/education/>



If you have post-webinar questions, please email leslie.amani@cdph.ca.gov

Agenda: Friday, July 29, 2022

No.	Item	Speaker	Time (AM)
1	Welcome & Announcements	Leslie Amani (Moderator)	9:00 – 9:05
2	KidsVaxGrant 2.0	Nisha Gandhi (CDPH)	9:05 – 9:10
3	Vaccine Administration	Elizabeth Reosti (CDPH)	9:10 – 9:15
4	Clinical Update	Floria Chi, M.D. (CDPH)	9:15 – 9:25
5	Storage & Handling	Kate McHugh (CDPH)	9:25 – 9:30
Q&A			9:30 – 9:40
6	Vaccine Management	Eric Norton (My Turn) and Maria Volk (CDPH)	9:40 – 9:50
7	Wrap Up & Resources	Leslie Amani (Moderator)	9:50 – 10:00
Q&A			

Announcements

Leslie Amani, CDPH



CDPH Therapeutics Webinar for Providers

Please join CDPH for a new bi-weekly Provider series: Therapeutics

Attendees will hear CDPH Therapeutics subject matter experts discuss therapeutics equity, education, clinical updates, storage and handling, and other timely and relevant topics related to COVID-19 Treatments.

When: Monday, August 1, 2022

Time: 12PM – 1PM

Zoom registration link: [Therapeutics Webinar for Providers](#)

Archived: CDC COCA Call

Recommendations for the Novavax COVID-19 Vaccine Primary Series in Adults Ages 18 Years and Older

Centers for Disease Control and Prevention
Center for Preparedness and Response



Recommendations for the Novavax COVID-19 Vaccine Primary Series in Adults Ages 18 Years and Older

Clinician Outreach and Communication Activity (COCA) Call
Thursday, July 28, 2022

VA58 Trust & Safety Team Updates

The VA58 Trust & Safety Team reports on trending narratives about COVID-19, delivers biweekly briefings, and develops comprehensive resources to increase awareness around mis-, dis-, and mal-information, as well as the State's capacity to counter it.

BIWEEKLY BRIEFINGS

Biweekly briefings provide partners with the top COVID-19 vaccine mis/dis topics and trends, and invitees receive a copy of the report post-briefing.

To be added to the invite, email
rumors@cdph.ca.gov.

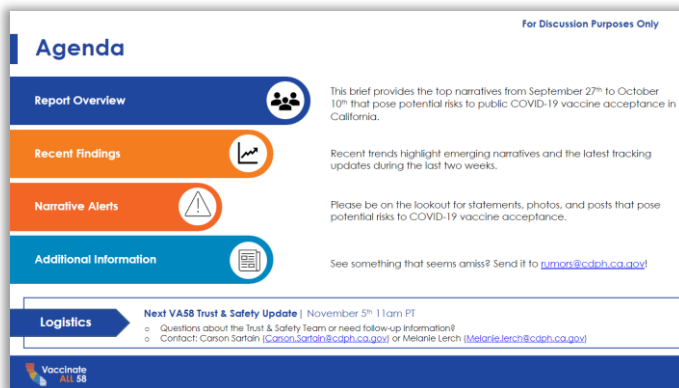
RUMORS INBOX

The Rumors Inbox serves as a tip line for our partners to submit the COVID-19 rumors they're hearing online and within their communities to our team. We incorporate the submissions into our team's reporting.



Report COVID-19 Vaccine Rumors to:

rumors@cdph.ca.gov



RECENT TOPICS & RESOURCES

Mis/Dis/Mal-information: Study shows COVID-19 vaccination causes heavier menstrual bleeding

Trusted Resources: [COVID-19 Vaccines for People Who Would Like to Have a Baby | CDC](#), [COVID-19 vaccines linked to small increase in menstrual cycle length | National Institutes of Health \(NIH\)](#), [COVID-19 Vaccination Considerations for Obstetric–Gynecologic Care | ACOG](#)

Mis/Dis/Mal-information: False claims target Novavax vaccine after it receives EUA.

Trusted Resources: [Coronavirus \(COVID-19\) Update: FDA Authorizes Emergency Use of Novavax COVID-19 Vaccine, Adjuvanted | FDA](#), [U.S. clinical trial results show Novavax vaccine is safe and prevents COVID-19 | National Institutes of Health \(NIH\)](#)

Mis/Dis/Mal-information: Unvaccinated individuals will not suffer from myocarditis or pericarditis after a COVID-19 infection.


Trusted Resources: [Safety of COVID-19 Vaccines | CDC](#), [COVID-19 Vaccine Effectiveness | CDC](#), [Myocarditis and Pericarditis After mRNA COVID-19 Vaccination | CDC](#), [Q&A: COVID-19, Vaccines, and Myocarditis | NIH COVID-19 Research](#)

Stay informed!

Provider Resources on eziz.org/covid

Frequent Content Updates:

- Alerts
- Program Enrollment
- My Turn Onboarding
- Reporting Requirements
- Patient Resources
- Archived Communications
- Education & Support Materials
- More to explore!

**Vaccinate
ALL 58**

California COVID-19 Vaccination Program

ENHANCED BY Google

Program Updates

Program Enrollment

My Turn Onboarding

Vaccine Management

Vaccine Administration

Reporting Requirements

Archived Communications

Patient Resources

Provider Support

COVID Call Center

Email: [Program Info](#)
Phone: (833) 502-1245
Hours: Mon-Fri, 8AM-6PM

Contact us for questions about the program or help with accessing documents.

myCAvax and My Turn


Email:
[myCAvax Technical Support](#)
[MyTurn Onboarding](#),
[MyTurn Technical Support](#)
Phone: (833) 502-1245
Mon-Fri, 7AM-7PM
Sat-Sun, 8AM-1PM


My Turn Clinic Translation Line:
(833) 980-3933
Mon-Fri: 8AM-8PM
Sun-Sat: 8AM-5PM


Vaccines


[Manufacturer Contacts](#)

Updates for Providers

**FAQs**

**Provider Office Hours**

**myCAvax Training**

**Training Calendar**

Alerts:

Infant/Toddler Recommendations and Products

- [Guide of COVID-19 Vaccine Products](#)
- [Summary of Vaccines: Pfizer 6 months-17 years, Pfizer 6 months-4 years, Moderna 6 Months-17 years, and Moderna 6 months-5 years \(CDPH\)](#)

Vaccine Management

- [Receiving and Storing Novavax Vaccine - New](#)
- [Ordering and Distribution Cadenace Calendar - Updated](#)
- [Novavax Vaccine Storage and Handling Resources - New](#)

Vaccine Administration

- [Interim Clinical Considerations for Use of COVID-19 Vaccines \(CDC\)](#)
- [COVID-19 Vaccination Schedule \(Timing Guide\)-Updated for Novavax](#)
Spanish version: [Calendario de la Vacuna COVID-19 \(Guía de Tiempo\)-Updated for Novavax](#)
- [Children who transition from a younger to an older age group: Pfizer-BioNTech | Moderna](#)
- [Novavax Vaccine Administration Resources - New](#)

Planning Resources

- [Preparing for Infant/Toddler Vaccinations Job Aid](#)
- [Planning for Under 5 Vaccinations Webinar Recording and Slides](#)
- [Recommending COVID-19 Vaccination: Clinical Talking Points 6/17/22](#)
- [Requesting COVID-19 Vaccination Staff](#)
- [Expanding Vaccination Capacity](#)

Now Enrolling Providers of Pediatric Services

- [Find Information on How to Enroll](#)
- [Dispelling Provider Myths About Joining the California COVID-19 Vaccination Program](#)
- [Welcome VFC Providers | Flyer | VFC vs. COVID Programs](#)

**Vaccinate
ALL 58**

EZIZ COVID Vaccine Administration Webpage



Novavax COVID-19 Vaccine Information

- [CDC Resources](#)
- [Novavax COVID-19 Overview and Safety](#) (CDC)
- [CDC Recommends Novavax COVID-19 Vaccine for Adults](#)
- [EUA Information](#) (FDA)
- [EUA Fact Sheet for Providers Administering Vaccine](#) (FDA)
- [EUA Fact Sheet for Recipients and Caregivers](#) (FDA)
- [Standing Orders](#) (CDC)
- [Vaccine Preparation & Administration Summary](#) (CDC)
- [Novavax COVID-19 Vaccine website](#)

Ordering & Distribution Cadence Calendar

Ordering & Distribution Cadence Calendar

California COVID-19 Vaccination Program



Ancillary kits for all products will arrive within 24-48 hours of vaccine delivery and **may arrive before vaccines.**

For Providers

Week 1

Monday	Tuesday	Wednesday	Thursday	Friday	Monday	Tuesday	Wednesday	Thursday	Friday
Provider Order (submit by 5pm) 					Pfizer–Standard				
					Moderna/J&J/Novavax–Standard				
					TPR–Pfizer		TPR–Pfizer		

	Limited Catch-Up Orders* (submit by 5pm) 					Pfizer–Standard			
						Moderna/J&J/Novavax–Standard			
						TPR–Pfizer			



Delivery windows are dependent on provider's days/hours of operation. Once submitted, orders cannot be cancelled.

Watch for emails regarding order confirmations, advance shipment notices of vaccine and ancillary kits, and temperature monitoring alerts. Add [list of senders](#) to your contacts or work with your IT staff to ensure emails are not filtered to Spam or Junk folders.


* Catch-up opportunity for urgent orders on Wednesday if Monday deadline is missed.

California COVID-19 Vaccination Program


IMM-1360 (7/27/22)

For Local Health Departments

Week 1

Monday	Tuesday	Wednesday	Thursday	Friday	Monday	Tuesday	Wednesday	Thursday	Friday
Provider Order (submit by 5pm) 	LHD/MCE Review	LHD/MCE Approval by 12pm			Pfizer-Standard				
				Moderna/J&J/Novavax-Standard					
		CDPH Transmits to CDC & TPR		TPR-Pfizer		TPR-Pfizer			

Week 2

<p>Limited Catch-Up Orders* (submit by 5pm)</p> 	LHD/MCE Review	LHD/MCE Approval by 12pm	<p>CDPH Transmits to CDC & TPR</p>	Pfizer-Standard
				Moderna/J&J/Novavax-Standard
				TPR-Pfizer



Delivery windows are dependent on provider's days/hours of operation. Once submitted, orders cannot be cancelled.

Watch for emails regarding order confirmations, advance shipment notices of vaccine and ancillary kits, and temperature monitoring alerts. Add [list of senders](#) to your contacts or work with your IT staff to ensure emails are not filtered to Spam or Junk folders.

* Catch-up opportunity for urgent orders on Wednesday if Monday deadline is missed.

California COVID-19 Vaccination Program

IMM-1360 (7/27/22)

Vaccine Timing Guide: Pediatric/Adolescent/Adult

COVID-19 Vaccine Timing–Pediatric			
Routine Schedule			
Age*	Vaccine	Primary Doses	Booster Dose
6 months–4 years	Pfizer–Infant/Toddler	1st Dose → 3–8 weeks → 2nd Dose → ≥8 weeks → 3rd Dose	
6 months–5 years	Moderna–Infant/Toddler	1st Dose → 4–8 weeks → 2nd Dose	
5–11 years	Pfizer–Pediatric	1st Dose → 3–8 weeks → 2nd Dose → ≥5 months → Booster	
6–11 years	Moderna–Pediatric	1st Dose → 4–8 weeks → 2nd Dose	
Schedule if Moderately or Severely Immunocompromised			
Age*	Vaccine	Primary Doses	Booster Dose
6 months–4 years	Pfizer–Infant/Toddler	1st Dose → 3 weeks → 2nd Dose → ≥8 weeks → 3rd Dose	
6 months–5 years	Moderna–Infant/Toddler	1st Dose → 4 weeks → 2nd Dose → ≥4 weeks → 3rd Dose	
5–11 years	Pfizer–Pediatric	1st Dose → 3 weeks → 2nd Dose → ≥4 weeks → 3rd Dose → ≥3 months → Booster	
6–11 years	Moderna–Pediatric	1st Dose → 4 weeks → 2nd Dose → ≥4 weeks → 3rd Dose	

* See schedules for children in transition from a younger to older age group: [Pfizer](#) | [Moderna](#).
 ^ An 8-week interval may be preferable for some people, especially for males 12–39 years.
 View [Interim Clinical Considerations for Use of COVID-19 Vaccines](#) for details. Schedule is subject to change.

California COVID-19 Vaccination Program IMM-1396 (7/20/22) Page 1 of 3

COVID-19 Vaccine Timing–Adolescent/Adult			
Routine Schedule			
Age	Vaccine	Primary Doses	Booster Doses
12–17	Moderna–Adol/Adult	1st Dose → 4–8 weeks → 2nd Dose	
12+	Pfizer/Adol/Adult	1st Dose → 3–8 weeks → 2nd Dose → ≥5 months → 1st Booster	2nd Booster
18+	Moderna–Adol/Adult	1st Dose → 4–8 weeks → 2nd Dose → ≥5 months → 1st Booster	2nd Booster
18+	Janssen (J&J) Pfizer/Moderna preferred*	1st Dose → ≥2 months → 1st Booster	2nd Booster
18+	Novavax	1st Dose → 3–8 weeks → 2nd Dose	

1st Booster: Ages 12–17: Pfizer
 18+: Moderna/ Pfizer (mRNA preferred) or J&J*
 2nd Booster: Ages 50+: Moderna/Pfizer
 18–49: Not currently recommended.
 (If received J&J for primary and 1st booster, may consider receiving a 2nd booster of mRNA vaccine.)

^ An 8-week interval may be preferable for some people, especially for males 12–39 years.
 * Although use of mRNA COVID-19 vaccines is preferred, the Janssen vaccine may be offered in [some situations](#).
 View [Interim Clinical Considerations for Use of COVID-19 Vaccines](#) for details. Schedule is subject to change.

California COVID-19 Vaccination Program IMM-1396 (7/20/22) Page 2 of 3

18+	Novavax	1st Dose → 3 weeks → 2nd Dose
-----	---------	-------------------------------

* Although use of mRNA COVID-19 vaccines is preferred, the Janssen vaccine may be offered in [some situations](#).
 View [Interim Clinical Considerations for Use of COVID-19 Vaccines](#) for details. Schedule is subject to change.

California COVID-19 Vaccination Program IMM-1396 (7/20/22) Page 3 of 3

Calendario de la Vacuna COVID-19: Pediátrico/Adolescente/Adulto

Calendario de la Vacuna COVID-19: Pediátrico			
Calendario Rutinario			
Edad	Vacuna	Dosis Primarias	Dosis de Refuerzo
6 meses-4 años	Pfizer-Bebés/ Niños Pequeños	1ra Dosis → 3-8 semanas → 2da Dosis → ≥8 semanas → 3ra Dosis	
6 meses-5 años	Moderna-Bebés/ Niños Pequeños	1ra Dosis → 4-8 semanas → 2da Dosis	
5-11 años	Pfizer-Pediátrico	1ra Dosis → 3-8 semanas → 2da Dosis → ≥5 meses → Refuerzo	
6-11 años	Moderna-Pediátrico	1ra Dosis → 4-8 semanas → 2da Dosis	
Calendario si está Moderadamente o Gravemente Inmunocomprometido			
Edad	Vacuna	Dosis Primarias	Dosis de Refuerzo
6 meses-4 años	Pfizer-Bebés/ Niños Pequeños	1ra Dosis → 3 semanas → 2da Dosis → ≥8 semanas → 3ra Dosis	
6 meses-5 años	Moderna-Bebés/ Niños Pequeños	1ra Dosis → 4 semanas → 2da Dosis → ≥4 semanas → 3ra Dosis	
5-11 años	Pfizer-Pediátrico	1ra Dosis → 3 semanas → 2da Dosis → ≥4 semanas → 3ra Dosis → ≥3 meses → Refuerzo	
6-11 años	Moderna-Pediátrico	1ra Dosis → 4 semanas → 2da Dosis → ≥4 semanas → 3ra Dosis	

^ Un intervalo de 8 semanas puede ser preferible para algunas personas, especialmente para hombres de 12 a 39 años.

Consulte las [Consideraciones Clínicas Provisionales para el uso de Vacunas Contra el COVID-19](#) para obtener más información. El calendario esta sujeto a cambios.

California COVID-19 Vaccination Program IMM-13965 (7/25/22) Página 1 de 3

Calendario de la Vacuna COVID-19: Adolescente / Adulto			
Calendario Rutinario			
Edad	Vacuna	Dosis Primarias	Dosis de Refuerzo
12-17	Moderna-Adol/Adulto	1ra Dosis → 4-8 semanas → 2da Dosis	
12+	Pfizer/Adol/Adulto	1ra Dosis → 3-8 semanas → 2da Dosis → ≥5 meses → 1er Refuerzo	Edades 12-17: Pfizer
18+	Moderna-Adol/Adulto	1ra Dosis → 4-8 semanas → 2da Dosis → ≥5 meses → 1er Refuerzo	Edades 18-49: Actualmente no recomendado. (Si recibió J&J para el refuerzo primario y el 1er refuerzo, puede considerar recibir un 2do refuerzo de la vacuna de ARNm.)
18+	Janssen (J&J) Pfizer/Moderna preferido*	1ra Dosis → ≥2 meses → 1er Refuerzo	
18+	Novavax	1ra Dosis → 3-8 semanas → 2da Dosis	

^ Un intervalo de 8 semanas puede ser preferible para algunas personas, especialmente para hombres de 12 a 39 años.

* Aunque se prefiere el uso de vacunas ARNm COVID-19, la vacuna Janssen se puede ofrecer en [algunas situaciones](#). Consulte con las [Consideraciones Clínicas Provisionales para el uso de Vacunas Contra el COVID-19](#) para obtener más información. El calendario esta sujeto a cambios.

California COVID-19 Vaccination Program IMM-13965 (7/25/22) Pagina 2 of 3

Calendario de la Vacuna COVID-19: Adulto			
Calendario Rutinario			
Edad	Vacuna	Dosis Primarias	Dosis de Refuerzo
18+	Pfizer	1ra Dosis → 3-8 semanas → 2da Dosis → ≥5 meses → 1er Refuerzo	Edades 18-49: Actualmente no recomendado. (Si recibió J&J para el refuerzo primario y el 1er refuerzo, puede considerar recibir un 2do refuerzo de la vacuna de ARNm.)
18+	Moderna	1ra Dosis → 4-8 semanas → 2da Dosis → ≥5 meses → 1er Refuerzo	Edades 18-49: Actualmente no recomendado. (Si recibió J&J para el refuerzo primario y el 1er refuerzo, puede considerar recibir un 2do refuerzo de la vacuna de ARNm.)
18+	Janssen (J&J)	1ra Dosis → ≥2 meses → 1er Refuerzo	
18+	Novavax	1ra Dosis → 3-8 semanas → 2da Dosis	

California COVID-19 Vaccination Program IMM-13965 (7/25/22) Pagina 3 of 3

CDPH IZB Program and Product Training

IMMUNIZATION BRANCH

Vaccination Program

Training

Program Enrollment

Vaccine Management

Vaccine Administration

Reporting Requirements

Training and Resources

Required Training for Participation in the California COVID-19 Vaccination Program

Providers and key practice staff storing, handling, managing, or administering vaccines must complete the required training to meet federal and state program requirements.

Program Training

This training prepares sites to incorporate program requirements into clinic protocols and identifies key resources for use on the job. Organization & Location Coordinators must complete the required program training in myCAvax during enrollment but may access the lessons below. Review times are approximate.

Interactive Lessons	Organization* Coordinator	Location† Coordinator
Program Requirements (15 mins) (PDF)	✓	✓
Orders and Distribution (5 mins) (PDF)	–	✓
Storage and Handling (15 mins) (PDF)	–	✓
Vaccine Management (10 mins) (PDF)	–	✓
VaccineFinder (5 mins) (PDF)	✓	✓

* Organization Coordinators complete Section A of the provider enrollment application and are responsible for implementing vaccination program requirements for their provider organization.

† Location Coordinators complete Section B (location enrollment) and act as vaccine coordinators for their provider location.

COVID-19 Vaccine Product Training

This training shows staff how to prepare, administer, store, and handle COVID-19 vaccine products and report adverse events to VAERS. To prepare in advance of initial vaccine shipments, print and review summary sheets—**only for products your location will be ordering.** Review times vary by learner role & technical experience.

Pfizer-BioNtech	Location Coordinator	Vaccinator	Provider
<ul style="list-style-type: none"> Vaccine Preparation & Administration Ages 6M-4Y Ages 5-11 Ages 12+ (PDF) Mixing Diluent & Vaccine (PDF) Storage & Handling: Ages 6M-4Y Ages 5-11 Ages 12+ (PDF) 	✓	✓	✓
<ul style="list-style-type: none"> Delivery Checklist (PDF) 	✓	–	–

Moderna	Location Coordinator	Vaccinator	Provider
<ul style="list-style-type: none"> Vaccine Preparation & Administration & video Ages 6M-5Y Ages 18+ (PDF) Storage & Handling: Ages 6M and older (PDF) 	✓	✓	✓

Janssen (J&J)	Location Coordinator	Vaccinator	Provider
<ul style="list-style-type: none"> Vaccine Preparation & Administration (PDF) 	✓	✓	✓
<ul style="list-style-type: none"> Storage & Handling (PDF) 	✓	–	–

Novavax	Location Coordinator	Vaccinator	Provider
<ul style="list-style-type: none"> Vaccine Preparation & Administration (PDF) 	✓	✓	✓
<ul style="list-style-type: none"> Storage & Handling (PDF) 	✓	–	–

CDPH Immunization Branch Program and Product Training

14

COVID-19 Vaccine Provider FAQs

- Answers to provider questions
- Updated weekly: last updated 07/29/2022
- Currently in its 82nd iteration!



Q: When will the Novavax vaccine be available in My Turn?

A: The My Turn team expects Novavax to be available in My Turn in late August, 2022. In the meantime, clinics can use vaccines.gov to allow the public to search for and make appointments. Please use these instructions to [enter location information manually](#) or use [file upload](#).



Q: Can COVID-19 vaccine Providers submit Medi-Cal reimbursement claims for individuals 6 months and older?

A: Yes. COVID-19 vaccine Providers may now submit Medi-Cal reimbursement claims for individuals 6 months and older. For further information, please visit the [Department of Health Care Services \(DHCS\) COVID-19 Vaccine for Children 6 Months and Up News Flash](#) and [DHCS COVID-19 Medi-Cal Response Page](#).

California COVID-19 Vaccination Program Provider FAQs

For Prospective, Newly Enrolled, and Current California COVID-19 Vaccine Providers. Providers may also visit [California COVID-19 Vaccination Program](#) for information and updates.

Directions: [Click on a category to be directed to related FAQs.](#)

Contents

New and Updated FAQs	2
Pediatric Providers	3
Vaccine Program Management	4
Provider Enrollment	5
Ordering	5
Distribution/Redistribution	5
Vaccine Administration	6
Additional/Booster Doses	9
Vaccine Storage & Handling	10
Inventory	11
Reporting	11
Billing & Reimbursement	12
Communication Resources	13

[Provider FAQs on EZIZ, Updated Weekly](#)



Vaccinate ALL 58



Pfizer COVID-19 Vaccine Updates & Trainings

Date & Time (linked)	Password
Tuesday, August 02 - 12PM	HmHmJjPT536
Wednesday, August 03 - 9AM	SXbpceVW332
Thursday, August 04 - 9AM	XBdEXrVn792
Tuesday, August 09 - 12PM	yqJDdwJD628
Wednesday, August 10 - 9AM	24pfRM9yn4W
Thursday, August 11 - 9AM	V2HfiYJd3m8
Tuesday, August 16 - 12PM	mpShpynK233
More sessions listed! NOTE: All times listed here are PDT.	

Audience:

Providers and immunization staff

Session Topics Include:

- New vaccine presentation (**Maroon Cap**) for individuals 6 months through 4 years of age
- FDA approvals, authorizations - including recent authorizations
- **Gray Cap**, Comirnaty®
- Use of each vaccine presentation, including storage, handling, preparation, and administration

Moderna Infant/Toddler Vaccine Video Trainings



Link to Video Resources



[How to Withdraw a 0.25mL dose: Infant/Toddler 6 months-5 years](#)



[How to Withdraw a 0.5mL Dose for Pediatrics 6 Years-11Years](#)

US-COV-2200159 06/2022

COVID-19 Vaccination Program Webinars and Training for Providers

Week of August 1, 2022

Note: Calendar subject to change

	Monday 8/1	Tuesday 8/2	Wednesday 8/3	Thursday 8/4	Friday 8/5
myCAvax, My Turn, and Combined Office Hours and Events	CDPH Therapeutics Webinar for Providers 12:00 pm – 1:00 pm	Pfizer BioNTech COVID-19 Vaccine Training & Education* 12:00 pm – 1:00 pm PW: HmHmJjPT536	Pfizer BioNTech COVID-19 Vaccine Training & Education* 9:00 am – 10:00 am PW: SXbpceVW332	Pfizer BioNTech COVID-19 Vaccine Training & Education* 9:00 am – 10:00 am PW: XBdEXrVn792	Provider Office Hours 9:00 am – 10:00 am

* Pfizer topics vary by day and include the latest information about use of each vaccine presentation, including storage, handling, preparation, and administration; recent medical updates and FDA authorizations, healthcare provider resources, and a Q&A session.

View On Demand	<ul style="list-style-type: none">Intro to My Turn Onboarding (v. 1/4/22)Latest Features in My Turn (*Requires My Turn Login)	<ul style="list-style-type: none">Latest Features in myCAvax for Providers (*Requires myCAvax Login)myCAvax Release Notes for LHJs and CDPH Users (*Requires myCAvax Login)COVID-19 Crucial Conversations Archived Webinars and Slides	<ul style="list-style-type: none">Provider 101 Account Enrollment: Section A: Organization Application (v. 10/21/21)Provider 101 Account Enrollment: Section B: Location Application (v. 10/21/21)Provider Office Hours and MCE Office Hours Archived Sessions
----------------	--	--	--

Help

Website: www.eziz.org/covid, [FAQs](#)
General email: covidcallcenter@cdph.ca.gov
CDPH Provider Call Center: 1-833-502-1245, 8am-6pm

My Turn email: myturnonboarding@cdph.ca.gov
myCAvax Help Desk Email: myCAvax.HD@accenture.com
Phone: (833) 502-1245


August is National Immunization Awareness Month!

🏠 National Immunization Awareness Month (NIAM)


- Toolkit for Reaching Healthcare Professionals +
- Toolkit for Reaching Parents and Patients +
- Sample Newsletter Content
- Graphics


Get Back on Track with Routine Vaccines

National Immunization Awareness Month (NIAM) is an annual observance held in August to highlight the importance of vaccination for people of all ages. **Use these resources to assist you in communicating about vaccinations during August and throughout the year.**




COVID-19 Vaccination


 [For Healthcare Professionals](#)

 [For You and Your Family](#)


Related Links

- [Vaccines & Immunizations](#)
- [Interactive Vaccine Guide](#)
- [Adult Vaccine Assessment Tool](#)
- [Immunization Partners Website](#)
- [PHF Immunization Center](#) 

Encouraging Routine Childhood Vaccinations



Featured Resource for Healthcare Professionals



KidsVaxGrant 2.0

Nisha Gandhi, CDPH



PHC* KidsVaxGrant 2.0 Launching Monday, August 1!



- The California Department of Public Health has appropriated approximately \$10 million to support KidsVaxGrant 2.0.
- Providers can receive up to \$35,000 to support eligible pediatric providers administering the COVID-19 vaccine.



PHC* KidsVaxGrant 2.0 Funding Opportunities

Eligibility:

- **Providers serving pediatric populations who've placed at least one complete order of an infant/toddler COVID-19 vaccine and are newly enrolled in the California COVID-19 Vaccine Program (myCAvax) may receive \$10K to support enrollment and launching a vaccination center.** Those that enroll in myCAvax from December 17, 2021 to October 14, 2022, will qualify.
- **Providers serving pediatric populations vaccinating infants/toddlers against COVID-19 already enrolled in the California COVID-19 Vaccine Program (myCAvax), who are expanding operating hours by a minimum of 25 hours, may be eligible for \$25K, per site.**
 - Expanded hours must be outside of normal or existing clinic hours and must be completed within 120 days of the application's approval (not retroactive).

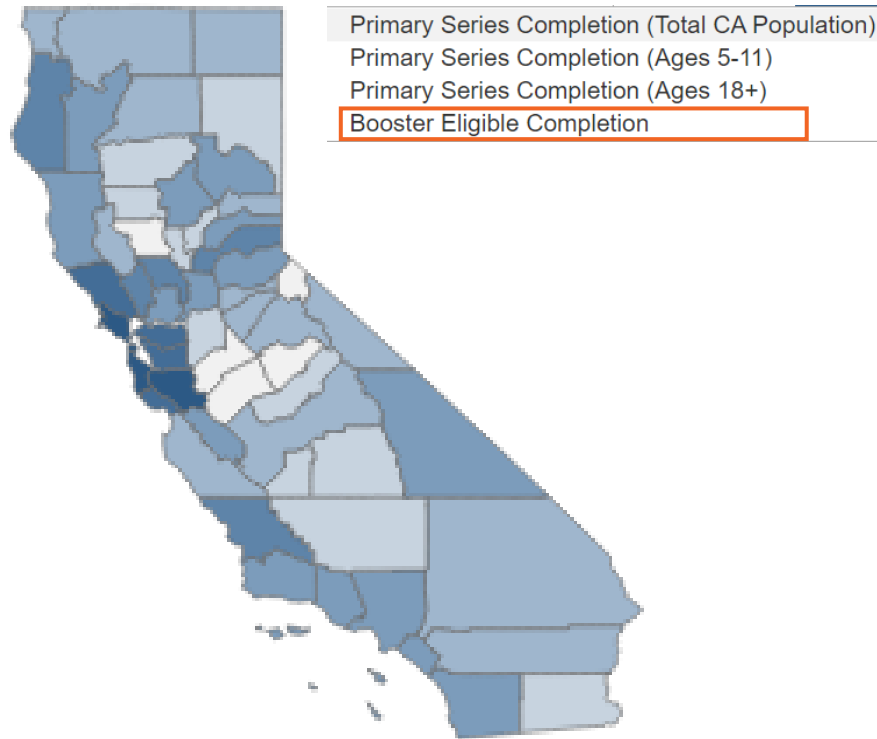
Providers serving pediatric populations that were previously awarded a KidsVaxGrant are eligible to apply for KidsVaxGrant 2.0!

Vaccine Administration Data

Elizabeth Reosti, CDPH

Vaccine Administration Summary

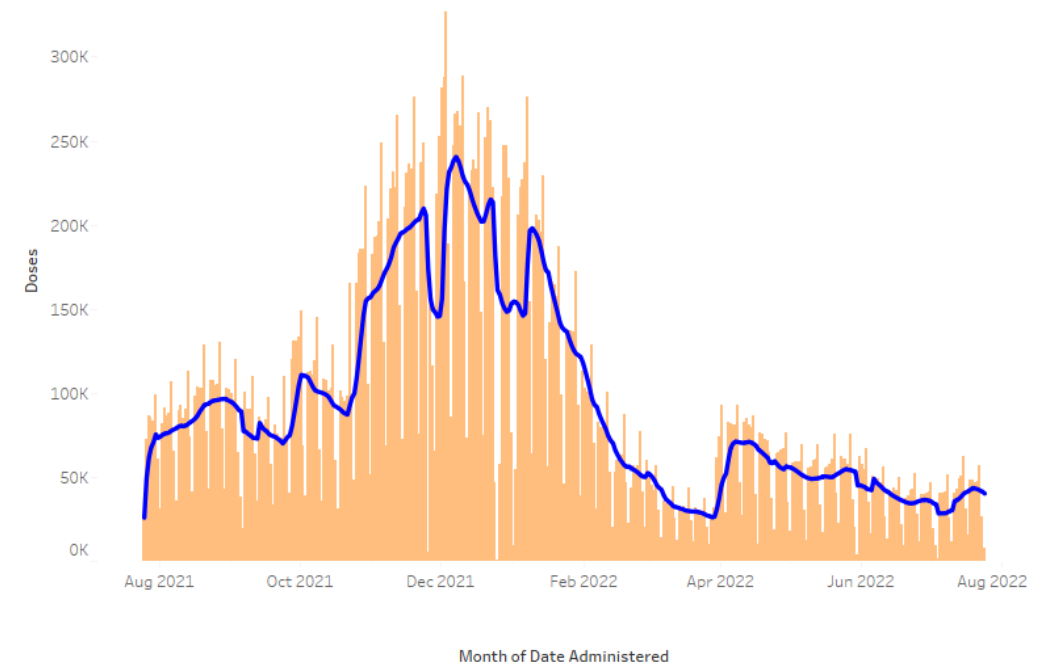
as of July 25, 2022



78,476,295

Total Doses Administered:

Daily Doses Administered: **Statewide**



Trends in Vaccine Administration

as of July 25, 2022

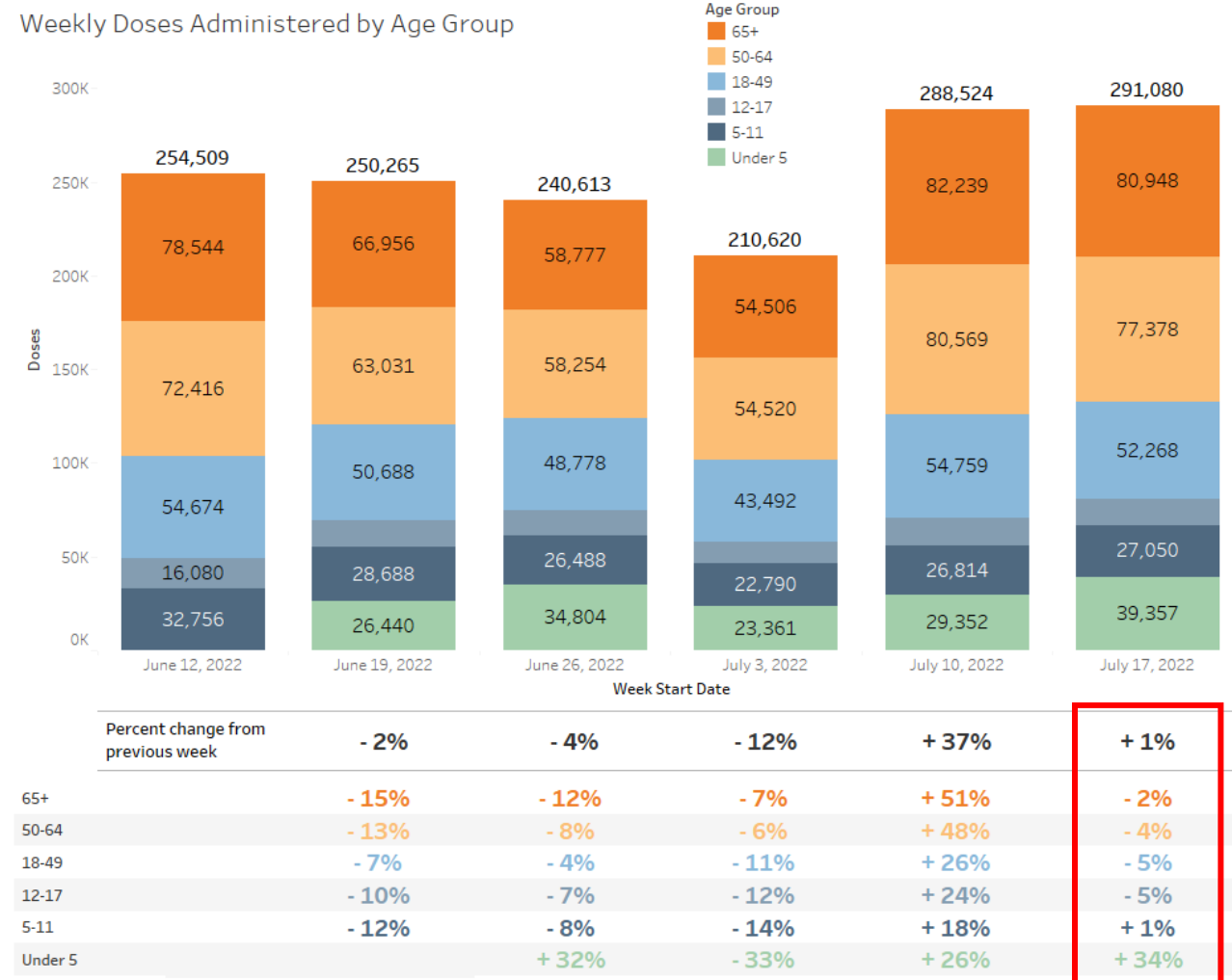
New Eligibility Groups Driving Demand

- First doses among Under 5
- First boosters among 5-11-year-olds
- Second boosters among 50+ year-olds

FDA NEWS RELEASE

Coronavirus (COVID-19) Update: FDA Authorizes Moderna and Pfizer-BioNTech COVID-19 Vaccines for Children Down to 6 Months of Age

For Immediate Release: June 17, 2022



California and the Nation

as of July 18, 2022

California

Total Doses Administered

78,156,577

195,678 per 100K

Infant/Toddlers with 1+ dose

120.4K

5,370 per 100K

Nationwide

Total Doses Administered

601,479,801

182,543 per 100k

Infant/Toddlers with 1+ dose

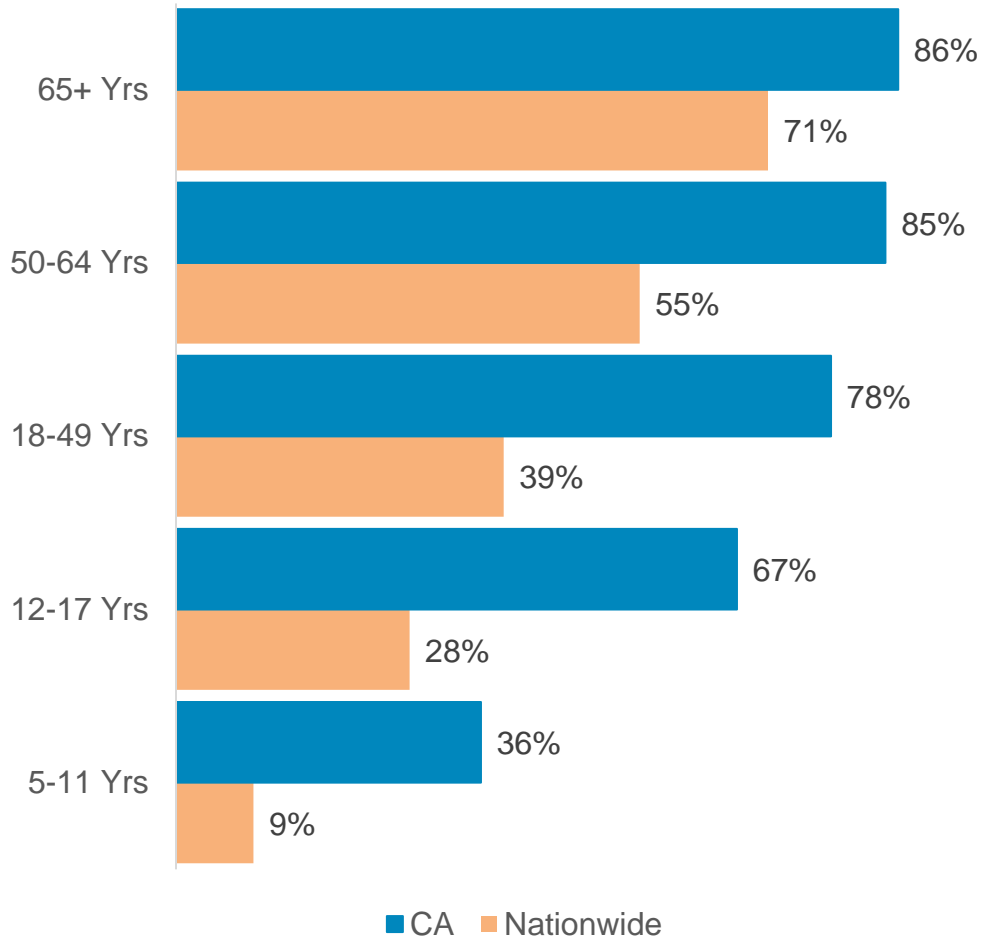
544.1K

3,157 per 100k

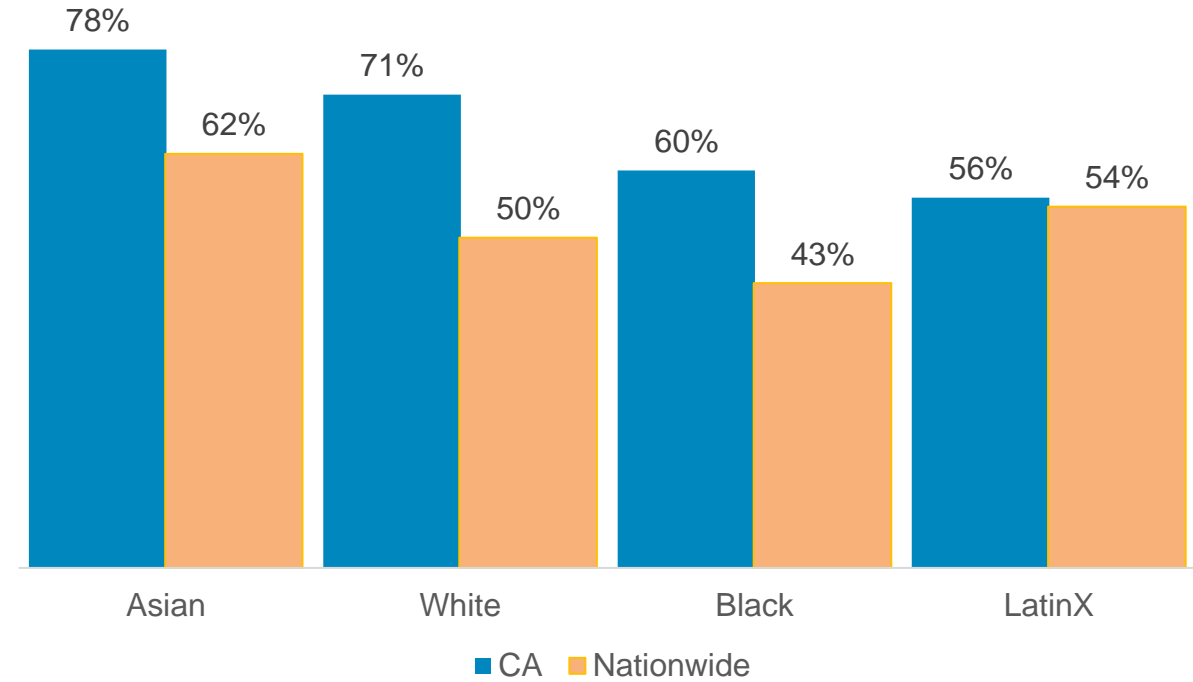
California and the Nation

as of July 25, 2022

Primary Series Complete by Age



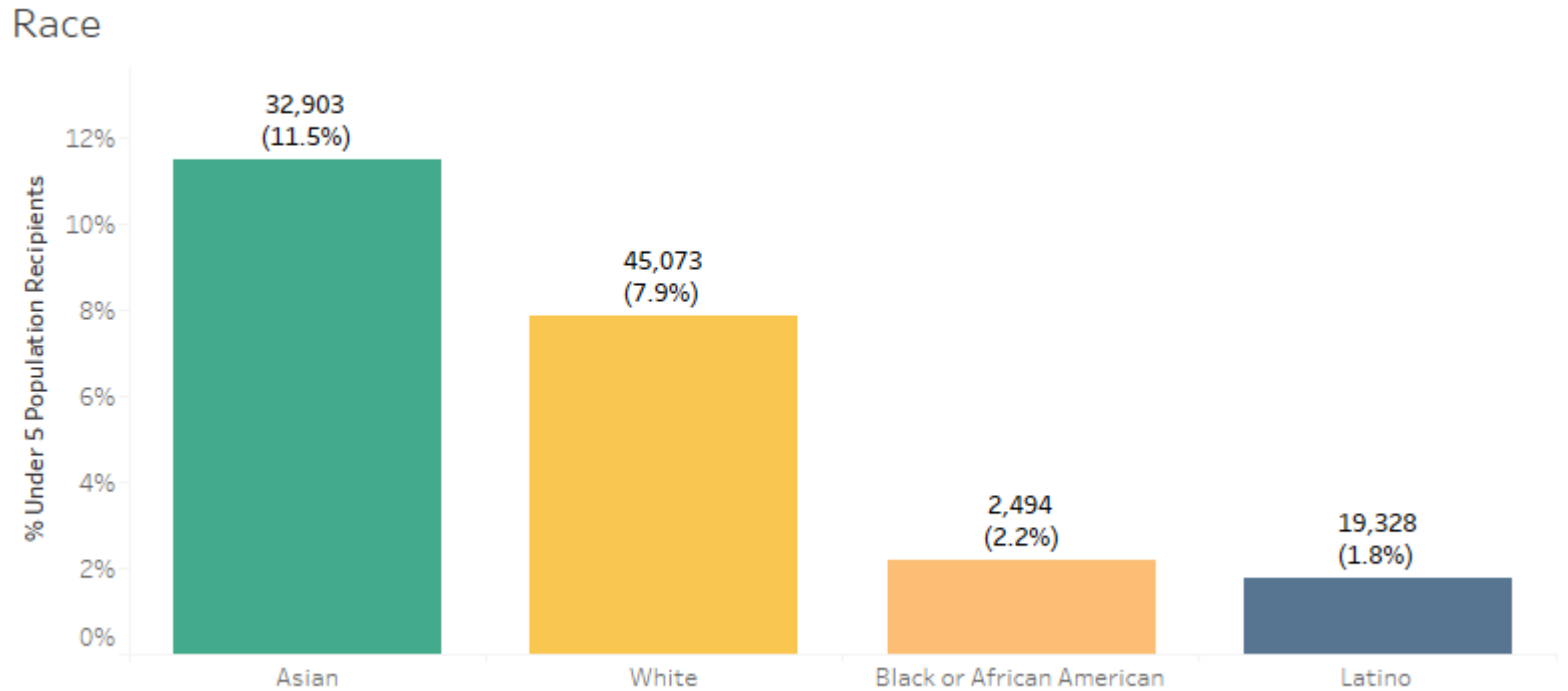
Primary Series Complete by Race & Ethnicity



Infant/Toddler Vaccination Rates

as of July 25, 2022

Lower vaccination rates
among Black and
Latinx children after the
first five weeks

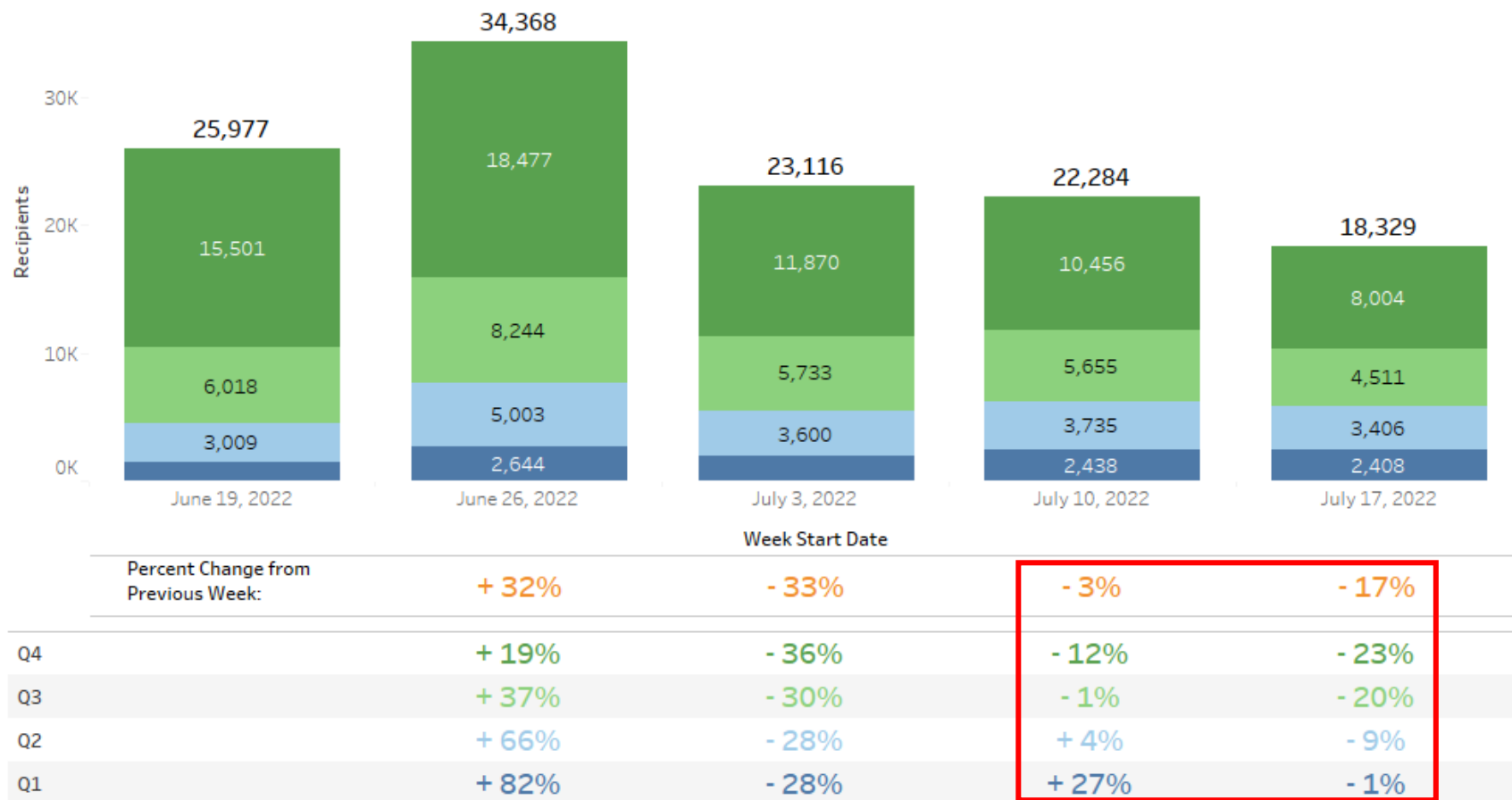


Infant/Toddler Vaccination Trends

as of July 25, 2022

Weekly New Under 5 Initiating Primary Series by VEM: **Statewide**

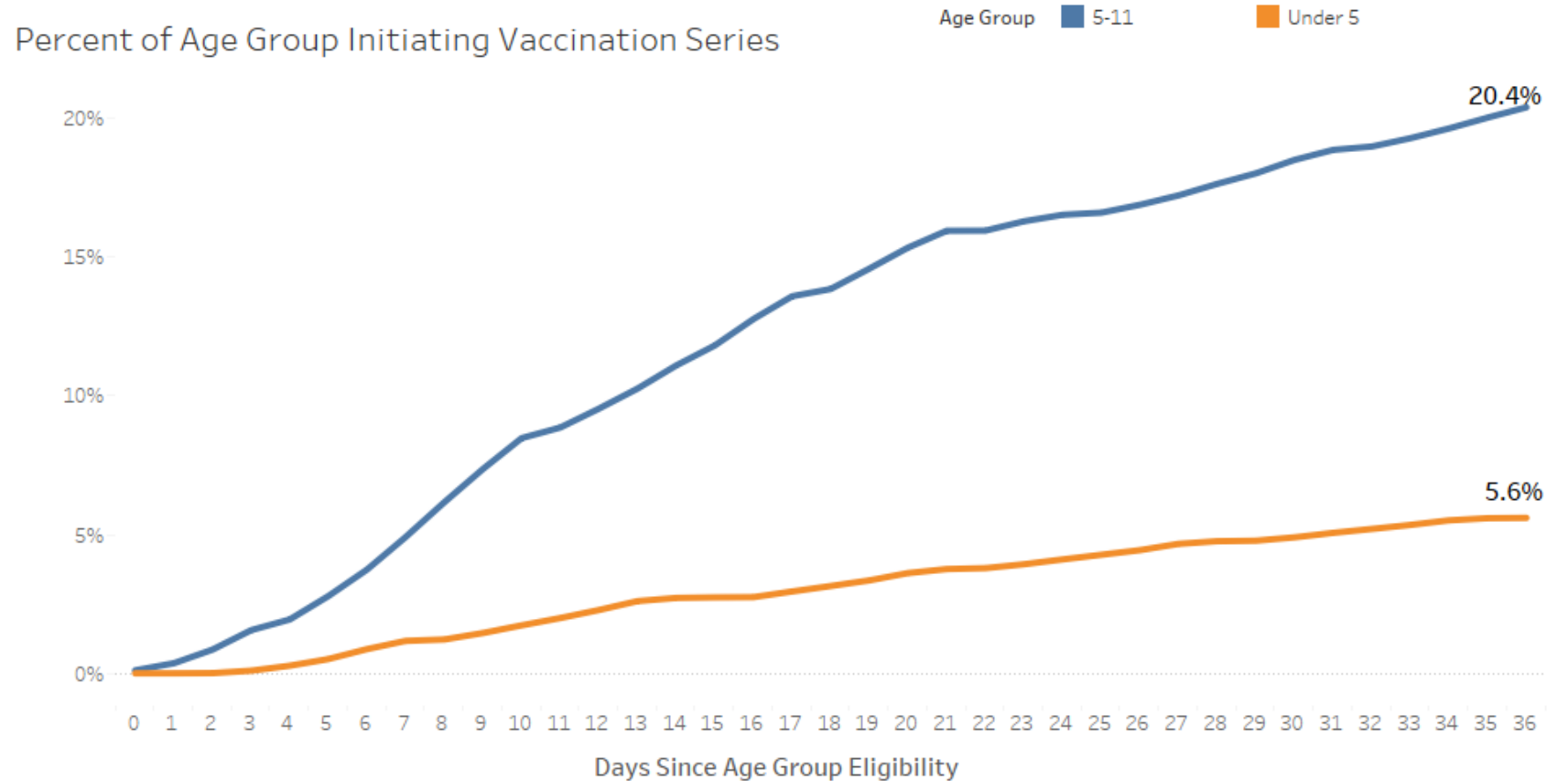
Modest uptake in Under 5 population, higher among Quartile 3 and Quartile 4



Infant/Toddler Vaccination Trends

as of July 25, 2022

Slower roll out
over the first 36
days of eligibility
for the youngest
eligibility group



Data Summary

as of July 25, 2022

Latest Metrics

78.5 Million doses administered

291K doses administered in previous week (+1% point change)

18K new Infant/Toddler recipients (-17% point change)

System Updates

- Vaccination data for children under 5 years of age added to all dashboards
- 4th doses included in overall dose count, but not currently displayed in immunization status

Clinical Update

Floria Chi, M.D., CDPH

Novavax COVID-19 Vaccine Updates

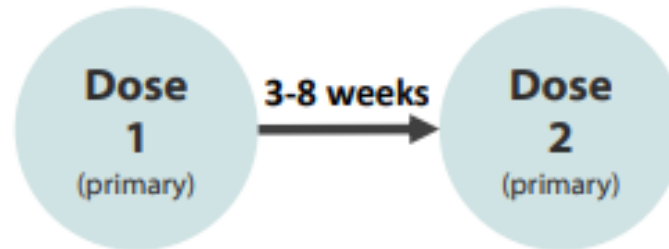
- 7/13/2022:
 - Food and Drug Administration (FDA) Emergency Use Authorization granted for Novavax
- 7/19/2022:
 - Advisory Committee on Immunization Practices (ACIP) and Centers for Disease Control and Prevention (CDC) recommend use as primary series in adults 18+
- 7/22/2022:
 - Approval by Western States Scientific Safety Review Workgroup (WSSSRW)

Novavax COVID-19 Vaccine Schedule

People who are **NOT** moderately or severely immunocompromised

Novavax
(18 years and
older)

Primary Series



People who **ARE** moderately or severely immunocompromised

Novavax
(18 years and
older)

Primary Series



Mixed Primary Series

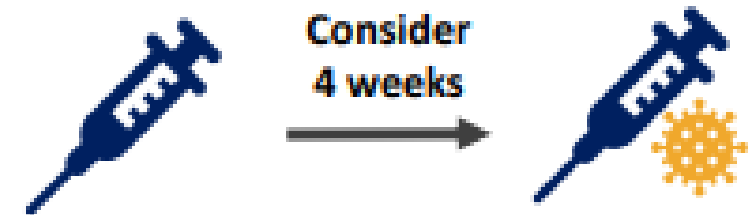
- Mixed primary series is not authorized
- If mixed series is inadvertently administered, the series is considered complete, and no doses need to be repeated.
- Exceptions
 - Same vaccine unavailable
 - First dose unknown
 - Contraindication
 - These do not need to be reported to VAERS.

Coadministration

- In general, COVID-19 vaccines may be administered without regard to timing of other vaccines.
 - ☑ Same day
 - ☑ Any time before
 - ☑ Any time after
- Routine administration of all age-appropriate doses of vaccines simultaneously is recommended for people for whom no specific contraindications exist at the time of the healthcare visit.

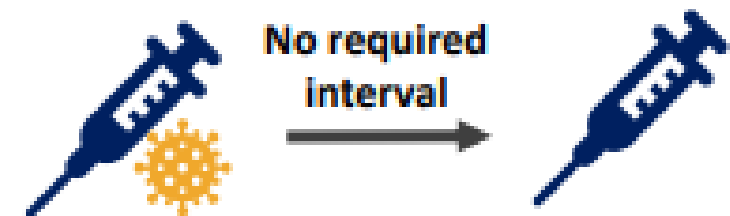
Coadministration: Orthopox Vaccine

If orthopoxvirus vaccine administered first: Might consider waiting 4 weeks before receiving a Moderna, Novavax, or Pfizer-BioNTech vaccine



If Moderna, Novavax, or Pfizer-BioNTech administered first:

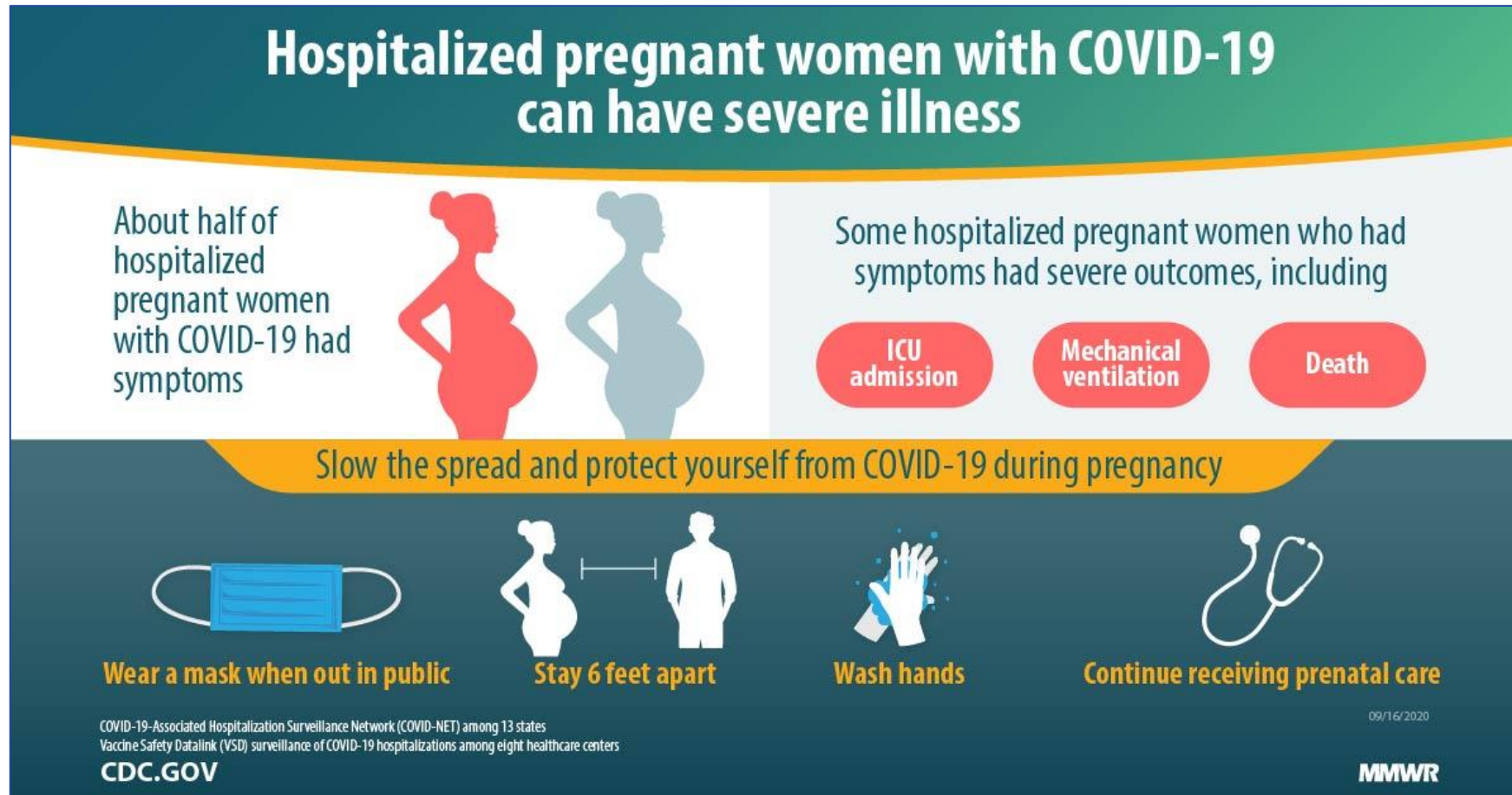
No minimum interval necessary before receiving orthopoxvirus vaccination for prophylaxis in the setting of an outbreak



Outline

- COVID-19 in pregnancy
 - Risks to mother and baby
- COVID-19 vaccine safety in pregnancy
- Benefits of COVID-19 vaccination in pregnancy
 - Benefits to mother and baby
- Passing on immunity to infants

COVID-19 in Pregnancy Associated with Adverse Events



COVID-19 in Pregnancy

- Rates of hospitalization, O2 requirement, and ICU admission are greater in COVID-19 positive pregnant patients than COVID-19 positive non-pregnant women.
- Increased risk of Cesarean section and preterm delivery in COVID-19 positive patients
- CDC analysis of ~400,000 women aged 15-44 with symptomatic COVID-19 showed an increased risk of ICU admission, invasive ventilation, ECMO (extracorporeal membrane oxidation), and death among pregnant versus nonpregnant women.
- Unvaccinated pregnant women represented 77.4% of infections, 90.9% of admissions, and 98% of ICU admissions in a study performed in Scotland comparing vaccinated and unvaccinated pregnancies.

Are COVID-19 Vaccines Safe in Pregnancy?

Pregnant women were excluded from the initial randomized control trials (RCTs) of the mRNA COVID-19 vaccines.

Despite this exclusion, there were several pregnancies in both the placebo and vaccinated groups of the Pfizer/BioNTech, Moderna, and AstraZeneca clinical trials.

Outcome: No difference in the rate of pregnancies or miscarriages between the vaccinated and placebo groups.

Are COVID-19 Vaccines Safe in Pregnancy?

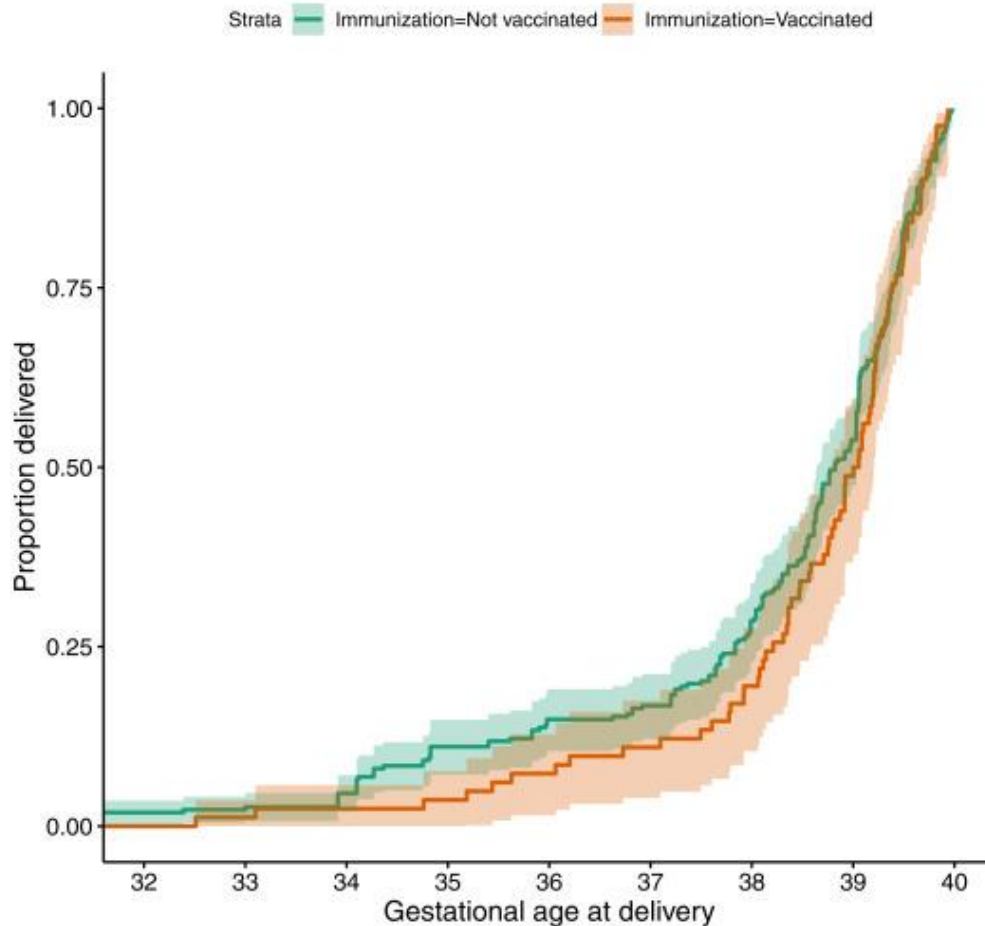
Table 4

Summary of maternal delivery and pup data from the female rats in the delivery cohort administered control (saline) or BNT162b2.

	Control (saline)	BNT162b2
Delivery Cohort (n) ^a	22	21
Gestation Length (days)	22.1 ± 0.4 ^b	22.0 ± 0.7
Number of implantation sites	14.3 ± 2.2	14.2 ± 2.2
Pups delivered per litter (PND 0)	13.3 ± 2.5	13.1 ± 3.1
Number live pups at birth (mean/litter)	13.0 ± 2.5	13.0 ± 3.1
Live Birth Index ^c	98 %	99.3 %
Pup Viability Index (PND 0–4) ^d	99 %	98.9 %
Pup Weaning Index (PND 4–21) ^{e,f}	99.4 %	100 %
Pup Mortality (PND 0–21)	10	5
Pup body weight on PND 4 (g) ^f	9.60 ± 1.25	9.75 ± 1.31
Pup body weight on PND 21(g) ^f	54.75 ± 4.07	55.23 ± 2.71

Both Moderna and Pfizer have toxicology data on safety of COVID-19 vaccines in pre-clinical trials showing no adverse effects on female reproduction, fetal or embryonic development or postnatal development.

Are COVID-19 Vaccines Safe in Pregnancy?



UK study showed no difference in the rate of adverse outcomes on multiple measures (preterm birth, small birth weight for gestational age (SGA), congenital malformations, all-cause hospitalizations, and infant death) between vaccinated and unvaccinated pregnant women.

COVID-19 Vaccination in Pregnancy



COVID-19 vaccination* among pregnant people is associated with

60%
↓

about 60% reduced risk of COVID-19 hospitalization in babies younger than 6 months old

People who are pregnant, may become pregnant, or are breastfeeding should get vaccinated against COVID-19

bit.ly/MMWR7107e3

Test-negative, case-control study among infants at 20 pediatric hospitals in 17 states during July 1, 2021–January 13, 2022.
*Completed a 2-dose primary mRNA COVID-19 vaccination series during pregnancy (dose 1 before pregnancy and dose 2 during or shortly after pregnancy)

MMWR

02/15/2022



COVID-19 Vaccination in Pregnancy in the Delta & Omicron Periods

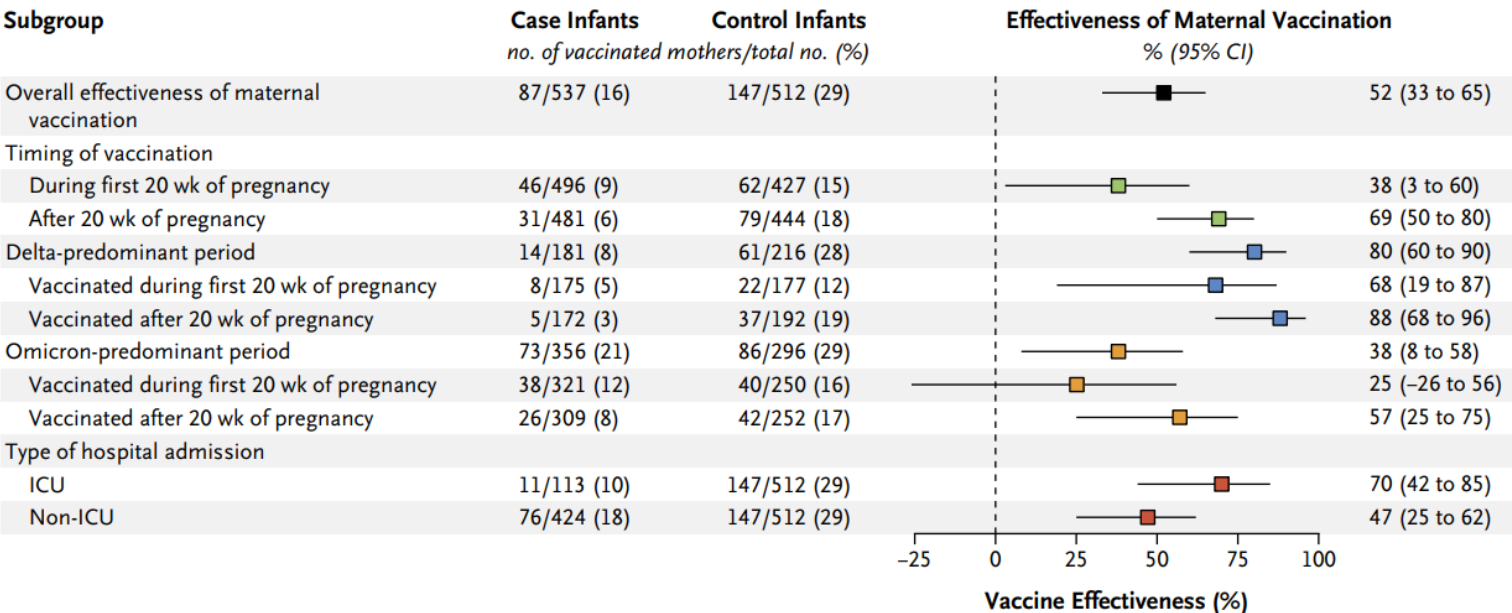
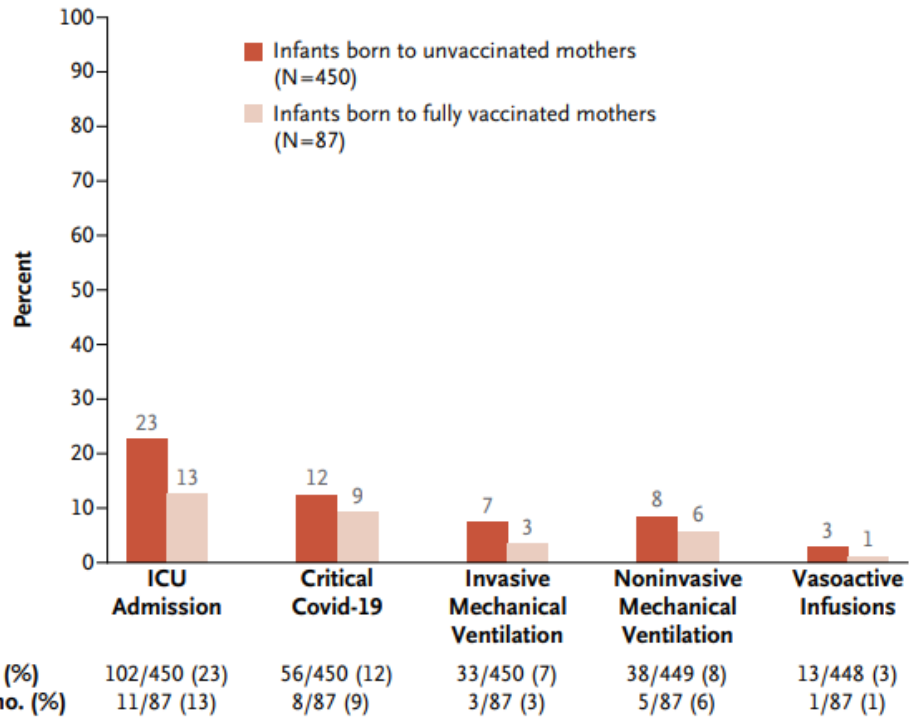


Figure 3. Effectiveness of Maternal Two-Dose mRNA Vaccination against Hospitalization for Covid-19 among Infants, Stratified According to Vaccination Timing, Variant, and Type of Admission.

The delta-predominant period was defined as July 1, 2021, to December 18, 2021. The omicron-predominant period was defined as December 19, 2021, to March 8, 2022. The timing of maternal vaccination was based on the date of receipt of the second dose of a two-dose series of an mRNA Covid-19 vaccine during pregnancy. Gestational age was missing for 3 infants who had been born to vaccinated mothers with known timing of the second dose; for these infants, classification of vaccination timing was based on a gestational age of 40 weeks. For 16 infants who had been born to mothers who had been fully vaccinated during pregnancy, dates of vaccination were not available to determine the vaccination timing during pregnancy. Vaccine effectiveness was calculated as (1 – adjusted odds ratio) x 100, where the odds ratio is the odds of maternal vaccination among mothers of case infants as compared with control infants. The widths of the confidence intervals have not been adjusted for multiplicity and should not be used in place of a hypothesis test.

- Overall maternal vaccine effectiveness (VE) was 52% in preventing COVID-19 hospitalization of infants <6 months of age.
- Maternal VE was 70% in preventing ICU admission of infants <6 months of age.

COVID-19 Vaccination in Pregnancy in the Delta & Omicron Periods



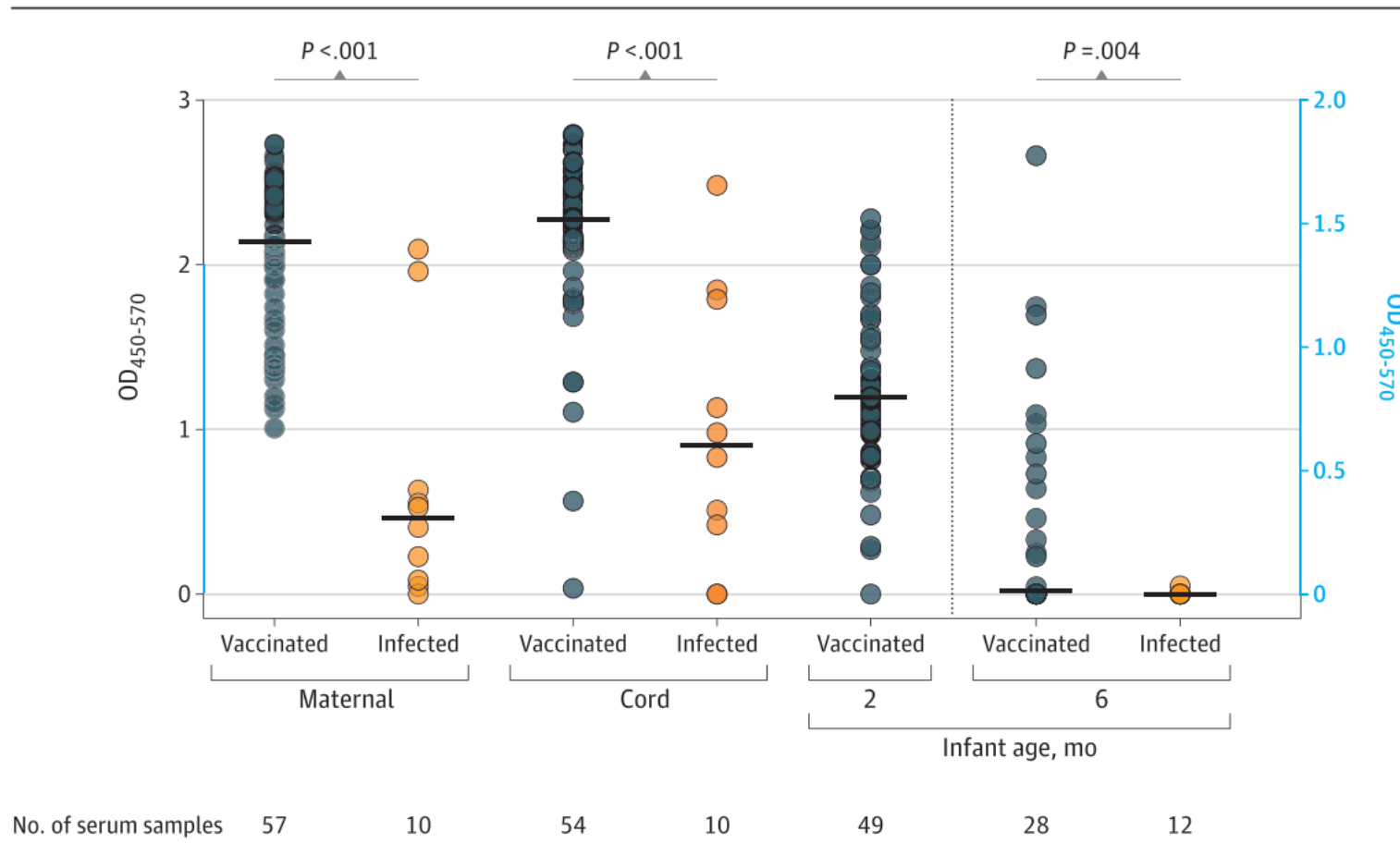
Infants born to unvaccinated mothers had more severe COVID-19 outcomes including ICU admission, critical COVID-19, and the need for life-supporting interventions than infants born to vaccinated mothers.

Figure 2. Clinical Severity of Covid-19 as Indicated by Outcomes among Case Infants, According to Maternal Vaccination Status.

Critical Covid-19 was defined as Covid-19 leading to life-supporting interventions (i.e., noninvasive mechanical ventilation [bilevel positive airway pressure or continuous positive airway pressure], invasive mechanical ventilation, vasoactive infusions, or extracorporeal membrane oxygenation) or to death. An infant could have been included in more than one outcome category. Two infants who had been born to unvaccinated mothers (2 of 450 infants [$<1\%$]) received extracorporeal membrane oxygenation. An additional 2 infants who had been born to unvaccinated mothers (2 of 442 infants [$<1\%$]) died; among the 450 infants who had been born to unvaccinated mothers, 8 had mothers for whom data on hospital discharge were not available. ICU denotes intensive care unit.

Passing Immunity from Mother to Baby

Figure. Persistence of Antibody in Infants After Maternal COVID-19 Vaccination or Infection



- Comparison of antibody titers in infants born to vaccinated mothers versus those born to SARS-CoV-2 infected mothers (20-32 weeks) showed higher anti-S
- Persistence of antibodies continued out to 6 months of age

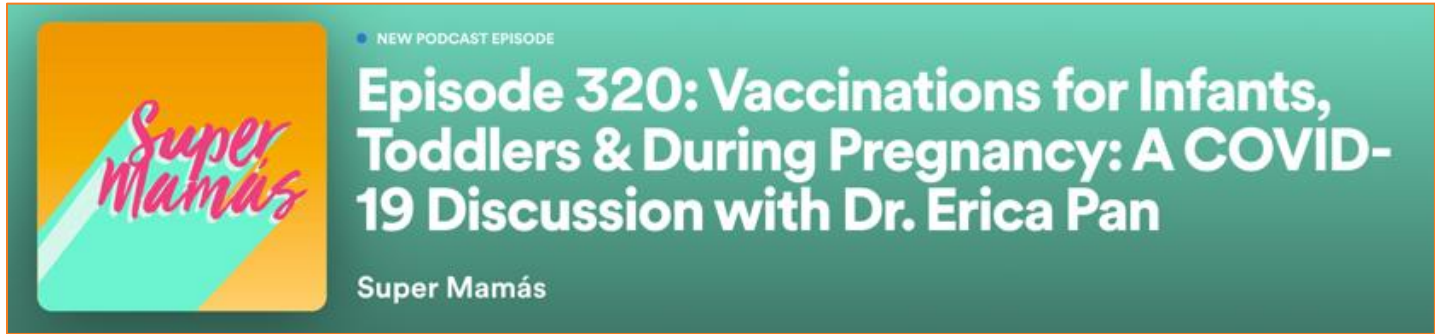
Strategies

- Encourage prenatal healthcare providers to:
 - Talk to their patients about COVID-19 vaccines as early as possible
 - Provide COVID-19 vaccines in obstetric clinics
- Public messaging surrounding the benefits of COVID-19 vaccination in pregnancy
 - Decrease complications
 - Passing of immunity
- Continue to update messaging as new data become available
 - Role of boosters
 - Risk of new variants

Resources for Pregnant People

- American College of Obstetrics and Gynecology (ACOG)
 - [FAQs for Patients on COVID-19 Vaccine in Pregnant and Lactating People](#)
 - [COVID-19 Vaccines and Pregnancy: Conversation Guide for Clinicians | ACOG](#)
- CDC [Information about COVID-19 Vaccines for People Who are Pregnant or Breastfeeding](#)
 - [MotherToBaby](#) experts are available to answer questions in English or Spanish, Monday-Friday 8am-5pm at 1-866-626-6847 or online.
- CDC [Myths and Facts about COVID-19 Vaccines](#)
 - Includes information about fertility, menstrual cycles
- CDC [Poster: COVID-19 and Pregnancy](#)
- CDPH [Communications Toolkit for Pregnancy and COVID-19 Vaccine](#)

Communication Tools



Super Mamas Spotify Podcast



CDPH Facebook Live



Legislative PSA



SF Chronicle



Facebook Live

Storage & Handling

Kate McHugh, CDPH

Novavax Storage and Handling

- 10 dose multi-dose vials
- Cap color: Royal Blue
- Refrigerated storage (2°C to 8°C) until expiration date
 - The first vials to be shipped will have a nine-month expiry date
 - Expiration dates can be found on: [Novavax Expiry Website](#)
- Do not freeze
- Injection volume: 0.5 mL
- No diluent required
- Storage after puncture
 - Hold the vial between 2° to 25°C (36° to 77°F) for up to 6 hours
 - Discard the vial 6 hours after the first puncture
- EUA: [Novavax HCP Fact Sheet 07132022 \(fda.gov\)](#)

Novavax Label²



Receiving and Storing Novavax

Includes:

- Fact Sheet
- Vaccine Expiration Dates
- Critical Notifications
- Storage Unit Organization
- Error Reduction
- Instructions

Receiving & Storing Novavax Vaccine

California COVID-19 Vaccination Program



Upon delivery, sites assume responsibility for storing vaccines in temperature-controlled environments. Never reject vaccine shipments.

Novavax COVID-19 Vaccine, Adjuvanted | Fact Sheet

- Product (Vial NDC 80631-100-01) is available in 100-dose carton; adult ancillary kit ships within 24-48 hours of vaccine and includes PPE.
- Authorized under EUA as a **2-dose primary series** for ages 18Y+. Do not dilute.
- Vaccine contains SARS-CoV-2 spike protein and Matrix-M adjuvant; adjuvants are incorporated into some vaccines to enhance the immune response of the vaccinated individual ([read more](#)).
- Distribute [Fact Sheet for Recipients & Caregivers](#) prior to vaccination.
- Vaccine ships like other routine refrigerated temperatures between 2° to 8°C (36° to 46°F).
- Store unpunctured multi-dose vials in a refrigerator between 2° to 8°C (36° to 46°F) **until expiration**. Protect from light. **DO NOT FREEZE**.
- Hold punctured vials between 2° to 25°C (36° to 77°F) for up to **6 hours** then discard.
- Apply [storage and handling labels](#) to cartons to prevent administration and handling errors.
- Dispose of cooler and packing materials; there is no return option available for refrigerated shippers.
- CDC's Preparation & Administration Summary ([TBD](#)), [Storage & Handling Summary](#), and [Standing Orders](#).
- See CDC [COVID-19 Vaccine Product Guide](#) (details about vaccine, kits, dimensions, PPE & needles; to be updated for Novavax) or [CDPH chart](#).

Vaccine Expiration Dates

No expiration date is printed on vial or carton. To find expiration date by lot number, [check online](#). Do not use vaccine after the expiration.

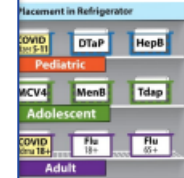
Do not dispose of vaccine without ensuring the expiration date has passed. As expiration dates draw near, check with the manufacturer for any extensions, or use CDC's [COVID-19 Vaccine Lot Number and Expiration Date Report](#). (This site requires you to [register](#) before accessing the information.) As expiration dates are extended, use CDC's [expiration date tracker](#) to record updated expiration dates.

Critical Notifications

Coordinators receive emails regarding order confirmations, advance shipment notices of vaccine and kits, and temperature monitoring alerts. Add [critical senders](#) to your contact list, or work with IT staff to have these senders added to your organization's email whitelist, to ensure emails are not filtered to Spam or Junk folders.

California COVID-19 Vaccination Program

IMM-1436 (7/25/22)



ks at top of cooler).

read the monitor.

o expired vaccine.

original packaging to

n and handling errors.

ature excursions in transit,

IMM-1436 (7/21/22)

Pfizer Pediatric 5 Years -11 Years Expiry

- Pfizer vaccines for ages 5 years -11 years currently being shipped have an expiry date of the end of September.
- Pfizer will not be shipping vaccines that have less than 30 days to expiry.
- Currently, there are no plans for a shelf-life extension in the immediate future.
 - If your Pfizer Pediatric 5 years -11 years expires, please discard it.
- CDPH will share more information, once received.



Pfizer Expiry Lookup Tool

- Pfizer expiry lookup tool released
- Website: lotexpiry.cvdvaccine.com

Pfizer-BioNTech COVID-19 Vaccine Expiry

To find the expiration date for the Pfizer-BioNTech COVID-19 vaccine lot number, enter the lot number found on the vial or the carton.

To ensure proper storage and handling, please see cvdvaccine.com.

United States of America

Special characters (commas, /, *, &) are not allowed in the Lot numbers

Transport of COVID-19 Vaccines

- Job Aid: [Transporting Vaccines](#)
- Ensure you are using a properly conditioned transport container and a digital data logger.
- Providers should ensure vaccine stayed within the temperature range during transport prior to using the vaccine.
- If using vaccine at off-site clinics, keep vials in the conditioned transport container until ready for use
 - Many manufacturers don't have data for excursions above ~85-90°F

Reporting & Missed Vaccination Opportunities & Wastage

Updated

Reporting Doses Spoiled, Expired, or Wasted



California COVID-19 Vaccination Program

Waste is expected and may be unavoidable in any vaccination program. Wastage reporting helps CDC better understand how much inventory is in the field and where the greatest needs for inventory exist to minimize the potential waste of vaccine. Follow [CDC's Toolkit](#) and [CDC summary guidance](#) to maximize vaccination opportunities while minimizing waste.

Key Points

- Remove spoiled, expired, or wasted vaccines from the storage unit immediately
- Do not return nonviable vaccines to the manufacturer or McKesson
- Report nonviable doses in myCAvax before disposal
- Follow these instructions to report nonviable doses and dispose of vaccines

Program Requirements

- Enrolled providers must document and track vaccine wastage as part of routine vaccine inventory management activities and report the number of doses of COVID-19 vaccine and adjuvants that were unused, spoiled, expired, or wasted as required by the relevant jurisdiction.

Reporting Requirements

Login to myCAvax and click **Vaccine Inventory – Waste** to report spoiled, expired, or wasted vaccines before disposing of vaccines. Include product, lot number, and expiration date.

Spoiled Vaccines

Consistent and accurate temperature monitoring should minimize spoiled vaccines. Vaccines are considered spoiled if manufacturers determine vaccines were exposed to out-of-range temperatures and may not be used. If the vaccine is determined to be non-viable, vaccine must be reported as “spoiled” and properly disposed of. Vaccines could spoil as a result of the following conditions:

- data logger indicates that storage unit temperatures are out of the recommended range
- storage unit temperatures are not monitored
- failure to store vaccines properly upon receipt
- vaccines spoiled during transfer
- natural disaster, power outage, or mechanical failure

California COVID-19 Vaccination Program

IMM-1347 (7/21/22)

Updated

Missed Vaccination Opportunities & Wastage



California COVID-19 Vaccination Program

Never miss a vaccination opportunity because of fear of vaccine wastage! Do your best to follow clinical and inventory management best practices for vaccination to maximize vaccinations and minimize dose wastage where possible.

Key Points

Vaccine wastage is expected, may be unavoidable, and will even increase as vaccine rollout continues because

- more providers, including smaller provider sites, are now receiving vaccine;
- vaccine continues to be available only as multi-dose vials; and
- vials must often be punctured without using the full number of doses printed on the label.

Never Miss a Vaccination Opportunity

[CDC Guidance](#): Vaccinate every eligible person who presents at a vaccination site—even if it means puncturing a vial at the end of the day.

Several studies have shown eliminating missed opportunities could increase vaccination coverage by up to 20% ([Pink Book](#), [“System-Based Barriers”](#)). Follow these tips:

- Vaccinate family members or friends who accompany patients to medical visits even if they are not established patients at the vaccinating practice.
- Continue [outreach to employers or other community partners](#) that have a large membership or network to arrange vaccination events for primary or booster doses.
- Follow both clinical and inventory management best practices for vaccination to maximize vaccination and minimize dose wastage.

Punctured vials must be used within:

12 hours

- Pfizer 6M-4Y (maroon cap), Pfizer 5-11Y (orange cap) and Pfizer 12Y+ (gray cap)
- All Moderna COVID-19 products

6 hours

- Pfizer (12Y+ purple cap)
- Janssen/J&J (must be 2-8 degrees Celsius)
- Novavax

2 hours

- Janssen/J&J (at room temperature)

Tips to Reduce Wastage

- Follow guidance in [CDC Toolkit](#) and [CDC summarized guidance](#) to reduce waste in COVID-19 vaccine storage, transport, handling, and administration in accordance with the CDC and manufacturer's guidance.
- If there are a substantial number of expiring vials, contact your local health department and other partners to discuss redistribution of vaccine to areas of need.
- Work with your local health department in advance to determine thresholds for the number of vials in danger of being wasted that would trigger a call for guidance.
- Make every effort to coordinate the number of vials needed with the anticipated number of patients when preparing for daily clinics to help reduce over-thawing of vaccine.

California COVID-19 Vaccination Program

IMM-1379 (7/20/22)



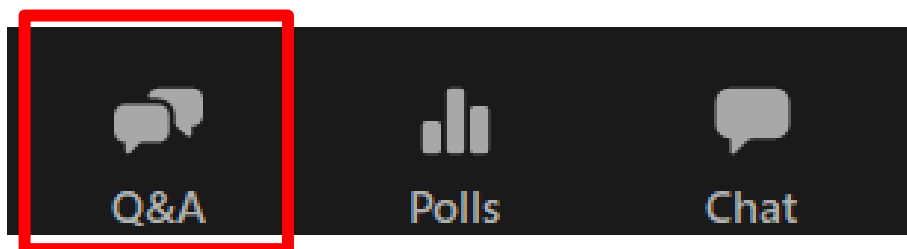
Vaccinate
ALL 58

Job Aid: [Reporting Doses Spoiled, Expired, Wasted](#)

Job Aid: [Missing Vaccination Opportunities & Wastage](#) 57

Provider Office Hours Q&A

During today's session, please use the Q&A panel to ask your questions so our subject matter experts can respond directly.



Vaccine Management

Eric Norton, My Turn, and Maria Volk, CDPH

★ Monkeypox Vaccine & the My Turn Outbreaks Approach



With increased interest in expanding My Turn beyond COVID-19 and flu to create a solution for disease outbreaks happening across CA, and especially with Monkeypox being a recent driver for this expansion, we are evaluating the development of an outbreak approach.

Initial Monkeypox functionality will launch in My Turn on August 15th.

★ Novavax Update



The My Turn team is prioritizing the launch of My Turn Outbreaks and will switch focus to adding Novavax to the system after the Monkeypox functionality is released.

We expect Novavax to be available in My Turn starting in late August.

★ Get Ready for My Turn Release 29!

New updates for My Turn Public Clinic launched July 27th.



Public

- ✓ Removing flu – zero out flu vaccine supplies to remove nasal spray and flu shot tags
- ✓ In-home vaccination and transportation page updates to reflect guidance for under 5 patients
- ✓ [Delivery] Update error messaging for better user experience and accessibility
- ✓ [Continued] Failure Point Notification – setting up monitoring tools throughout system to flag (potential) issues

Clinic

- ✓ [SMS/Email] Opt-out on the Walk-In flow
- ✓ [Vaccine Inventory] Entering Lot Numbers correctly
- ✓ [CAIR2] Concatenate "Cross Street 1" and "Cross Street 2"

★ COVID-19 Interactive Eligibility Chart



Everyone aged 6 months and older is eligible for the primary series of a COVID-19 vaccine.

Booster and Additional doses are available to eligible patients who have completed a primary series of COVID-19 vaccine. Specific COVID-19 vaccine brands and doses have different timing requirements.

My Turn Public is launching an Interactive Eligibility Chart so that patients can see a quick view of their options.

COVID-19 vaccine eligibility

Enter your age years

	Pfizer	Moderna	Johnson & Johnson
Primary	Yes 3 dose series	Yes 2 dose series	No
Additional For immunocompromised	Yes After 28 days	No	No

NOTE: Booster and Additional doses are available to eligible patients who have completed a primary series of a COVID-19 vaccine. For Pfizer and Moderna, the primary series is two doses, and for Johnson & Johnson it's a single dose. Some patients benefit from receiving a 2nd dose 8 weeks after the 1st dose, however, all patients must wait at least 20 days (Pfizer) or 27 days (Moderna).

Other factors may impact eligibility, please talk to your provider.

★ Vaccine Inventory Tooltip Update: Entering Lot Numbers

When editing or creating a new vaccine inventory record, only enter **up to 10 alphanumeric characters including dashes** in the **Lot** field on the New Vaccine Inventory screen. *A space is not considered a valid character.*



myCAvax
California Vaccine Management System

Home Clinics Vaccine Inventory Appointments Add Walk-In Appointment Bulk Walk-In Upload More

Need Help? Please see the Clinic Manager

Vaccine Inventory
Recently Viewed

3 Items • Updated 18 hours ago

	Asset Name	Brand
1	Moderna (6-11) - B1234	Mo
2	Moderna (6-11) - A1234	Mo
3	Infant/Toddler Moderna - C1...	Mo
4	Infant/Toddler Moderna - B1...	Mo
5	Infant/Toddler Moderna	Mo
6	Moderna - A1234	Moderna

New Vaccine Inventory: New Vaccine

Asset Information

*Asset Name Status

*Vaccine Type *Account

View all dependencies

*Brand *Lot

View all dependencies

Presentation *Expiration Date

Cancel Save & New Save

Enter up to 10 characters, including dashes. (xxx-12489)

★ Novavax Ordering



- Providers can order Novavax in myCAvax!
- The minimum Standard Order is 100 doses.
- Providers can opt out of ancillary kits.
- LHJs that offer local redistribution will be opening up for small orders as they receive product.

Ordering & Distribution Cadence Calendar

California COVID-19 Vaccination Program



Ancillary kits for all products will arrive within 24-48 hours of vaccine delivery and **may arrive before vaccines**.

For Providers

Week 1

Week 2

Monday	Tuesday	Wednesday	Thursday	Friday	Monday	Tuesday	Wednesday	Thursday	Friday
Provider Order (submit by 5pm) 					Pfizer-Standard				
				Moderna/J&J/Novavax-Standard					
				TPR-Pfizer		TPR-Pfizer			
		Limited Catch-Up Orders* (submit by 5pm) 					Pfizer-Standard		
						Moderna/J&J/Novavax-Standard			
						TPR-Pfizer			



Delivery windows are dependent on provider's days/hours of operation. Once submitted, orders cannot be cancelled.

Watch for emails regarding order confirmations, advance shipment notices of vaccine and ancillary kits, and temperature monitoring alerts. Add [list of senders](#) to your contacts or work with your IT staff to ensure emails are not filtered to Spam or Junk folders.

* Catch-up opportunity for urgent orders on Wednesday if Monday deadline is missed.

California COVID-19 Vaccination Program

IMM-1360 (7/27/22)

APPENDIX

myCAvax – Known Issues - *Updated 7/22*

Known Issues

Small Order Fulfillment Method Blank?




- ✓ We are working to correct an issue where the 'Fulfillment Method' is not correctly defaulting based on a product's small order/TPR availability and the LHD's small order product settings
 - ✓ If the product is eligible for TPR orders but your LHD is not offering fulfillment locally, the 'Fulfillment Method' for the small order should default to 'Redistributor'
 - ✓ If the product is NOT eligible for TPR orders but your LHD is offering fulfillment locally, the 'Fulfillment Method' for the small order should default to 'Local'
 - ✓ If the product is eligible for TPR orders and your LHD is offering fulfillment locally, the 'Fulfillment Method' for the small order should default to 'Local'



Workaround/Next Steps

- ✓ Fix: 8/11/2022
- ✓ No Workaround. Your LHD will handle the fulfillment method at the time of the order's review

Slide Icon Key

Icon	Meaning
	This is to label slides that are referencing upcoming or existing functionality and how to use it in the system.
	This is to label slides that include important system reminders.
	This is to label slides that include tips and best practices to improve your system experience.

Release Roadmap

RECENTLY DEPLOYED

July 14th (R28.0)

Orders

- ✓ Order Fulfillment Updates to allow multiple lots and general UI enhancements
- ✓ Allow LHD users update additional details on the Shipment Records (i.e., quantity, product, expiration date, etc.)
- ✓ Validate Shipping Hours
- ✓ Set Flags for Temporary Closure on Vaccine Order Review page

Account

- ✓ Temporary Closure for Location Accounts
- ✓ Add Calibration Expiration date to Storage Unit List

Community

- ✓ Update Thermometer Type options
- ✓ Add Data Logger as Shipment Incident Type

Site Visits

- ✓ Provider Category
- ✓ VFC Assigned Pin

Other

- ✓ Put LHD Dashboard on LHD Homepage

IN PROGRESS

August 11th (R29.0)

Orders

- ✓ Monkeypox ordering

Account

- ✓ Provider initiated Disenrollment
- ✓ Disenrollment due to inactivity

Site Visits

- ✓ Update Users who are Recipients in Site Visit Confirmation Email Notifications

Other

- ✓ Add 'Shipment Incident' as a new status reason for Order Holds on an account

UPCOMING

September 8th (R30.0)

Account

- ✓ Smarty Street Enhancements: Address validation on existing accounts

Community

- ✓ Unified Login Experience

Site Visits

- ✓ Follow Up Actions

My Turn Public Product Roadmap

RECENTLY DEPLOYED

July 7th (R28.4)

Release 28.4

- ✓ Moderna Pediatric 6-years-11-years two dose series
- ✓ Moderna Adolescent 12-years-17-years two dose series
- ✓ In-home vaccination and transportation page updates to reflect guidance for under 5 patients
- ✓ [Continued] Failure Point Notification – setting up monitoring tools throughout system to flag (potential) issues
- ✓ [Continued] Analysis – Consider walk-in and bulk upload appointments for clinic's Public Portal capacity and availability

CURRENT

July 27th (R29)

Release 29

- ✓ Moderna Pediatric/Adolescent 6-17 Additional Dose rollout
- ✓ Translations refresh
- ✓ Update eligibility chart to CDC link
- ✓ Display number of locations on Select a Location page
- ✓ Pfizer Infant/toddler (6 months - 4 years) second dose reminder communications
- ✓ [Testing] Custom flows for vaccine type
- ✓ [Delivery] Failure Point Notification – setting up monitoring tools throughout system to flag (potential) issues
- ✓ [Testing] Consider walk-in and bulk upload appointments for clinic's Public Portal capacity and availability

UPCOMING

August 24th (R30)

Release 30

- ✓ SMS opt in
- ✓ [Testing] Custom flows for vaccine type
- ✓ [Delivery] Update error messaging for better user experience and accessibility
- ✓ [Continued] Failure Point Notification – setting up monitoring tools throughout system to flag (potential) issues
- ✓ [Testing] Consider walk-in and bulk upload appointments for clinic's Public Portal capacity and availability

My Turn Clinic Product Roadmap

RECENTLY DEPLOYED

July 7th (R28)

Release 28.4

- ✓ Moderna Pediatric 6-years-11-years two dose series
- ✓ Moderna Adolescent 12-years-17-years two dose series
- ✓ Add Vaccine Supply & Inventory
- ✓ Bulk Walk-In Upload
- ✓ Clinic Creation Setup
- ✓ Walk-in Flow Update
- ✓ Vaccine Administrator Flow Update
- ✓ Single/Bulk Update
- ✓ Appointment/IIS Tab Filter Update
- ✓ Dashboard Homepage Update

Release 29

- ✓ [Walk-In] Adding tool tips to the Homeless questions
- ✓ [Vaccine Inventory] Entering Lot Numbers correctly
- ✓ [CAIR2] Concatenate "Cross Street 1" and "Cross Street 2"
- ✓ [Clinic Creation] Infant/toddler Pfizer (6m-4yrs) checkbox visible
- ✓ [IIS Tab] Update filters to mimic the Appointment tab Filters
- ✓ Moderna 6m-17years Additional Dose
 - ✓ Walk-In flow
 - ✓ Vaccine Administration flow
 - ✓ Single/Bulk Edit update
 - ✓ Clinic Creation Setup
 - ✓ Vaccine Supply & Inventory
 - ✓ Bulk Walk-In Upload
 - ✓ Appointment/IIS Tab Filters

CURRENT

July 27th (R29)

UPCOMING

August 24th (R30)

Release 30

- ★ ✓ [SMS/Email] Opt-out on the Walk-In flow
- ✓ [Walk-In Flow] Make the second Homelessness question optional
- ✓ Monkey Pox Flow
 - ✓ Clinic Creation Setup
 - ✓ Walk-In flow
 - ✓ Vaccine Supply & Inventory
 - ✓ Appointment/IIS tab filters
 - ✓ Vaccine Administration flow
 - ✓ Single Edit

Wrap-up

Leslie Amani, CDPH

Additional Support

Type of Support

Description

Updated 6.6.22



COVID-19 Provider Call Center

The COVID-19 Call Center for Providers and Local Health Departments is dedicated to medical providers in California and their COVID-19 response, specifically addressing questions about State program requirements, enrollment, and vaccine distribution, including the Vaccine Marketplace.

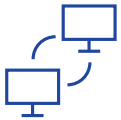
- Email: covidcallcenter@cdph.ca.gov
- Phone: (833) 502-1245, Monday through Friday from 8AM–6PM



Enrollment Support

For Provider enrollment support, please contact myCAvax Clinic Operations at

- Email: myCAvaxinfo@cdph.ca.gov

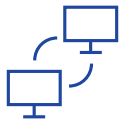


myCAvax Help Desk

Dedicated staff provide up-to-date information and technical support on the myCAvax system.

- Email: myCAvax.HD@Accenture.com
- Phone: (833)-502-1245, option 3, Monday through Friday 8AM–6PM

For training opportunities: <https://eziz.org/covid/education/>

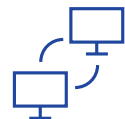


My Turn Clinic Help Desk

For **onboarding support** (those in the process of onboarding): myturnonboarding@cdph.ca.gov

For **technical support** with My Turn Clinic for COVID-19 and flu vaccines: MyTurn.Clinic.HD@Accenture.com or (833) 502-1245, option 4: Monday through Friday 8AM–6PM

For job aids, demos, and training opportunities: flu at <https://eziz.org/covid/myturn/flu/> and COVID at <https://eziz.org/covid/myturn/>



Archived Communications

For archived communications from the COVID-19 Provider Call Center about the California COVID-19 Vaccination Program visit

- Website: [EZIZ Archived Communications](#)

Latest Updates



COVID-19 Vaccines Approved for Children as Young as 6 Months

[Get the Facts](#)



Pfizer Gets Approval for Booster Ages 5-11

[Learn More](#)



Daily CDPH News Release

[Read the Latest](#)



Test to Treat Program

[Learn More](#)



Producing Safe and SMART Events

[See the Playbook](#)



Updated Masking Guidance

[See the Latest](#)

Quick Tips for Fighting COVID-19



Tested Positive?

Stay home, self-isolate and watch for symptoms if you test positive for COVID-19.

[Get Instructions](#)



Recently Exposed?

Wear a well-fitting mask around others, and follow quarantine and testing recommendations.

[See Instructions](#)



When to Mask

Find out when and where you may still need to wear a mask.

[See the Latest](#)



Choosing Your Mask

An effective mask has both good fit and filtration, and can help prevent you and others from getting COVID-19.

[Learn More](#)



Travel Tips

Get all the information you need before you take your next trip.

[See CDC Guidelines](#)

Protect Your Health



Protect & Prevent

Get all the information you need to protect yourself and others from COVID-19.

[Slow the Spread](#)



Testing

Get the latest on who should get tested and where.

[Get Tested](#)



Contact Tracing

What to expect if you are notified by a contact tracer that you've been exposed to COVID-19.

[Learn About Contact Tracing](#)



COVID-19 Vaccines

Schedule an appointment to get vaccinated if you're age 5+.

[Learn About Vaccines](#)



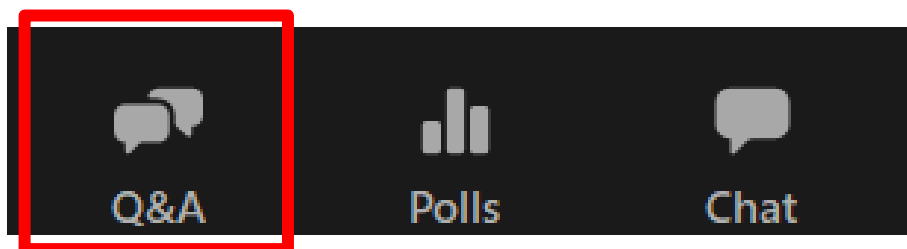
COVID-19 Treatments

Learn how treatments could help you recover faster or protect you from getting COVID-19.

[Learn About Treatments](#)

Provider Office Hours Q&A

During today's session, please use the Q&A panel to ask your questions so our subject matter experts can respond directly.



Thank you!



Monday

Provider Therapeutics Webinar

Next session: Monday August 1, 12PM

My Turn and myCAvax Office Hours

Next session: Monday, August 8, 12PM

Friday

Provider Office Hours

Next session: Friday, August 5, 9AM