

Long-Term Care Facility (LTCF)

COVID-19 Vaccine Toolkit

The **LTCF COVID-19 Vaccine Toolkit** has been developed as a resource to ensure that Long-Term Care (LTC) residents and staff have continued access to primary series and booster doses of COVID-19 vaccine. The following are vaccine access options, vaccination resources, and staff and resident education resources.

- LTCFs are encouraged to reach out to their regular or contract pharmacy to inquire about meeting the facility's ongoing needs of COVID-19 vaccination, including on-site clinics.
- LTC residents and staff who can travel to a vaccine site are encouraged to utilize vaccination sites in their local community (i.e., nearby pharmacies or healthcare provider offices); this may be the fastest way to get vaccinated.
- If an on-site vaccination clinic is the best option to meet your LTC residents' needs, facilities can contact LTC or retail pharmacies directly for support. When planning, LTCFs should take into consideration how many residents and staff will need primary and booster vaccines.
- Consider planning coadministration of both flu and COVID-19 vaccine at the same time. COVID-19 vaccines can be administered at the same time as flu and other vaccines.
- **Please take a moment to walk through the flow diagram in Appendix A for step-by-step instructions.**

Long-Term Care Pharmacies

- If you do not have a contracted pharmacy provider, there are participating Long-Term Care (LTC) pharmacies that may be available to service your facility's COVID-19 vaccine needs. Facilities can reach out directly to a nearby LTC pharmacy of their choice to inquire and receive COVID-19 vaccine. Note that while some pharmacies are only serving contracted facilities, others are willing to service outside their usual contracted facilities. The timing and availability for vaccine service will vary based on the pharmacy resources and facility location.
- A list of the participating LTC pharmacies in California can be found in **Appendix B**.
 - **Additional information about Omnicare**
 - **Distribution model** – subcontract arrangement with the facilities to distribute vaccine and utilize facility staff to do the vaccine administration. LTCFs can request vials of COVID-19 vaccine and Omnicare would manage the delivery logistics and vaccination reporting. Facilities should only order what vaccine they can



administer, report back on within same day of receipt, and return any unused/expired doses to Omnicare. If you are currently a network customer and are interested in utilizing the distribution process, please contact your Account Manager for more information.

- **Ambulatory model** – residents and staff of LTCFs can call 1-877-652-0918 (Monday – Friday 6AM – 3PM), a support line dedicated to assist LTCF residents and staff to schedule an in-store COVID-19 vaccine appointment at a nearby CVS location.
 - **On-site clinic model** – full service on-site vaccine clinics are available via a CVS pharmacy-led clinic model. Current criteria are a minimum of 30 immunizations per clinic and a location must be within 30 miles of a CVS pharmacy.
 - [Omnicare Vaccination Clinics](#)
 - If you are currently a customer with Omnicare, we encourage that you continue to work with Omnicare for your continued COVID-19 vaccine needs.
- **Additional information about Pharmerica**
 - **Distribution model** – subcontract arrangement with the facilities to distribute vaccine and utilize facility staff to do the vaccine administration. Pharmerica would manage the delivery logistics and all of the vaccination reporting.
 - **On-site clinic model** - a full service of on-site vaccine clinics including delivering of vaccine, administration, and reporting. Facilities may directly contact immunizeLTC@pharmerica.com
 - If you are currently a customer with Pharmerica, we encourage that you continue to work with Pharmerica for your continued COVID-19 vaccine needs.

Community Resources for Appointments

- LTC staff and residents who are mobile should seek vaccine from community resources including pharmacies, healthcare providers and local health department clinics; this would be the fastest and easiest way to get vaccinated. There are multiple online resources to locate and schedule an appointment:
 - **My Turn**
 - Visit myturn.ca.gov or please call the CA COVID-19 Hotline at 1-833-422-4255 (M-F 8AM-8PM, Sat-Sun 8AM-5PM) for assistance
 - **Vaccine Finder**
 - Visit <http://www.vaccines.gov/> to find vaccines near you

- **Retail Pharmacies**
 - [CVS](#)
 - [Walgreens](#)
 - [Rite Aid](#)
 - [Albertsons](#)
 - [Walmart](#)
 - [Save Mart](#)
 - [Costco](#) (Costco membership is not required)
 - [Health Mart](#)
- **Health Systems** - Health systems are servicing both members and non-members
 - [Kaiser Permanente](#)
 - [Sutter Health](#)
 - [UC Davis Health](#)

On-site Vaccine Clinics from Retail Pharmacies

- Many retail pharmacies also offer on-site vaccine clinics (COVID and non-COVID vaccines) if certain requirements are met; interested facilities can reach out to pharmacies directly to inquire an on-site vaccine clinic. Note that timing and availability of on-site clinics will vary based on facility details and pharmacy resources. Also note that flu vaccine and COVID-19 vaccine can be co-administered when planning these clinics. The links and contact information below cover how to request a vaccine clinic:
- **CVS**
 - Inquiries and questions for clinics? Email VaccineClinics@CVSHealth.com
 - cvshealth.com/covid-19/return-ready/vaccination/core
 - A minimum of 25 doses is required per clinic
 - All locations must be within 75 miles of a local CVS Pharmacy
- **Walgreens**
 - LTCF COVID-19 Booster Vaccination Program: [COVID-19 LTCF Booster Clinic Interest Form](#)
 - One-time on-site vaccination clinic to LTCFs with 15 or more beds
 - For non-booster vaccine: <https://wagsoutreach.com/COVID-Contact-Us>
 - A minimum of 50 doses (may include a combination of COVID and flu vaccine) is required per clinic
- **Rite Aid**
 - www.riteaid.com/covid-19/community-clinics
 - A minimum of 25 participants is required per clinic
 - Must be located in a community served by Rite Aid
- **Albertsons**
 - www.albertsons.com/pharmacy/enterprise-solutions.html
 - For **NorCal**, submit request to janet.luo@safeway.com.
 - For **SoCal**, submit request to chi.nguyen4@albertsons.com
 - A minimum of 25 participants is required per clinic
- **Kroger/Ralph's**
 - Submit request to linh.lee@ralphs.com

- **Walmart**
 - For inquiries or requests for clinics please fill out this form: [Walmart COVID-19 Vaccine Interest Survey](#)
- **Topco (Raley's, Save Mart)**
 - Submit request to fzaidi@topco.com
- **Costco**
 - Submit request to betharnold@costco.com and rdant@costco.com
 - A minimum of 40 participants is required per clinic
- **Health Mart (independent pharmacies)**
 - For inquiries or requests for clinics please fill out this form: [Health Mart COVID-19 Community Vaccine Clinic Interest Form](#)

Being a COVID-19 Vaccine Provider

- For LTCFs with the ability to accept, store, administer and report COVID-19 vaccine administration data, you are encouraged to enroll with the state to become a COVID-19 vaccine provider. You can both enroll and sign the CDC COVID-19 Vaccination Provider Agreement through **myCAVax**. LTCFs in myCAVax can directly receive and administer COVID-19 vaccine to their residents and staff.
- We strongly recommend reviewing these documents to determine your facility's eligibility and before enrolling as a provider:
 - [Enrollment Kit](#)
 - [Provider Enrollment Worksheet](#)
 - [Storage Guideline](#)
 - [myCAVax Training](#)
- Ensure that all vaccination locations are registered and able to submit vaccination administration data to the California Immunization Registry (CAIR). Enroll in CAIR if you have an electronic health record (EHR). If you need help, email CAIRDataExchange@cdph.ca.gov. Otherwise contact your [Local CAIR Representative](#).
- Make sure your facility's designated staff first starts the enrollment process as an Organization Coordinator to complete Section A of the CDC Provider Agreement in myCAVax. Location Coordinators of all the locations which will be administering vaccines then complete Section B of the CDC Provider Agreement in myCAVax.
 - [Enrolling Provider Organizations](#)
 - [Enrolling Provider Locations](#)
- Make sure to check these resources after enrollment:
 - [Welcome Kit](#)
 - [Readiness Checklist: Quick Start Guide](#)
 - [What to Expect After Enrollment](#)
- If you need assistance with any of the process or have any questions, contact:
 - COVID Call Center for enrollment issues
 - Email: COVIDCallCenter@cdph.ca.gov
 - Phone: (833) 502-1245 Mon-Fri 8am-6pm
 - myCAVax Help Desk for technical issues

- Email: myCAvax.HD@accenture.com
- Phone: (833) 522-1245 option 2

Local Health Department (LHD) Resources

- If you are having difficulties arranging COVID-19 vaccination with the pharmacies or other vaccine providers, please reach out to your LHD for assistance. There are LHDs who may have local resources (i.e. mobile strike team, in-home vaccination service, transportation service) available to assist LTCFs.
 - [Local Health Department Immunization Program Contact](#)
 - [Local Health Department's Website](#)

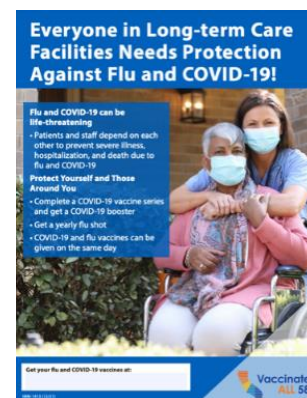
State Resources

- Transportation services
 - [My Turn](#) currently offers transportation services to and from COVID-19 vaccination sites. If a person needs transportation services, they can contact the California COVID-19 Hotline at 1.833.422.4255 M-F 8AM-8PM, Sa-Su 8AM-5PM.
- If facilities still have difficulties and are unable to arrange COVID-19 vaccination from any of the above resources, please contact the state call center for support:
 - Provider COVID-19 Call Center
 - Email: covidcallcenter@cdph.ca.gov
 - Phone: (833) 502-1245 Monday – Friday from 8 AM–6 PM

Staff and Resident Education Resources

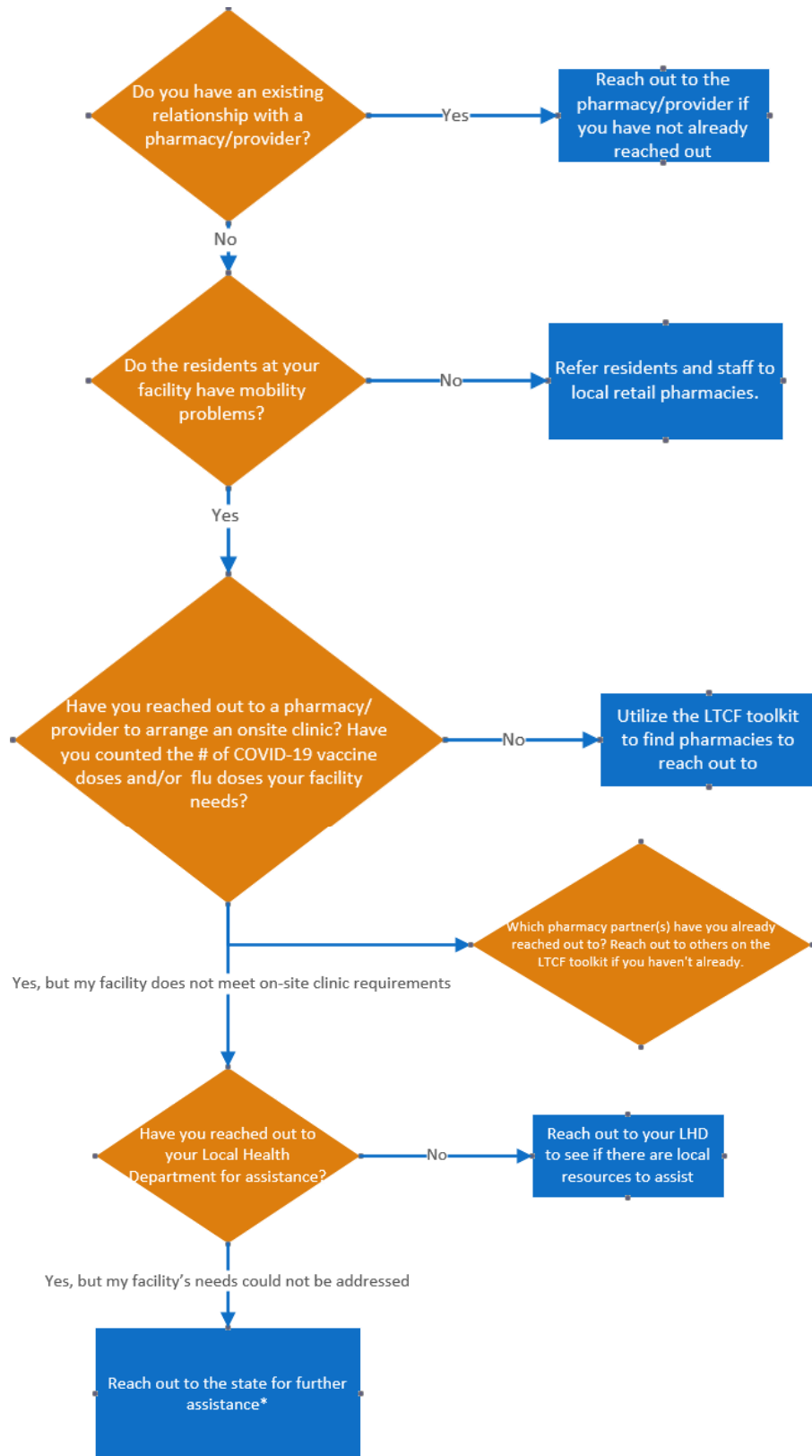
Share the following resources with residents and staff to provide clear and accurate information about COVID-19 vaccines, to raise awareness about the benefits of vaccinations, and to address common questions and concerns about COVID-19 vaccines.

- [Vaccine Guidance and Education Resources for LTCFs](#)
- [If You Work in a Health Care Setting, Boost Your Health with a COVID-19 Booster Dose](#) poster | [Spanish](#) | [Tagalog](#)
- [Everyone Could Use a Boost](#) poster for older adults | [Spanish](#)
- [Give Your Immunity a Boost](#) infographics for healthcare workers
- [Everyone in LTC Needs Protection Against COVID-19 and Influenza](#) poster | [Spanish](#) | [Tagalog](#) | [Chinese](#)
- [COVID-19 Information for LTC Residents and Family Members](#) (CDC)
- [Myths and Facts about the COVID-19 Vaccine](#) webpage (CDC): Chinese, English, Korean, Spanish, Vietnamese, and other languages



Appendix A.

LTCF: Who do I contact to get access to COVID-19 vaccine?



* If your facility is unable to arrange COVID-19 vaccination from any of the above resources, please contact the state Provider COVID-19 Call Center: email covidcallcenter@cdph.ca.gov or call (833) 502-1245 Monday – Friday 8 AM–6 PM

Appendix B: Long-Term Care Pharmacies by County

Some pharmacies may serve facilities in different counties.

COUNTY	CITY	PARTNER	PHARMACY NAME	PHONE	EMAIL
ALAMEDA	CASTRO VALLEY	Cardinal/ MedShoppe	CLAYWORTH HEALTHCARE PHARMACY	510-537-9402	
ALAMEDA	FREMONT	MHA	HALLERS LTC INC	510-793-5096	aarondeep@hallsrx.com
ALAMEDA	HAYWARD	MHA	SNP PHARMACY LLC	888-801-2224	vaccines@snp-rx.com; raffaella.meyer@snp-rx.com
ALAMEDA	HAYWARD	Omnicare	OCR OF HAYWARD		Monica.Scheu@omnicare.com
ALAMEDA	UNION CITY	Innovatix	PHARMERICA		ImmunizeLTC@pharmerica.com
CONTRA COSTA	RICHMOND	MHA	CAREZONE PHARMACY	510-227-8104	joanna@860pharmacy.com
CONTRA COSTA	SAN RAMON	MHA	PREMIER PHARMACY	925-556-9680	PHARMACY.PREMIER@YAHOO.COM
FRESNO	FRESNO	Innovatix	PHARMERICA		ImmunizeLTC@pharmerica.com
FRESNO	FRESNO	MHA	ALIXA RX	559-277-4107	(Parham.Bazrafshan@alixarx.com
FRESNO	KINGSBURG	MHA	MODEL DRUG INC.	559-897-5111	natalie@modeldrug.com
HUMBOLDT	EUREKA	MHA	CLONEY'S PHARMACY INC.	707-443-1614	bcoleman@cloneys.com
KERN	BAKERSFIELD	Cardinal/ MedShoppe	ZOHA'S PHARMACY	661-322-7979	zohasrx2@gmail.com
KERN	BAKERSFIELD	Cardinal/ MedShoppe	ZOHA'S PHARMACY	661-293-7979	zohasrx2@gmail.com
KERN	BAKERSFIELD	MHA	RX PHARMACY	661-489-5309	rxpharmacyinc1@gmail.com
KERN	RIDGECREST	Cardinal/ MedShoppe	CENTER PROFESSIONAL PHARMACY	760-446-4141	
LOS ANGELES	ALHAMBRA	MHA	VERDUGO PLAZA PHARMACY ALHAMBRA	626-281-3799	vppltc@aol.com
LOS ANGELES	ARTESIA	Gerimed	KOAM PHARMACY INC (BOTH LTC AND RETAIL)	562-402-3636	koampharmacy@gmail.com; ows@gerimedgso.com
LOS ANGELES	ARTESIA	Cardinal/ MedShoppe	THE MEDICINE SHOPPE PHARMACY	562-402-1000	msartesia.mercyrxgroup@gmail.com
LOS ANGELES	ARTESIA	MHA	RX CONSULTANTS GROUP INC	562-402-0542	jean.ly@mercy-pharmacy.com
LOS ANGELES	BALDWIN PARK	Gerimed	GOOD HEALTH INC PREMIER PHARMACY (CLOSED-DOOR PHARMACY)	626-626-9400	vaccines@premierpharmacy.com; ows@gerimedgso.com
LOS ANGELES	BELL	Cardinal/ MedShoppe	AMERICAN HOME PHARMACY	323-562-1578	
LOS ANGELES	CANOGA PARK	Omnicare	OCR OF SO. CA		Michelle.Faraon@omnicare.com
LOS ANGELES	CERRITOS	Omnicare	OCR OF CERRITOS		Raymundo.Perez@omnicare.com
LOS ANGELES	CITY OF INDUSTRY	MHA	SNP PHARMACY LLC	626-820-5800	vaccines@snp-rx.com; raffaella.meyer@snp-rx.com
LOS ANGELES	COVINA	MHA	MED-PLUS PHARMACY LTC	866-463-3757	s.hasan@medplusltc.com
LOS ANGELES	COVINA	MHA	OWL WESTERN PHARMACY	626-209-8160	johnfawad@gmail.com
LOS ANGELES	DUARTE	Cardinal/ MedShoppe	PAX PHARMACY	626-357-8500	dahermrx@gmail.com

LOS ANGELES	INGLEWOOD	MHA	SPECIALIST MEDICAL PHARMACY	310-674-4432	specialistmedicalpharmacy@gmail.com
LOS ANGELES	LOS ANGELES	Cardinal/ MedShoppe	ECHO PARK PHARMACY	213-341-1411	echoparkpharmacy@gmail.com
LOS ANGELES	LOS ANGELES	Cardinal/ MedShoppe	FLORENCE PHARMACY & MEDICAL SUPPLY	323-277-9500	info@mercy-pharmacy.com
LOS ANGELES	LOS ANGELES	Cardinal/ MedShoppe	WOORI PHARMACY	213-384-6323	wooripharmacla@gmail.com; angel.sang.lee@gmail.com
LOS ANGELES	LOS ANGELES	MHA	DABNEY'S PHARMACY	323-757-3111	dabneyspharm@yahoo.com
LOS ANGELES	MONTEREY PARK	MHA	HYGEA LTC PHARMACY	323-263-4903	Hygeialtc@gmail.com
LOS ANGELES	NORTH HOLLYWOOD	MHA	SCRIPTS	818-765-1234	AGREENBERG@SCRIPTS-RX.COM
LOS ANGELES	NORTHRIDGE	Cardinal/ MedShoppe	MARKET PHARMACY LTC	818-349-9795	md4rx@aol.com
LOS ANGELES	NORTHRIDGE	MHA	MARKET PHARMACY	818-349-9795	MD4RX@AOL.COM
LOS ANGELES	POMONA	MHA	PHILLIPS RANCH PHARMACY / SJC MANAGEMENT	909-868-7363	EVANS.JOANNE@VERIZON.NET
LOS ANGELES	RESEDA	MHA	JOYCE EISENBERG KEEFER MED CTR PH	818-654-5521	aida.oganesyan@jha.org
LOS ANGELES	SANTA FE SPRINGS	MHA	GENOA HEALTHCARE LLC	562-222-8049	tpatel@genoahealthcare.com; vaccine@genoahealthcare.com
LOS ANGELES	TORRANCE	Cardinal/ MedShoppe	GREEN PHARMACY	310-504-0600	
LOS ANGELES	TORRANCE	MHA	TORRANCE PHARMACY INC	424-250-1701	ben@mytorrancepharmacy.com
LOS ANGELES	VAN NUYS	MHA	STAR PHARMACY	818-304-0881	FRED@STARLTCRX.COM
MARIN	NOVATO	Cardinal/ MedShoppe	GOLDEN GATE PHARMACY	415-455-9042	pharmacist@ggprx.com
MERCED	LIVINGSTON	MHA	GKNRX INC	209-398-2035	GKNRXINC@GMAIL.COM
MONTEREY	SALINAS	MHA	ALISAL PHARMACIES INC	831-759-8184	paulko@hallsrx.com
ORANGE	ANAHEIM	Innovatix	*PHARMERICA - SOUTHERN CA PHARMACYALTERNATIVES		ImmunizeLTC@pharmerica.com
ORANGE	ANAHEIM	Innovatix	ALLIANCE PHARMACY, INC	657-200-8054	billing@alliancerx.us
ORANGE	ANAHEIM	Cardinal/ MedShoppe	ALPHA DRUGS	714-220-0373	
ORANGE	ANAHEIM	Cardinal/ MedShoppe	RX PLUS PHARMACY	714-776-1020	rxpluspharmacy@gmail.com
ORANGE	ANAHEIM	MHA	GUARDIAN PHARMACY SERVICES	714-220-0720	krishna.patel@guardianpharmacy.net; cvrs@guardianpharmacy.net
ORANGE	ANAHEIM	MHA	YORBA LINDA PHARMACY	714-993-1458	ltxcfax@gmail.com
ORANGE	CYPRESS	Innovatix	PHARMERICA		ImmunizeLTC@pharmerica.com
ORANGE	FOUNTAIN VALLEY	Cardinal/ MedShoppe	ACTIVE CARE PHARMACY	714-733-7930	
ORANGE	FOUNTAIN VALLEY	Cardinal/ MedShoppe	XPRESS MED PHARMACY INC.	888-334-0918	info@xpressmedrx.com

ORANGE	FOUNTAIN VALLEY	MHA	ACTIVE CARE PHARMACY	714-791-5449	ACTIVECAREPHARMACY2017@GMAIL.COM
ORANGE	FOUNTAIN VALLEY	MHA	ATHENOLAN PHARMACEUTICAL INC	714-593-5654	taowellnessrx@gmail.com
ORANGE	FOUNTAIN VALLEY	MHA	XPRESS MED PHARMACY	714-790-0119	info@xpressmedrx.com
ORANGE	GARDEN GROVE	Cardinal/ MedShoppe	GILBERT DRUGS	714-638-8230	gilbertpharmacy@gmail.com; info@gilbertdrugspharmacy.com
ORANGE	HUNTINGTON BEACH	Gerimed	CHAMPION RX (BOTH LTC AND RETAIL)	855-699-2221	TRACY.ANDERSON@CHAMPION-RX.COM; ows@gerimedgso.com
ORANGE	IRVINE	MHA	GENOA HEALTHCARE LLC	949-777-5338	Irvine-CA-20239@genoahealthcare.com; vaccine@genoahealthcare.com
ORANGE	IRVINE	MHA	OSO HOME CARE PHARMACY	949-660-7126	rbohrt@osohomecare.com
ORANGE	LA HABRA	Cardinal/ MedShoppe	BI RITE QUALITY PHARMACY	562-691-0539	TRodriguezDME@gmail.com
ORANGE	LOS ALAMITOS	Cardinal/ MedShoppe	UNIPHARMA INC	562-799-8844	info@unipharmainc.com
ORANGE	ORANGE	Innovatix	HARPER'S PHARMACY	951-520-0099	info@ameripharma.us
ORANGE	SANTA ANA	Gerimed	KCB PHARMACY INC DBA SOUTH COAST PHARMACY (BOTH LTC AND RETAIL)	714-755-7002	southcoastpharmacy@gmail.com; ows@gerimedgso.com
ORANGE	SANTA ANA	Cardinal/ MedShoppe	FIRST STREET MEDICAL PLAZA PHARMACY	714-954-1902	info@mercy-pharmacy.com
RIVERSIDE	HEMET	MHA	GENOA HEALTHCARE LLC	951-262-7576	tripatel@genoahealthcare.com; vaccine@genoahealthcare.com
RIVERSIDE	PERRIS	MHA	HOSPICARE PHARMACY INLAND EMPIRE	951-943-6303	jchang@hospicarepharmacy.com
RIVERSIDE	RIVERSIDE	Innovatix	PHARMERICA		ImmunizeLTC@pharmerica.com
RIVERSIDE	RIVERSIDE	Cardinal/ MedShoppe	THE MEDICINE SHOPPE	951-977-8667	2123@medicineshoppe.com
RIVERSIDE	SAN JACINTO	Cardinal/ MedShoppe	THE MEDICINE SHOPPE	951-654-2791	0454@medicineshoppe.com
SACRAMENTO	SACRAMENTO	Innovatix	PHARMERICA		ImmunizeLTC@pharmerica.com
SACRAMENTO	SACRAMENTO	Omnicare	OCR OF SACRAMENTO		Chona.Barcinas@omnicare.com
SAN BERNARDINO	CHINO HILLS	Cardinal/ MedShoppe	CHINO HILLS PROFESSIONAL PHARMACY	909-364-9244	
SAN BERNARDINO	RANCHO CUCAMONGA	MHA	DEL'S PHARMACY I	909-477-6300	n.kolta@delspharmacy.com s.rokes@delspharmacy.com
SAN BERNARDINO	REDLANDS	MHA	CITRUS PHARMACY	909-793-8259	preddy@citrusrx.com
SAN BERNARDINO	RIALTO	Cardinal/ MedShoppe	ABC PHARMACY	909-546-1000	
SAN BERNARDINO	UPLAND	Cardinal/ MedShoppe	KING'S PHARMACY	909-982-1778	
SAN DIEGO	SAN DIEGO	Innovatix	PHARMERICA		ImmunizeLTC@pharmerica.com
SAN DIEGO	SAN MARCOS	Cardinal/ MedShoppe	NORDAHL PHARMACY	760-501-0030	nordahlpharmacy@gmail.com Escondido-CA20203@genoahealthcare.com;
SAN DIEGO	ESCONDIDO	MHA	GENOA HEALTHCARE LLC	760-270-9068	vaccine@genoahealthcare.com jtaing@genoahealthcare.com;
SAN DIEGO	OCEANSIDE	MHA	GENOA HEALTHCARE LLC	442-222-3324	vaccine@genoahealthcare.com

SAN DIEGO	SANTEE	MHA	GENOA HEALTHCARE LLC	619-486-1532	Santee-CA-20335@genoahealthcare.com; vaccine@genoahealthcare.com
SAN DIEGO	SANTEE	MHA	PHILLIPS RANCH PHARMACY/ SJC MANAGEMENT	619-312-0929	evans.joanne@verizon.net
SAN DIEGO	SAN DIEGO	MHA	GUARDIAN PHARMACY SERVICES	858-652-6900	ron.belville@guardianpharmacy.net; cvrs@guardianpharmacy.net
SAN DIEGO	SAN DIEGO	MHA	SNP PHARMACY LLC	858-564-2000	vaccines@snp-rx.com; raffaella.meyer@snp-rx.com
SAN DIEGO	SAN DIEGO	Omnicare	OCR OF SAN DIEGO		Chadd.Eno@omnicare.com
SAN FRANCISCO	SAN FRANCISCO	MHA	GENOA HEALTHCARE LLC	415-871-0117	tpatel@genoahealthcare.com; vaccine@genoahealthcare.com
SAN JOAQUIN	STOCKTON	Gerimed	ANGKOR PHARMACY LTC (CLOSED-DOOR PHARMACY)	209-886-2099	angkorpharmacyltc@gmail.com; ows@gerimedgso.com
SAN JOAQUIN	STOCKTON	MHA	BJRX PHARMACY LTC	209-395-0555	pratapanne@bjrxpharmacyltc.com
SAN JOAQUIN	LODI	Omnicare	OCR OF NO. CA		Suzanah.Robinson@omnicare.com
SAN LUIS OBISPO	SAN LUIS OBISPO	Innovatix	PHARMERICA		ImmunizeLTC@pharmerica.com
SAN LUIS OBISPO	PISMO BEACH	MHA	MODEL DRUG INC.	805-481-5111	ryan@modeldrug.com
SANTA CLARA	SAN JOSE	MHA	BOTIKA LTC	408-378-2363	botikaltc@gmail.com
SANTA CRUZ	SANTA CRUZ	Cardinal/ MedShoppe	HORSNYDER PHARMACY	831-423-2315	philq@horsnyder.com
SHASTA	COTTONWOOD	Innovatix	*PHARMERICA - NORTHERN CA PHARMACY ALTERNATIVES		ImmunizeLTC@pharmerica.com
SHASTA	REDDING	MHA	OWENS PHARMACY #26	530-241-3550	OH26@owenshealthcare.com
SHASTA	REDDING	Omnicare	OCR OF REDDING		Fatemeh.Tahanejad@omnicare.com
SOLANO	VACAVILLE	MHA	CONSONUS PHARMACY SVCS CA NORTH LLC	707-359-3500	Itschen@consonushealth.com
SONOMA	SANTA ROSA	MHA	RP HEALTHCARE INC.	707-571-5955	john@rphealthcare.com
SONOMA	SANTA ROSA	Omnicare	OCR OF SANTA ROSA		Conrad.Tapado@omnicare.com
STANISLAUS	MODESTO	MHA	MID VALLEY HEALTH SERVICES LTC INC	209-552-7600	l.borrelli@midvalleyhs.com
VENTURA	VENTURA	Innovatix	PHARMERICA		ImmunizeLTC@pharmerica.com
VENTURA	THOUSAND OAKS	Cardinal/ MedShoppe	LOVING HANDS ENTERPRISES	805-379-9907	
VENTURA	SIMI VALLEY	Cardinal/ MedShoppe	SIMI PHARMACY	805-582-7474	simipharmacy@gmail.com
VENTURA	OXNARD	Cardinal/ MedShoppe	THE MEDICINE SHOPPE PHARMACY	805-487-6303	rraminani@gmail.com
VENTURA	VENTURA	Cardinal/ MedShoppe	THE MEDICINE SHOPPE PHARMACY	805-647-1133	rraminani@gmail.com
VENTURA	VENTURA	MHA	CARE PHARMACY	805-620-4899	apatel@collegecarerx.com

*THESE 2 LOCATIONS ARE MAINLY SERVING CONGREGATE, HOMEBOUND SETTING