

Welcome to California COVID-19 Vaccination Program Friday Provider Office Hours

Friday, February 25, 2022

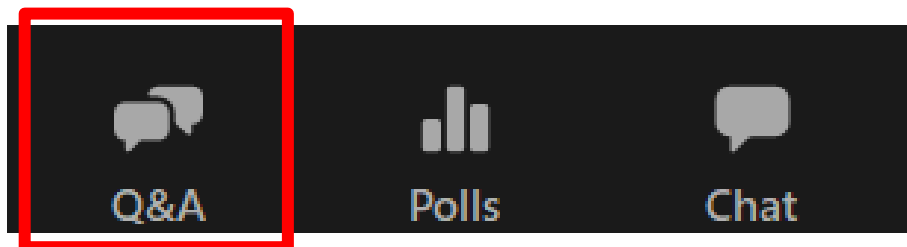


Vaccinate ALL 58

Together we can end the pandemic.

Provider Office Hours Q&A

During today's session, please use the Q&A panel to ask your questions so our subject matter experts can respond directly.



Housekeeping

Reminder to Panelists:



Please mute yourself when not speaking.

Please monitor the Q&A panel for questions you may be able to answer.

Reminder to Attendees:



Today's session is being recorded. Access today's slides and archived presentations at:
<https://eziz.org/covid/education/>



If you have technical difficulties, please contact Rachel.Jacobs@cdph.ca.gov

Agenda: Friday, February 25, 2022

No.	Item	Speaker	Time (AM)
1	Welcome & Announcements	Leslie Amani (Moderator)	9:00 – 9:05
2	Vaccine Administration	Elizabeth Reosti (CDPH)	9:05 – 9:10
3	Therapeutics	John Openshaw, M.D. (CDPH)	9:10 – 9:15
4	Clinical Update	Caterina Liu, M.D. (CDPH)	9:15 – 9:20
Q&A			9:20 – 9:30
5	Storage & Handling	Kate McHugh (CDPH)	9:30 – 9:35
6	Vaccine Management	Eric Norton (My Turn) and Maria Volk (CDPH)	9:35 – 9:45
7	Wrap Up & Resources	Leslie Amani (Moderator)	9:45 – 10:00
Q&A			

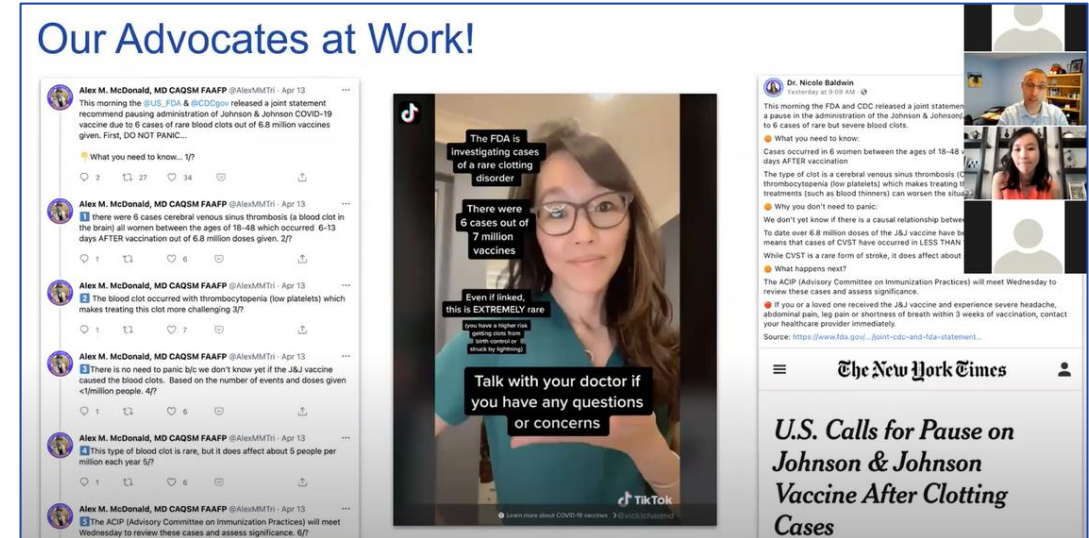
Announcements

Leslie Amani, CDPH

Using Social Media to Effectively Communicate about COVID-19 Vaccines: Small Group Training

Peer-to-Peer Social Media Training

- Attendees will participate in small breakout groups, each with a facilitator experienced in Facebook, Twitter, Instagram, or Tik Tok messaging.
- When: Wednesday, March 2 at 12:30PM
- [Register here!](#)



Pfizer COVID-19 Vaccine Medical Updates & Training Sessions



Date & Time (linked)	Password
Tuesday, March 1 - 12PM	svU8YkF58Qc
Wednesday, March 2 - 9AM	3jJ2WJMgeb8
Thursday, March 3 - 9AM	4UBrwQDva77
Tuesday, March 8 - 12PM	yMMMMnf5U44
Wednesday, March 9 - 9AM	2nWpjWa5H8B
Thursday, March 10 - 9AM	YMeTxT4qf43
More sessions listed! NOTE: All times listed here are P.S.T.	

For providers and immunization staff personnel. **Please attend one of these sessions!**

Topics include:

- Introduction of new Controlant Temperature Monitoring Device
- Use of each vaccine presentation, including storage, handling, preparation, and administration for:
 - Ages 5 through 11 Years
 - Ages 12 Years and Older

Take the VA58 Misinformation 101 Training!

The VA58 Trust & Safety Team is hosting a live training to help LHJs, MCEs, and Providers understand and respond to misinformation related to COVID-19 vaccines circulating within Californian communities.

WHAT IS IT?

- **This interactive, hour-long, live training** will provide partners with a better understanding of what misinformation is, how it impacts people and the broader vaccination effort, and how to respond to it.

WHEN IS IT?

- The training will take place on **March 3rd from 12:30-1:30pm PST** via Zoom. Please email rumors@cdph.ca.gov if you don't currently have the invite but would like to attend.

WHY TAKE IT?

- Conflicting information about the COVID-19 vaccines plays a big role in vaccine hesitancy, and **the VA58 Campaign needs your support** slowing its spread so that we can vaccinate all 58!




Vaccinate ALL 58
Together we can end the pandemic.

VA58 Trust & Safety Team Presents...

**Misinformation 101
Training**

 For Discussion Purposes Only

VA58 Trust & Safety Team Updates

The VA58 Trust & Safety Team reports on trending narratives about COVID-19, delivers biweekly briefings, and develops comprehensive resources to increase awareness around mis-, dis-, and mal-information, as well as the State's capacity to counter it.

BIWEEKLY BRIEFINGS

Biweekly briefings provide partners with the top COVID-19 vaccine mis/dis topics and trends, and invitees receive a copy of the report post-briefing.

To be added to the invite, email rumors@cdph.ca.gov.

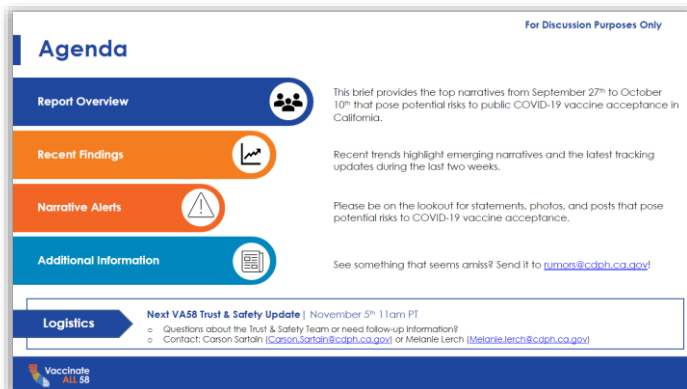
RUMORS INBOX

The Rumors Inbox serves as a tip line for our partners to submit the COVID-19 rumors they're hearing online and within their communities to our team. We incorporate the submissions into our team's reporting.



Report COVID-19 Vaccine Rumors to:

rumors@cdph.ca.gov



RECENT TOPICS & RESOURCES

Mis/Dis/Mal-information example: Given California's repeal of mask mandates, COVID-19 vaccine mandates should also be repealed

- **Trusted Resources:** [CA Covid-19 School Readiness Hub](#), [With COVID-19 Conditions Improving, State Public Health Leaders Modify Omicron Surge Policies \(ca.gov\)](#), [SMARTER Plan - Coronavirus COVID-19 Response \(ca.gov\)](#)

Mis/Dis/Mal-information example: Plans to vaccinate children under five are motivated by profit and greed, not public health concerns.

- **Trusted Resources:** [CDC Information for Pediatric Healthcare Providers \(cdc.gov\)](#), [AAP About the COVID-19 Vaccine: Frequently Asked Questions \(aap.org\)](#)

SMARTER Plan Resources



California's COVID-19 Response

[COVID-19 Home](#) [Protect Your Health](#) [Get Latest Guidance](#) [See the Numbers](#) [Learn More](#)



The California SMARTER Plan

As we enter the next phase with COVID-19, which may include future surges and new variants, California will continue to be the nation's model for preparedness. We stand ready to build on what we have learned over the past two years to meet the COVID-19 challenges that lie ahead.

[See the Plan](#)

[Read the Q&A](#)

[SMARTER Plan PDF](#)

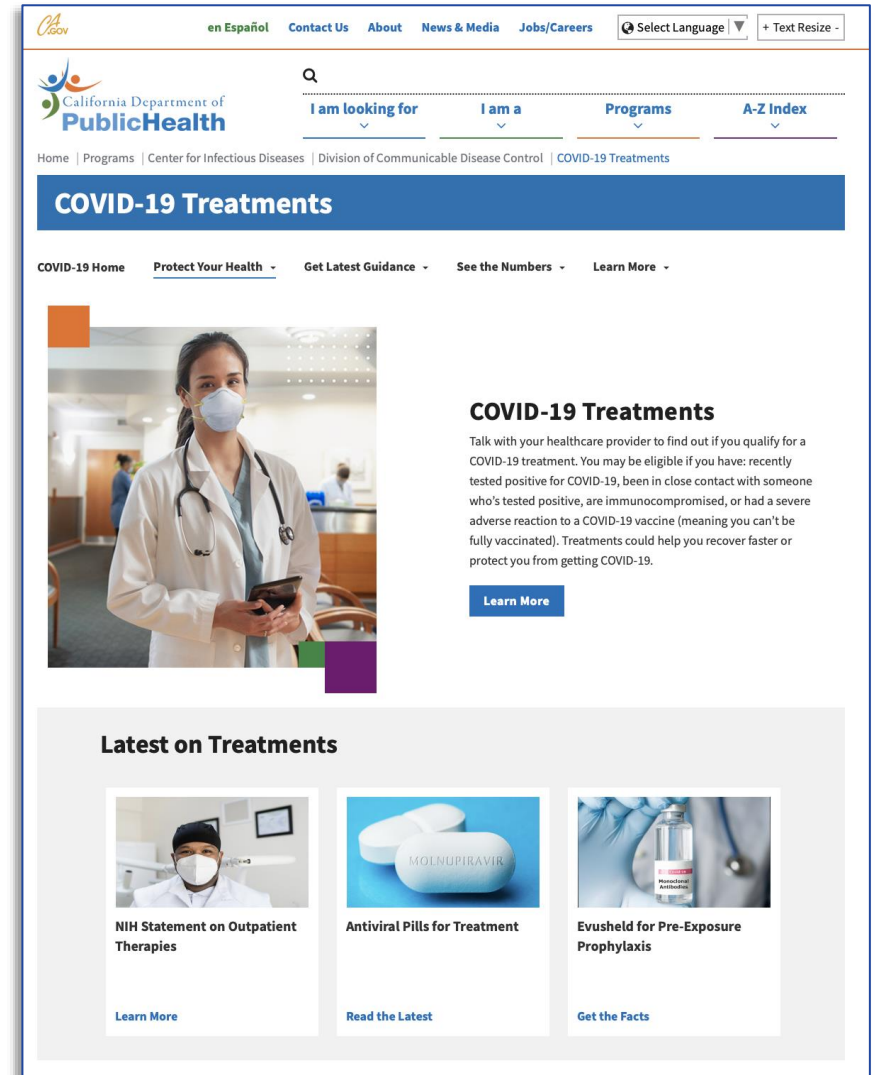
[SMARTER Plan Toolkit](#)

[SMARTER Plan on CA All](#)



CDPH COVID-19 Treatments Webpage

- FAQs for general public and healthcare providers
- Information on allocation, distribution, and ordering
- Drug fact sheets
- Links to further resources
- Linked in the “Protect Your Health” section on the CDPH COVID-19 webpage





Missed Vaccination Opportunities & Wastage Job Aid

- Avoid missed opportunities for vaccination
- Vaccinate family members or friends who accompany patients to medical visits, even if they are not established patients at the practice.
- Follow clinical best practices to maximize vaccination
 - Assess immunization status at every visit
 - Make a strong recommendation for immunization

Missed Vaccination Opportunities & Wastage



California COVID-19 Vaccination Program

Never miss a vaccination opportunity because of fear of vaccine wastage! Do your best to follow clinical and inventory management best practices for vaccination to maximize vaccinations and minimize dose wastage where possible.

Key Points

Vaccine wastage is expected, may be unavoidable, and will even increase as vaccine rollout continues because

- more providers, including smaller provider sites, are now receiving vaccine;
- vaccine continues to be available only as multi-dose vials; and
- vials must often be punctured without using the full number of doses printed on the label.

Never Miss a Vaccination Opportunity

CDC Guidance: Vaccinate every eligible person who presents at a vaccination site—even if it means puncturing a vial at the end of the day.

Several studies have shown eliminating missed opportunities could increase vaccination coverage by up to 20% ([Pink Book](#), [“System-Based Barriers”](#)). Follow these tips:

- Vaccinate family members or friends who accompany patients to medical visits even if they are not established patients at the vaccinating practice.
- Continue [outreach to employers or other community partners](#) that have a large membership or network to arrange vaccination events for primary or booster doses.
- Follow both clinical and inventory management best practices for vaccination to maximize vaccination and minimize dose wastage.

Punctured vials must be used within:

12 hours

- Pfizer (5-11Y orange cap)
- Pfizer Tris-Sucrose 12Y+ (gray cap)
- Moderna

6 hours

- Pfizer (12Y+ purple cap)
- Johnson & Johnson's Janssen (must be at 2-8 degrees Celsius)

2 hours

- Johnson & Johnson's Janssen (at room temperature)

Tips to Reduce Wastage

- Follow guidance in [CDC Toolkit](#) and [CDC summarized guidance](#) to reduce waste in COVID-19 vaccine storage, transport, handling, and administration in accordance with the CDC and manufacturer's guidance.
- If there are a substantial number of expiring vials, contact your local health department and other partners to discuss redistribution of vaccine to areas of need.
- Work with your local health department in advance to determine thresholds for the number of vials in danger of being wasted that would trigger a call for guidance.
- Make every effort to coordinate the number of vials needed with the anticipated number of patients when preparing for daily clinics to help reduce over-thawing of vaccine.

California COVID-19 Vaccination Program


IMM-1379 (2/16/22)

Stay informed!

Provider Resources on eziz.org/covid

Frequent Content Updates:

- Alerts
- Program Enrollment
- My Turn Onboarding
- Reporting Requirements
- Patient Resources
- Archived Communications
- Education & Support Materials
- More to explore!

**Vaccinate
ALL 58**

California COVID-19 Vaccination Program

ENHANCED BY Google

Program Updates

Program Enrollment

My Turn Onboarding

Vaccine Management

Vaccine Administration

Reporting Requirements

Archived Communications

Patient Resources

Provider Support

COVID Call Center

Email: [Program Info](#)
Phone: (833) 502-1245
Hours: Mon-Fri, 8AM-6PM

Contact us for questions about the program or help with accessing documents.

myCAvax and My Turn


Email:
[myCAvax Technical Support](#)
[MyTurn Onboarding](#),
[MyTurn Technical Support](#)
Phone: (833) 502-1245
Mon-Fri, 7AM-7PM
Sat-Sun, 8AM-1PM


My Turn Clinic Translation Line:
(833) 980-3933
Mon-Fri: 8AM-8PM
Sun-Sat: 8AM-5PM


Vaccines


[Manufacturer Contacts](#)

Updates for Providers

**FAQ**

**Provider Office Hours**

**Training**

**Training Calendar**

Alerts:

Updated Vaccination Schedule

- [Interim Clinical Considerations: Intervals for mRNA Vaccine](#)
- [COVID-19 Vaccine Timing by Age \(Eligibility Chart\)](#) update coming soon

Now Enrolling Providers of Pediatric Services

- [Make NO Mistake—COVID-19 Is A Childhood Illness](#)
- [Benefits for Primary Care Providers](#)
- [Find Information on How to Enroll](#)

Children 6 Months to 4 Years – ON HOLD as of 2/11/22

- [Pfizer 6M-4Y No Longer Available for Pre-Orders](#)
- [Pfizer Training](#)
- [Comparison Guide of COVID-19 Vaccine Products](#)

Featured Resources

Tools to Avoid Vaccine Mix-Ups:

- [Comparison Guide of COVID-19 Vaccine Products](#)
- [COVID-19 Vaccine Timing by Age \(Eligibility Chart\) | Spanish](#)
- [Vaccine Administration Checklist](#)
- [Preventing Administration Errors](#)
- [Coadministration of COVID-19 Vaccine with Other Vaccines | Tips | Preteens](#)

Vaccine Management:

- [Upcoming Expiration Dates](#)
- [Reporting Doses Spoiled, Expired, or Wasted \(including Moderna booster doses\)](#)
- [Ordering Vaccines | Ordering & Distribution Cadence](#)
- [Receiving Redistributed Small Orders](#)

COVID-19 Vaccine Provider FAQs

- Answers to provider questions
- Updated weekly: last updated 2/23/2022
- Currently in its 60th iteration!



Q: *Where can COVID-19 vaccine Providers view a visual of COVID-19 vaccine timing by age?*

A: CDPH created a new job aid that breaks down vaccine timing by age for both immunocompromised and immunocompetent individuals. Please view the COVID-19 Vaccine Timing by Age chart [here](#).



Q: *By what date are all California health care workers required to receive COVID-19 vaccine booster doses?*

A: On February 22, 2022, an updated [California Public Health Order](#) extended the date that all California health care workers are required to receive COVID-19 vaccine booster doses to March 1, 2022. This delay allows workers who have completed their primary vaccination series and recently had COVID-19 to delay their booster dose for up to 90 days from infection. For further information, please visit [Health Care Worker Vaccine Requirement Order](#).

California COVID-19 Vaccination Program Provider FAQs

For Prospective, Newly Enrolled, and Current California COVID-19 Vaccine Providers. Providers may also visit [California COVID-19 Vaccination Program](#) for information and updates.

Directions: [Click on a category to be directed to related FAQs.](#)

Contents

New and Updated FAQs	2
Pediatric Providers	4
Vaccine Program Management.....	8
Provider Enrollment	10
Ordering	11
Distribution/Redistribution	12
Vaccine Administration	13
Additional Doses for Immunocompromised	17
Booster Doses	18
Vaccine Storage & Handling	20
Inventory	23
Reporting	23
Costs & Reimbursement	26
Communication Resources	27

[Provider FAQs on EZIZ, Updated Weekly](#)



Vaccinate ALL 58

COVID-19 Vaccination Program Webinars and Training for Providers

Week of February 28, 2022

Note: Calendar subject to change

	Monday 2/28	Tuesday 3/1	Wednesday 3/2	Thursday 3/3	Friday 3/4
myCAvax	myCAvax Vaccine Order Request with Q&A 10:00 am – 10:30 am				Provider Office Hours 9:00 am – 10:00 am PW: Immunize!
Combined Office Hours and Events	My Turn and myCAvax Office Hours 12 pm – 1 pm	Pfizer BioNTech COVID-19 Vaccine Training & Education* 12:00 pm – 1:00 pm PW: svU8YkF58Qc What's New in myCAvax 12:30 pm – 1:00 pm	Pfizer BioNTech COVID-19 Vaccine Training & Education* 9:00 am – 10:00 am PW: 3jJ2WJMgeb8	Pfizer BioNTech COVID-19 Vaccine Training & Education* 9:00 am – 10:00 am PW: 4UBrwQDva77 Vaccinate 58 Misinformation 101 Training! 12:30 pm – 1:30 pm	
* Pfizer BioNTech COVID-19 Vaccine Training & Education topics vary by day and include the latest information about vaccine storage, handling, preparation, and administration; recent medical updates, healthcare provider resources, and a Q&A session					
View On Demand	<ul style="list-style-type: none">What's New in myCAvax for Release 21 (v. 1/18/22)Intro to My Turn Onboarding (v. 1/4/22)Latest Features in My Turn (* Requires My Turn Login)	<ul style="list-style-type: none">Provider 101 Account Enrollment: Section A: Organization Application (v. 10/21/21)Provider 101 Account Enrollment: Section B: Location Application (v. 10/21/21)Provider Office Hours and MCE Office Hours Archived Sessions	<ul style="list-style-type: none">Recording a Transfer/Redistribution Report (v. 12/20/21)Recording a Shipment Incident (v. 12/20/21)Using Multi-Line Ordering to Request Vaccine in myCAvax (v. 2/23/22)	<ul style="list-style-type: none">Recording an Excursion Event (v. 12/20/21)Recording a Waste Event (v. 12/20/21)	

Help

General email: covidcallcenter@cdph.ca.gov
CDPH Provider Call Center: 1-833-502-1245, 8am-6pm

myCAvax Help Desk Email: myCAvax.HD@accenture.com
Phone: (833) 502-1245



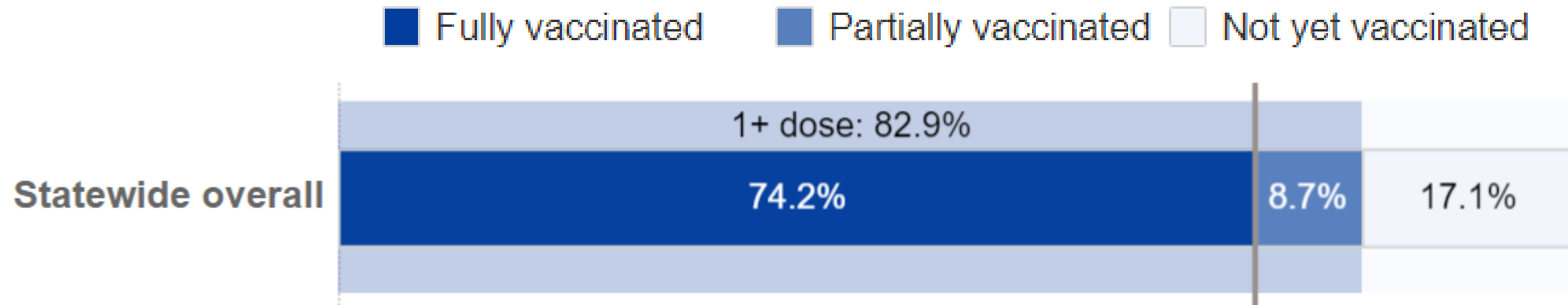
Vaccine Administration Data

Elizabeth Reosti, CDPH

Vaccine Administration Summary

as of February 24, 2022

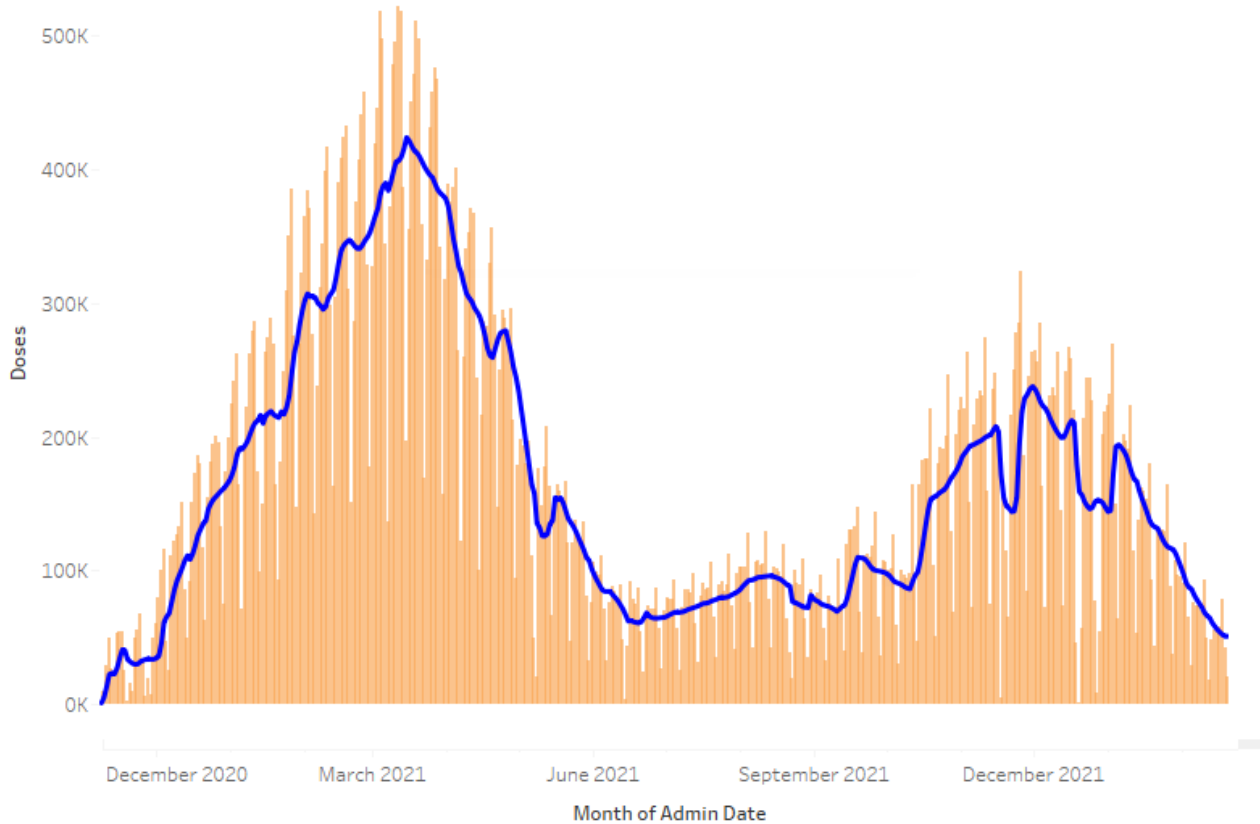
Total Doses Administered: **71,356,298**



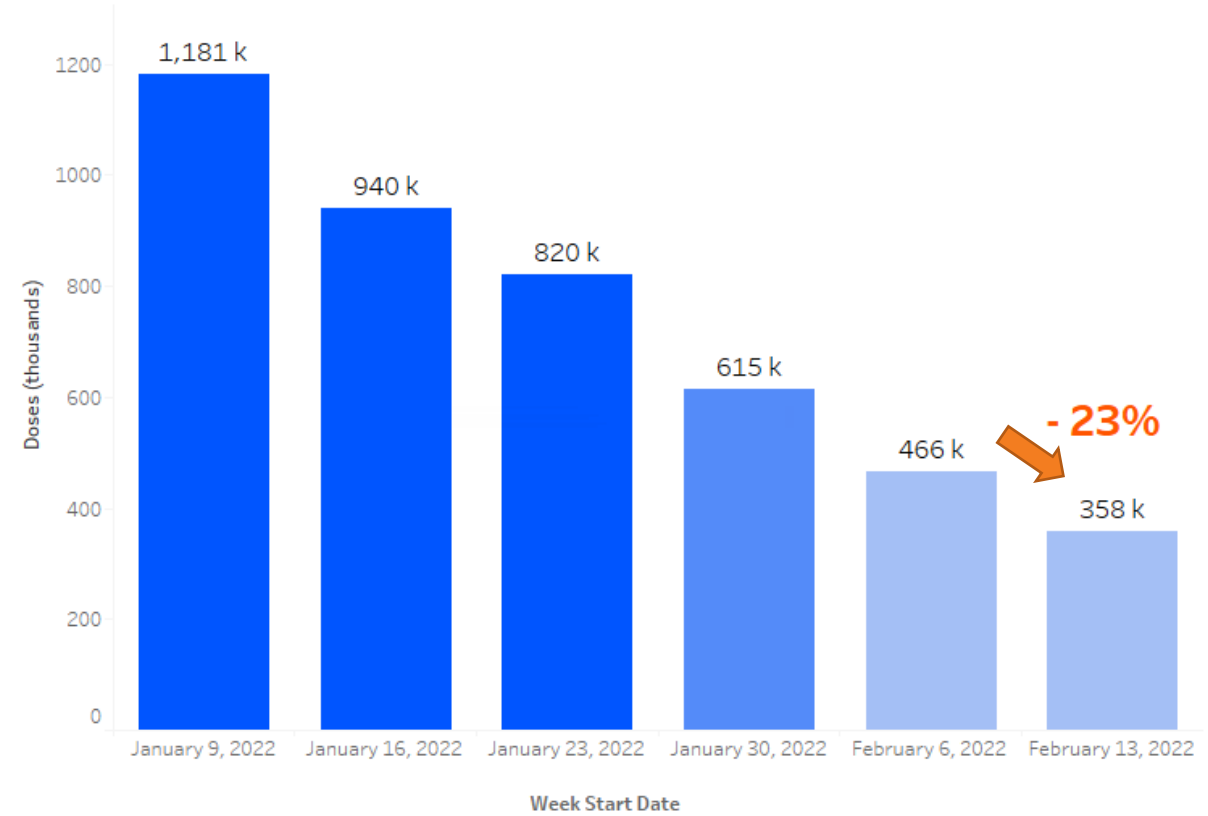
Trends in Vaccine Administration

as of February 22, 2022

New Doses Administered

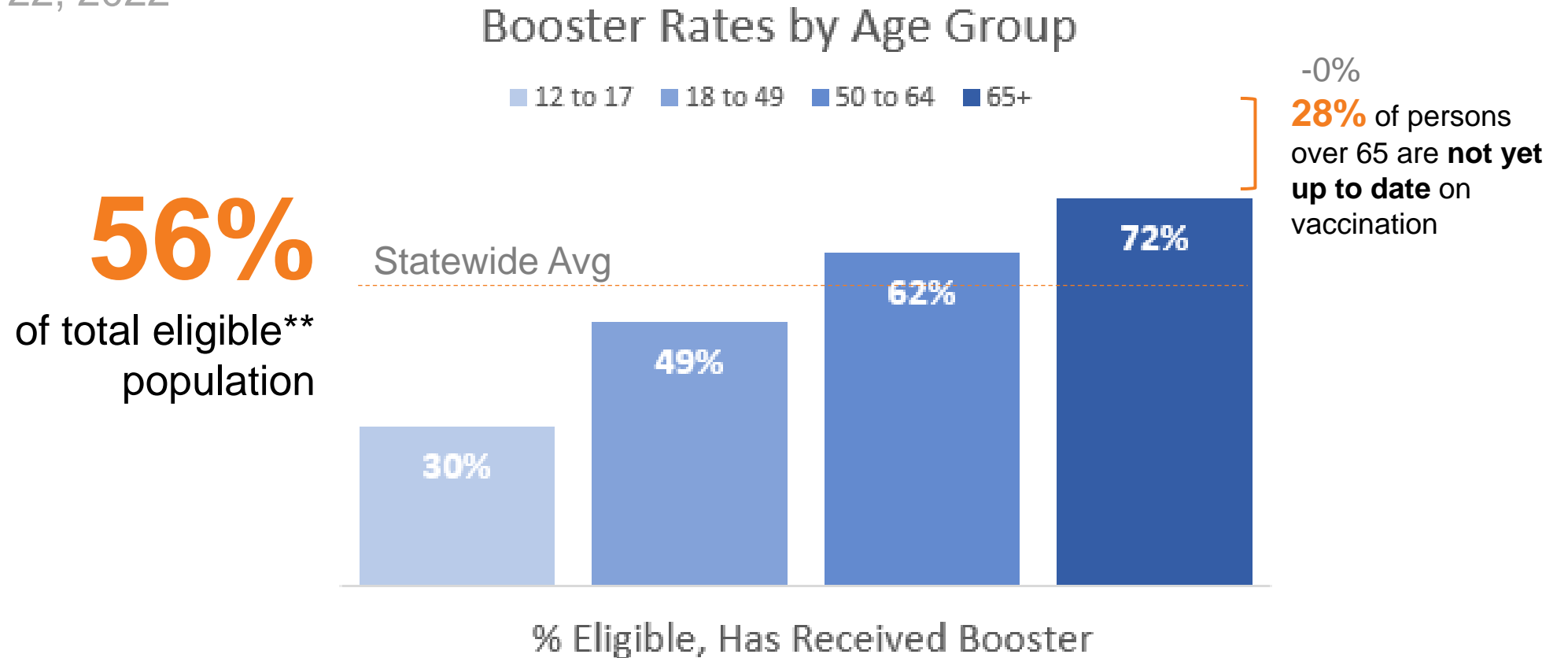


New Doses Administered (thousands)



Booster* Vaccinations

as of February 22, 2022



*Includes Additional Doses

**Note that 12-17 is the newest eligible age group for booster vaccination.

**24,498,076 individuals, 12+ years of age, and J&J + 2 months or mRNA + 5 months

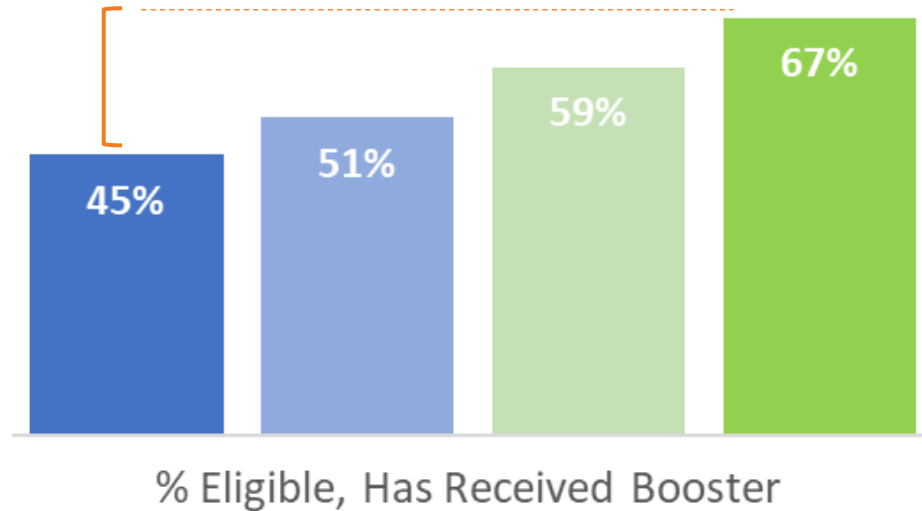
Booster* Vaccinations

as of February 22, 2022

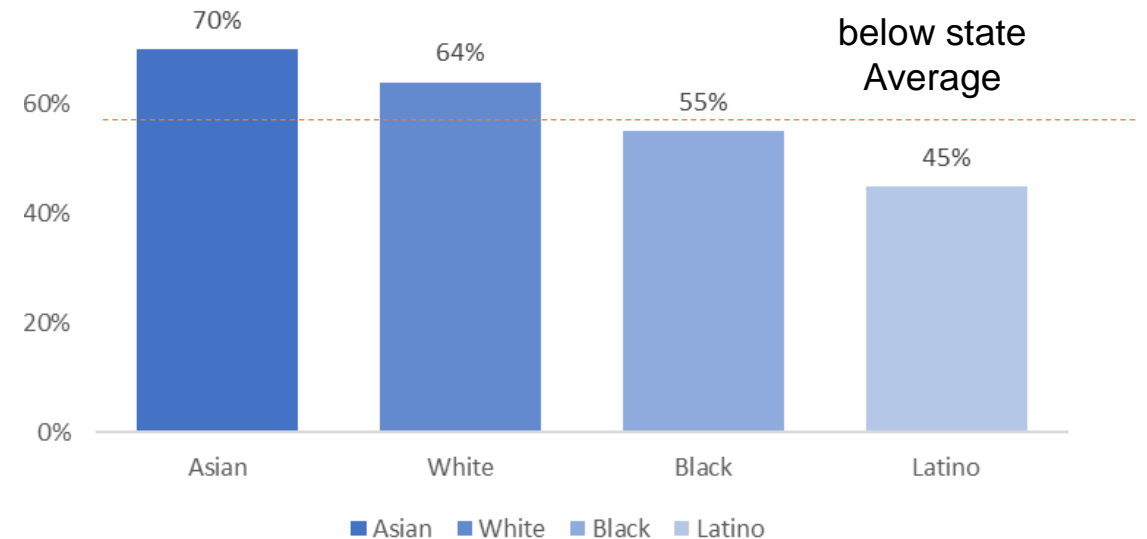
Booster Rates by VEM/HPI Quartile

■ Q1 ■ Q2 ■ Q3 ■ Q4

-1%
22% gap in
booster
vaccinations
between Q1
and Q4



% Eligible, Has Received Booster



Age Cohorts

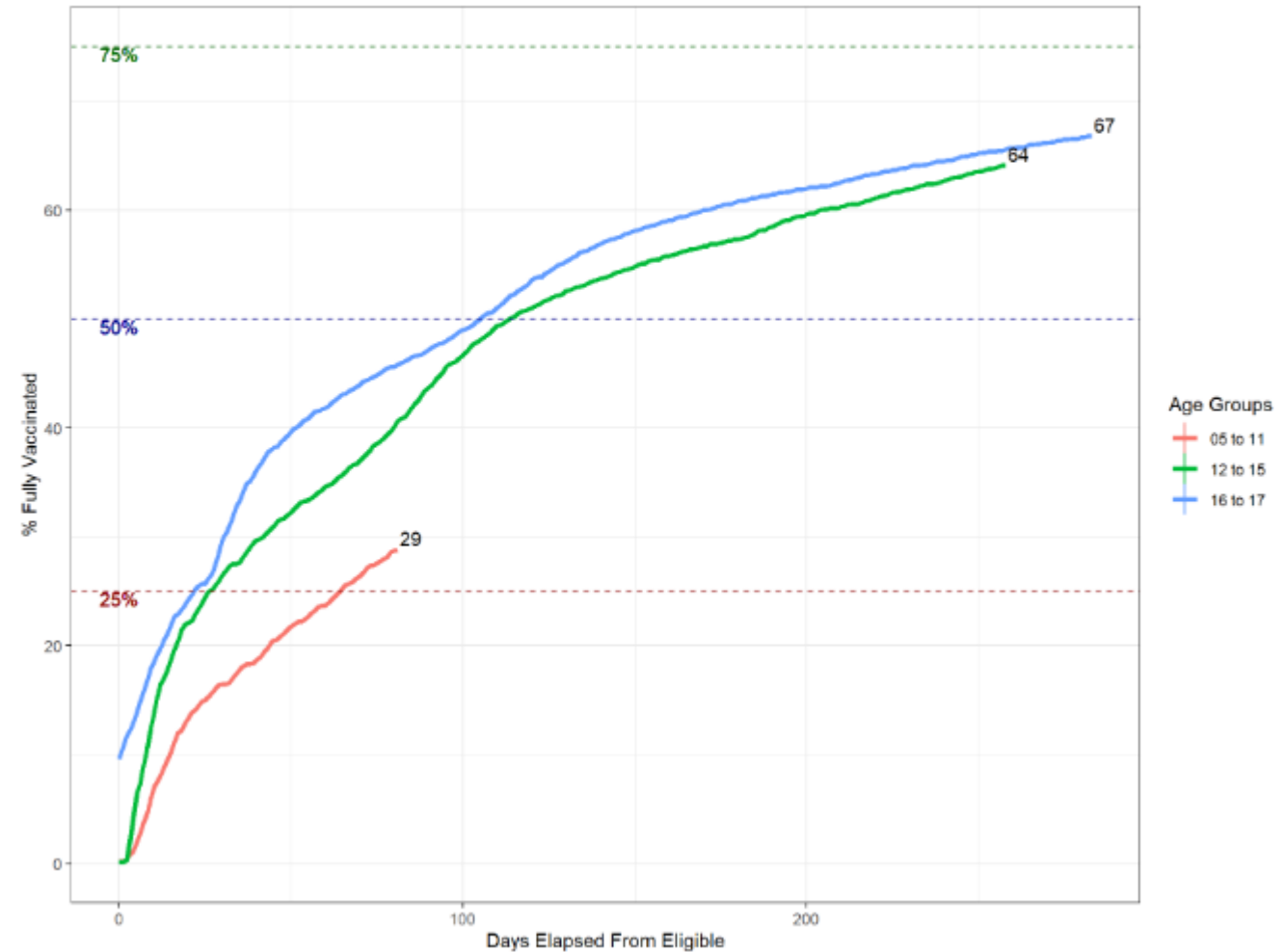
as of February 14, 2022 (holiday reporting delay)

Pediatric Vaccination Rates vary by Age

- 5-to-11-year-olds took **twice** as long as 12-to-17-year-olds to reach **25% fully vaccinated rate**

Adolescent Age Cohorts

Percent Fully Vaccinated by Adolescent Age Groups
Based on Number of Days Since Approved Eligibility

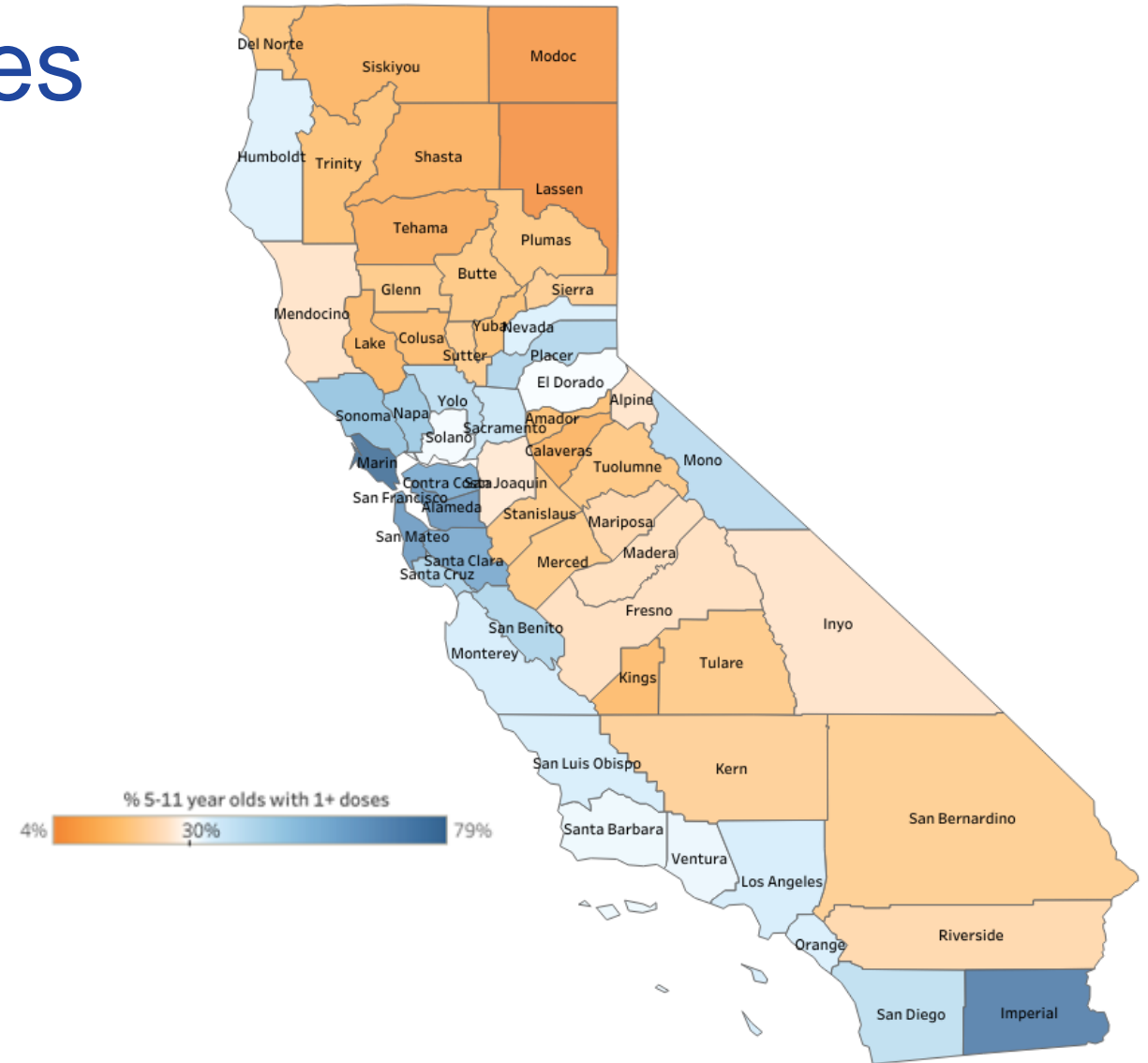


5-to-11* Vaccination Rates

as of February 18, 2022

Statewide Average = **36%**

County	Rate
Bay Area	57%
Greater Sacramento	35%
Southern California	33%
San Joaquin Valley	21%
Northern California	18%



Data Summary

as of February 22, 2022

Statewide Trends – modest increase, rates slowing

71.0 Million doses administered

-23% change in new doses from the previous week

Equity Metrics - no change

22% gap between Q1 and Q4 boosters

33% gap between Q1 and Q4 5-to-11-year-olds

Ongoing Data Work

Age-Race-County Rates

Improved Geographic Data (Region)

Promote Pediatric Access (VFC)

Race/Ethnicity Quality Improvement

Therapeutics

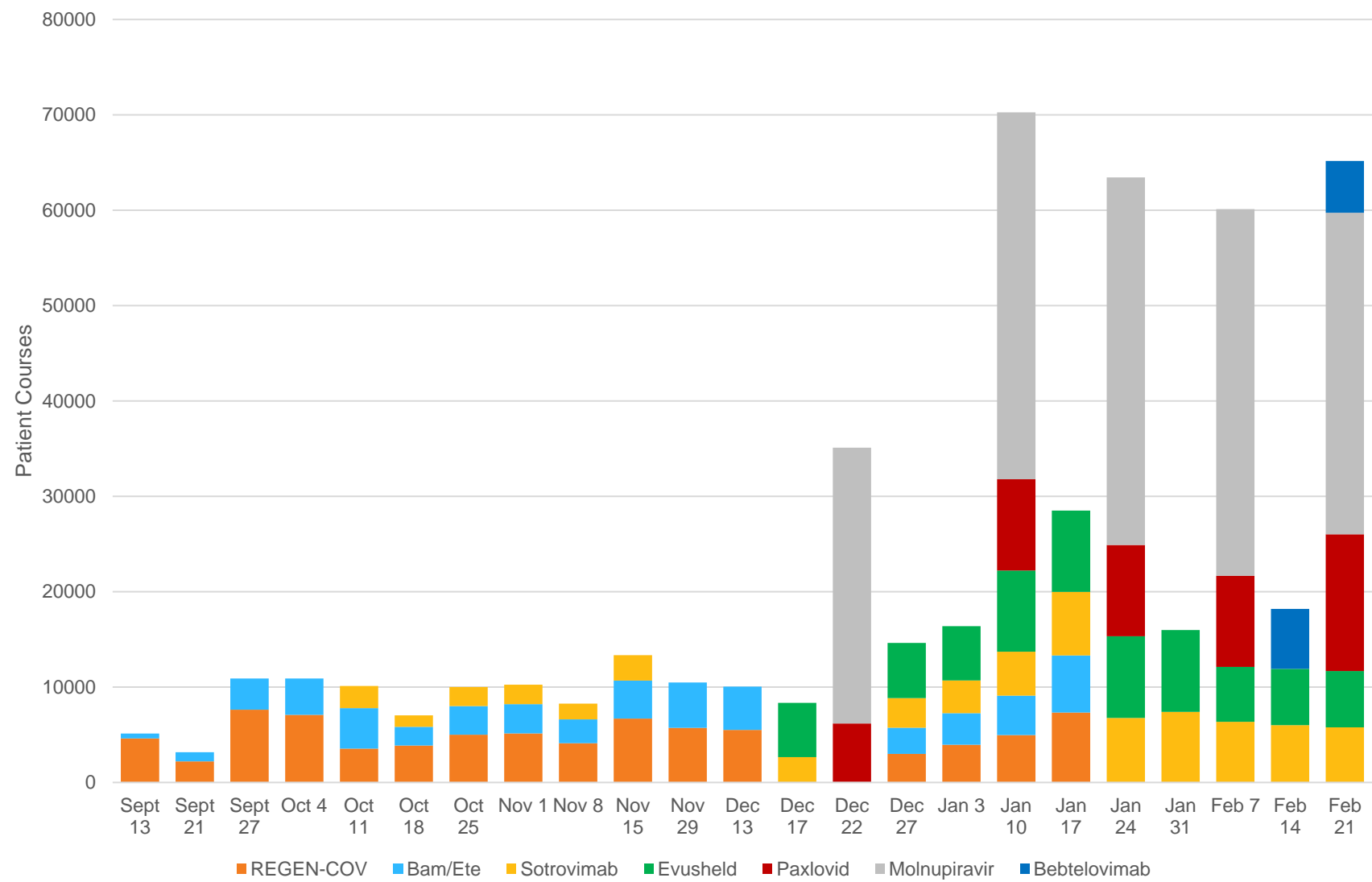
John Openshaw, M.D., CDPH

Available Outpatient Therapies at Each Disease Stage

Treatment Options	SARS-CoV-2 Negative (-) <i>Prophylaxis</i>		SARS-CoV-2 Positive (+) <i>Treatment</i>
	Not Exposed	Exposed	Mild Illness or Moderate Illness
	Long-Acting Monoclonal Antibody <ul style="list-style-type: none"> ➤ Tixagevimab /cilgavimab (EVUSHELD) 	Monoclonal Antibodies <ul style="list-style-type: none"> ➤ Bamlanivimab/etesevimab ❌ ➤ Casirivimab/imdevimab (REGEN-COV) ❌ 	Monoclonal Antibodies <ul style="list-style-type: none"> ➤ Bamlanivimab/etesevimab ❌ ➤ Casirivimab/imdevimab (REGEN-COV) ❌ ➤ Sotrovimab ➤ Bebtelovimab Antivirals <ul style="list-style-type: none"> ➤ Nirmatrelvir/ritonavir (PAXLOVID) ➤ Molnupiravir (LAGEVRIO) ➤ Remdesivir (VEKLURY)

❌ Not effective against Omicron; as of January 24, **not** authorized for use in any USA state

California Allocations by Product: Sept 13, 2021 – Feb 21, 2022



CDPH Allocation Strategies

Product	Authorized Indication	Distribution Point	Allocation Strategy
Sotrovimab & Bebtelovimab Anti-SARS-CoV-2 monoclonal antibodies	Treatment of mild to moderately ill outpatients with positive SARS-CoV-2 viral test	Facilities able to provide infusion services and monitor patients; number of courses for each site determined by Medical Health Operational Area Coordinators (MHOACs) at county level	Allocated to counties Based on new cases (7-day average) and new COVID-19 hospitalizations (7-day average). Weighted 25% to cases; 75% to hospitalizations.
Paxlovid Oral protease inhibitor & Molnupiravir Oral nucleoside analogue	Treatment of mild to moderately ill outpatients with positive SARS-CoV-2 viral test	Allocated to a limited number of providers and pharmacies that can dispense in each county, final list determined by local jurisdictions	Allocated to counties Based on new COVID-19 cases (7-day average) and Healthy Places Index (HPI); with 50% weighted to cases and 50% weighted to HPI. Within the 50% allocated by HPI, 40% to Q1 (most disadvantaged); 30% to Q2; 20% to Q3; 10% to Q4 (most advantaged).
Evusheld Anti-SARS-CoV-2 monoclonal antibody	Pre-exposure prophylaxis	Facilities able to provide infusion services and monitor patients; number of courses for each site determined by Medical Health Operational Area Coordinators (MHOACs) to determine number of courses for each site at county level,	Allocated to counties Based on share of the population in different HPI equity quartiles; 40% of state allocation to Q1 (most disadvantaged); 30% to Q2; 20% to Q3; 10% to Q4 (most advantaged).

New Monoclonal Antibody: Bebtelovimab

The U.S. Food and Drug Administration (FDA) has issued an Emergency Use Authorization (EUA) for the emergency use of Bebtelovimab for the treatment of mild-to-moderate coronavirus disease 2019 (COVID-19) in **adults and pediatric patients (12 years of age and older weighing at least 40 kg):**

- with positive results of direct SARS-CoV-2 viral testing, and
- who are at high risk for progression to severe COVID-19, including hospitalization or death, and
- for whom alternative COVID-19 treatment options approved or authorized by FDA are not accessible or clinically appropriate.

Dosage: 175 mg single intravenous injection over at least 30 seconds. Give as soon as possible after positive results of direct SARS-CoV-2 viral testing and within 7 days of symptom onset.

Pharmacokinetics: No expected drug interactions, renal or hepatic impairment concerns, or bodyweight dosing adjustments

Clinical Outcome Data: Still being studied; phase 1/2 studies suggest similar safety profile to other monoclonals

Resources

Because COVID-19 therapeutics are such a rapidly changing area of pandemic response, we encourage all providers to regularly check for updates on variant resistance, eligible populations, and treatment guidelines

Best resources for up-to-date information:

- Therapeutic Locator (HHS): [COVID-19 Therapeutics Locator \(arcgis.com\)](https://arcgis.com)
- NIH Treatment Guidelines: [COVID-19 Treatment Guidelines \(nih.gov\)](https://nih.gov)
- ASPR/HHS website: [COVID-19 Therapeutics | HHS/ASPR](https://hhs.gov)
 - Side-by-side comparison table for specific drugs: [Side-by-Side Overview of Outpatient Therapies Authorized for Treatment of Mild-Moderate COVID-19 \(hhs.gov\)](https://hhs.gov)
- CDPH COVID-19 Treatments site (information for patients and providers): [COVID-19 Treatments \(ca.gov\)](https://ca.gov)
- Healthcare Provider Fact Sheets:
 - [Paxlovid](#), [Sotrovimab](#), [Bebtelovimab](#), [Remdesivir](#) ([here](#) for patients <12 years of age), [Molnupiravir](#), and [Evusheld](#)

Clinical Update

Caterina Liu, M.D., CDPH

CDC and WSSSRW: Considerations for Intervals for mRNA COVID-19 Vaccine Primary Series

TABLE 2. COVID-19 vaccination schedule for the primary series in the general population*

Primary series vaccine manufacturer	Age group	Number of doses in primary series	Number of booster doses	Interval between 1st and 2nd dose	Interval between primary series and booster dose
Pfizer-BioNTech	5–11 years	2	NA	3 weeks	NA
Pfizer-BioNTech	≥12 years	2	1	3–8 weeks [†]	≥5 months
Moderna	≥18 years	2	1	4–8 weeks [†]	≥5 months
Janssen	≥18 years	1	1	NA	≥2 months

[†]An **8-week** interval may be optimal for some people ages 12 years and older, especially for males ages 12 to 39 years. A **shorter interval** (3 weeks for Pfizer-BioNTech; 4 weeks for Moderna) between the first and second doses remains the recommended interval for: people who are moderately to severely immunocompromised; adults ages 65 years and older; and others who need rapid protection due to increased concern about community transmission or risk of severe disease.



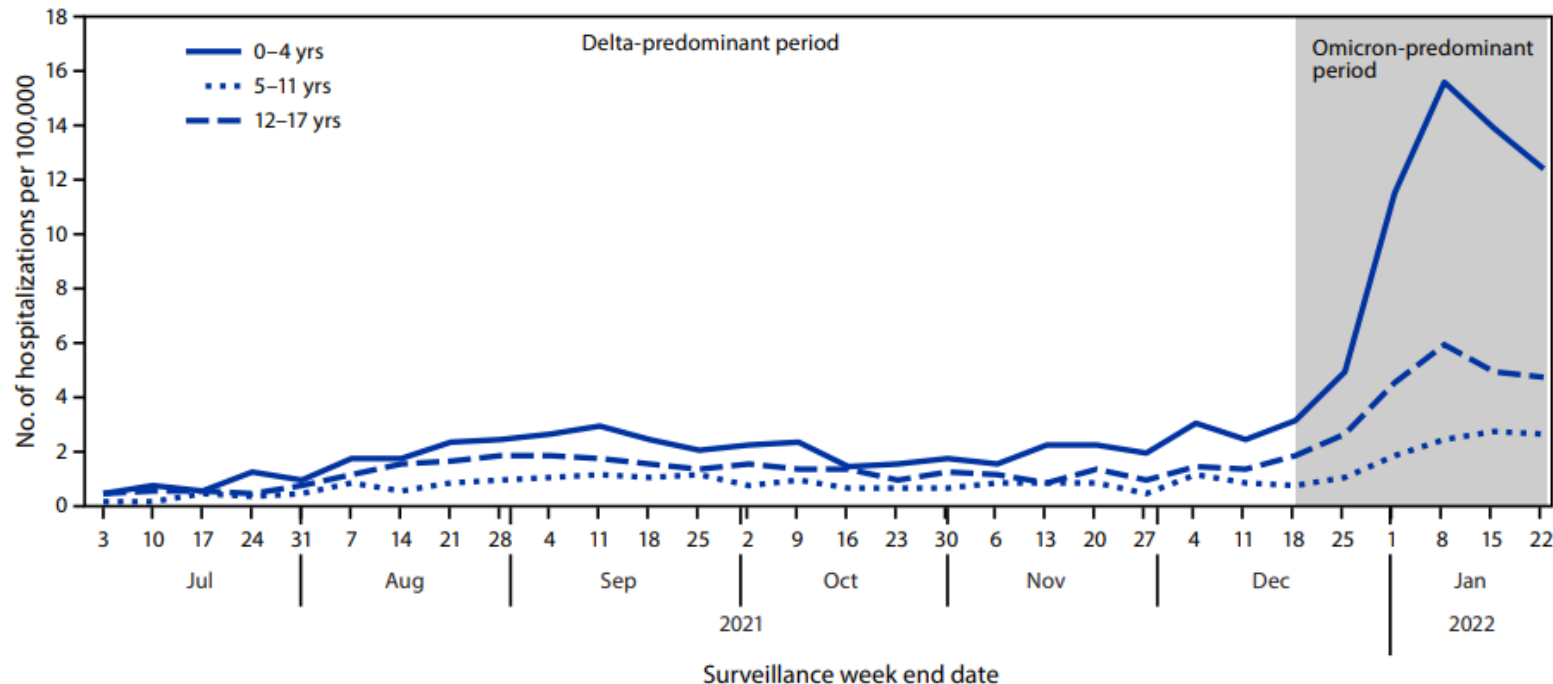
Job Aid: COVID-19 Vaccine Timing by Age

- 1-page COVID-19 vaccine guidance schedule
- Breaks down schedule by age and vaccine type

COVID-19 Vaccine Timing by Age				Vaccinate ALL 58
Age	Vaccine	Routine Schedule		
5-11	Pfizer-Pediatric (5-11)	1st Dose	21 days	2nd Dose
12+	Pfizer/Comirnaty (12+)	1st Dose	21 days	2nd Dose ≥5 months Booster 12-17: Pfizer 18+: Pfizer/Moderna (preferred) or J&J*
18+	Moderna/Spikevax	1st Dose	28 days	2nd Dose ≥5 months Booster of Moderna/Pfizer (preferred) or J&J*
18+	Johnson & Johnson Pfizer/Moderna preferred*	1st Dose	≥2 months	Booster of Moderna/Pfizer (preferred) or J&J*
Age	Vaccine	Schedule if Moderately or Severely Immunocompromised		
5-11	Pfizer-Pediatric (5-11)	1st Dose	21 days	2nd Dose ≥28 days 3rd Dose
12+	Pfizer (12+)	1st Dose	21 days	2nd Dose ≥28 days 3rd Dose ≥3 months Booster 12-17: Pfizer 18+: Pfizer/Moderna (preferred) or J&J*
18+	Moderna/Spikevax	1st Dose	28 days	2nd Dose ≥28 days 3rd Dose ≥3 months Booster of Moderna/Pfizer (preferred) or J&J*
18+	Johnson & Johnson Moderna/Pfizer preferred*	1st Dose	28 days	2nd Dose of Pfizer or Moderna ≥2 months Booster of Moderna/Pfizer (preferred) or J&J*
* Use of mRNA COVID-19 vaccines is preferred over the Janssen COVID-19 vaccine. However, the Janssen vaccine may be offered in some situations . View Interim Clinical Considerations for Use of COVID-19 Vaccines and COVID-19 Vaccines for Moderately or Severely Immunocompromised People for details. Schedule is subject to change.				
California COVID-19 Vaccination Program				IMM-1396 (2/18/22)

Hospitalizations of Children and Adolescents with Laboratory-Confirmed COVID-19 –COVID-NET, 14 States, July 2021-January 2022

FIGURE. Weekly COVID-19–associated hospitalization rates* among children and adolescents aged 0–17 years, by age group — COVID-NET, 14 states,† July 3, 2021–January 22, 2022



Abbreviation: COVID-NET = Coronavirus Disease 2019–Associated Hospitalization Surveillance Network.

* Number of patients with laboratory-confirmed COVID-19–associated hospitalizations per 100,000 population; rates are subject to change as additional data are reported.

† COVID-NET sites are in the following 14 states: California, Colorado, Connecticut, Georgia, Iowa, Maryland, Michigan, Minnesota, New Mexico, New York, Ohio, Oregon, Tennessee, and Utah. Starting the week ending December 4, 2021, Maryland data are removed from weekly rate calculations.

- Hospital and ICU admission rates higher during Omicron than during Delta
- Peak hospitalization rates during Omicron were 4 times the Delta-peak rate among children of all ages and almost 5 times higher among children aged 0-to-4 years
- During the Omicron period, the monthly hospitalization rate among unvaccinated adolescents was 6 times that of vaccinated.

Effectiveness of Maternal Vaccination with COVID-19 Vaccine During Pregnancy Against Infant Hospitalization, July 2021-January 2022

TABLE 3. Effectiveness* of maternal 2-dose primary mRNA COVID-19 vaccination against COVID-19-associated hospitalization in infants aged <6 months, by timing of maternal vaccination during pregnancy† — 20 pediatric hospitals, 17 states,§ July 2021–January 2022

Timing of maternal vaccination during pregnancy†	No. vaccinated¶/Total (%)		Vaccine effectiveness,* % (95% CI)
	Case-infants	Control-infants	
Any time	28/176 (15.9)	65/203 (32.0)	61 (31 to 78)
Early (first 20 weeks)	17/165 (10.3)	26/164 (15.9)	32 (–43 to 68)
Late (21 weeks' gestation through 14 days before delivery)	9/157 (5.7)	38/176 (21.6)	80 (55 to 91)

Completion of vaccine primary series during pregnancy protects against infant COVID-19 hospitalization.



COVID-19 vaccination* among pregnant people is associated with

60%
↓

about 60% reduced risk of COVID-19 hospitalization in babies younger than 6 months old

People who are pregnant, may become pregnant, or are breastfeeding should get vaccinated against COVID-19

 bit.ly/MMWR7107e3 Test-negative, case-control study among infants at 20 pediatric hospitals in 17 states during July 1, 2021-January 17, 2022 **MMWR**

* Completed a 2-dose primary mRNA COVID-19 vaccination series during pregnancy (dose 1 before pregnancy and dose 2 during, or both doses during)

Provider Office Hours Q&A

During today's session, please use the Q&A panel to ask your questions so our subject matter experts can respond directly.



Storage & Handling

Kate McHugh, CDPH

Provider Concern: Vaccine Wastage

Never miss a COVID-19 vaccination opportunity!

- Concern: Wasting vaccines, especially if a vial is punctured to vaccinate a single patient.
- Response: **Vaccine wastage is expected, may be unavoidable, and will increase as vaccine rollout continues** because
 - more providers, including smaller provider sites, are now receiving vaccine;
 - vaccine continues to be available only as multi-dose vials; and
 - vials must often be punctured without using the full number of doses printed on the label.

CDC Guidance: Vaccinate every eligible person who presents at a vaccination site—even if it means puncturing a vial at the end of the day.

- Avoid missed opportunities for vaccination
- Vaccinate family members or friends who accompany patients to medical visits even if they are not established patients at the practice.
- Follow clinical best practices to maximize vaccination
 - Assess immunization status at every visit
 - Make a strong recommendation for immunization

Janssen Vaccine Shelf-Life Extension

- CDPH has not heard any updates yet, but the amendment was submitted to FDA and is waiting approval
- Extension would add an additional 1.5 to 5 months to the shelf life.
- For J&J vaccine expiring soon, please hold on to it!

Update: Moderna Smaller Vials

- Moderna plans to make smaller vials!
- Will be 5 doses per vial
- They may start shipping in April
- Should reduce waste and help smaller providers

Vaccine Management

Eric Norton, My Turn and Maria Volk, CDPH

Immunocompromised Booster Timeline System Update



To reflect the updated guidance, there was an additional question regarding immunocompromised status and a checkbox to confirm the timeline when accepting a Walk-In appointment that went live on February 23rd.

See the updated timeline for those moderately or severely immunocompromised below.

Vaccine	Vaccination Schedule			
Pfizer-BioNTech (ages 5 years and older)	1 st dose	2 nd dose (21 days after 1 st dose)	3 rd dose (at least 28 days after 2 nd dose)	Booster dose* (at least 3 months after 3 rd dose)
Moderna (ages 18 years and older)	1 st dose	2 nd dose (28 days after 1 st dose)	3 rd dose (at least 28 days after 2 nd dose)	Booster dose* (at least 3 months after 3 rd dose)
Janssen (ages 18 years and older)	1 st dose	Additional dose† (at least 28 days after 1 st dose)		Booster dose* (at least 2 months after additional dose)

*Any COVID-19 vaccine can be used for the booster dose in people ages 18 years and older, though mRNA vaccines are preferred. For people ages 12–17 years, only Pfizer-BioNTech can be used. People ages 5–11 years should not receive a booster dose.
†Only Pfizer-BioNTech or Moderna COVID-19 Vaccine should be used

* Which dose is this?

Booster

* Which vaccine did the patient receive for their primary series?

If the patient received a mix of international vaccine brands for their primary series, please reference the CDC guidance for [international vaccines](#).

☐ Johnson & Johnson

☒ Moderna

☐ Pfizer

☐ WHO-EUL approved vaccine

☐ Non-WHO-EUL approved vaccine

* Is the patient immunocompromised?

☒ Yes

☐ No

Additional doses have been prioritized for moderately to severely immunocompromised people. This includes people who have:

- Been receiving active cancer treatment for tumors or cancers of the blood
- Received an organ transplant and are taking medicine to suppress the immune system
- Received a stem cell transplant within the last 2 years or are taking medicine to suppress the immune system
- Received CAR-T-cell therapy, hematocrit therapy (HCT)
- Moderate or severe primary immunodeficiency (such as DiGeorge syndrome, Wiskott-Aldrich syndrome)
- Advanced or untreated HIV infection
- Active treatment with high-dose corticosteroids or other drugs that may suppress your immune response

☐ Confirmed patient completed their primary series at least 3 months ago for immunocompromised patients.

Moderna Doses for WHO EUL Approved Vaccine

- ✓ The My Turn system was updated on February 23rd such that those who received a WHO EUL approved vaccine can receive Moderna doses.

Appointment Details

* Clinic Name ⓘ
ABC Clinic

* Which dose is this? ⓘ
Second Dose

* Which vaccine did the patient receive for their primary series?
If the patient received a mix of international vaccine brands for their primary series, please reference the CDC guidance for international vaccines.

☐ Moderna
☐ Pfizer
☒ WHO-EUL approved vaccine
☐ Non-WHO-EUL approved vaccine

* ☒ Confirmed patient received last dose of vaccine at least 28 days ago.

* Vaccine Brand ⓘ
--None--
--None--
Pfizer
Moderna

Date Time
Feb 18, 2022 9:13 AM

Uploading Mass Doses



Reminder that the Bulk Upload feature in My Turn can only accept **50 appointments maximum** at one time in each file.

The screenshot displays the myCAvax California Vaccine Management System interface. The top navigation bar includes links for Home, Clinics, Vaccine Inventory, Appointments, Add Walk-In Appointment, and a More menu. The More menu is open, showing options like Bulk Walk-In Upload, Manage Users, Reports, Intraday Report, Knowledge Center, Communication, and Coded Clinics. The main content area features a 'Need Help?' message, a 'Download template' button, and a 'Choose File' button. Below these are instructions on how to bulk upload walk-in appointments, including steps for downloading the template, updating details, exporting as a UTF-8 CSV, and uploading the file. A 'Please Note' section provides additional guidelines. At the bottom, there is a 'Bulk Upload Requests Last 7 Days' section showing 0 records, refreshed at 9:31:01 AM, with a table header for Request ID, Created Time, Status, Uploaded File, Success File, and Error File.

myCAvax
California Vaccine Management System

Home Clinics Vaccine Inventory Appointments Add Walk-In Appointment More

Need Help? Please see the VA/VAA Bulk Upload Walk-In Appointments Quick Sheet.

Choose File Upload File Download template

Steps on how to bulk upload walk-in appointments:

1. Download the template file for bulk walk-in appointments in the article by clicking "Download Template."
2. Update walk-in details as per the template. One appointment is uploaded per row, and you can upload both pending and completed appointments within the same sheet.
3. Once you are done inputting the information, please export the file as a UTF-8 CSV.
4. Click the Choose File and select the file that you exported in step #3.
5. Click on Upload File button, the result of the file upload will be shown after the records are created. Please note that this may take a while depending on the size of your file.

Please Note:

1. Ensure that your inputted data fits the validation in the downloaded template file.
2. If any information is incorrect or missing, and error will be thrown and the appointment will not be uploaded into the system.
3. Avoid any special characters in address or any other information.
4. Ensure the clinic hours and vaccine administrator are valid.
5. For patients who are 18 or below all guardian information fields are mandatory.

Bulk Upload Requests
Last 7 Days

0 records • Refreshed at 9:31:01 AM

Request ID	Created Time	Status	Uploaded File	Success File	Error File
------------	--------------	--------	---------------	--------------	------------

Need help? View our jobs aids in the Knowledge Center, or contact us.

Release 23 Update



Release 23 did not go live yesterday.

Please stay tuned for an updated date for Release 23.

Release 23: Brand-New Vaccine Ordering Screen

With Release 23, Providers will notice updates to the Vaccine Order Screen to improve the Ordering process.



EASY ACCESS TO HELPFUL INFORMATION

- ✓ Inventory information will start populating from **VaccineFinder**. Remember to continue updating inventory information every day!



SAVE TIME WITH FEWER CLICKS

- ✓ You will be able to request **multiple products** at once without distinguishing a Small or Standard Order.
- ✓ Use the Order Increment values to guide you on how much product to order.



OPT-OUT OF ANCILLARY KITS

- ✓ **Opt-Out of Ancillary Kits** will be available for products in both Small and Standard Orders. Providers cannot Opt-Out of Ancillary Kits for Pfizer products.

What's Next on myCAvax: Release 23*

Changes for Providers

There will be major updates to the Vaccine Order Review screen for all Providers.

1 Need help? Review the job aid(s) for [placing vaccine order requests](#), [COVID-19 product guide](#), [reporting to VaccineFinder](#), and [shipping cadence](#).

* Account
Q Enter Search Key

2 Step 1: Provide Inventory, Administered and Request Vaccine
Review your Reported Inventory that is automatically pulled from the latest data in VaccineFinder every morning at 9am PST. If the values below are incorrect, update your data at the [VaccineFinder](#) website and remember to report to VaccineFinder daily. Then enter details for your On-Hand Inventory and Doses Administered (since last order), and utilize this information to estimate how much vaccine you need to order.

Reported Inventory (VaccineFinder)

* Vaccine product	Quantity	Last updated
Janssen (18 years - 100+ years) - 100/2 boxes of 50 - COVID-19 Vaccine		

On-hand Inventory

* Lot number	* Quantity	* Expiration / Beyond use date	* Quantity
--------------	------------	--------------------------------	------------

Doses administered

* Quantity

Order size

Order increments	* Doses requested
------------------	-------------------

3 Step 2: Order review
Review your order, and provide any additional information required for processing your order.

4 Standard order details

Product	Doses Requested	Intended Use	Ancillary Kits
Moderna (18 years - 100+ years) - 100/1 box of 10 - COVID-19 Vaccine	100	Booster	Opt-In
Moderna (18 years - 100+ years) - 140/1 box of 10 - COVID-19 Vaccine	140	Booster	Opt-In

Small order details

Product	Doses Requested	Intended Use	* Date needed by	Ancillary Kits	Temperature preference	* Delivery Method	Shipping Container
Pfizer (5 years - 11 years) - 100/box - COVID-19 Vaccine	10	Booster		Opt-In	None	Select an Option	Select an Option

Comments (Optional)
Additional comments or notes about your order

Previous Save as draft Submit

The new interface features...

1. Links to **updated product guides** and **job aids**.
2. Inventory information populating from **VaccineFinder**.

Providers can...

3. Request multiple products at once without distinguishing a Small or Standard Order.
4. Opt-out of ancillary kits for Standard and Small Orders (except Pfizer).

myCAvax Maya – The New Vaccine Order Request Screen



The screenshot shows the myCAvax web application interface for a "New Vaccine Order Request". The top navigation bar includes links for Home, Organization, Locations, Orders, and Vaccine Inventory. Below the header, there's a section for "Need help? Review the job aids for COVID-19 product guides, reporting to VaccineFinder, and shipping cadence." and a search bar for the account "Kern Medical HQ Location".

The main content area is titled "Step 1: Inventory and order size" and includes instructions: "Review your Reported Inventory that is automatically pulled from the latest data in VaccineFinder every morning at 5am PST. If the values below are incorrect, update inventory at the VaccineFinder website and remember to report to VaccineFinder daily. Then enter details for your Doses Administered (since your last order) and On-hand Inventory, and utilize this information to estimate how much vaccine you need to order."

Below the instructions is a table with tabs for "Reported Inventory (VaccineFinder)", "On-hand Inventory", "Doses administered", and "Order size". The "Reported Inventory (VaccineFinder)" tab is active, showing a table with columns: Vaccine product, Quantity, Last updated, Lot number, Quantity, Expiration / Beyond use date, Qty since last order, Recommended order size, Order increments, and Doses requested.

Vaccine product	Quantity	Last updated	Lot number	Quantity	Expiration / Beyond use date	Qty since last order	Recommended order size	Order increments	Doses requested
Moderna 100	20	12/01/2023	EW0567	56	10/29/23	300	300	100 (-100) 10 (-100)	100
Pfizer 5-11	70	12/13/2023	Lot number	Qty	Exp date	Doses admin	300	100 (-100) 10 (-100)	0
Pfizer 12+	3000	12/13/2023	EW0567	56	10/29/23	300	300	1170 (-1170) 6 (-1170)	200

Below the table, a yellow box contains the text: "The new Vaccine Ordering screen helps Maya save time when ordering multiple products. On the screen, she can view all products, select the desired quantity, and view other helpful fields when ordering such as 'Order Increments' field which displays the dose increments for Small and Standard Orders for each product."



Using VaccineFinder Data in myCAvax



Providers should update vaccine inventory information once a day in **VaccineFinder**.



Inventory data from **VaccineFinder** populates on the Vaccine Order Review page in myCAvax.



VaccineFinder information refreshes in myCAvax at 9 am PST every day.



Your LHDs/MCEs will use this information when reviewing and approving orders to determine need.

VaccineFinder Data Reporting



When Reporting to VaccineFinder, always remember to use the correct NDC code. Incorrect NDC codes or NDC codes for outdated product will cause the data to not populate properly in myCAvax.



If you experience issues with your VaccineFinder data in myCAvax please reach out to CDPH covidcallcenter@cdph.ca.gov. We can work with Providers to see screenshots and ensure the data is updated properly.

APPENDIX

What's Next on myCAvax: Release 23

Multi-Line Ordering

- ✓ A button will be added to bring a draft Order, with all products in that order, back to the Multiline interface for ease of submitting the full Order.
- ✓ The Order screen will dynamically display Order Increment values based on whether the product is available for Standard, Small, or both types of orders.
- ✓ New Ordering interface will give Providers the ability to Order multiple products in one transaction.

Small/Standard Orders

- ✓ Vaccine Order Review Screen will be updated to include the Most Recent Inventory field for reference for LHD/MCE users.

Site Visits

- ✓ LHDs/MCEs will be able to view a Site Visits tab with information regarding Quality Assurance Site Visits conducted by CDPH for their Providers.
- ✓ LHDs/MCEs will have a shell created for entry of their own Site Visits.

Reports

- ✓ Tiles for several reports will be added to the LHD dashboard.
- ✓ Vaccine Finder Inventory fields will be added to Order reports.

myCAvax – Known Issues - *Updated 2/17*



Known Issues

Changing the Status of a Transfer in 'Rejected'/'Accepted' Status

- ✓ We will implement a process that allows for Rejected/Accepted transfers to be re-reviewed to a different status.

Org Coordinators Missing from Related Contacts on a Provider Location

- ✓ We will address an issue that allows for some Community Users to not be able to see all of their Location's Waste Events and Shipments



Workaround/Next Steps

- ✓ Fix: 2/24/2022
 - ✓ Providers will need to contact the CDPH Helpdesk at COVIDCallCenter@cdph.ca.gov or by calling (833) 502-1245, if they would like to change the status on their previously-reviewed transfer.
-
- ✓ Fix: 2/24/2022

Wrap-up

Leslie Amani, CDPH

Additional Support

Type of Support

Description

Updated 12.29.21



COVID-19 Provider Call Center

The COVID-19 Call Center for Providers and Local Health Departments is dedicated to medical providers in California and their COVID-19 response, specifically addressing questions about State program requirements, enrollment, and vaccine distribution, including the Vaccine Marketplace.

- Email: covidcallcenter@cdph.ca.gov
- Phone: (833) 502-1245, Monday through Friday from 8AM–6PM



Enrollment Support

For Provider enrollment support, please contact myCAvax Clinic Operations at

- Email: myCAvaxinfo@cdph.ca.gov



myCAvax Help Desk

Dedicated staff provide up-to-date information and technical support on the myCAvax system.

- Email: myCAvax.HD@Accenture.com
- Phone: (833)-502-1245, option 3, Monday through Friday 7AM–7PM, Saturday and Sunday 8AM-1PM

For training opportunities: <https://eziz.org/covid/education/>



My Turn Clinic Help Desk

For **onboarding support** (those in the process of onboarding): myturnonboarding@cdph.ca.gov

For **technical support** with My Turn Clinic for COVID-19 and flu vaccines: MyTurn.Clinic.HD@Accenture.com or (833) 502-1245, option 4: Monday through Friday 7AM–7PM, Saturday and Sunday 8AM–1PM.

For job aids, demos, and training opportunities: flu at <https://eziz.org/covid/myturn/flu/> and COVID at <https://eziz.org/covid/myturn/>



Archived Communications

For archived communications from the COVID-19 Provider Call Center about the California COVID-19 Vaccination Program visit

- Website: [EZIZ Archived Communications](#)

Hear it? Clear It.

If you see or hear of any vaccine-related rumors within the communities you serve, share them with our Trust and Safety team via the CDPH Rumors Inbox.



Trust and Safety Team

Our shared mission is to reduce COVID-19 vaccine hesitancy and increase vaccination across the State of California.



How You Can Help

You are critical in our effort to provide Californians accurate and timely information around COVID-19 vaccination.



Monitor What You See and Hear

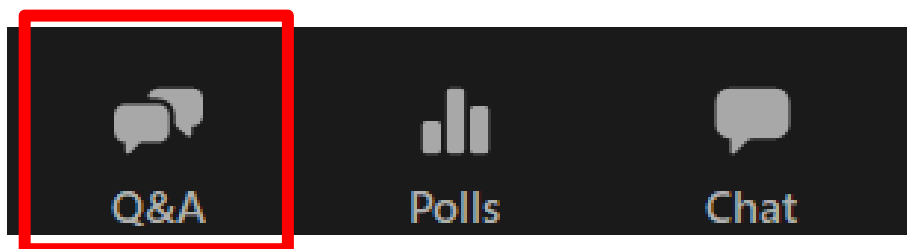
Monitor online media and what you hear in your local communities for potential rumors and inaccurate information.

If found, **report** it to **rumors@cdph.ca.gov**

[Contact](#)

Provider Office Hours Q&A

During today's session, please use the Q&A panel to ask your questions so our subject matter experts can respond directly.



Thank you!



Monday:

My Turn myCAvax Office Hours
Zoom Link

Next session: Monday, February 28, at
12:00 PM

Friday:

Provider Office Hours

Next session: Friday, March 4 at 9AM

Audio Conference: Register to access

Session Password: Immunize!

Thank you to Provider Office Hours' Planning Team: Leslie Amani, Rachel Jacobs, Hailey Ahmed, Blanca Corona, and Reva Anderson.