

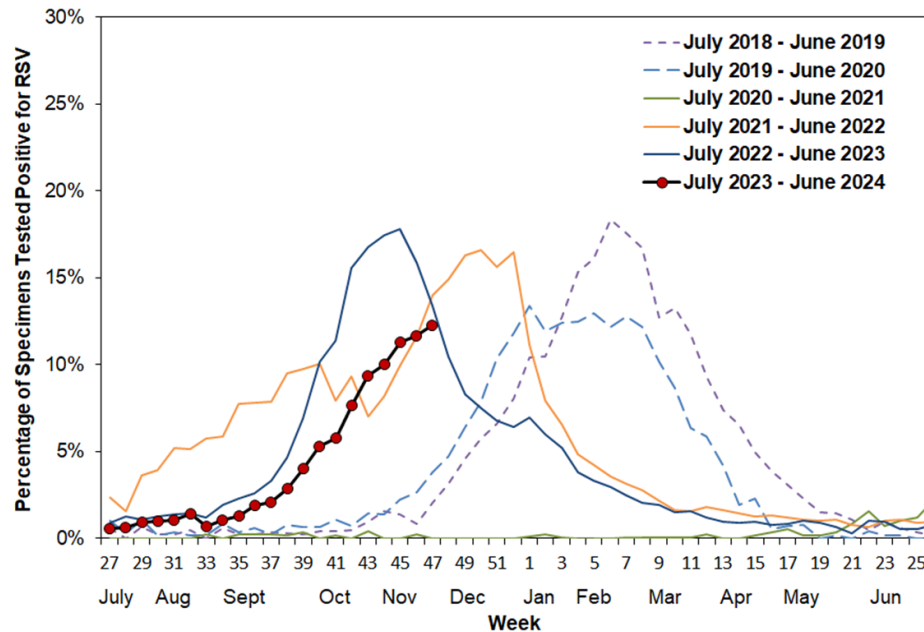


December 1, 2023

Important: Respiratory syncytial virus (RSV) activity is increasing in California. Order Limited Nirsevimab (Beyfortus™) Doses Prior to December 12 to Receive Product Before the Holidays

Dear VFC Provider,

RSV season is here, with more than [12.2% of respiratory specimens in California testing positive for RSV during the week ending November 25th, 2023](#), and peak activity expected soon.



Note: Data have been shifted so that week 1 aligns across years.

The holidays are coming up and now is the time to protect your most vulnerable patients. If your practice sees young or vulnerable infants and have not yet ordered nirsevimab (Beyfortus™), order now to protect as many patients as possible with the limited VFC supplies available, following CDC's [Interim CDC Recommendations to Protect Infants from Respiratory Syncytial Virus \(RSV\) during the 2023–2024 Respiratory Virus Season](#), given limited availability of nirsevimab in the US.

Ordering Tips:

- ✓ All VFC providers may order 50mg and 100 mg doses of nirsevimab (Beyfortus™) in limited

quantities. Keep in mind doses approved will be based on ordering history of index routine infant vaccines (hepatitis B vaccine birth doses for hospitals, first doses of pneumococcal conjugate vaccine for all other providers).

- ✓ Providers who have previously requested and received nirsevimab may request additional doses. Keep in mind nirsevimab re-orders will be approved based on usage and on-hand inventory of nirsevimab, as well as available supply.
- ✓ **To facilitate rapid processing, please submit an order solely for nirsevimab, and submit your request for other routine immunizations separately.**
- ✓ **Order by December 12 to ensure the immunization is delivered before the holiday shipping blackout dates.**
- ✓ Current limits and eligibility are subject to change based on supply.

Once immunizations are received, please make sure doses administered are reported to CAIR, following the appropriate VFC Eligibility. VFC doses must only be administered to VFC-eligible patients. Borrowing is not allowed.

The following resources can help your practice ensure prioritization of high-risk populations in light of limited nirsevimab supply: [IMM-1480 Nirsevimab \(Beyfortus\) Guide to Prevent Severe RSV in Infants and Toddlers \(eziz.org\)](#).

Thank you,



California Department of Public Health | Immunization Branch
Vaccines for Children (VFC) Program
850 Marina Bay Parkway
Richmond, CA 94804
Phone: 877-2GET-VFC (877-243-8832)
Fax: 877-FAXX-VFC (877-329-9832)
Email: MyVFCVaccines@cdph.ca.gov

EZIZ.org