

2012- 2013 KINDERGARTEN IMMUNIZATION ASSESSMENT RESULTS
CALIFORNIA DEPARTMENT OF PUBLIC HEALTH, IMMUNIZATION BRANCH

Introduction

The annual kindergarten assessment is conducted each fall to monitor compliance with the California School Immunization Law. Results from this assessment are used to measure immunization coverage among students entering kindergarten. This report presents results from this year’s kindergarten assessment and the attached tables present comparisons of immunization coverage in kindergarten schools by county.

Methods and Participants

This year’s kindergarten assessment was conducted in 8,220 of California’s schools with kindergartens. School staff complete assessment reports and return them to local health departments and the Immunization Branch.

Results and Discussion

Table 1 shows the results from this fall’s kindergarten assessment for the state as a whole and by school type. This year 90.3% of the 530,418 students enrolled in reporting kindergartens received all required immunizations (4+ DTP, 3+ Polio, 2+ MMR, 3+ Hep B, and 1+ Var or physician-documented varicella disease). There were 915 (0.17%) students with permanent medical exemptions and 14,791 (2.79%) students with personal beliefs exemptions. Immunization coverage was above 92% for each vaccine for all schools.

Table 1: Kindergarten Immunization Assessment, 2012-2013*

	All	Public	Private
Number of Schools	8,220	5,865	2,355
Number of Students	530,418	482,963	47,434
All Required Immunizations	90.3%	90.8%	85.8%
Conditional Entrants	6.8%	6.6%	8.8%
Permanent Medical Exemptions	0.17%	0.16%	0.27%
Personal Belief Exemptions	2.79%	2.55%	5.20%
4+ DTP	92.5%	93.0%	88.9%
3+ Polio	92.5%	92.9%	89.2%
2+ MMR	92.7%	93.2%	88.2%
3+ Hep B	95.2%	95.5%	92.7%
1+ Vari (or physician-documented disease)	95.6%	95.9%	92.7%

*Individual antigen status is unavailable for students with Personal Beliefs Exemptions. Therefore, individual antigen immunization coverage may be underestimated; anecdotal evidence suggests a small percentage of students may have some but not all required immunizations.

Compared with private schools, public schools had a higher percentage of students with all required immunizations (Figure 1) as well as students adequately immunized for each vaccine (Figure 2). This year, the highest percentages of students were up-to-date for the 1 dose varicella requirement followed by the 3 dose Hepatitis B series. The percentage of students up-to-date for each of the series, 4+DTP, 3+Polio and 2+MMR, were similar this year in all reporting schools.

Figure 1: Percentage of California Kindergarten Students with All Required Immunizations by School Type

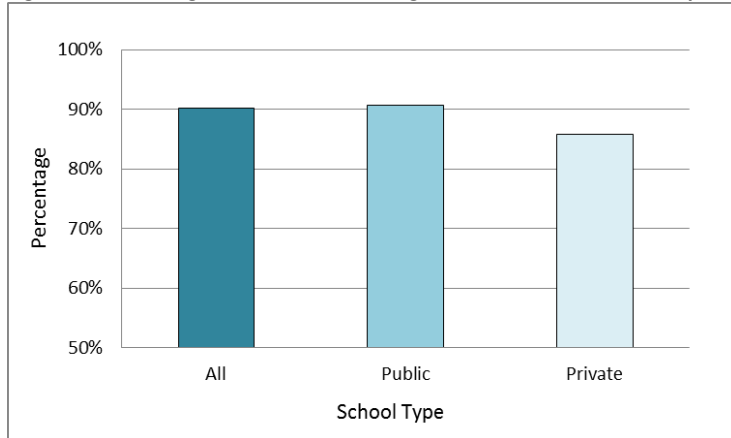
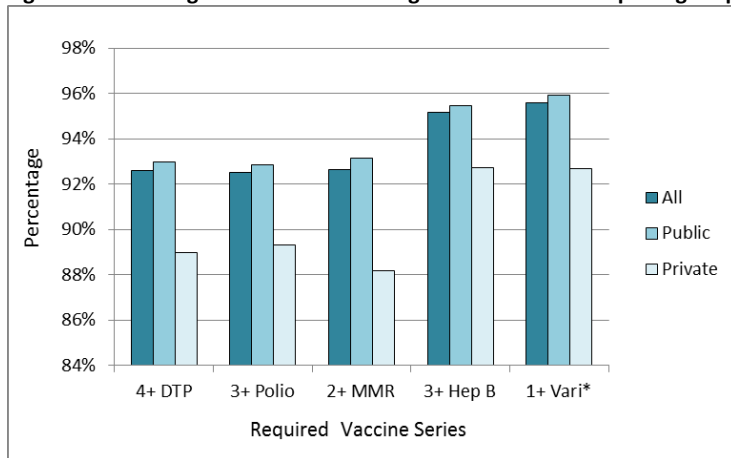


Figure 2: Percentage of California Kindergarten Students Completing Required Vaccine Series by School Type



*1 or more doses of varicella or physician-documented disease

In addition, compared with kindergarten students in private schools, those in public schools had a lower percentage of conditional entrants (Figure 3) as well as students with permanent medical exemptions (Figure 4) and personal beliefs exemptions (Figure 5). The percentage of conditional entrants public schools reported this year was 2% lower than private schools. The percentage of students with permanent medical exemptions public schools reported was 0.11% lower than in private schools. The percentage of students with personal beliefs exemptions public schools reported was 2.65% lower than in private schools.

Figure 3: Percentage of Conditional Entrants Among California Kindergarten by School Type

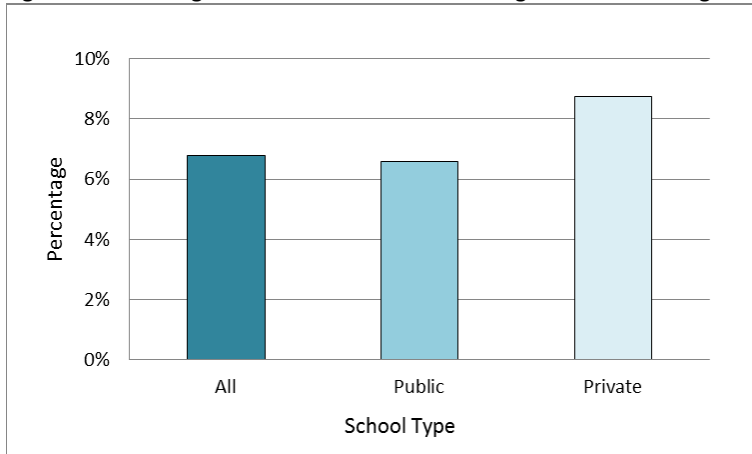


Figure 4: Percentage of California Kindergarten Students with a Permanent Medical Exemption by School Type

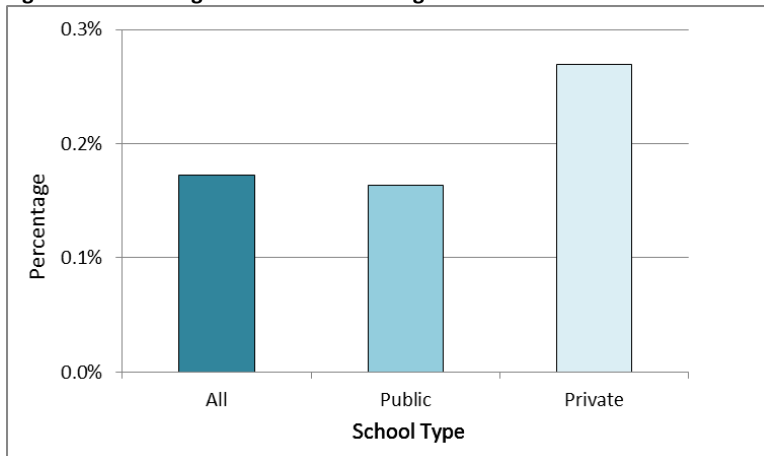
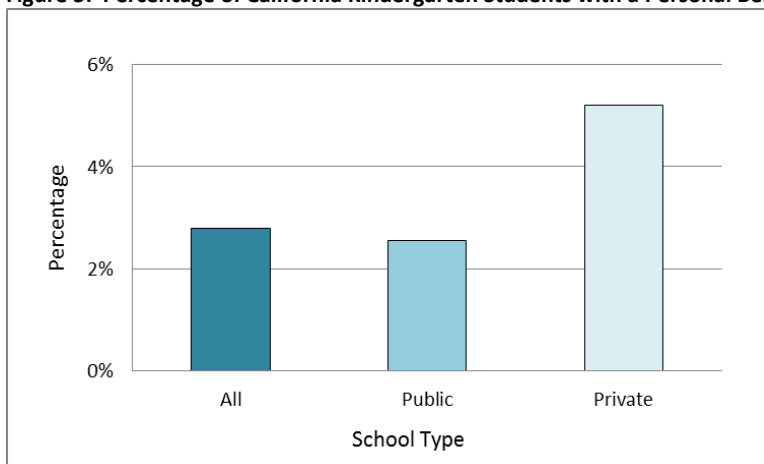
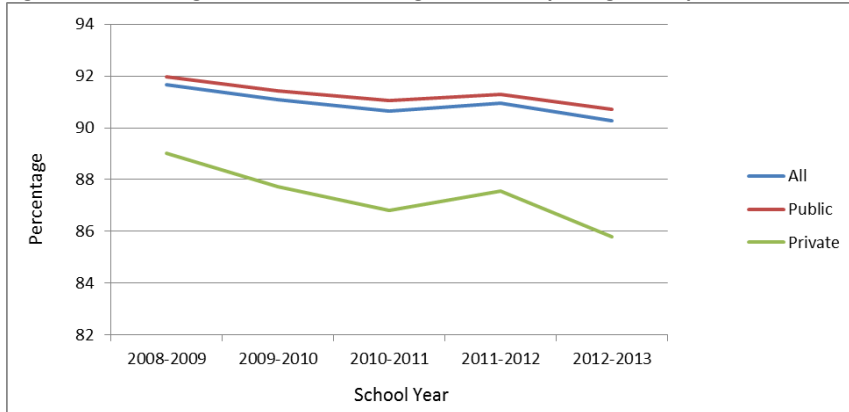


Figure 5: Percentage of California Kindergarten Students with a Personal Beliefs Exemption by School Type



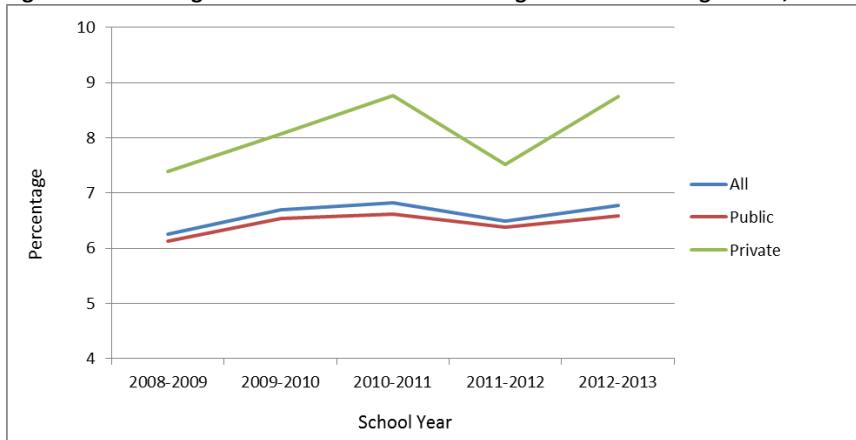
Over the past five years, students with all required immunizations in all reporting schools has decreased slightly from 91.7% in the 2008-09 school year to 90.3% in the 2012-13 school year (Figure 6). Public schools consistently reported having a higher percentage of students with all required immunizations compared with private schools, ranging from 2.5% higher in the 2008-09 school year to 4.9% higher in the 2012-13 school year.

Figure 6: Percentage of California Kindergartners Completing All Required Immunizations, 2008-09 to 2012-13 School Year



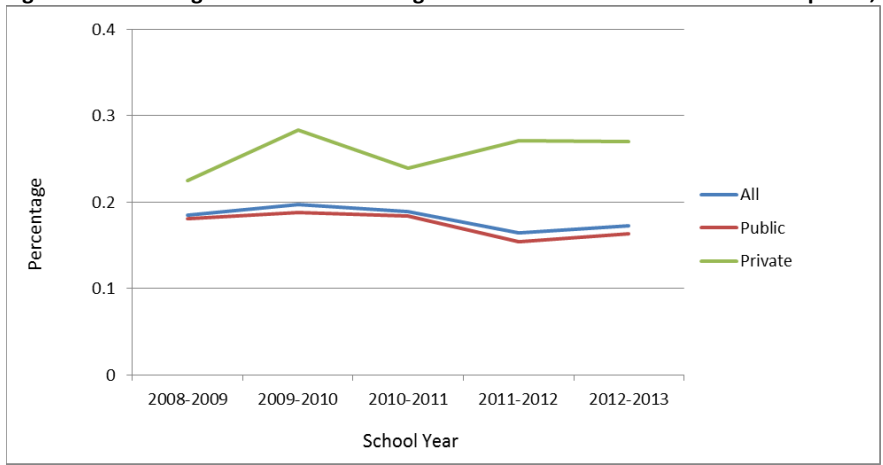
The percentage of conditional entrants has increased slightly from 6.3% in the 2008-09 school year to 6.8% in the 2012-13 school year (Figure 7). Public schools reported having a lower percentage of conditional entrants than private schools.

Figure 7: Percentage of Conditional Entrants Among California Kindergartners, 2008-09 to 2012-13 School Year



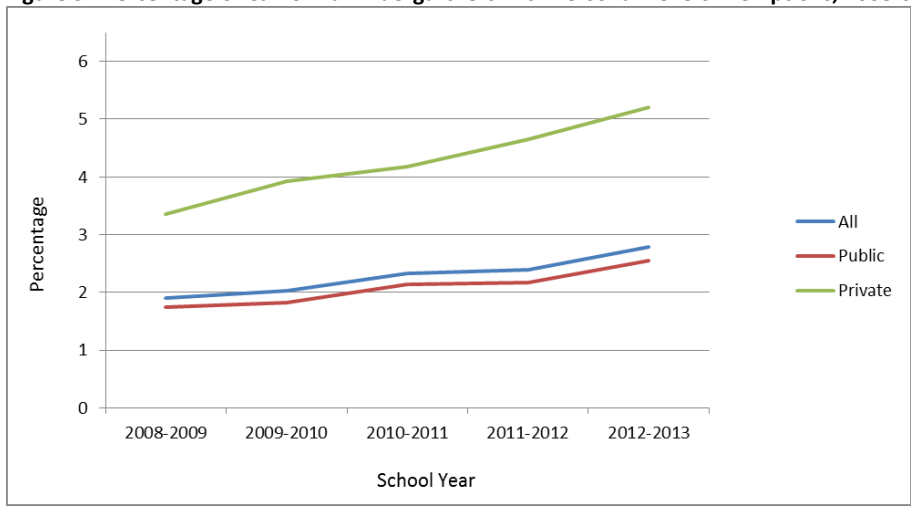
Over the past five years, the percentage of students with a permanent medical exemption has decreased slightly among all reporting schools (Figure 8). But, among private schools, the percentage receiving permanent medical exemptions has increased slightly from 0.22% in the 2008-09 school year to 0.25% in the 2012-13 school year.

Figure 8: Percentage of California Kindergartners with Permanent Medical Exemptions, 2008-09 to 2012-13 School Year



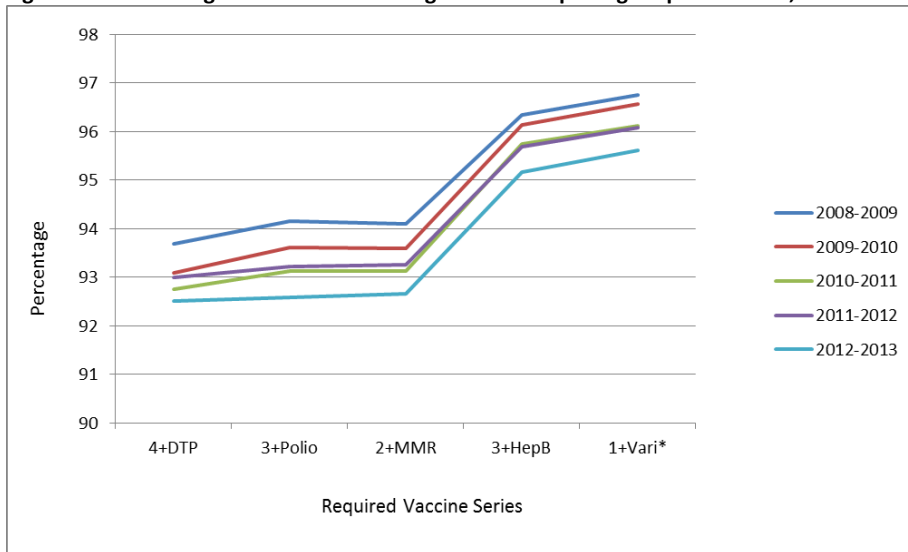
The percentage of students receiving a personal beliefs exemption has increased 0.9% since the 2008-09 school year among all reporting schools, from 1.9% to 2.8% this school year (Figure 9). Public schools have consistently reported a lower percentage of students with personal beliefs exemptions compared private schools; the gap has widened slightly from a 1.7% difference in the 2008-09 school year compared with 2.7% difference in the 2012-13 school year.

Figure 9: Percentage of California Kindergartners with Personal Beliefs Exemptions, 2008-09 to 2012-13 School Year



The percentage of students completing each of the required vaccine series has declined steadily since the 2008-09 school year (Figure 10). The immunization status of students completing the 1 dose varicella vaccine requirement has been on average 3% higher than students completing the 4 dose DTP series over the past five years. A similar percentage of students have tended to complete the 4 dose DTP series, the 3 dose Polio series and the 2 dose MMR series during the same school year.

Figure 10: Percentage of California Kindergartners Completing Required Series, 2008-09 to 2012-13 School Year



*1 or more doses of varicella or physician-documented disease

Description of Attached Tables

Enclosed is a full set of tables showing this year’s results. Table 2 shows total enrollment and admission status by county. Table 3 shows students adequately immunized for each vaccine by county. Table 4 shows the number of schools reporting by county and type (public or private).

For further information, please contact Teresa Lee at (510) 620-3746 or Teresa.Lee2@cdph.ca.gov or Kathleen Abanilla at (510) 620-3757 or Kathleen.Abanilla@cdph.ca.gov at the California Department of Public Health, Immunization Branch.

KINDERGARTEN ASSESSMENT - CALIFORNIA, 2012-2013

TABLE 2: TOTAL ENROLLMENT AND ADMISSION STATUS

BY COUNTY

	TOTAL STUDENTS	ENTRANTS WITH ALL REQ. IMMUN.		CONDITIONAL ENTRANTS		ENTRANTS WITH PME		ENTRANTS WITH PBE	
	NUMBER	NUMBER	PERCENT	NUMBER	PERCENT	NUMBER	PERCENT	NUMBER	PERCENT
STATE TOTAL	530,397	478,743	90.26%	35,948	6.78%	915	0.17%	14,791	2.79%
COUNTY									
ALAMEDA	19,433	16,951	87.23%	2,142	11.02%	19	0.10%	321	1.65%
ALPINE	19	16	84.21%	1	5.26%	0	0.00%	2	10.53%
AMADOR	285	258	90.53%	5	1.75%	0	0.00%	22	7.72%
BUTTE	2,663	2,343	87.98%	162	6.08%	5	0.19%	153	5.75%
CALAVERAS	404	316	78.22%	44	10.89%	1	0.25%	43	10.64%
COLUSA	408	395	96.81%	8	1.96%	2	0.49%	3	0.74%
CONTRA COSTA	14,713	13,781	93.67%	600	4.08%	10	0.07%	322	2.19%
DEL NORTE	301	258	85.71%	10	3.32%	0	0.00%	33	10.96%
EL DORADO	2,480	2,159	87.06%	115	4.64%	3	0.12%	203	8.19%
FRESNO	17,320	16,372	94.53%	680	3.93%	5	0.03%	263	1.52%
GLENN	401	389	97.01%	6	1.50%	0	0.00%	6	1.50%
HUMBOLDT	1,614	1,221	75.65%	206	12.76%	2	0.12%	185	11.46%
IMPERIAL	2,747	2,585	94.10%	155	5.64%	1	0.04%	6	0.22%
INYO	212	206	97.17%	1	0.47%	2	0.94%	3	1.42%
KERN	15,806	14,838	93.88%	572	3.62%	120	0.76%	276	1.75%
KINGS	2,516	2,447	97.26%	49	1.95%	1	0.04%	19	0.76%
LAKE	746	641	85.92%	62	8.31%	0	0.00%	43	5.76%
LASSEN	356	295	82.87%	35	9.83%	0	0.00%	26	7.30%
LOS ANGELES	132,142	115,779	87.62%	13,682	10.35%	194	0.15%	2,487	1.88%
MADERA	2,566	2,384	92.91%	121	4.72%	2	0.08%	59	2.30%
MARIN	3,449	2,829	82.02%	348	10.09%	2	0.06%	270	7.83%
MARIPOSA	137	109	79.56%	11	8.03%	1	0.73%	16	11.68%
MENDOCINO	1,136	916	80.63%	115	10.12%	6	0.53%	99	8.71%
MERCED	4,775	4,526	94.79%	195	4.08%	9	0.19%	45	0.94%
MODOC	115	106	92.17%	5	4.35%	0	0.00%	4	3.48%
MONO	147	136	92.52%	2	1.36%	2	1.36%	7	4.76%
MONTEREY	6,677	6,188	92.68%	380	5.69%	9	0.13%	100	1.50%
NAPA	1,738	1,629	93.73%	42	2.42%	0	0.00%	67	3.86%
NEVADA	869	580	66.74%	93	10.70%	1	0.12%	195	22.44%

KINDERGARTEN ASSESSMENT - CALIFORNIA, 2012-2013

TABLE 2: TOTAL ENROLLMENT AND ADMISSION STATUS

BY COUNTY

	TOTAL STUDENTS	ENTRANTS WITH ALL REQ. IMMUN.		CONDITIONAL ENTRANTS		ENTRANTS WITH PME		ENTRANTS WITH PBE	
	NUMBER	NUMBER	PERCENT	NUMBER	PERCENT	NUMBER	PERCENT	NUMBER	PERCENT
ORANGE	42,679	38,122	89.32%	3,136	7.35%	127	0.30%	1,294	3.03%
PLACER	5,577	4,756	85.28%	360	6.46%	7	0.13%	454	8.14%
PLUMAS	204	173	84.80%	12	5.88%	0	0.00%	19	9.31%
RIVERSIDE	34,198	32,078	93.80%	1,292	3.78%	36	0.11%	792	2.32%
SACRAMENTO	19,660	16,601	84.44%	2,160	10.99%	49	0.25%	850	4.32%
SAN BENITO	909	871	95.82%	30	3.30%	1	0.11%	7	0.77%
SAN BERNARDINO	32,275	30,354	94.05%	1,063	3.29%	37	0.11%	821	2.54%
SAN DIEGO	42,787	38,759	90.59%	2,305	5.39%	65	0.15%	1,658	3.88%
SAN FRANCISCO	6,733	6,004	89.17%	619	9.19%	17	0.25%	93	1.38%
SAN JOAQUIN	11,196	10,812	96.57%	263	2.35%	8	0.07%	113	1.01%
SAN LUIS OBISPO	3,045	2,691	88.37%	177	5.81%	4	0.13%	173	5.68%
SAN MATEO	9,574	8,779	91.70%	576	6.02%	18	0.19%	201	2.10%
SANTA BARBARA	5,978	5,506	92.10%	208	3.48%	9	0.15%	255	4.27%
SANTA CLARA	24,854	23,220	93.43%	1,154	4.64%	61	0.25%	419	1.69%
SANTA CRUZ	3,580	2,941	82.15%	286	7.99%	9	0.25%	344	9.61%
SHASTA	2,161	1,757	81.30%	219	10.13%	5	0.23%	180	8.33%
SIERRA	23	23	100.00%	0	0.00%	0	0.00%	0	0.00%
SISKIYOU	510	414	81.18%	33	6.47%	1	0.20%	62	12.16%
SOLANO	5,403	5,110	94.58%	201	3.72%	8	0.15%	84	1.55%
SONOMA	6,604	5,912	89.52%	271	4.10%	3	0.05%	418	6.33%
STANISLAUS	8,552	8,044	94.06%	154	1.80%	7	0.08%	347	4.06%
SUTTER	1,696	1,492	87.97%	54	3.18%	5	0.29%	145	8.55%
TEHAMA	913	847	92.77%	19	2.08%	2	0.22%	45	4.93%
TRINITY	113	91	80.53%	4	3.54%	0	0.00%	18	15.93%
TULARE	8,663	8,220	94.89%	330	3.81%	4	0.05%	109	1.26%
TUOLUMNE	489	366	74.85%	63	12.88%	0	0.00%	60	12.27%
VENTURA	12,173	10,841	89.06%	873	7.17%	28	0.23%	431	3.54%
YOLO	2,427	2,215	91.26%	122	5.03%	2	0.08%	88	3.63%
YUBA	1,246	1,091	87.56%	117	9.39%	5	0.40%	33	2.65%

KINDERGARTEN ASSESSMENT - CALIFORNIA, 2012-2013

TABLE 3: STUDENTS ADEQUATELY IMMUNIZED

BY COUNTY

	TOTAL STUDENTS	DTP 4+		POLIO 3+		MMR 1		MMR 2		HEP B 3+		VAR 1+	
	NUMBER	NUMBER	PERCENT	NUMBER	PERCENT	NUMBER	PERCENT	NUMBER	PERCENT	NUMBER	PERCENT	NUMBER	PERCENT
STATE TOTAL	530,397	490,637	92.50%	491,106	92.59%	508,008	95.78%	491,467	92.66%	504,728	95.16%	507,106	95.61%
COUNTY													
ALAMEDA	19,433	17,590	90.52%	17,561	90.37%	18,337	94.36%	17,943	92.33%	18,078	93.03%	18,252	93.92%
ALPINE	19	16	84.21%	16	84.21%	16	84.21%	16	84.21%	16	84.21%	16	84.21%
AMADOR	285	259	90.88%	259	90.88%	263	92.28%	258	90.53%	263	92.28%	263	92.28%
BUTTE	2,663	2,403	90.24%	2,392	89.82%	2,469	92.71%	2,386	89.60%	2,449	91.96%	2,463	92.49%
CALAVERAS	404	323	79.95%	326	80.69%	357	88.37%	326	80.69%	352	87.13%	353	87.38%
COLUSA	408	395	96.81%	396	97.06%	399	97.79%	396	97.06%	403	98.77%	399	97.79%
CONTRA COSTA	14,713	13,965	94.92%	13,970	94.95%	14,269	96.98%	14,026	95.33%	14,221	96.66%	14,260	96.92%
DEL NORTE	301	263	87.38%	260	86.38%	263	87.38%	262	87.04%	264	87.71%	264	87.71%
EL DORADO	2,480	2,191	88.35%	2,186	88.15%	2,259	91.09%	2,197	88.59%	2,251	90.77%	2,247	90.60%
FRESNO	17,320	16,541	95.50%	16,575	95.70%	16,918	97.68%	16,715	96.51%	16,855	97.32%	16,907	97.62%
GLENN	401	390	97.26%	391	97.51%	395	98.50%	393	98.00%	393	98.00%	395	98.50%
HUMBOLDT	1,614	1,283	79.49%	1,277	79.12%	1,386	85.87%	1,264	78.31%	1,362	84.39%	1,363	84.45%
IMPERIAL	2,747	2,642	96.18%	2,651	96.51%	2,734	99.53%	2,625	95.56%	2,729	99.34%	2,695	98.11%
INYO	212	206	97.17%	206	97.17%	207	97.64%	206	97.17%	206	97.17%	207	97.64%
KERN	15,806	15,070	95.34%	15,107	95.58%	15,343	97.07%	15,092	95.48%	15,263	96.56%	15,334	97.01%
KINGS	2,516	2,457	97.66%	2,471	98.21%	2,495	99.17%	2,474	98.33%	2,482	98.65%	2,494	99.13%
LAKE	746	662	88.74%	659	88.34%	688	92.23%	660	88.47%	681	91.29%	686	91.96%
LASSEN	356	301	84.55%	300	84.27%	321	90.17%	299	83.99%	320	89.89%	322	90.45%
LOS ANGELES	132,142	120,594	91.26%	120,657	91.31%	126,519	95.74%	120,413	91.12%	125,478	94.96%	126,465	95.70%
MADERA	2,566	2,422	94.39%	2,428	94.62%	2,493	97.16%	2,432	94.78%	2,473	96.38%	2,487	96.92%
MARIN	3,449	2,958	85.76%	2,939	85.21%	3,114	90.29%	2,991	86.72%	3,061	88.75%	3,088	89.53%
MARIPOSA	137	114	83.21%	117	85.40%	119	86.86%	112	81.75%	120	87.59%	117	85.40%
MENDOCINO	1,136	963	84.77%	943	83.01%	1,017	89.52%	967	85.12%	1,009	88.82%	1,003	88.29%
MERCED	4,775	4,595	96.23%	4,623	96.82%	4,699	98.41%	4,612	96.59%	4,678	97.97%	4,662	97.63%
MODOC	115	108	93.91%	107	93.04%	110	95.65%	108	93.91%	111	96.52%	110	95.65%
MONO	147	137	93.20%	137	93.20%	138	93.88%	136	92.52%	138	93.88%	138	93.88%
MONTEREY	6,677	6,323	94.70%	6,317	94.61%	6,517	97.60%	6,301	94.37%	6,470	96.90%	6,479	97.03%
NAPA	1,738	1,642	94.48%	1,644	94.59%	1,667	95.91%	1,640	94.36%	1,665	95.80%	1,662	95.63%
NEVADA	869	601	69.16%	595	68.47%	659	75.83%	599	68.93%	652	75.03%	644	74.11%

KINDERGARTEN ASSESSMENT - CALIFORNIA, 2012-2013

TABLE 3: STUDENTS ADEQUATELY IMMUNIZED

BY COUNTY

	TOTAL STUDENTS	DTP 4+		POLIO 3+		MMR 1		MMR 2		HEP B 3+		VAR 1+	
	NUMBER	NUMBER	PERCENT	NUMBER	PERCENT	NUMBER	PERCENT	NUMBER	PERCENT	NUMBER	PERCENT	NUMBER	PERCENT
ORANGE	42,679	39,255	91.98%	39,222	91.90%	40,870	95.76%	39,185	91.81%	40,627	95.19%	40,840	95.69%
PLACER	5,577	4,859	87.13%	4,870	87.32%	5,057	90.68%	4,845	86.87%	5,030	90.19%	5,042	90.41%
PLUMAS	204	181	88.73%	180	88.24%	183	89.71%	178	87.25%	182	89.22%	180	88.24%
RIVERSIDE	34,198	32,499	95.03%	32,571	95.24%	33,221	97.14%	32,609	95.35%	33,067	96.69%	33,189	97.05%
SACRAMENTO	19,660	17,133	87.15%	17,253	87.76%	18,531	94.26%	17,156	87.26%	18,368	93.43%	18,442	93.80%
SAN BENITO	909	877	96.48%	878	96.59%	895	98.46%	882	97.03%	889	97.80%	898	98.79%
SAN BERNARDINO	32,275	30,742	95.25%	30,838	95.55%	31,242	96.80%	30,852	95.59%	31,044	96.19%	31,234	96.77%
SAN DIEGO	42,787	39,543	92.42%	39,546	92.43%	40,749	95.24%	39,534	92.40%	40,472	94.59%	40,637	94.98%
SAN FRANCISCO	6,733	6,154	91.40%	6,122	90.93%	6,319	93.85%	6,265	93.05%	6,300	93.57%	6,287	93.38%
SAN JOAQUIN	11,196	10,898	97.34%	10,914	97.48%	11,039	98.60%	10,974	98.02%	11,032	98.54%	11,045	98.65%
SAN LUIS OBISPO	3,045	2,728	89.59%	2,733	89.75%	2,856	93.79%	2,727	89.56%	2,847	93.50%	2,829	92.91%
SAN MATEO	9,574	9,005	94.06%	8,982	93.82%	9,317	97.32%	8,971	93.70%	9,256	96.68%	9,305	97.19%
SANTA BARBARA	5,978	5,565	93.09%	5,570	93.17%	5,643	94.40%	5,621	94.03%	5,631	94.20%	5,641	94.36%
SANTA CLARA	24,854	23,630	95.08%	23,678	95.27%	24,165	97.23%	23,651	95.16%	24,065	96.83%	24,131	97.09%
SANTA CRUZ	3,580	3,051	85.22%	3,040	84.92%	3,178	88.77%	3,039	84.89%	3,143	87.79%	3,159	88.24%
SHASTA	2,161	1,810	83.76%	1,807	83.62%	1,944	89.96%	1,806	83.57%	1,927	89.17%	1,932	89.40%
SIERRA	23	23	100.00%	23	100.00%	23	100.00%	23	100.00%	23	100.00%	23	100.00%
SISKIYOU	510	417	81.76%	419	82.16%	438	85.88%	419	82.16%	436	85.49%	434	85.10%
SOLANO	5,403	5,160	95.50%	5,186	95.98%	5,298	98.06%	5,164	95.58%	5,264	97.43%	5,292	97.95%
SONOMA	6,604	5,996	90.79%	5,998	90.82%	6,125	92.75%	5,998	90.82%	6,086	92.16%	6,108	92.49%
STANISLAUS	8,552	8,069	94.35%	8,097	94.68%	8,194	95.81%	8,081	94.49%	8,186	95.72%	8,193	95.80%
SUTTER	1,696	1,506	88.80%	1,510	89.03%	1,537	90.63%	1,503	88.62%	1,533	90.39%	1,536	90.57%
TEHAMA	913	853	93.43%	852	93.32%	863	94.52%	856	93.76%	860	94.19%	864	94.63%
TRINITY	113	92	81.42%	92	81.42%	93	82.30%	94	83.19%	93	82.30%	93	82.30%
TULARE	8,663	8,310	95.93%	8,324	96.09%	8,526	98.42%	8,310	95.93%	8,477	97.85%	8,507	98.20%
TUOLUMNE	489	381	77.91%	378	77.30%	414	84.66%	378	77.30%	413	84.46%	410	83.84%
VENTURA	12,173	11,099	91.18%	11,115	91.31%	11,596	95.26%	11,122	91.37%	11,560	94.96%	11,574	95.08%
YOLO	2,427	2,263	93.24%	2,266	93.37%	2,320	95.59%	2,254	92.87%	2,291	94.40%	2,319	95.55%
YUBA	1,246	1,124	90.21%	1,132	90.85%	1,201	96.39%	1,121	89.97%	1,183	94.94%	1,187	95.26%

KINDERGARTEN ASSESSMENT - CALIFORNIA, 2012-2013

TABLE 4: NUMBER OF SCHOOLS REPORTING
BY COUNTY AND TYPE

	TOTAL NUMBER OF SCHOOLS	SCHOOL TYPE			
		PUBLIC		PRIVATE	
		NUMBER OF SCHOOLS	PERCENT OF TOTAL	NUMBER OF SCHOOLS	PERCENT OF TOTAL
STATE TOTAL	8,220	5,865	71.35%	2,355	28.65%
COUNTY					
ALAMEDA	332	214	64.46%	118	35.54%
ALPINE	1	1	100.00%	0	0.00%
AMADOR	7	6	85.71%	1	14.29%
BUTTE	60	47	78.33%	13	21.67%
CALAVERAS	12	11	91.67%	1	8.33%
COLUSA	6	5	83.33%	1	16.67%
CONTRA COSTA	223	154	69.06%	69	30.94%
DEL NORTE	11	10	90.91%	1	9.09%
EL DORADO	49	39	79.59%	10	20.41%
FRESNO	231	199	86.15%	32	13.85%
GLENN	12	11	91.67%	1	8.33%
HUMBOLDT	62	53	85.48%	9	14.52%
IMPERIAL	45	38	84.44%	7	15.56%
INYO	7	6	85.71%	1	14.29%
KERN	182	152	83.52%	30	16.48%
KINGS	38	31	81.58%	7	18.42%
LAKE	16	13	81.25%	3	18.75%
LASSEN	14	14	100.00%	0	0.00%
LOS ANGELES	1,937	1,279	66.03%	658	33.97%
MADERA	37	34	91.89%	3	8.11%
MARIN	77	46	59.74%	31	40.26%
MARIPOSA	8	7	87.50%	1	12.50%
MENDOCINO	34	29	85.29%	5	14.71%
MERCED	66	54	81.82%	12	18.18%
MODOC	7	5	71.43%	2	28.57%
MONO	6	5	83.33%	1	16.67%
MONTEREY	93	77	82.80%	16	17.20%
NAPA	42	24	57.14%	18	42.86%
NEVADA	25	21	84.00%	4	16.00%

KINDERGARTEN ASSESSMENT - CALIFORNIA, 2012-2013

TABLE 4: NUMBER OF SCHOOLS REPORTING
BY COUNTY AND TYPE

	TOTAL NUMBER OF SCHOOLS	SCHOOL TYPE			
		PUBLIC		PRIVATE	
		NUMBER OF SCHOOLS	PERCENT OF TOTAL	NUMBER OF SCHOOLS	PERCENT OF TOTAL
ORANGE	645	393	60.93%	252	39.07%
PLACER	98	78	79.59%	20	20.41%
PLUMAS	8	5	62.50%	3	37.50%
RIVERSIDE	402	293	72.89%	109	27.11%
SACRAMENTO	311	234	75.24%	77	24.76%
SAN BENITO	19	16	84.21%	3	15.79%
SAN BERNARDINO	462	350	75.76%	112	24.24%
SAN DIEGO	635	449	70.71%	186	29.29%
SAN FRANCISCO	145	75	51.72%	70	48.28%
SAN JOAQUIN	178	151	84.83%	27	15.17%
SAN LUIS OBISPO	60	47	78.33%	13	21.67%
SAN MATEO	175	109	62.29%	66	37.71%
SANTA BARBARA	100	76	76.00%	24	24.00%
SANTA CLARA	380	238	62.63%	142	37.37%
SANTA CRUZ	65	45	69.23%	20	30.77%
SHASTA	58	46	79.31%	12	20.69%
SIERRA	2	2	100.00%	0	0.00%
SISKIYOU	29	25	86.21%	4	13.79%
SOLANO	76	57	75.00%	19	25.00%
SONOMA	124	100	80.65%	24	19.35%
STANISLAUS	127	111	87.40%	16	12.60%
SUTTER	34	29	85.29%	5	14.71%
TEHAMA	24	23	95.83%	1	4.17%
TRINITY	11	11	100.00%	0	0.00%
TULARE	116	105	90.52%	11	9.48%
TUOLUMNE	19	14	73.68%	5	26.32%
VENTURA	208	141	67.79%	67	32.21%
YOLO	43	32	74.42%	11	25.58%
YUBA	26	25	96.15%	1	3.85%