

2013-2014 CHILD CARE ASSESSMENT RESULTS  
CALIFORNIA DEPARTMENT OF PUBLIC HEALTH, IMMUNIZATION BRANCH

**Introduction**

The annual child care assessment is conducted each fall to monitor compliance with the California School Immunization Law. Results from this assessment are used to measure immunization coverage among children entering licensed child care facilities. This report presents results from this year’s child care assessment and the attached tables present comparisons of immunization coverage in child care facilities by county.

**Methods and Participants**

This year’s child care assessment was conducted in 9,498 of California’s licensed child care facilities. Child care facility staff completed assessment reports and submitted them to local health departments and the Immunization Branch. The age group assessed is 2 years to 4 years, 11 months. Roughly one-third of children in this age group attend licensed child care facilities. The following data are only for children in licensed child care facilities that have reported and may not be representative of the entire population of California children in this age group.

**Results and Discussion**

A summary of results from the Fall 2013-14 child care assessment are found below (Table 1). This year, 89.3% of the 486,526 children enrolled in reporting child care facilities received all required immunizations (4+ DTP, 3+ Polio, 1+ MMR, 1+ Hib, 3+ Hep B, and 1+ Vari or physician-documented varicella disease). There were 1,402 (0.29%) children with permanent medical exemptions (PMEs) and 14,325 (2.94%) children with personal belief exemptions (PBEs). For all facilities, immunization coverage was greater than or equal to 93% for each vaccine.

**Table 1: Child Care Immunization Assessment, 2013-2014\***

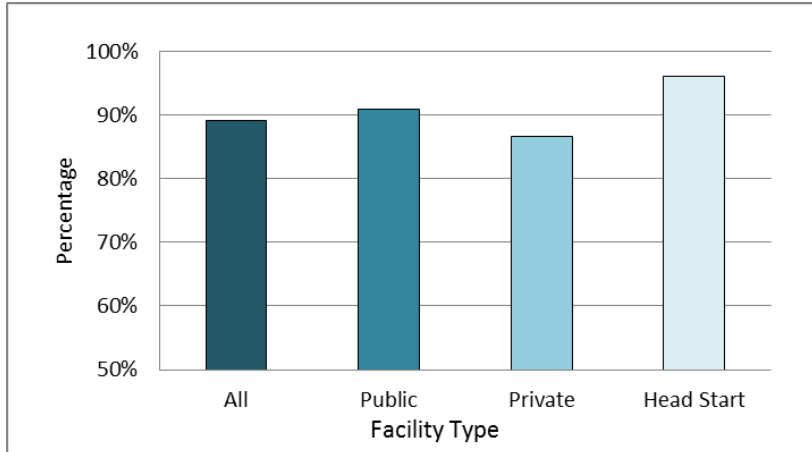
	All	Public	Private	Head Start
Number of Schools	9,498	2,209	5,866	1,423
Number of Students	486,526	110,924	299,773	75,829
All Required Immunizations	89.3%	90.7%	86.9%	96.3%
Conditional Entrants	7.5%	7.7%	8.6%	2.9%
Permanent Medical Exemptions	0.29%	0.24%	0.34%	0.15%
Personal Belief Exemptions	2.94%	1.37%	4.11%	0.63%
4+ DTP	93.8%	94.2%	92.6%	97.8%
3+ Polio	95.7%	96.5%	94.6%	98.9%
1+ MMR	95.7%	96.3%	94.7%	99.0%
1+ Hib	96.7%	96.3%	96.4%	98.6%
3+ Hep B	93.9%	95.4%	92.2%	98.6%
1+ Vari (or physician-documented disease)	95.1%	96.1%	93.8%	98.9%

\*Individual antigen status is unavailable for students with Personal Beliefs Exemptions. Therefore, individual antigen immunization coverage may be underestimated; anecdotal evidence suggests a small percentage of students may have some but not all required immunizations.

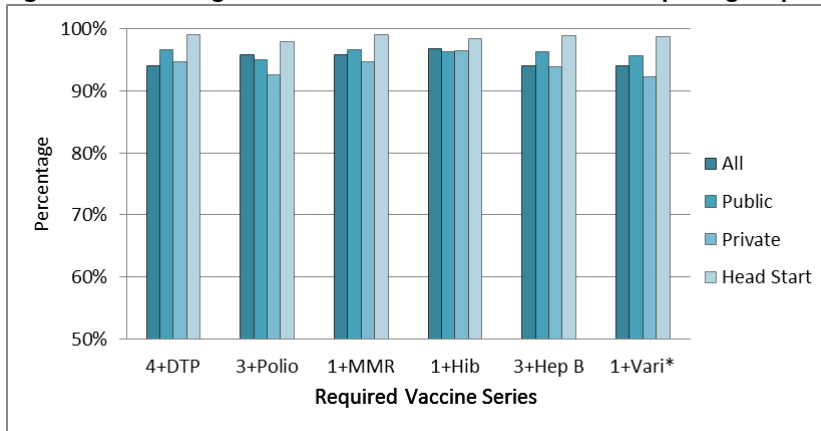
\*\*Conditional Entrant is a student who does not meet all requirements. This student must be followed up because he/she: lacks (i.e., is not yet due for) at least one dose and does not have a personal beliefs or permanent medical exemption; or has a physician affidavit of Temporary Medical Exemption for one or more doses; or is a transfer student who has no record available yet.

The percentage of children receiving required vaccines and exemptions differed depending on facility type (Table 1). Head Start Facilities reported a higher percentage of children having received all required immunizations (Figure 1 and 2), and a lower percentage of conditional entrants (Figure 3) as well as children with exemptions (Figure 4 and 5) compared with public or private facilities. Private facilities reported a higher percentage of conditional entrants (Figure 3) and children with exemptions (Figure 4 and 5) compared with other facility types.

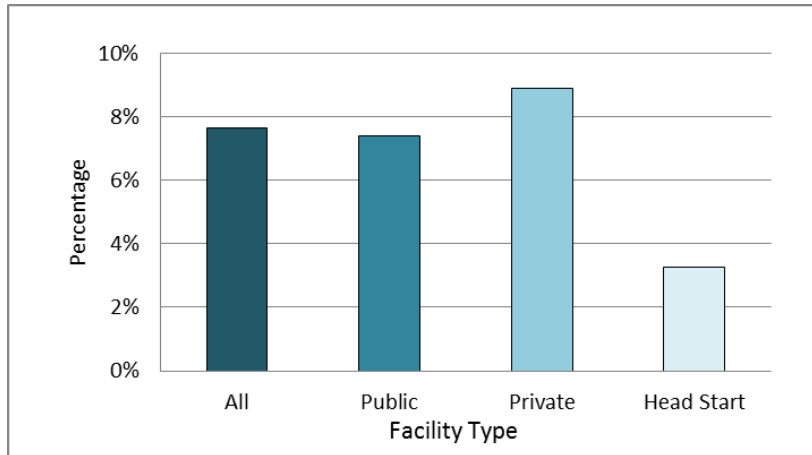
**Figure 1: Percentage of California Child Care Enrollees with All Required Immunizations by Facility Type**



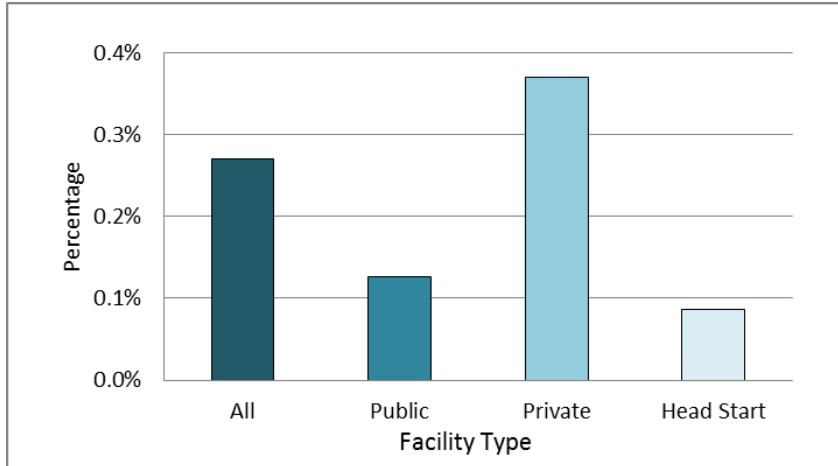
**Figure 2: Percentage of California Child Care Enrollees Completing Required Vaccine Series by Facility Type**



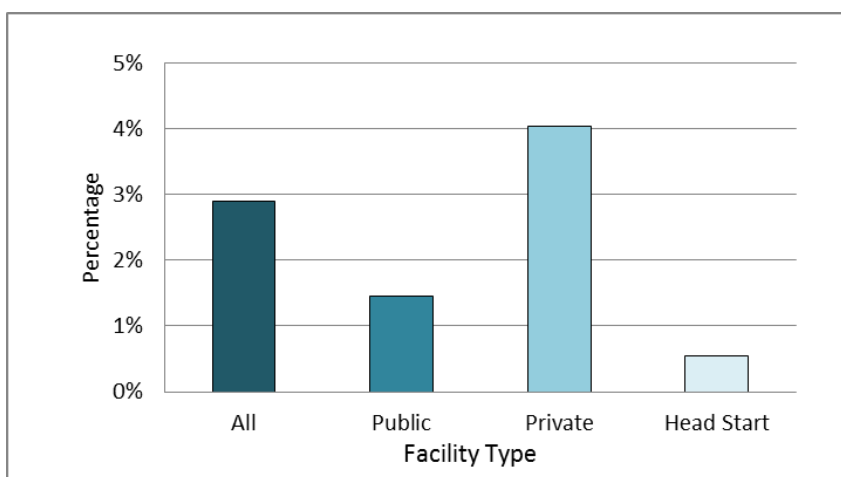
**Figure 3: Percentage of Conditional Entrants Among California Child Care Enrollees by Facility Type**



**Figure 4: Percentage of Child Care Enrollees in California with Permanent Medical Exemptions by Facility Type**

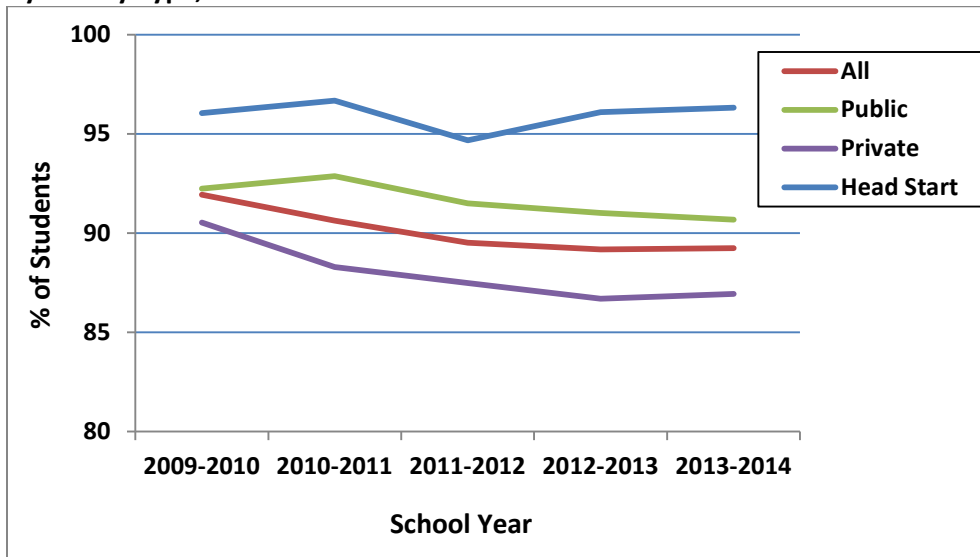


**Figure 5: Percentage of Child Care Enrollees in California with a Personal Beliefs Exemption by Facility Type**



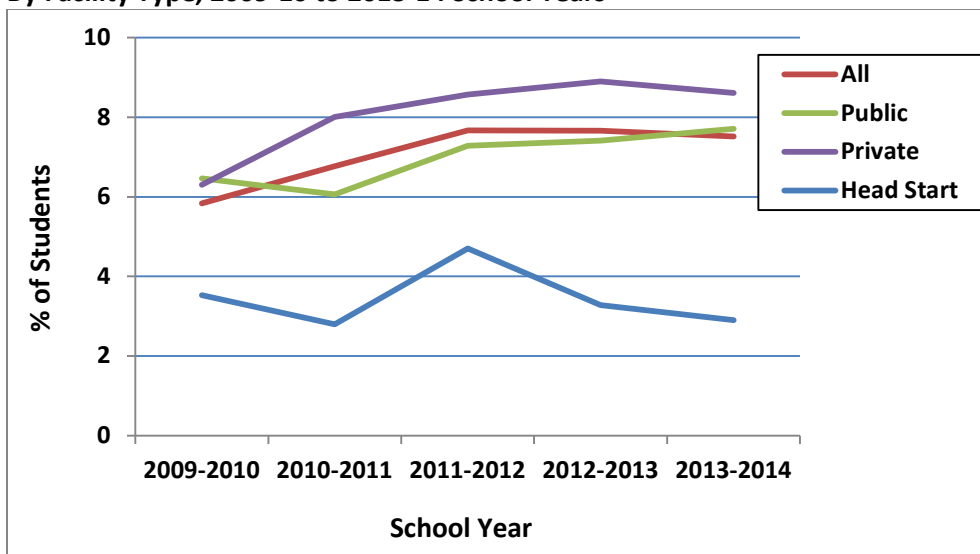
Over the past five years, the percentage of California child care enrollees completing all required immunizations for all facilities has decreased by approximately 3% (Figure 6). Head Start enrollees have consistently had the highest percentage of all required immunizations over the past five years, followed by public, then private facility enrollees. Though the percentage of enrollees with all required immunizations in both public and private facilities decreased over the past five years, the percentage of enrollees in Head Start facilities with all required immunizations has tended to remain the same.

**Figure 6: Percentage of California Child Care Enrollees Completing All Required Immunizations By Facility Type, 2009-10 to 2013-14 School Years**



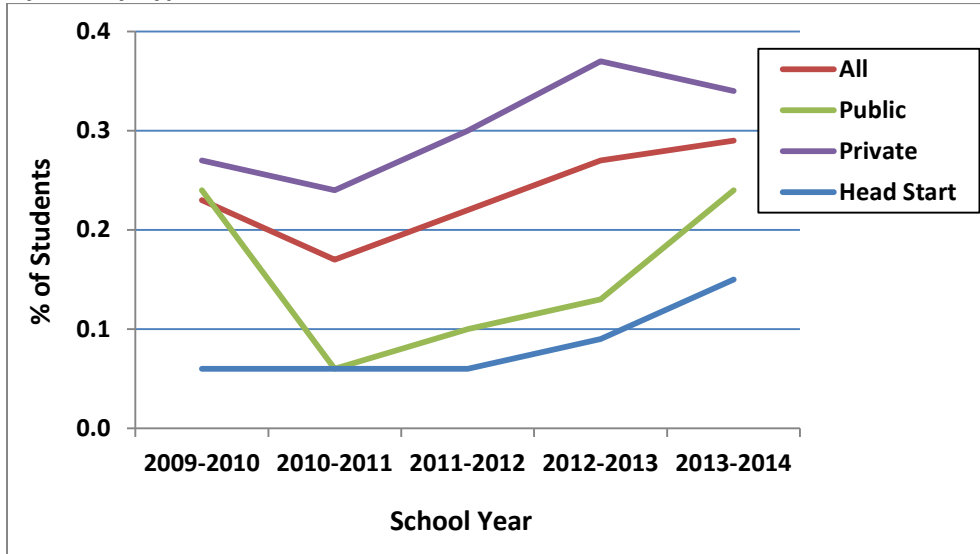
The percentage of conditional entrants among California child care enrollees has increased over the past five years by 1.7 percent (Figure 7). The percentage of conditional entrants among Head Start enrollees over the past five years has consistently been the lowest, followed by public, then private facility enrollees.

**Figure 7: Percentage of Conditional Entrants Among California Child Care Enrollees By Facility Type, 2009-10 to 2013-14 School Years**



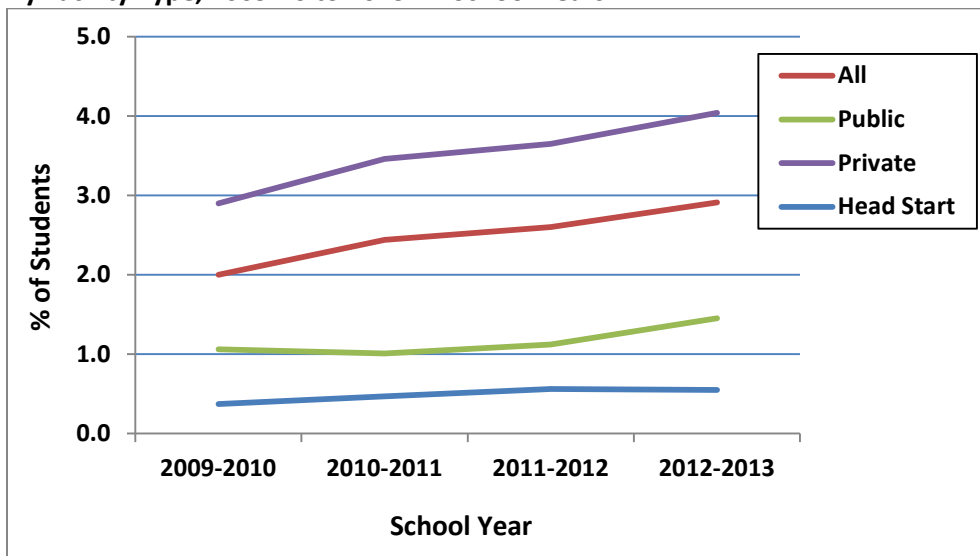
The percentage of California child care enrollees with PME over the past five years has increased for all facility types by about a half percentage (Figure 8). Child care enrollees in Head Start facilities have consistently had the lowest percentage of PMEs followed by public then private facility enrollees.

**Figure 8: Percentage of California Child Care Enrollees with a Permanent Medical Exemption By Facility Type, 2009-10 to 2013-14 School Years**



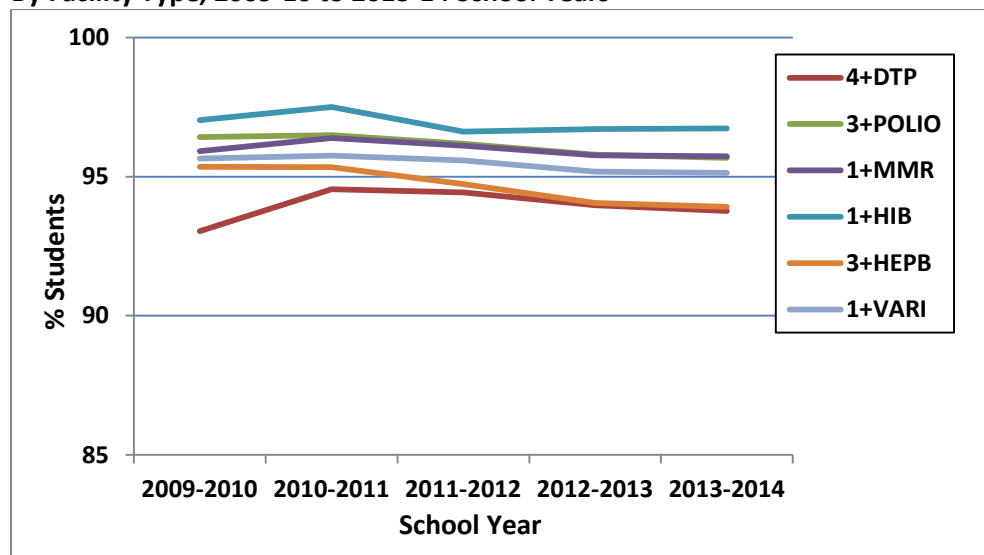
During the 2009-10 to the 2013-14 school years, the percentage of California child care enrollees with a PBE has increased by about one percent (Figure 8). PBE rates have increased at a faster rate among private facility enrollees compared with all other facility types.

**Figure 8: Percentage of California Child Care Enrollees with a Personal Beliefs Exemption By Facility Type, 2009-10 to 2013-14 School Years**



Over the past five years, the percentage of California child care enrollees with the required vaccines has decreased for each required vaccine except 4+DTP which has increased slightly since 2009-10 (Figure 10). The percentage of child care enrollees completing the 3-dose series of Hepatitis B has decreased at a faster rate over the past five years compared with all other vaccines with an overall decrease of 1.4%.

**Figure 10: Percentage of California Child Care Enrollees Completing Required Vaccines By Facility Type, 2009-10 to 2013-14 School Years**



Description of Attached Tables

Enclosed is a full set of tables showing this year’s results. Tables 2, 2a, 2b, and 2c show total enrollment and admission status by county among different types of facilities (all facilities, public, private, and Head Start). Tables 3, 3a, 3b, and 3c show children adequately immunized for each vaccine by county among different types of facilities. Table 4 shows the number of facilities reporting by county and facility type.

For further information, please contact Teresa Lee at (510) 620-3746 or [Teresa.Lee2@cdph.ca.gov](mailto:Teresa.Lee2@cdph.ca.gov) at the California Department of Public Health, Immunization Branch.

CHILD CARE ASSESSMENT - CALIFORNIA, 2013-2014  
 TABLE 2: TOTAL ENROLLMENT AND ADMISSION STATUS  
 BY COUNTY FOR ALL CHILD CARE CENTERS

	TOTAL CHILDREN	ENTRANTS WITH ALL REQ. IMMUN.		CONDITIONAL ENTRANTS		ENTRANTS WITH PME		ENTRANTS WITH PBE	
	NUMBER	NUMBER	PERCENT	NUMBER	PERCENT	NUMBER	PERCENT	NUMBER	PERCENT
STATE TOTAL	486,526	434,227	89.25%	36,572	7.52%	1,402	0.29%	14,325	2.94%
COUNTY									
ALAMEDA	21,198	19,181	90.48%	1,613	7.61%	27	0.13%	377	1.78%
ALPINE	0	0	0.00%	0	0.00%	0	0.00%	0	0.00%
AMADOR	275	213	77.45%	42	15.27%	2	0.73%	18	6.55%
BUTTE	2,725	2,256	82.79%	310	11.38%	10	0.37%	149	5.47%
CALAVERAS	295	253	85.76%	20	6.78%	0	0.00%	22	7.46%
COLUSA	233	225	96.57%	4	1.72%	0	0.00%	4	1.72%
CONTRA_COSTA	14,377	13,216	91.92%	701	4.88%	42	0.29%	418	2.91%
DEL_NORTE	203	181	89.16%	13	6.40%	0	0.00%	9	4.43%
EL_DORADO	1,971	1,645	83.46%	232	11.77%	5	0.25%	89	4.52%
FRESNO	12,961	12,099	93.35%	684	5.28%	15	0.12%	163	1.26%
GLENN	268	259	96.64%	4	1.49%	0	0.00%	5	1.87%
HUMBOLDT	1,540	957	62.14%	217	14.09%	17	1.10%	349	22.66%
IMPERIAL	2,555	2,484	97.22%	62	2.43%	3	0.12%	6	0.23%
INYO	229	207	90.39%	17	7.42%	1	0.44%	4	1.75%
KERN	9,795	9,062	92.52%	492	5.02%	11	0.11%	230	2.35%
KINGS	1,837	1,700	92.54%	112	6.10%	3	0.16%	22	1.20%
LAKE	597	510	85.43%	46	7.71%	0	0.00%	41	6.87%
LASSEN	276	234	84.78%	25	9.06%	1	0.36%	16	5.80%
LOS_ANGELES	123,591	109,218	88.37%	11,125	9.00%	511	0.41%	2,737	2.21%
MADERA	1,783	1,691	94.84%	77	4.32%	2	0.11%	13	0.73%
MARIN	4,740	3,985	84.07%	424	8.95%	30	0.63%	301	6.35%
MARIPOSA	92	63	68.48%	19	20.65%	0	0.00%	10	10.87%
MENDOCINO	1,044	861	82.47%	94	9.00%	12	1.15%	77	7.38%
MERCED	3,419	3,258	95.29%	93	2.72%	16	0.47%	52	1.52%
MODOC	157	126	80.25%	25	15.92%	0	0.00%	6	3.82%
MONO	96	75	78.13%	16	16.67%	1	1.04%	4	4.17%
MONTEREY	5,085	4,657	91.58%	292	5.74%	21	0.41%	115	2.26%
NAPA	2,018	1,832	90.78%	76	3.77%	7	0.35%	103	5.10%
NEVADA	993	674	67.88%	173	17.42%	7	0.70%	139	14.00%
ORANGE	44,070	38,585	87.55%	3,694	8.38%	142	0.32%	1,649	3.74%
PLACER	3,663	2,988	81.57%	471	12.86%	10	0.27%	194	5.30%

CHILD CARE ASSESSMENT - CALIFORNIA, 2013-2014  
 TABLE 2: TOTAL ENROLLMENT AND ADMISSION STATUS  
 BY COUNTY FOR ALL CHILD CARE CENTERS

	TOTAL CHILDREN	ENTRANTS WITH ALL REQ. IMMUN.		CONDITIONAL ENTRANTS		ENTRANTS WITH PME		ENTRANTS WITH PBE	
	NUMBER	NUMBER	PERCENT	NUMBER	PERCENT	NUMBER	PERCENT	NUMBER	PERCENT
STATE TOTAL	486,526	434,227	89.25%	36,572	7.52%	1,402	0.29%	14,325	2.94%
COUNTY									
PLUMAS	149	89	59.73%	33	22.15%	5	3.36%	22	14.77%
RIVERSIDE	20,922	19,238	91.95%	1,088	5.20%	60	0.29%	536	2.56%
SACRAMENTO	17,002	14,933	87.83%	1,597	9.39%	64	0.38%	408	2.40%
SAN_BENITO	642	582	90.65%	50	7.79%	0	0.00%	10	1.56%
SAN_BERNARDINO	21,877	20,816	95.15%	648	2.96%	21	0.10%	392	1.79%
SAN_DIEGO	44,690	40,017	89.54%	2,866	6.41%	85	0.19%	1,722	3.85%
SAN_FRANCISCO	11,736	10,469	89.20%	869	7.40%	19	0.16%	379	3.23%
SAN_JOAQUIN	9,169	8,412	91.74%	638	6.96%	8	0.09%	111	1.21%
SAN_LUIS_OBISPO	2,493	2,146	86.08%	200	8.02%	3	0.12%	144	5.78%
SAN_MATEO	12,552	11,529	91.85%	663	5.28%	25	0.20%	335	2.67%
SANTA_BARBARA	5,709	5,025	88.02%	328	5.75%	18	0.32%	338	5.92%
SANTA_CLARA	30,402	26,847	88.31%	2,686	8.83%	82	0.27%	787	2.59%
SANTA_CRUZ	3,297	2,457	74.52%	599	18.17%	12	0.36%	229	6.95%
SHASTA	2,322	1,978	85.19%	175	7.54%	5	0.22%	164	7.06%
SIERRA	27	26	96.30%	1	3.70%	0	0.00%	0	0.00%
SISKIYOU	542	399	73.62%	68	12.55%	0	0.00%	75	13.84%
SOLANO	3,570	3,238	90.70%	288	8.07%	7	0.20%	37	1.04%
SONOMA	6,037	5,309	87.94%	375	6.21%	10	0.17%	343	5.68%
STANISLAUS	6,398	5,907	92.33%	337	5.27%	30	0.47%	124	1.94%
SUTTER	1,330	1,191	89.55%	113	8.50%	8	0.60%	18	1.35%
TEHAMA	740	686	92.70%	34	4.59%	4	0.54%	16	2.16%
TRINITY	86	67	77.91%	8	9.30%	1	1.16%	10	11.63%
TULARE	5,272	5,031	95.43%	188	3.57%	8	0.15%	45	0.85%
TUOLUMNE	397	284	71.54%	80	20.15%	4	1.01%	29	7.30%
VENTURA	11,243	9,786	87.04%	1,017	9.05%	20	0.18%	420	3.74%
YOLO	2,355	2,118	89.94%	154	6.54%	1	0.04%	82	3.48%
YUBA	969	830	85.66%	127	13.11%	0	0.00%	12	1.24%
BERKELEY_CITY	2,512	2,122	84.47%	169	6.73%	6	0.24%	215	8.56%



CHILD CARE ASSESSMENT - CALIFORNIA, 2013-2014  
 TABLE 2a: TOTAL ENROLLMENT AND ADMISSION STATUS  
 BY COUNTY FOR PUBLIC CHILD CARE CENTERS

	TOTAL CHILDREN	ENTRANTS WITH ALL REQ. IMMUN.		CONDITIONAL ENTRANTS		ENTRANTS WITH PME		ENTRANTS WITH PBE	
	NUMBER	NUMBER	PERCENT	NUMBER	PERCENT	NUMBER	PERCENT	NUMBER	PERCENT
STATE TOTAL	110,924	100,581	90.68%	8,554	7.71%	266	0.24%	1,523	1.37%
COUNTY									
ALAMEDA	3,037	2,702	88.97%	309	10.17%	3	0.10%	23	0.76%
ALPINE	0	0	0.00%	0	0.00%	0	0.00%	0	0.00%
AMADOR	105	75	71.43%	24	22.86%	1	0.95%	5	4.76%
BUTTE	727	604	83.08%	88	12.10%	6	0.83%	29	3.99%
CALAVERAS	92	80	86.96%	8	8.70%	0	0.00%	4	4.35%
COLUSA	44	43	97.73%	1	2.27%	0	0.00%	0	0.00%
CONTRA_COSTA	1,746	1,663	95.25%	65	3.72%	2	0.11%	16	0.92%
DEL_NORTE	81	73	90.12%	5	6.17%	0	0.00%	3	3.70%
EL_DORADO	331	292	88.22%	13	3.93%	3	0.91%	23	6.95%
FRESNO	4,979	4,669	93.77%	249	5.00%	1	0.02%	60	1.21%
GLENN	24	24	100.00%	0	0.00%	0	0.00%	0	0.00%
HUMBOLDT	275	182	66.18%	55	20.00%	4	1.45%	34	12.36%
IMPERIAL	607	594	97.86%	12	1.98%	1	0.16%	0	0.00%
INYO	87	76	87.36%	10	11.49%	1	1.15%	0	0.00%
KERN	3,159	2,991	94.68%	140	4.43%	2	0.06%	26	0.82%
KINGS	611	545	89.20%	55	9.00%	0	0.00%	11	1.80%
LAKE	355	299	84.23%	40	11.27%	0	0.00%	16	4.51%
LASSEN	40	32	80.00%	4	10.00%	0	0.00%	4	10.00%
LOS_ANGELES	25,928	22,008	84.88%	3,620	13.96%	105	0.40%	195	0.75%
MADERA	677	655	96.75%	19	2.81%	0	0.00%	3	0.44%
MARIN	514	470	91.44%	31	6.03%	1	0.19%	12	2.33%
MARIPOSA	44	35	79.55%	5	11.36%	0	0.00%	4	9.09%
MENDOCINO	510	431	84.51%	42	8.24%	6	1.18%	31	6.08%
MERCED	1,754	1,698	96.81%	45	2.57%	1	0.06%	10	0.57%
MODOC	119	94	78.99%	19	15.97%	0	0.00%	6	5.04%
MONO	20	18	90.00%	1	5.00%	1	5.00%	0	0.00%
MONTEREY	2,748	2,557	93.05%	143	5.20%	6	0.22%	42	1.53%
NAPA	534	502	94.01%	28	5.24%	0	0.00%	4	0.75%
NEVADA	394	266	67.51%	95	24.11%	1	0.25%	32	8.12%
ORANGE	10,744	9,882	91.98%	674	6.27%	32	0.30%	156	1.45%
PLACER	400	347	86.75%	41	10.25%	1	0.25%	11	2.75%

CHILD CARE ASSESSMENT - CALIFORNIA, 2013-2014  
 TABLE 2a: TOTAL ENROLLMENT AND ADMISSION STATUS  
 BY COUNTY FOR PUBLIC CHILD CARE CENTERS

	TOTAL CHILDREN	ENTRANTS WITH ALL REQ. IMMUN.		CONDITIONAL ENTRANTS		ENTRANTS WITH PME		ENTRANTS WITH PBE	
	NUMBER	NUMBER	PERCENT	NUMBER	PERCENT	NUMBER	PERCENT	NUMBER	PERCENT
STATE TOTAL	110,924	100,581	90.68%	8,554	7.71%	266	0.24%	1,523	1.37%
COUNTY									
PLUMAS	77	35	45.45%	32	41.56%	0	0.00%	10	12.99%
RIVERSIDE	6,878	6,511	94.66%	286	4.16%	12	0.17%	69	1.00%
SACRAMENTO	3,644	3,345	91.79%	208	5.71%	18	0.49%	73	2.00%
SAN_BENITO	328	289	88.11%	36	10.98%	0	0.00%	3	0.91%
SAN_BERNARDINO	8,449	8,186	96.89%	167	1.98%	8	0.09%	88	1.04%
SAN_DIEGO	8,297	7,788	93.87%	384	4.63%	13	0.16%	112	1.35%
SAN_FRANCISCO	1,929	1,710	88.65%	192	9.95%	1	0.05%	26	1.35%
SAN_JOAQUIN	2,415	2,221	91.97%	184	7.62%	0	0.00%	10	0.41%
SAN_LUIS_OBISPO	300	261	87.00%	26	8.67%	2	0.67%	11	3.67%
SAN_MATEO	2,278	2,060	90.43%	190	8.34%	1	0.04%	27	1.19%
SANTA_BARBARA	668	613	91.77%	26	3.89%	5	0.75%	24	3.59%
SANTA_CLARA	3,152	2,943	93.37%	173	5.49%	3	0.10%	33	1.05%
SANTA_CRUZ	892	763	85.54%	111	12.44%	1	0.11%	17	1.91%
SHASTA	750	642	85.60%	41	5.47%	1	0.13%	66	8.80%
SIERRA	0	0	#DIV/0!	0	#DIV/0!	0	#DIV/0!	0	#DIV/0!
SISKIYOU	191	150	78.53%	26	13.61%	0	0.00%	15	7.85%
SOLANO	945	875	92.59%	64	6.77%	0	0.00%	6	0.63%
SONOMA	540	490	90.74%	20	3.70%	1	0.19%	29	5.37%
STANISLAUS	1,411	1,350	95.68%	34	2.41%	7	0.50%	20	1.42%
SUTTER	535	477	89.16%	50	9.35%	7	1.31%	1	0.19%
TEHAMA	316	283	89.56%	24	7.59%	1	0.32%	8	2.53%
TRINITY	26	24	92.31%	0	0.00%	0	0.00%	2	7.69%
TULARE	2,086	1,984	95.11%	94	4.51%	4	0.19%	4	0.19%
TUOLUMNE	58	42	72.41%	9	15.52%	0	0.00%	7	12.07%
VENTURA	2,261	2,062	91.20%	157	6.94%	2	0.09%	40	1.77%
YOLO	639	569	89.05%	40	6.26%	0	0.00%	30	4.69%
YUBA	642	515	80.22%	121	18.85%	0	0.00%	6	0.93%
BERKELEY_CITY	531	486	91.53%	18	3.39%	1	0.19%	26	4.90%

CHILD CARE ASSESSMENT - CALIFORNIA, 2013-2014  
 TABLE 2b: TOTAL ENROLLMENT AND ADMISSION STATUS  
 BY COUNTY FOR PRIVATE CHILD CARE CENTERS

	TOTAL CHILDREN	ENTRANTS WITH ALL REQ. IMMUN.		CONDITIONAL ENTRANTS		ENTRANTS WITH PME		ENTRANTS WITH PBE	
	NUMBER	NUMBER	PERCENT	NUMBER	PERCENT	NUMBER	PERCENT	NUMBER	PERCENT
STATE TOTAL	299,773	260,604	86.93%	25,817	8.61%	1,026	0.34%	12,326	4.11%
COUNTY									
ALAMEDA	15,506	14,028	90.47%	1,110	7.16%	23	0.15%	345	2.22%
ALPINE	0	0	0.00%	0	0.00%	0	0.00%	0	0.00%
AMADOR	119	87	73.11%	18	15.13%	1	0.84%	13	10.92%
BUTTE	1,534	1,201	78.29%	218	14.21%	3	0.20%	112	7.30%
CALAVERAS	67	49	73.13%	11	16.42%	0	0.00%	7	10.45%
COLUSA	16	16	100.00%	0	0.00%	0	0.00%	0	0.00%
CONTRA COSTA	11,411	10,342	90.63%	630	5.52%	40	0.35%	399	3.50%
DEL NORTE	62	55	88.71%	4	6.45%	0	0.00%	3	4.84%
EL DORADO	1,290	1,032	80.00%	200	15.50%	1	0.08%	57	4.42%
FRESNO	5,875	5,334	90.79%	427	7.27%	12	0.20%	102	1.74%
GLENN	69	60	86.96%	4	5.80%	0	0.00%	5	7.25%
HUMBOLDT	897	463	51.62%	142	15.83%	12	1.34%	280	31.22%
IMPERIAL	1,278	1,230	96.24%	41	3.21%	1	0.08%	6	0.47%
INYO	87	77	88.51%	7	8.05%	0	0.00%	3	3.45%
KERN	4,284	3,765	87.89%	313	7.31%	9	0.21%	197	4.60%
KINGS	721	691	95.84%	19	2.64%	3	0.42%	8	1.11%
LAKE	97	76	78.35%	3	3.09%	0	0.00%	18	18.56%
LASSEN	116	95	81.90%	17	14.66%	0	0.00%	4	3.45%
LOS ANGELES	72,505	63,399	87.44%	6,301	8.69%	355	0.49%	2,450	3.38%
MADERA	591	525	88.83%	56	9.48%	2	0.34%	8	1.35%
MARIN	3,994	3,294	82.47%	387	9.69%	28	0.70%	285	7.14%
MARIPOSA	17	2	11.76%	12	70.59%	0	0.00%	3	17.65%
MENDOCINO	287	189	65.85%	51	17.77%	6	2.09%	41	14.29%
MERCED	571	488	85.46%	30	5.25%	14	2.45%	39	6.83%
MODOC	38	32	84.21%	6	15.79%	0	0.00%	0	0.00%
MONO	57	39	68.42%	14	24.56%	0	0.00%	4	7.02%
MONTEREY	1,662	1,428	85.92%	149	8.97%	14	0.84%	71	4.27%
NAPA	1,233	1,081	87.67%	47	3.81%	7	0.57%	98	7.95%
NEVADA	564	378	67.02%	76	13.48%	6	1.06%	104	18.44%
ORANGE	30,243	25,686	84.93%	2,964	9.80%	108	0.36%	1,485	4.91%
PLACER	3,017	2,418	80.15%	423	14.02%	8	0.27%	168	5.57%

CHILD CARE ASSESSMENT - CALIFORNIA, 2013-2014  
 TABLE 2b: TOTAL ENROLLMENT AND ADMISSION STATUS  
 BY COUNTY FOR PRIVATE CHILD CARE CENTERS

	TOTAL CHILDREN	ENTRANTS WITH ALL REQ. IMMUN.		CONDITIONAL ENTRANTS		ENTRANTS WITH PME		ENTRANTS WITH PBE	
	NUMBER	NUMBER	PERCENT	NUMBER	PERCENT	NUMBER	PERCENT	NUMBER	PERCENT
STATE TOTAL	299,773	260,604	86.93%	25,817	8.61%	1,026	0.34%	12,326	4.11%
COUNTY									
PLUMAS	16	11	68.75%	1	6.25%	1	6.25%	3	18.75%
RIVERSIDE	11,329	10,105	89.20%	724	6.39%	45	0.40%	455	4.02%
SACRAMENTO	9,511	7,845	82.48%	1,332	14.00%	36	0.38%	298	3.13%
SAN BENITO	201	181	90.05%	14	6.97%	0	0.00%	6	2.99%
SAN BERNARDINO	9,029	8,313	92.07%	442	4.90%	10	0.11%	264	2.92%
SAN DIEGO	29,447	25,482	86.54%	2,339	7.94%	63	0.21%	1,563	5.31%
SAN FRANCISCO	8,871	7,833	88.30%	667	7.52%	18	0.20%	353	3.98%
SAN JOAQUIN	4,640	4,116	88.71%	426	9.18%	6	0.13%	92	1.98%
SAN LUIS OBISPO	1,842	1,538	83.50%	170	9.23%	1	0.05%	133	7.22%
SAN MATEO	9,701	8,898	91.72%	471	4.86%	24	0.25%	308	3.17%
SANTA BARBARA	4,143	3,522	85.01%	295	7.12%	13	0.31%	313	7.55%
SANTA CLARA	25,609	22,284	87.02%	2,495	9.74%	79	0.31%	751	2.93%
SANTA CRUZ	1,908	1,258	65.93%	431	22.59%	11	0.58%	208	10.90%
SHASTA	1,097	884	80.58%	124	11.30%	4	0.36%	85	7.75%
SIERRA	27	26	96.30%	1	3.70%	0	0.00%	0	0.00%
SISKIYOU	293	197	67.24%	41	13.99%	0	0.00%	55	18.77%
SOLANO	2,026	1,777	87.71%	215	10.61%	7	0.35%	27	1.33%
SONOMA	4,990	4,320	86.57%	354	7.09%	8	0.16%	308	6.17%
STANISLAUS	3,022	2,622	86.76%	287	9.50%	14	0.46%	99	3.28%
SUTTER	501	425	84.83%	61	12.18%	0	0.00%	15	2.99%
TEHAMA	186	173	93.01%	5	2.69%	0	0.00%	8	4.30%
TRINITY	28	19	67.86%	6	21.43%	1	3.57%	2	7.14%
TULARE	1,638	1,523	92.98%	72	4.40%	4	0.24%	39	2.38%
TUOLUMNE	225	137	60.89%	71	31.56%	4	1.78%	13	5.78%
VENTURA	7,826	6,597	84.30%	835	10.67%	18	0.23%	376	4.80%
YOLO	1,395	1,236	88.60%	108	7.74%	1	0.07%	50	3.58%
YUBA	154	146	94.81%	6	3.90%	0	0.00%	2	1.30%
BERKELEY CITY	1,910	1,576	82.51%	144	7.54%	5	0.26%	185	9.69%

CHILD CARE ASSESSMENT - CALIFORNIA, 2013-2014  
 TABLE 2c: TOTAL ENROLLMENT AND ADMISSION STATUS  
 BY COUNTY FOR HEAD START CHILD CARE CENTERS

	TOTAL CHILDREN	ENTRANTS WITH ALL REQ. IMMUN.		CONDITIONAL ENTRANTS		ENTRANTS WITH PME		ENTRANTS WITH PBE	
	NUMBER	NUMBER	PERCENT	NUMBER	PERCENT	NUMBER	PERCENT	NUMBER	PERCENT
STATE TOTAL	75,829	73,042	96.32%	2,201	2.90%	110	0.15%	476	0.63%
COUNTY									
ALAMEDA	2,655	2,451	92.32%	194	7.31%	1	0.04%	9	0.34%
ALPINE	0	0	0.00%	0	0.00%	0	0.00%	0	0.00%
AMADOR	51	51	100.00%	0	0.00%	0	0.00%	0	0.00%
BUTTE	464	451	97.20%	4	0.86%	1	0.22%	8	1.72%
CALAVERAS	136	124	91.18%	1	0.74%	0	0.00%	11	8.09%
COLUSA	173	166	95.95%	3	1.73%	0	0.00%	4	2.31%
CONTRA COSTA	1,220	1,211	99.26%	6	0.49%	0	0.00%	3	0.25%
DEL NORTE	60	53	88.33%	4	6.67%	0	0.00%	3	5.00%
EL DORADO	350	321	91.71%	19	5.43%	1	0.29%	9	2.57%
FRESNO	2,107	2,096	99.48%	8	0.38%	2	0.09%	1	0.05%
GLENN	175	175	100.00%	0	0.00%	0	0.00%	0	0.00%
HUMBOLDT	368	312	84.78%	20	5.43%	1	0.27%	35	9.51%
IMPERIAL	670	660	98.51%	9	1.34%	1	0.15%	0	0.00%
INYO	55	54	98.18%	0	0.00%	0	0.00%	1	1.82%
KERN	2,352	2,306	98.04%	39	1.66%	0	0.00%	7	0.30%
KINGS	505	464	91.88%	38	7.52%	0	0.00%	3	0.59%
LAKE	145	135	93.10%	3	2.07%	0	0.00%	7	4.83%
LASSEN	120	107	89.17%	4	3.33%	1	0.83%	8	6.67%
LOS ANGELES	25,158	23,811	94.65%	1,204	4.79%	51	0.20%	92	0.37%
MADERA	515	511	99.22%	2	0.39%	0	0.00%	2	0.39%
MARIN	232	221	95.26%	6	2.59%	1	0.43%	4	1.72%
MARIPOSA	31	26	83.87%	2	6.45%	0	0.00%	3	9.68%
MENDOCINO	247	241	97.57%	1	0.40%	0	0.00%	5	2.02%
MERCED	1,094	1,072	97.99%	18	1.65%	1	0.09%	3	0.27%
MODOC	0	0	0.00%	0	0.00%	0	0.00%	0	0.00%
MONO	19	18	94.74%	1	5.26%	0	0.00%	0	0.00%
MONTEREY	675	672	99.56%	0	0.00%	1	0.15%	2	0.30%
NAPA	251	249	99.20%	1	0.40%	0	0.00%	1	0.40%
NEVADA	35	30	85.71%	2	5.71%	0	0.00%	3	8.57%
ORANGE	3,083	3,017	97.86%	56	1.82%	2	0.06%	8	0.26%
PLACER	246	223	90.65%	7	2.85%	1	0.41%	15	6.10%

CHILD CARE ASSESSMENT - CALIFORNIA, 2013-2014  
 TABLE 2c: TOTAL ENROLLMENT AND ADMISSION STATUS  
 BY COUNTY FOR HEAD START CHILD CARE CENTERS

	TOTAL CHILDREN	ENTRANTS WITH ALL REQ. IMMUN.		CONDITIONAL ENTRANTS		ENTRANTS WITH PME		ENTRANTS WITH PBE	
	NUMBER	NUMBER	PERCENT	NUMBER	PERCENT	NUMBER	PERCENT	NUMBER	PERCENT
STATE TOTAL	75,829	73,042	96.32%	2,201	2.90%	110	0.15%	476	0.63%
COUNTY									
PLUMAS	56	43	76.79%	0	0.00%	4	7.14%	9	16.07%
RIVERSIDE	2,715	2,622	96.57%	78	2.87%	3	0.11%	12	0.44%
SACRAMENTO	3,847	3,743	97.30%	57	1.48%	10	0.26%	37	0.96%
SAN BENITO	113	112	99.12%	0	0.00%	0	0.00%	1	0.88%
SAN BERNARDINO	4,399	4,317	98.14%	39	0.89%	3	0.07%	40	0.91%
SAN DIEGO	6,946	6,747	97.14%	143	2.06%	9	0.13%	47	0.68%
SAN FRANCISCO	936	926	98.93%	10	1.07%	0	0.00%	0	0.00%
SAN JOAQUIN	2,114	2,075	98.16%	28	1.32%	2	0.09%	9	0.43%
SAN LUIS OBISPO	351	347	98.86%	4	1.14%	0	0.00%	0	0.00%
SAN MATEO	573	571	99.65%	2	0.35%	0	0.00%	0	0.00%
SANTA BARBARA	898	890	99.11%	7	0.78%	0	0.00%	1	0.11%
SANTA CLARA	1,641	1,620	98.72%	18	1.10%	0	0.00%	3	0.18%
SANTA CRUZ	497	436	87.73%	57	11.47%	0	0.00%	4	0.80%
SHASTA	475	452	95.16%	10	2.11%	0	0.00%	13	2.74%
SIERRA	0	0	0.00%	0	0.00%	0	0.00%	0	0.00%
SISKIYOU	58	52	89.66%	1	1.72%	0	0.00%	5	8.62%
SOLANO	599	586	97.83%	9	1.50%	0	0.00%	4	0.67%
SONOMA	507	499	98.42%	1	0.20%	1	0.20%	6	1.18%
STANISLAUS	1,965	1,935	98.47%	16	0.81%	9	0.46%	5	0.25%
SUTTER	294	289	98.30%	2	0.68%	1	0.34%	2	0.68%
TEHAMA	238	230	96.64%	5	2.10%	3	1.26%	0	0.00%
TRINITY	32	24	75.00%	2	6.25%	0	0.00%	6	18.75%
TULARE	1,548	1,524	98.45%	22	1.42%	0	0.00%	2	0.13%
TUOLUMNE	114	105	92.11%	0	0.00%	0	0.00%	9	7.89%
VENTURA	1,156	1,127	97.49%	25	2.16%	0	0.00%	4	0.35%
YOLO	321	313	97.51%	6	1.87%	0	0.00%	2	0.62%
YUBA	173	169	97.69%	0	0.00%	0	0.00%	4	2.31%
BERKELEY CITY	71	60	84.51%	7	9.86%	0	0.00%	4	5.63%

TABLE 3: CHILDREN ADEQUATELY IMMUNIZED  
BY COUNTY FOR ALL CHILD CARE CENTERS

	TOTAL CHILDREN	DTP 4+		POLIO 3+		MMR 1+		HIB 1+		HEP B 3+		VAR 1+	
	NUMBER	NUMBER	PERCENT	NUMBER	PERCENT	NUMBER	PERCENT	NUMBER	PERCENT	NUMBER	PERCENT	NUMBER	PERCENT
STATE TOTAL	486,526	456,231	93.77%	465,465	95.67%	465,766	95.73%	470,633	96.73%	456,926	93.92%	462,889	95.14%
COUNTY													
ALAMEDA	21,198	20,078	94.72%	20,534	96.87%	20,574	97.06%	20,730	97.79%	20,053	94.60%	20,440	96.42%
ALPINE	0	0	0.00%	0	0.00%	0	0.00%	0	0.00%	0	0.00%	0	0.00%
AMADOR	275	226	82.18%	253	92.00%	257	93.45%	260	94.55%	242	88.00%	256	93.09%
BUTTE	2,725	2,446	89.76%	2,565	94.13%	2,512	92.18%	2,608	95.71%	2,495	91.56%	2,497	91.63%
CALAVERAS	295	271	91.86%	271	91.86%	276	93.56%	280	94.92%	263	89.15%	269	91.19%
COLUSA	233	227	97.42%	231	99.14%	229	98.28%	231	99.14%	229	98.28%	229	98.28%
CONTRA COSTA	14,377	13,676	95.12%	13,908	96.74%	13,939	96.95%	14,093	98.02%	13,635	94.84%	13,871	96.48%
DEL NORTE	203	186	91.63%	194	95.57%	195	96.06%	195	96.06%	192	94.58%	194	95.57%
EL DORADO	1,971	1,734	87.98%	1,821	92.39%	1,832	92.95%	1,865	94.62%	1,788	90.72%	1,814	92.03%
FRESNO	12,961	12,310	94.98%	12,605	97.25%	12,591	97.15%	12,672	97.77%	12,564	96.94%	12,557	96.88%
GLENN	268	262	97.76%	264	98.51%	263	98.13%	264	98.51%	261	97.39%	263	98.13%
HUMBOLDT	1,540	1,123	72.92%	1,178	76.49%	1,194	77.53%	1,253	81.36%	1,102	71.56%	1,113	72.27%
IMPERIAL	2,555	2,530	99.02%	2,538	99.33%	2,545	99.61%	2,551	99.84%	2,521	98.67%	2,540	99.41%
INYO	229	222	96.94%	226	98.69%	225	98.25%	226	98.69%	221	96.51%	215	93.89%
KERN	9,795	9,266	94.60%	9,552	97.52%	9,527	97.26%	9,652	98.54%	9,520	97.19%	9,464	96.62%
KINGS	1,837	1,745	94.99%	1,794	97.66%	1,803	98.15%	1,804	98.20%	1,792	97.55%	1,801	98.04%
LAKE	597	522	87.44%	540	90.45%	536	89.78%	549	91.96%	538	90.12%	532	89.11%
LASSEN	276	243	88.04%	257	93.12%	258	93.48%	264	95.65%	255	92.39%	251	90.94%
LOS ANGELES	123,591	115,549	93.49%	117,702	95.24%	117,903	95.40%	118,082	95.54%	115,790	93.69%	117,428	95.01%
MADERA	1,783	1,722	96.58%	1,750	98.15%	1,748	98.04%	1,759	98.65%	1,729	96.97%	1,745	97.87%
MARIN	4,740	4,453	93.95%	4,383	92.47%	4,463	94.16%	4,543	95.84%	4,232	89.28%	4,381	92.43%
MARIPOSA	92	67	72.83%	71	77.17%	82	89.13%	82	89.13%	66	71.74%	78	84.78%
MENDOCINO	1,044	928	88.89%	939	89.94%	948	90.80%	968	92.72%	902	86.40%	928	88.89%
MERCED	3,419	3,280	95.93%	3,372	98.63%	3,373	98.65%	3,392	99.21%	3,359	98.25%	3,374	98.68%
MODOC	157	133	84.71%	144	91.72%	141	89.81%	146	92.99%	138	87.90%	133	84.71%
MONO	96	80	83.33%	90	93.75%	84	87.50%	91	94.79%	86	89.58%	84	87.50%
MONTEREY	5,085	4,811	94.61%	4,916	96.68%	4,876	95.89%	4,957	97.48%	4,842	95.22%	4,877	95.91%
NAPA	2,018	1,916	94.95%	1,937	95.99%	1,940	96.13%	1,969	97.57%	1,893	93.81%	1,909	94.60%
NEVADA	993	781	78.65%	850	85.60%	849	85.50%	874	88.02%	779	78.45%	802	80.77%
ORANGE	44,070	41,140	93.35%	41,895	95.06%	41,763	94.77%	42,632	96.74%	40,739	92.44%	41,598	94.39%
PLACER	3,663	3,252	88.78%	3,356	91.62%	3,353	91.54%	3,456	94.35%	3,212	87.69%	3,313	90.44%

TABLE 3: CHILDREN ADEQUATELY IMMUNIZED  
BY COUNTY FOR ALL CHILD CARE CENTERS

	TOTAL CHILDREN	DTP 4+		POLIO 3+		MMR 1+		HIB 1+		HEP B 3+		VAR 1+	
	NUMBER	NUMBER	PERCENT	NUMBER	PERCENT	NUMBER	PERCENT	NUMBER	PERCENT	NUMBER	PERCENT	NUMBER	PERCENT
STATE TOTAL	486,526	456,231	93.77%	465,465	95.67%	465,766	95.73%	470,633	96.73%	456,926	93.92%	462,889	95.14%
COUNTY													
PLUMAS	149	108	72.48%	128	85.91%	131	87.92%	130	87.25%	128	85.91%	123	82.55%
RIVERSIDE	20,922	19,796	94.62%	20,230	96.69%	20,282	96.94%	20,433	97.66%	20,104	96.09%	20,258	96.83%
SACRAMENTO	17,002	15,587	91.68%	16,153	95.01%	16,143	94.95%	16,367	96.27%	15,879	93.39%	15,971	93.94%
SAN BENITO	642	616	95.95%	622	96.88%	619	96.42%	624	97.20%	621	96.73%	622	96.88%
SAN BERNARDINO	21,877	21,148	96.67%	21,391	97.78%	21,367	97.67%	21,486	98.21%	21,300	97.36%	21,363	97.65%
SAN DIEGO	44,690	42,024	94.03%	42,693	95.53%	42,726	95.61%	43,281	96.85%	41,908	93.77%	42,445	94.98%
SAN FRANCISCO	11,736	11,181	95.27%	11,311	96.38%	11,345	96.67%	11,513	98.10%	10,960	93.39%	11,239	95.77%
SAN JOAQUIN	9,169	8,659	94.44%	8,928	97.37%	8,930	97.39%	8,989	98.04%	8,822	96.22%	8,906	97.13%
SAN LUIS OBISPO	2,493	2,320	93.06%	2,305	92.46%	2,337	93.74%	2,384	95.63%	2,275	91.26%	2,320	93.06%
SAN MATEO	12,552	12,009	95.67%	12,208	97.26%	12,197	97.17%	12,310	98.07%	11,949	95.20%	12,090	96.32%
SANTA BARBARA	5,709	5,333	93.41%	5,415	94.85%	5,373	94.11%	5,470	95.81%	5,237	91.73%	5,275	92.40%
SANTA CLARA	30,402	28,419	93.48%	29,258	96.24%	29,235	96.16%	29,794	98.00%	28,575	93.99%	28,991	95.36%
SANTA CRUZ	3,297	2,877	87.26%	2,968	90.02%	2,954	89.60%	3,037	92.11%	2,747	83.32%	2,909	88.23%
SHASTA	2,322	2,074	89.32%	2,127	91.60%	2,136	91.99%	2,156	92.85%	2,102	90.53%	2,105	90.65%
SIERRA	27	27	100.00%	27	100.00%	26	96.30%	27	100.00%	27	100.00%	26	96.30%
SISKIYOU	542	456	84.13%	500	92.25%	489	90.22%	503	92.80%	477	88.01%	451	83.21%
SOLANO	3,570	3,316	92.89%	3,412	95.57%	3,422	95.85%	3,461	96.95%	3,360	94.12%	3,418	95.74%
SONOMA	6,037	5,667	93.87%	5,706	94.52%	5,751	95.26%	5,794	95.97%	5,501	91.12%	5,661	93.77%
STANISLAUS	6,398	6,101	95.36%	6,211	97.08%	6,201	96.92%	6,267	97.95%	6,160	96.28%	6,151	96.14%
SUTTER	1,330	1,250	93.98%	1,292	97.14%	1,281	96.32%	1,305	98.12%	1,282	96.39%	1,285	96.62%
TEHAMA	740	711	96.08%	723	97.70%	718	97.03%	727	98.24%	715	96.62%	718	97.03%
TRINITY	86	71	82.56%	76	88.37%	75	87.21%	78	90.70%	77	89.53%	74	86.05%
TULARE	5,272	5,119	97.10%	5,163	97.93%	5,165	97.97%	5,187	98.39%	5,132	97.34%	5,166	97.99%
TUOLUMNE	397	322	81.11%	355	89.42%	361	90.93%	373	93.95%	342	86.15%	334	84.13%
VENTURA	11,243	10,370	92.24%	10,584	94.14%	10,630	94.55%	10,807	96.12%	10,426	92.73%	10,515	93.52%
YOLO	2,355	2,239	95.07%	2,263	96.09%	2,258	95.88%	2,303	97.79%	2,232	94.78%	2,256	95.80%
YUBA	969	892	92.05%	941	97.11%	946	97.63%	959	98.97%	933	96.28%	944	97.42%
BERKELEY CITY	2,512	2,360	93.95%	2,339	93.11%	2,389	95.10%	2,420	96.34%	2,217	88.26%	2,317	92.24%



TABLE 3a: CHILDREN ADEQUATELY IMMUNIZED  
BY COUNTY FOR PUBLIC CHILD CARE CENTERS

	TOTAL CHILDREN	DTP 4+		POLIO 3+		MMR 1+		HIB 1+		HEP B 3+		VAR 1+	
	NUMBER	NUMBER	PERCENT	NUMBER	PERCENT	NUMBER	PERCENT	NUMBER	PERCENT	NUMBER	PERCENT	NUMBER	PERCENT
STATE TOTAL	110,924	104,466	94.18%	107,014	96.48%	106,869	96.34%	106,865	96.34%	105,839	95.42%	106,615	96.12%
COUNTY													
ALAMEDA	3,037	2,820	92.85%	2,919	96.11%	2,913	95.92%	2,924	96.28%	2,835	93.35%	2,932	96.54%
ALPINE	0	0	0.00%	0	0.00%	0	0.00%	0	0.00%	0	0.00%	0	0.00%
AMADOR	105	83	79.05%	97	92.38%	98	93.33%	100	95.24%	92	87.62%	98	93.33%
BUTTE	727	641	88.17%	695	95.60%	684	94.09%	706	97.11%	690	94.91%	681	93.67%
CALAVERAS	92	84	91.30%	86	93.48%	87	94.57%	88	95.65%	85	92.39%	85	92.39%
COLUSA	44	43	97.73%	44	100.00%	44	100.00%	44	100.00%	43	97.73%	43	97.73%
CONTRA COSTA	1,746	1,693	96.96%	1,716	98.28%	1,713	98.11%	1,717	98.34%	1,701	97.42%	1,712	98.05%
DEL NORTE	81	74	91.36%	75	92.59%	78	96.30%	76	93.83%	75	92.59%	77	95.06%
EL DORADO	331	301	90.94%	304	91.84%	300	90.63%	300	90.63%	304	91.84%	301	90.94%
FRESNO	4,979	4,737	95.14%	4,798	96.36%	4,818	96.77%	4,842	97.25%	4,824	96.89%	4,803	96.47%
GLENN	24	24	100.00%	24	100.00%	24	100.00%	24	100.00%	24	100.00%	24	100.00%
HUMBOLDT	275	221	80.36%	234	85.09%	230	83.64%	248	90.18%	213	77.45%	222	80.73%
IMPERIAL	607	604	99.51%	606	99.84%	604	99.51%	607	100.00%	603	99.34%	603	99.34%
INYO	87	86	98.85%	87	100.00%	86	98.85%	87	100.00%	87	100.00%	77	88.51%
KERN	3,159	3,031	95.95%	3,104	98.26%	3,119	98.73%	3,136	99.27%	3,088	97.75%	3,108	98.39%
KINGS	611	576	94.27%	597	97.71%	601	98.36%	598	97.87%	598	97.87%	602	98.53%
LAKE	355	309	87.04%	323	90.99%	319	89.86%	331	93.24%	323	90.99%	317	89.30%
LASSEN	40	33	82.50%	35	87.50%	36	90.00%	36	90.00%	36	90.00%	33	82.50%
LOS ANGELES	25,928	23,640	91.18%	24,347	93.90%	24,228	93.44%	23,743	91.57%	24,001	92.57%	24,226	93.44%
MADERA	677	665	98.23%	669	98.82%	672	99.26%	670	98.97%	664	98.08%	671	99.11%
MARIN	514	489	95.14%	501	97.47%	502	97.67%	507	98.64%	488	94.94%	504	98.05%
MARIPOSA	44	38	86.36%	39	88.64%	40	90.91%	40	90.91%	36	81.82%	40	90.91%
MENDOCINO	510	463	90.78%	471	92.35%	472	92.55%	485	95.10%	452	88.63%	463	90.78%
MERCED	1,754	1,707	97.32%	1,732	98.75%	1,736	98.97%	1,740	99.20%	1,727	98.46%	1,736	98.97%
MODOC	119	99	83.19%	107	89.92%	105	88.24%	109	91.60%	101	84.87%	98	82.35%
MONO	20	20	100.00%	20	100.00%	20	100.00%	19	95.00%	20	100.00%	19	95.00%
MONTEREY	2,748	2,630	95.71%	2,684	97.67%	2,668	97.09%	2,704	98.40%	2,654	96.58%	2,662	96.87%
NAPA	534	509	95.32%	527	98.69%	530	99.25%	534	100.00%	523	97.94%	528	98.88%
NEVADA	394	309	78.43%	360	91.37%	359	91.12%	374	94.92%	321	81.47%	340	86.29%
ORANGE	10,744	10,246	95.36%	10,399	96.79%	10,383	96.64%	10,452	97.28%	10,230	95.22%	10,356	96.39%
PLACER	400	357	89.25%	377	94.25%	384	96.00%	386	96.50%	369	92.25%	378	94.50%

TABLE 3a: CHILDREN ADEQUATELY IMMUNIZED  
BY COUNTY FOR PUBLIC CHILD CARE CENTERS

	TOTAL CHILDREN	DTP 4+		POLIO 3+		MMR 1+		HIB 1+		HEP B 3+		VAR 1+	
	NUMBER	NUMBER	PERCENT	NUMBER	PERCENT	NUMBER	PERCENT	NUMBER	PERCENT	NUMBER	PERCENT	NUMBER	PERCENT
STATE TOTAL	110,924	104,466	94.18%	107,014	96.48%	106,869	96.34%	106,865	96.34%	105,839	95.42%	106,615	96.12%
COUNTY													
PLUMAS	77	52	67.53%	63	81.82%	65	84.42%	63	81.82%	62	80.52%	60	77.92%
RIVERSIDE	6,878	6,629	96.38%	6,753	98.18%	6,789	98.71%	6,788	98.69%	6,746	98.08%	6,780	98.58%
SACRAMENTO	3,644	3,432	94.18%	3,539	97.12%	3,536	97.04%	3,552	97.48%	3,497	95.97%	3,511	96.35%
SAN BENITO	328	316	96.34%	319	97.26%	318	96.95%	325	99.09%	318	96.95%	318	96.95%
SAN BERNARDINO	8,449	8,246	97.60%	8,319	98.46%	8,310	98.35%	8,336	98.66%	8,300	98.24%	8,309	98.34%
SAN DIEGO	8,297	8,003	96.46%	8,154	98.28%	8,148	98.20%	8,154	98.28%	8,083	97.42%	8,128	97.96%
SAN FRANCISCO	1,929	1,798	93.21%	1,879	97.41%	1,878	97.36%	1,879	97.41%	1,802	93.42%	1,865	96.68%
SAN JOAQUIN	2,415	2,280	94.41%	2,371	98.18%	2,375	98.34%	2,393	99.09%	2,362	97.81%	2,369	98.10%
SAN LUIS OBISPO	300	284	94.67%	286	95.33%	288	96.00%	292	97.33%	285	95.00%	276	92.00%
SAN MATEO	2,278	2,093	91.88%	2,231	97.94%	2,228	97.81%	2,235	98.11%	2,220	97.45%	2,219	97.41%
SANTA BARBARA	668	639	95.66%	651	97.46%	648	97.01%	656	98.20%	639	95.66%	644	96.41%
SANTA CLARA	3,152	3,018	95.75%	3,089	98.00%	3,072	97.46%	3,098	98.29%	3,057	96.99%	3,055	96.92%
SANTA CRUZ	892	826	92.60%	857	96.08%	842	94.39%	832	93.27%	831	93.16%	852	95.52%
SHASTA	750	672	89.60%	680	90.67%	684	91.20%	689	91.87%	673	89.73%	672	89.60%
SIERRA	0	0	0.00%	0	0.00%	0	0.00%	0	0.00%	0	0.00%	0	0.00%
SISKIYOU	191	160	83.77%	177	92.67%	174	91.10%	179	93.72%	170	89.01%	164	85.86%
SOLANO	945	887	93.86%	905	95.77%	909	96.19%	914	96.72%	901	95.34%	908	96.08%
SONOMA	540	507	93.89%	510	94.44%	511	94.63%	516	95.56%	500	92.59%	502	92.96%
STANISLAUS	1,411	1,374	97.38%	1,392	98.65%	1,384	98.09%	1,397	99.01%	1,388	98.37%	1,395	98.87%
SUTTER	535	511	95.51%	524	97.94%	515	96.26%	530	99.07%	520	97.20%	522	97.57%
TEHAMA	316	298	94.30%	307	97.15%	304	96.20%	309	97.78%	301	95.25%	304	96.20%
TRINITY	26	25	96.15%	25	96.15%	25	96.15%	25	96.15%	25	96.15%	24	92.31%
TULARE	2,086	2,003	96.02%	2,024	97.03%	2,027	97.17%	2,038	97.70%	2,023	96.98%	2,027	97.17%
TUOLUMNE	58	48	82.76%	49	84.48%	51	87.93%	51	87.93%	45	77.59%	48	82.76%
VENTURA	2,261	2,141	94.69%	2,189	96.82%	2,190	96.86%	2,217	98.05%	2,176	96.24%	2,182	96.51%
YOLO	639	604	94.52%	613	95.93%	608	95.15%	621	97.18%	596	93.27%	605	94.68%
YUBA	642	576	89.72%	622	96.88%	625	97.35%	635	98.91%	612	95.33%	623	97.04%
BERKELEY CITY	531	512	96.42%	509	95.86%	512	96.42%	514	96.80%	500	94.16%	514	96.80%

TABLE 3b: CHILDREN ADEQUATELY IMMUNIZED  
BY COUNTY FOR PRIVATE CHILD CARE CENTERS

	TOTAL CHILDREN	DTP 4+		POLIO 3+		MMR 1+		HIB 1+		HEP B 3+		VAR 1+	
	NUMBER	NUMBER	PERCENT	NUMBER	PERCENT	NUMBER	PERCENT	NUMBER	PERCENT	NUMBER	PERCENT	NUMBER	PERCENT
STATE TOTAL	299,773	277,593	92.60%	283,463	94.56%	283,852	94.69%	288,971	96.40%	276,319	92.18%	281,305	93.84%
COUNTY													
ALAMEDA	15,506	14,726	94.97%	15,015	96.83%	15,060	97.12%	15,172	97.85%	14,646	94.45%	14,917	96.20%
ALPINE	0	0	0.00%	0	0.00%	0	0.00%	0	0.00%	0	0.00%	0	0.00%
AMADOR	119	92	77.31%	105	88.24%	108	90.76%	109	91.60%	99	83.19%	107	89.92%
BUTTE	1,534	1,350	88.01%	1,413	92.11%	1,372	89.44%	1,445	94.20%	1,349	87.94%	1,360	88.66%
CALAVERAS	67	62	92.54%	58	86.57%	61	91.04%	63	94.03%	52	77.61%	57	85.07%
COLUSA	16	16	100.00%	16	100.00%	16	100.00%	16	100.00%	16	100.00%	16	100.00%
CONTRA COSTA	11,411	10,771	94.39%	10,975	96.18%	11,009	96.48%	11,159	97.79%	10,719	93.94%	10,942	95.89%
DEL NORTE	62	58	93.55%	61	98.39%	60	96.77%	61	98.39%	59	95.16%	61	98.39%
EL DORADO	1,290	1,102	85.43%	1,179	91.40%	1,192	92.40%	1,232	95.50%	1,146	88.84%	1,173	90.93%
FRESNO	5,875	5,476	93.21%	5,702	97.06%	5,666	96.44%	5,723	97.41%	5,634	95.90%	5,647	96.12%
GLENN	69	63	91.30%	65	94.20%	64	92.75%	65	94.20%	62	89.86%	64	92.75%
HUMBOLDT	897	579	64.55%	614	68.45%	635	70.79%	672	74.92%	563	62.76%	562	62.65%
IMPERIAL	1,278	1,263	98.83%	1,264	98.90%	1,271	99.45%	1,274	99.69%	1,253	98.04%	1,267	99.14%
INYO	87	82	94.25%	85	97.70%	85	97.70%	85	97.70%	80	91.95%	84	96.55%
KERN	4,284	3,927	91.67%	4,106	95.85%	4,062	94.82%	4,169	97.32%	4,090	95.47%	4,010	93.60%
KINGS	721	698	96.81%	708	98.20%	710	98.47%	711	98.61%	704	97.64%	707	98.06%
LAKE	97	77	79.38%	77	79.38%	78	80.41%	78	80.41%	76	78.35%	76	78.35%
LASSEN	116	100	86.21%	107	92.24%	110	94.83%	112	96.55%	104	89.66%	107	92.24%
LOS ANGELES	72,505	67,385	92.94%	68,506	94.48%	68,829	94.93%	69,800	96.27%	67,051	92.48%	68,396	94.33%
MADERA	591	544	92.05%	568	96.11%	563	95.26%	578	97.80%	552	93.40%	561	94.92%
MARIN	3,994	3,742	93.69%	3,656	91.54%	3,735	93.52%	3,809	95.37%	3,519	88.11%	3,652	91.44%
MARIPOSA	17	3	17.65%	4	23.53%	14	82.35%	14	82.35%	2	11.76%	10	58.82%
MENDOCINO	287	223	77.70%	226	78.75%	231	80.49%	238	82.93%	206	71.78%	220	76.66%
MERCED	571	498	87.22%	551	96.50%	546	95.62%	560	98.07%	547	95.80%	547	95.80%
MODOC	38	34	89.47%	37	97.37%	36	94.74%	37	97.37%	37	97.37%	35	92.11%
MONO	57	42	73.68%	51	89.47%	45	78.95%	53	92.98%	47	82.46%	46	80.70%
MONTEREY	1,662	1,508	90.73%	1,558	93.74%	1,534	92.30%	1,580	95.07%	1,514	91.10%	1,541	92.72%
NAPA	1,233	1,157	93.84%	1,159	94.00%	1,160	94.08%	1,184	96.03%	1,120	90.84%	1,131	91.73%
NEVADA	564	441	78.19%	456	80.85%	457	81.03%	466	82.62%	424	75.18%	431	76.42%
ORANGE	30,243	27,854	92.10%	28,429	94.00%	28,309	93.61%	29,119	96.28%	27,442	90.74%	28,171	93.15%
PLACER	3,017	2,671	88.53%	2,750	91.15%	2,740	90.82%	2,840	94.13%	2,614	86.64%	2,706	89.69%

TABLE 3b: CHILDREN ADEQUATELY IMMUNIZED  
BY COUNTY FOR PRIVATE CHILD CARE CENTERS

	TOTAL CHILDREN	DTP 4+		POLIO 3+		MMR 1+		HIB 1+		HEP B 3+		VAR 1+	
	NUMBER	NUMBER	PERCENT	NUMBER	PERCENT	NUMBER	PERCENT	NUMBER	PERCENT	NUMBER	PERCENT	NUMBER	PERCENT
STATE TOTAL	299,773	277,593	92.60%	283,463	94.56%	283,852	94.69%	288,971	96.40%	276,319	92.18%	281,305	93.84%
COUNTY													
PLUMAS	16	12	75.00%	13	81.25%	13	81.25%	13	81.25%	12	75.00%	12	75.00%
RIVERSIDE	11,329	10,517	92.83%	10,794	95.28%	10,801	95.34%	10,950	96.65%	10,678	94.25%	10,790	95.24%
SACRAMENTO	9,511	8,376	88.07%	8,814	92.67%	8,798	92.50%	9,013	94.76%	8,579	90.20%	8,650	90.95%
SAN BENITO	201	188	93.53%	191	95.02%	189	94.03%	187	93.03%	191	95.02%	192	95.52%
SAN BERNARDINO	9,029	8,568	94.89%	8,714	96.51%	8,692	96.27%	8,788	97.33%	8,645	95.75%	8,687	96.21%
SAN DIEGO	29,447	27,215	92.42%	27,657	93.92%	27,696	94.05%	28,225	95.85%	26,965	91.57%	27,436	93.17%
SAN FRANCISCO	8,871	8,452	95.28%	8,496	95.77%	8,532	96.18%	8,698	98.05%	8,229	92.76%	8,439	95.13%
SAN JOAQUIN	4,640	4,299	92.65%	4,455	96.01%	4,450	95.91%	4,491	96.79%	4,358	93.92%	4,432	95.52%
SAN LUIS OBISPO	1,842	1,688	91.64%	1,669	90.61%	1,698	92.18%	1,741	94.52%	1,640	89.03%	1,693	91.91%
SAN MATEO	9,701	9,344	96.32%	9,404	96.94%	9,396	96.86%	9,502	97.95%	9,156	94.38%	9,299	95.86%
SANTA BARBARA	4,143	3,802	91.77%	3,868	93.36%	3,828	92.40%	3,917	94.55%	3,701	89.33%	3,734	90.13%
SANTA CLARA	25,609	23,777	92.85%	24,537	95.81%	24,523	95.76%	25,057	97.84%	23,882	93.26%	24,297	94.88%
SANTA CRUZ	1,908	1,590	83.33%	1,641	86.01%	1,641	86.01%	1,726	90.46%	1,461	76.57%	1,589	83.28%
SHASTA	1,097	949	86.51%	983	89.61%	988	90.06%	1,004	91.52%	967	88.15%	968	88.24%
SIERRA	27	27	100.00%	27	100.00%	26	96.30%	27	100.00%	27	100.00%	26	96.30%
SISKIYOU	293	240	81.91%	267	91.13%	259	88.40%	268	91.47%	252	86.01%	234	79.86%
SOLANO	2,026	1,837	90.67%	1,915	94.52%	1,918	94.67%	1,953	96.40%	1,867	92.15%	1,915	94.52%
SONOMA	4,990	4,660	93.39%	4,695	94.09%	4,739	94.97%	4,777	95.73%	4,501	90.20%	4,658	93.35%
STANISLAUS	3,022	2,779	91.96%	2,863	94.74%	2,857	94.54%	2,912	96.36%	2,820	93.32%	2,798	92.59%
SUTTER	501	448	89.42%	475	94.81%	474	94.61%	482	96.21%	469	93.61%	470	93.81%
TEHAMA	186	181	97.31%	182	97.85%	180	96.77%	183	98.39%	181	97.31%	180	96.77%
TRINITY	28	20	71.43%	22	78.57%	23	82.14%	25	89.29%	23	82.14%	22	78.57%
TULARE	1,638	1,575	96.15%	1,595	97.37%	1,592	97.19%	1,604	97.92%	1,578	96.34%	1,595	97.37%
TUOLUMNE	225	167	74.22%	196	87.11%	202	89.78%	211	93.78%	187	83.11%	177	78.67%
VENTURA	7,826	7,088	90.57%	7,247	92.60%	7,290	93.15%	7,441	95.08%	7,105	90.79%	7,190	91.87%
YOLO	1,395	1,321	94.70%	1,332	95.48%	1,331	95.41%	1,362	97.63%	1,317	94.41%	1,332	95.48%
YUBA	154	146	94.81%	148	96.10%	150	97.40%	153	99.35%	150	97.40%	151	98.05%
BERKELEY CITY	1,910	1,783	93.35%	1,762	92.25%	1,808	94.66%	1,837	96.18%	1,651	86.44%	1,735	90.84%

TABLE 3c: CHILDREN ADEQUATELY IMMUNIZED  
BY COUNTY FOR HEAD START CHILD CARE CENTERS

	TOTAL CHILDREN	DTP 4+		POLIO 3+		MMR 1+		HIB 1+		HEP B 3+		VAR 1+	
	NUMBER	NUMBER	PERCENT	NUMBER	PERCENT	NUMBER	PERCENT	NUMBER	PERCENT	NUMBER	PERCENT	NUMBER	PERCENT
STATE TOTAL	75,829	74,172	97.81%	74,988	98.89%	75,045	98.97%	74,797	98.64%	74,768	98.60%	74,969	98.87%
COUNTY													
ALAMEDA	2,655	2,532	95.37%	2,600	97.93%	2,601	97.97%	2,634	99.21%	2,572	96.87%	2,591	97.59%
ALPINE	0	0	0.00%	0	0.00%	0	0.00%	0	0.00%	0	0.00%	0	0.00%
AMADOR	51	51	100.00%	51	100.00%	51	100.00%	51	100.00%	51	100.00%	51	100.00%
BUTTE	464	455	98.06%	457	98.49%	456	98.28%	457	98.49%	456	98.28%	456	98.28%
CALAVERAS	136	125	91.91%	127	93.38%	128	94.12%	129	94.85%	126	92.65%	127	93.38%
COLUSA	173	168	97.11%	171	98.84%	169	97.69%	171	98.84%	170	98.27%	170	98.27%
CONTRA COSTA	1,220	1,212	99.34%	1,217	99.75%	1,217	99.75%	1,217	99.75%	1,215	99.59%	1,217	99.75%
DEL NORTE	60	54	90.00%	58	96.67%	57	95.00%	58	96.67%	58	96.67%	56	93.33%
EL DORADO	350	331	94.57%	338	96.57%	340	97.14%	333	95.14%	338	96.57%	340	97.14%
FRESNO	2,107	2,097	99.53%	2,105	99.91%	2,107	100.00%	2,107	100.00%	2,106	99.95%	2,107	100.00%
GLENN	175	175	100.00%	175	100.00%	175	100.00%	175	100.00%	175	100.00%	175	100.00%
HUMBOLDT	368	323	87.77%	330	89.67%	329	89.40%	333	90.49%	326	88.59%	329	89.40%
IMPERIAL	670	663	98.96%	668	99.70%	670	100.00%	670	100.00%	665	99.25%	670	100.00%
INYO	55	54	98.18%	54	98.18%	54	98.18%	54	98.18%	54	98.18%	54	98.18%
KERN	2,352	2,308	98.13%	2,342	99.57%	2,346	99.74%	2,347	99.79%	2,342	99.57%	2,346	99.74%
KINGS	505	471	93.27%	489	96.83%	492	97.43%	495	98.02%	490	97.03%	492	97.43%
LAKE	145	136	93.79%	140	96.55%	139	95.86%	140	96.55%	139	95.86%	139	95.86%
LASSEN	120	110	91.67%	115	95.83%	112	93.33%	116	96.67%	115	95.83%	111	92.50%
LOS ANGELES	25,158	24,524	97.48%	24,849	98.77%	24,846	98.76%	24,539	97.54%	24,738	98.33%	24,806	98.60%
MADERA	515	513	99.61%	513	99.61%	513	99.61%	511	99.22%	513	99.61%	513	99.61%
MARIN	232	222	95.69%	226	97.41%	226	97.41%	227	97.84%	225	96.98%	225	96.98%
MARIPOSA	31	26	83.87%	28	90.32%	28	90.32%	28	90.32%	28	90.32%	28	90.32%
MENDOCINO	247	242	97.98%	242	97.98%	245	99.19%	245	99.19%	244	98.79%	245	99.19%
MERCED	1,094	1,075	98.26%	1,089	99.54%	1,091	99.73%	1,092	99.82%	1,085	99.18%	1,091	99.73%
MODOC	0	0	0.00%	0	0.00%	0	0.00%	0	0.00%	0	0.00%	0	0.00%
MONO	19	18	94.74%	19	100.00%	19	100.00%	19	100.00%	19	100.00%	19	100.00%
MONTEREY	675	673	99.70%	674	99.85%	674	99.85%	673	99.70%	674	99.85%	674	99.85%
NAPA	251	250	99.60%	251	100.00%	250	99.60%	251	100.00%	250	99.60%	250	99.60%
NEVADA	35	31	88.57%	34	97.14%	33	94.29%	34	97.14%	34	97.14%	31	88.57%
ORANGE	3,083	3,040	98.61%	3,067	99.48%	3,071	99.61%	3,061	99.29%	3,067	99.48%	3,071	99.61%
PLACER	246	224	91.06%	229	93.09%	229	93.09%	230	93.50%	229	93.09%	229	93.09%

TABLE 3c: CHILDREN ADEQUATELY IMMUNIZED  
BY COUNTY FOR HEAD START CHILD CARE CENTERS

	TOTAL CHILDREN	DTP 4+		POLIO 3+		MMR 1+		HIB 1+		HEP B 3+		VAR 1+	
	NUMBER	NUMBER	PERCENT	NUMBER	PERCENT	NUMBER	PERCENT	NUMBER	PERCENT	NUMBER	PERCENT	NUMBER	PERCENT
STATE TOTAL	75,829	74,172	97.81%	74,988	98.89%	75,045	98.97%	74,797	98.64%	74,768	98.60%	74,969	98.87%
COUNTY													
PLUMAS	56	44	78.57%	52	92.86%	53	94.64%	54	96.43%	54	96.43%	51	91.07%
RIVERSIDE	2,715	2,650	97.61%	2,683	98.82%	2,692	99.15%	2,695	99.26%	2,680	98.71%	2,688	99.01%
SACRAMENTO	3,847	3,779	98.23%	3,800	98.78%	3,809	99.01%	3,802	98.83%	3,803	98.86%	3,810	99.04%
SAN BENITO	113	112	99.12%	112	99.12%	112	99.12%	112	99.12%	112	99.12%	112	99.12%
SAN BERNARDINO	4,399	4,334	98.52%	4,358	99.07%	4,365	99.23%	4,362	99.16%	4,355	99.00%	4,367	99.27%
SAN DIEGO	6,946	6,806	97.98%	6,882	99.08%	6,882	99.08%	6,902	99.37%	6,860	98.76%	6,881	99.06%
SAN FRANCISCO	936	931	99.47%	936	100.00%	935	99.89%	936	100.00%	929	99.25%	935	99.89%
SAN JOAQUIN	2,114	2,080	98.39%	2,102	99.43%	2,105	99.57%	2,105	99.57%	2,102	99.43%	2,105	99.57%
SAN LUIS OBISPO	351	348	99.15%	350	99.72%	351	100.00%	351	100.00%	350	99.72%	351	100.00%
SAN MATEO	573	572	99.83%	573	100.00%	573	100.00%	573	100.00%	573	100.00%	572	99.83%
SANTA BARBARA	898	892	99.33%	896	99.78%	897	99.89%	897	99.89%	897	99.89%	897	99.89%
SANTA CLARA	1,641	1,624	98.96%	1,632	99.45%	1,640	99.94%	1,639	99.88%	1,636	99.70%	1,639	99.88%
SANTA CRUZ	497	461	92.76%	470	94.57%	471	94.77%	479	96.38%	455	91.55%	468	94.16%
SHASTA	475	453	95.37%	464	97.68%	464	97.68%	463	97.47%	462	97.26%	465	97.89%
SIERRA	0	0	0.00%	0	0.00%	0	0.00%	0	0.00%	0	0.00%	0	0.00%
SISKIYOU	58	56	96.55%	56	96.55%	56	96.55%	56	96.55%	55	94.83%	53	91.38%
SOLANO	599	592	98.83%	592	98.83%	595	99.33%	594	99.17%	592	98.83%	595	99.33%
SONOMA	507	500	98.62%	501	98.82%	501	98.82%	501	98.82%	500	98.62%	501	98.82%
STANISLAUS	1,965	1,948	99.13%	1,956	99.54%	1,960	99.75%	1,958	99.64%	1,952	99.34%	1,958	99.64%
SUTTER	294	291	98.98%	293	99.66%	292	99.32%	293	99.66%	293	99.66%	293	99.66%
TEHAMA	238	232	97.48%	234	98.32%	234	98.32%	235	98.74%	233	97.90%	234	98.32%
TRINITY	32	26	81.25%	29	90.63%	27	84.38%	28	87.50%	29	90.63%	28	87.50%
TULARE	1,548	1,541	99.55%	1,544	99.74%	1,546	99.87%	1,545	99.81%	1,531	98.90%	1,544	99.74%
TUOLUMNE	114	107	93.86%	110	96.49%	108	94.74%	111	97.37%	110	96.49%	109	95.61%
VENTURA	1,156	1,141	98.70%	1,148	99.31%	1,150	99.48%	1,149	99.39%	1,145	99.05%	1,143	98.88%
YOLO	321	314	97.82%	318	99.07%	319	99.38%	320	99.69%	319	99.38%	319	99.38%
YUBA	173	170	98.27%	171	98.84%	171	98.84%	171	98.84%	171	98.84%	170	98.27%
BERKELEY CITY	71	65	91.55%	68	95.77%	69	97.18%	69	97.18%	66	92.96%	68	95.77%

TABLE 4: NUMBER OF CENTERS REPORTING  
BY COUNTY AND TYPE

	TOTAL NUMBER OF CENTERS	CENTER TYPE					
		PUBLIC		PRIVATE		HEAD START	
		NUMBER OF CENTERS	PERCENT OF TOTAL	NUMBER OF CENTERS	PERCENT OF TOTAL	NUMBER OF CENTERS	PERCENT OF TOTAL
STATE TOTAL	9,498	2,209	23.26%	5,866	61.76%	1,423	14.98%
COUNTY							
ALAMEDA	412	60	14.56%	303	73.54%	49	11.89%
ALPINE	0	0	0.00%	0	0.00%	0	0.00%
AMADOR	15	5	33.33%	6	40.00%	4	26.67%
BUTTE	76	18	23.68%	44	57.89%	14	18.42%
CALAVERAS	16	4	25.00%	5	31.25%	7	43.75%
COLUSA	10	1	10.00%	1	10.00%	8	80.00%
CONTRA COSTA	298	48	16.11%	229	76.85%	21	7.05%
DEL NORTE	10	3	30.00%	3	30.00%	4	40.00%
EL DORADO	56	10	17.86%	37	66.07%	9	16.07%
FRESNO	273	122	44.69%	109	39.93%	42	15.38%
GLENN	11	1	9.09%	3	27.27%	7	63.64%
HUMBOLDT	55	12	21.82%	28	50.91%	15	27.27%
IMPERIAL	58	13	22.41%	31	53.45%	14	24.14%
INYO	13	7	53.85%	3	23.08%	3	23.08%
KERN	180	60	33.33%	72	40.00%	48	26.67%
KINGS	43	15	34.88%	18	41.86%	10	23.26%
LAKE	20	10	50.00%	4	20.00%	6	30.00%
LASSEN	10	2	20.00%	4	40.00%	4	40.00%
LOS ANGELES	2,165	388	17.92%	1,365	63.05%	412	19.03%
MADERA	46	14	30.43%	15	32.61%	17	36.96%
MARIN	111	13	11.71%	88	79.28%	10	9.01%
MARIPOSA	5	3	60.00%	1	20.00%	1	20.00%
MENDOCINO	31	15	48.39%	10	32.26%	6	19.35%
MERCED	66	35	53.03%	13	19.70%	18	27.27%
MODOC	7	6	85.71%	1	14.29%	0	0.00%
MONO	5	2	40.00%	2	40.00%	1	20.00%
MONTEREY	119	61	51.26%	45	37.82%	13	10.92%
NAPA	52	13	25.00%	34	65.38%	5	9.62%
NEVADA	32	10	31.25%	19	59.38%	3	9.38%

TABLE 4: NUMBER OF CENTERS REPORTING  
BY COUNTY AND TYPE

	TOTAL NUMBER OF CENTERS	CENTER TYPE					
		PUBLIC		PRIVATE		HEAD START	
		NUMBER OF CENTERS	PERCENT OF TOTAL	NUMBER OF CENTERS	PERCENT OF TOTAL	NUMBER OF CENTERS	PERCENT OF TOTAL
STATE TOTAL	9,498	2,209	23.26%	5,866	61.76%	1,423	14.98%
COUNTY							
ORANGE	735	183	24.90%	517	70.34%	35	4.76%
PLACER	92	10	10.87%	70	76.09%	12	13.04%
PLUMAS	8	5	62.50%	1	12.50%	2	25.00%
RIVERSIDE	353	110	31.16%	193	54.67%	50	14.16%
SACRAMENTO	383	66	17.23%	232	60.57%	85	22.19%
SAN BENITO	15	8	53.33%	6	40.00%	1	6.67%
SAN BERNARDINO	382	171	44.76%	171	44.76%	40	10.47%
SAN DIEGO	820	184	22.44%	534	65.12%	102	12.44%
SAN FRANCISCO	255	50	19.61%	181	70.98%	24	9.41%
SAN JOAQUIN	211	62	29.38%	90	42.65%	59	27.96%
SAN LUIS OBISPO	71	13	18.31%	47	66.20%	11	15.49%
SAN MATEO	244	41	16.80%	192	78.69%	11	4.51%
SANTA BARBARA	141	17	12.06%	99	70.21%	25	17.73%
SANTA CLARA	536	68	12.69%	443	82.65%	25	4.66%
SANTA CRUZ	95	24	25.26%	57	60.00%	14	14.74%
SHASTA	70	24	34.29%	30	42.86%	16	22.86%
SIERRA	1	0	0.00%	1	100.00%	0	0.00%
SISKIYOU	21	8	38.10%	10	47.62%	3	14.29%
SOLANO	83	23	27.71%	45	54.22%	15	18.07%
SONOMA	139	13	9.35%	114	82.01%	12	8.63%
STANISLAUS	123	27	21.95%	60	48.78%	36	29.27%
SUTTER	33	11	33.33%	17	51.52%	5	15.15%
TEHAMA	25	12	48.00%	4	16.00%	9	36.00%
TRINITY	5	2	40.00%	1	20.00%	2	40.00%
TULARE	101	38	37.62%	29	28.71%	34	33.66%
TUOLUMNE	17	4	23.53%	7	41.18%	6	35.29%
VENTURA	210	46	21.90%	141	67.14%	23	10.95%
YOLO	56	16	28.57%	31	55.36%	9	16.07%
YUBA	19	12	63.16%	4	21.05%	3	15.79%
BERKELEY CITY	59	10	16.95%	46	77.97%	3	5.08%