

2013- 2014 KINDERGARTEN IMMUNIZATION ASSESSMENT RESULTS
CALIFORNIA DEPARTMENT OF PUBLIC HEALTH, IMMUNIZATION BRANCH

Introduction

The annual kindergarten assessment is conducted each fall to monitor compliance with the California School Immunization Law. Results from this assessment are used to measure immunization coverage among students entering kindergarten. This report presents results from this year’s kindergarten assessment and the attached tables present comparisons of immunization coverage in kindergarten schools by county.

Methods and Participants

This year’s kindergarten assessment was conducted in 7,684 of California’s schools with kindergartens. School staff complete assessment reports and return them to local health departments and the Immunization Branch.

Results and Discussion

Table 1 shows the results from this fall’s kindergarten assessment for the state as a whole and by school type. This year 90.2% of the 533,680 students enrolled in reporting kindergartens received all required immunizations (4+ DTP, 3+ Polio, 2+ MMR, 3+ Hep B, and 1+ Var or physician-documented varicella disease). There were 991 (0.19%) students with permanent medical exemptions and 16,817 (3.15%) students with personal beliefs exemptions. Immunization coverage was above 92% for each vaccine for all schools.

Table 1: Kindergarten Immunization Assessment, 2013-14*

	All	Public	Private
Number of Schools	7,684	5,852	1,832
Number of Students	533,680	491,905	41,775
All Required Immunizations	90.2%	90.6%	85.4%
Conditional Entrants	6.5%	6.3%	8.5%
Permanent Medical Exemptions	0.19%	0.18%	0.29%
Personal Belief Exemptions	3.15%	2.92%	5.88%
4+ DTP	92.2%	92.5%	88.6%
3+ Polio	92.6%	93.0%	88.5%
2+ MMR	92.3%	92.7%	87.6%
3+ Hep B	94.8%	95.0%	91.8%
1+ Vari (or physician-documented disease)	95.3%	95.5%	92.1%

*Individual antigen status is unavailable for students with Personal Beliefs Exemptions. Therefore, individual antigen immunization coverage may be underestimated; anecdotal evidence suggests small percentage of students may have some but not all required immunizations.

Compared with students in private schools, public schools had a higher percentage of students with all required immunizations (Table 1 and Figure 1) as well as students adequately immunized for each vaccine (Figure 2). The highest percentages of students were up-to-date for the 3 dose Hepatitis B series, followed by the 1 dose varicella requirement.

Figure 1: Percentage of California Kindergarten Students with All Required Immunizations By School Type, 2013-14 School Year

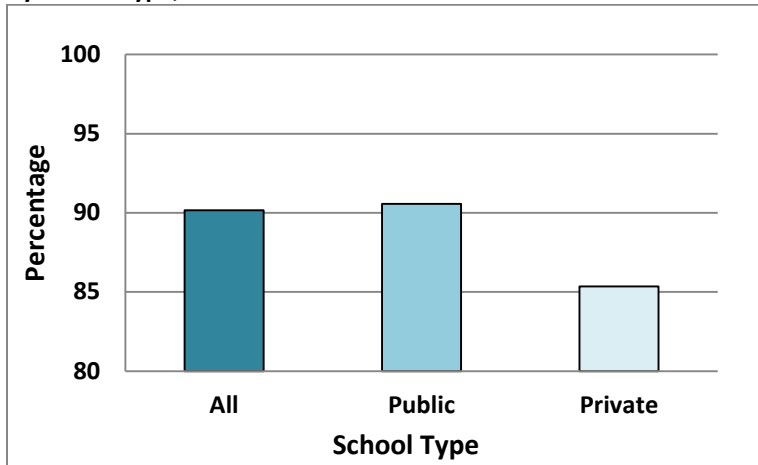
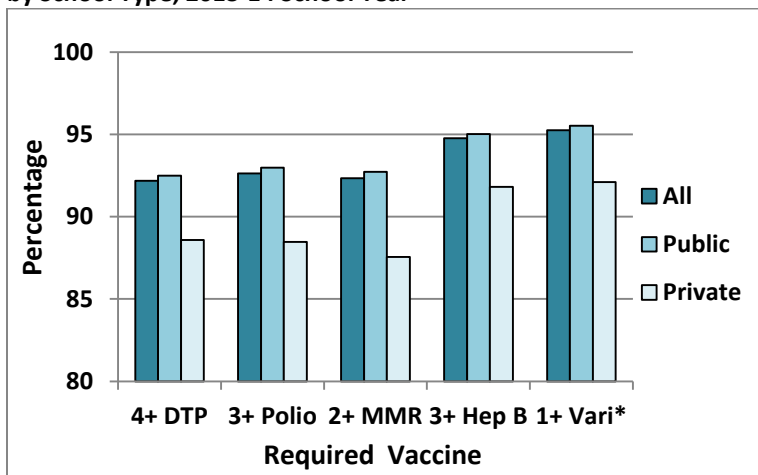


Figure 2: Percentage of California Kindergarten Students Completing Required Vaccine Series by School Type, 2013-14 School Year



*1 or more doses of varicella or physician-documented disease

In addition, compared with kindergarten students in private schools, those in public schools had a lower percentage of conditional entrants (Figure 3) as well as students with permanent medical exemptions (Figure 4) and personal beliefs exemptions (Figure 5). The percentage of conditional entrants in public schools this year was 2.2% lower than private schools. Compared with students in private schools, students in public schools had a lower percentage (0.11%) of students receiving permanent medical exemptions. The percentage of students with personal beliefs exemptions in public schools was 2.96% lower than in private schools

Figure 3: Percentage of Conditional Entrants Among California Kindergarten By School Type, 2013-14 School Year

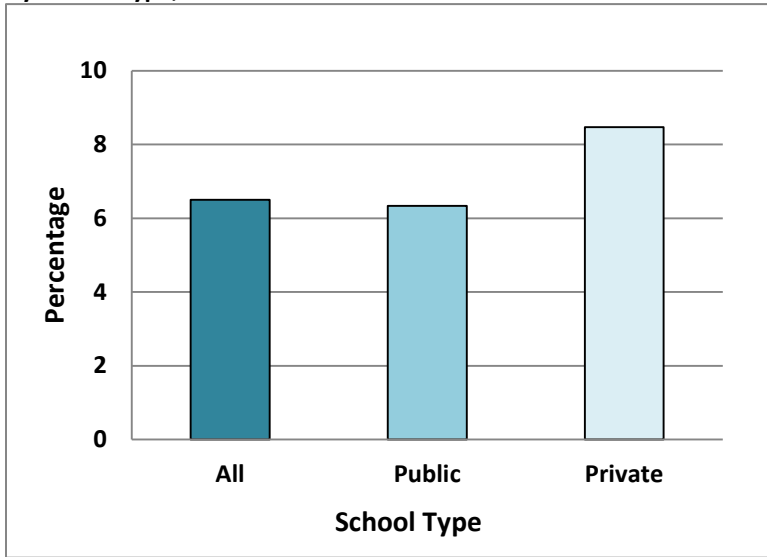


Figure 4: Percentage of California Kindergarten Students with a Permanent Medical Exemption By School Type, 2013-14 School Year

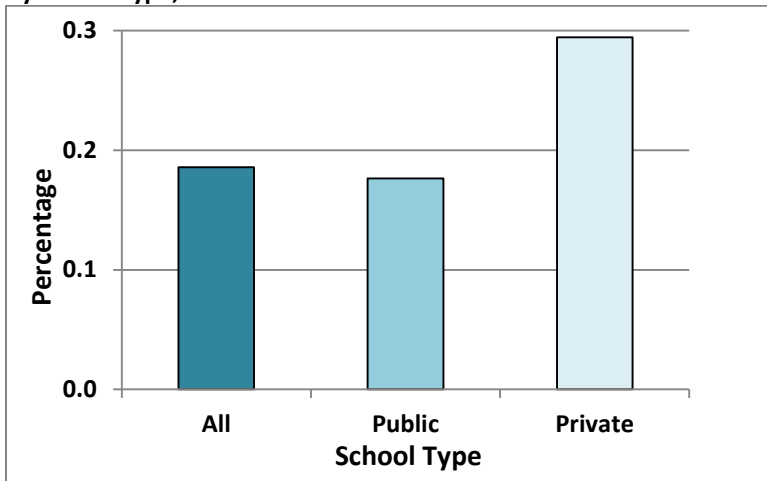
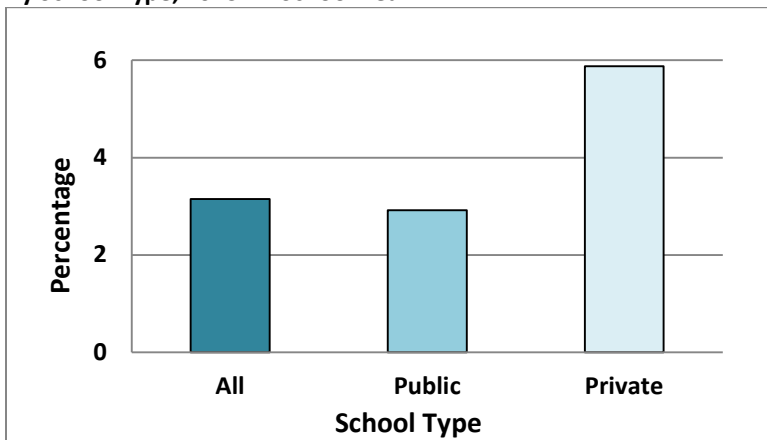
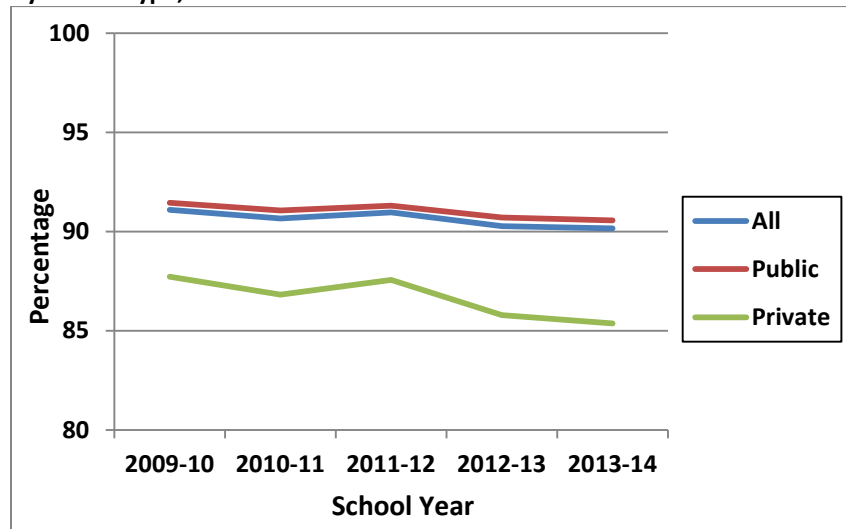


Figure 5: Percentage of California Kindergarten Students with a Personal Beliefs Exemption By School Type, 2013-14 School Year



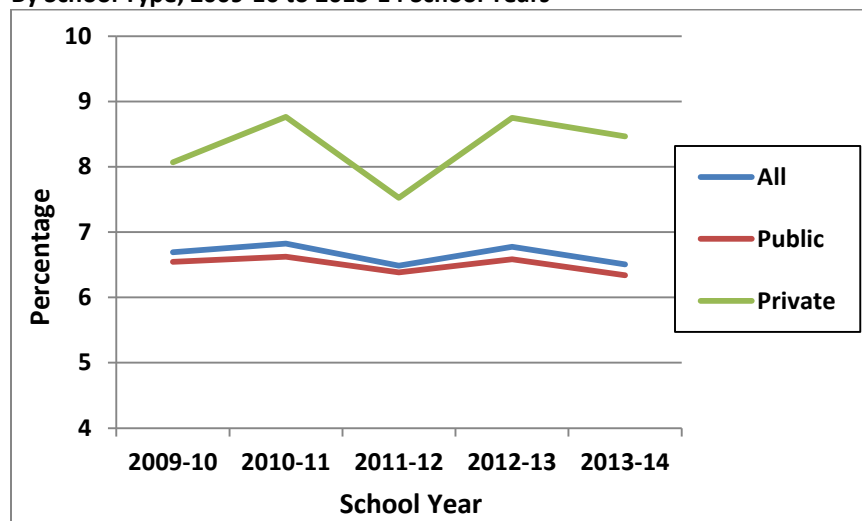
Over the past five years, students with all required immunizations in all reporting schools has decreased slightly from 91.1% in the 2009-10 school year to 90.2% in the 2013-14 school year (Figure 6). Public school students consistently have had higher percentage of students with all required immunizations compared with private school students, ranging from 3.7% higher in the 2009-10 school year to 4.2% higher in the 2013-14 school year. The percentage of students with all required immunizations in private schools has dropped at a faster rate over the past five years compared with public schools (Figure 6).

Figure 6: Percentage of California Kindergartners with All Required Immunizations, By School Type, 2009-10 to 2013-14 School Years



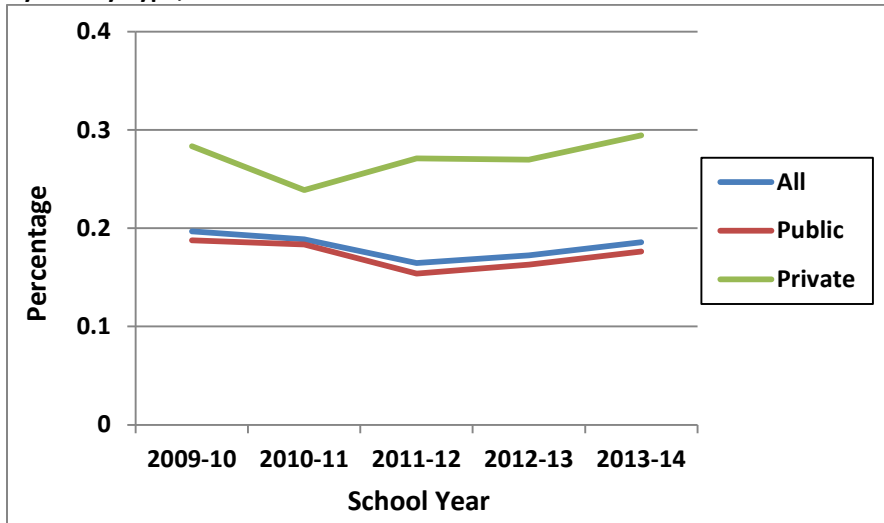
The percentage of conditional entrants in all schools has decreased slightly from 6.7% in the 2009-10 school year to 6.5% in the 2013-14 school year with an overall slight downward trend over the past five years (Figure 7). Students in public schools have consistently had a lower percentage of conditional entrants than students in private schools ranging from 1.6 percent lower in the 2009-10 school year to 2.0 percent lower in the 2013-14 school year with an overall slight downward trend over the past five years. The percentage of conditional students in private school students has increased slightly overall in the past five years.

Figure 7: Percentage of Conditional Entrants Among California Kindergartners By School Type, 2009-10 to 2013-14 School Years



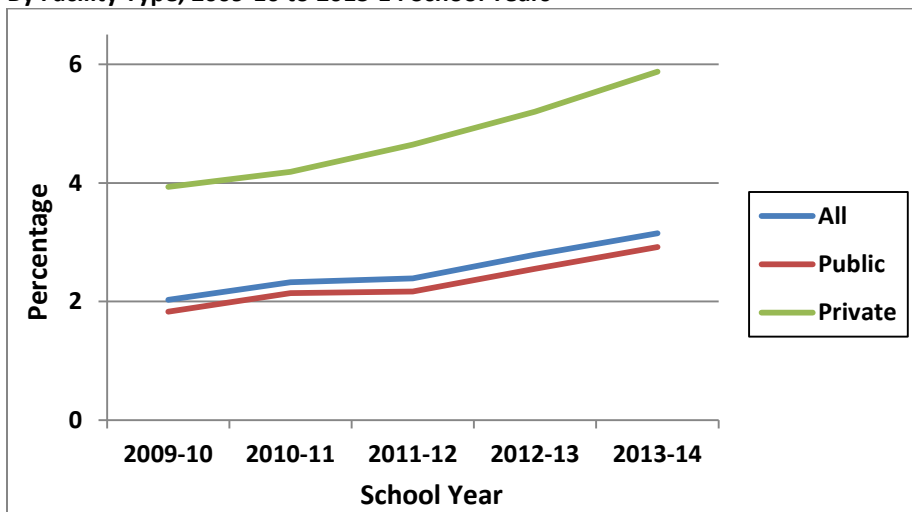
Over the past five years, the percentage of students with a permanent medical exemption has decreased slightly among all reporting schools (Figure 8). The percentage of students in public schools receiving a permanent medical exemption has decreased slightly overall in the past five years. However, among private schools, the percentage of students receiving permanent a medical exemption has increased slightly overall in the past five years.

Figure 8: Percentage of California Kindergartners with Permanent Medical Exemptions, By Facility Type, 2009-10 to 2013-14 School Years



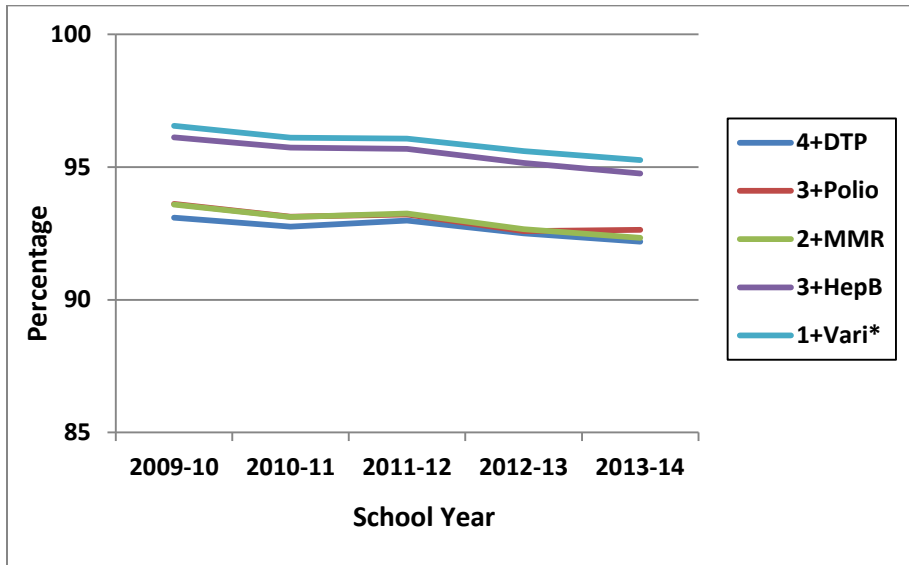
The percentage of students receiving a personal beliefs exemption has consistently increased annually over the past five years and has increased 1.2% since the 2009-10 school year among all reporting schools (Figure 9). Over the past five years, public schools have consistently reported a lower percentage of students with personal beliefs exemptions compared with private schools; the gap has widened slightly from a 2.1% difference in the 2009-10 school year compared with 2.9% difference in the 2013-14 school year.

Figure 9: Percentage of California Kindergartners with Personal Beliefs Exemptions, By Facility Type, 2009-10 to 2013-14 School Years



The percentage of students completing each of the required vaccines has declined steadily since the 2009-10 school year (Figure 10), with the highest percentage of students completing the one dose Varicella requirement followed by students completing the three dose Hepatitis B requirement. The percentage of students receiving each of the required four dose DTP, three dose Polio and two dose MMR vaccines over the past five years have been consistently two to three percent lower than students completing the 1 dose Varicella or 3 Hepatitis B requirement.

Figure 10: Percentage of California Kindergartners Completing Required Vaccines 2009-10 to 2013-14 School Years



*1 or more doses of varicella or physician-documented disease

Description of Attached Tables

Enclosed is a full set of tables showing this year’s results. Table 2 shows total enrollment and admission status by county. Table 3 shows students adequately immunized for each vaccine by county. Table 4 shows the number of schools reporting by county and type (public or private).

For further information, please contact Teresa Lee at (510) 620-3746 or Teresa.Lee2@cdph.ca.gov at the California Department of Public Health, Immunization Branch.

KINDERGARTEN ASSESSMENT - CALIFORNIA, 2013-2014

TABLE 2: TOTAL ENROLLMENT AND ADMISSION STATUS
BY COUNTY

	TOTAL STUDENTS	ENTRANTS WITH ALL REQ. IMMUN.		CONDITIONAL ENTRANTS		ENTRANTS WITH PME		ENTRANTS WITH PBE	
	NUMBER	NUMBER	PERCENT	NUMBER	PERCENT	NUMBER	PERCENT	NUMBER	PERCENT
STATE TOTAL	533,680	481,158	90.16%	34,714	6.50%	991	0.19%	16,817	3.15%
COUNTY									
ALAMEDA	19,585	17,419	88.94%	1,772	9.05%	45	0.23%	349	1.78%
ALPINE	12	10	83.33%	1	8.33%	0	0.00%	1	8.33%
AMADOR	296	243	82.09%	25	8.45%	0	0.00%	28	9.46%
BUTTE	2,702	2,327	86.12%	183	6.77%	3	0.11%	189	6.99%
CALAVERAS	452	346	76.55%	57	12.61%	0	0.00%	49	10.84%
COLUSA	428	421	98.36%	5	1.17%	0	0.00%	2	0.47%
CONTRA COSTA	14,845	13,948	93.96%	538	3.62%	15	0.10%	344	2.32%
DEL NORTE	332	286	86.14%	19	5.72%	0	0.00%	27	8.13%
EL DORADO	2,216	1,810	81.68%	193	8.71%	10	0.45%	203	9.16%
FRESNO	17,854	16,797	94.08%	755	4.23%	12	0.07%	290	1.62%
GLENN	497	481	96.78%	10	2.01%	1	0.20%	5	1.01%
HUMBOLDT	1,635	1,198	73.27%	242	14.80%	1	0.06%	194	11.87%
IMPERIAL	2,963	2,812	94.90%	130	4.39%	2	0.07%	19	0.64%
INYO	195	186	95.38%	5	2.56%	2	1.03%	2	1.03%
KERN	16,221	15,026	92.63%	672	4.14%	87	0.54%	436	2.69%
KINGS	2,760	2,687	97.36%	48	1.74%	1	0.04%	24	0.87%
LAKE	819	708	86.45%	70	8.55%	1	0.12%	40	4.88%
LASSEN	378	327	86.51%	30	7.94%	0	0.00%	21	5.56%
LOS ANGELES	130,645	115,220	88.19%	12,311	9.42%	218	0.17%	2,896	2.22%
MADERA	2,760	2,599	94.17%	100	3.62%	1	0.04%	60	2.17%
MARIN	3,463	2,778	80.22%	420	12.13%	3	0.09%	262	7.57%
MARIPOSA	122	90	73.77%	16	13.11%	0	0.00%	16	13.11%
MENDOCINO	1,179	889	75.40%	178	15.10%	2	0.17%	110	9.33%
MERCED	4,877	4,655	95.45%	165	3.38%	5	0.10%	52	1.07%
MODOC	140	126	90.00%	5	3.57%	1	0.71%	8	5.71%
MONO	148	130	87.84%	6	4.05%	0	0.00%	12	8.11%
MONTEREY	7,004	6,272	89.55%	610	8.71%	6	0.09%	116	1.66%
NAPA	1,737	1,612	92.80%	60	3.45%	0	0.00%	65	3.74%
NEVADA	870	629	72.30%	56	6.44%	0	0.00%	185	21.26%

KINDERGARTEN ASSESSMENT - CALIFORNIA, 2013-2014

TABLE 2: TOTAL ENROLLMENT AND ADMISSION STATUS
BY COUNTY

	TOTAL STUDENTS	ENTRANTS WITH ALL REQ. IMMUN.		CONDITIONAL ENTRANTS		ENTRANTS WITH PME		ENTRANTS WITH PBE	
	NUMBER	NUMBER	PERCENT	NUMBER	PERCENT	NUMBER	PERCENT	NUMBER	PERCENT
STATE TOTAL	533,680	481,158	90.16%	34,714	6.50%	991	0.19%	16,817	3.15%
COUNTY									
ORANGE	43,085	38,219	88.71%	3,185	7.39%	108	0.25%	1,573	3.65%
PLACER	5,587	4,827	86.40%	319	5.71%	12	0.21%	429	7.68%
PLUMAS	157	129	82.17%	12	7.64%	0	0.00%	16	10.19%
RIVERSIDE	33,887	31,622	93.32%	1,238	3.65%	51	0.15%	976	2.88%
SACRAMENTO	19,317	16,522	85.53%	1,724	8.92%	30	0.16%	1,041	5.39%
SAN BENITO	917	880	95.97%	28	3.05%	1	0.11%	8	0.87%
SAN BERNARDINO	32,632	30,476	93.39%	1,173	3.59%	50	0.15%	933	2.86%
SAN DIEGO	43,253	38,916	89.97%	2,291	5.30%	102	0.24%	1,944	4.49%
SAN FRANCISCO	6,588	5,805	88.11%	664	10.08%	11	0.17%	108	1.64%
SAN JOAQUIN	11,022	10,546	95.68%	296	2.69%	14	0.13%	166	1.51%
SAN LUIS OBISPO	2,907	2,487	85.55%	175	6.02%	5	0.17%	240	8.26%
SAN MATEO	9,351	8,433	90.18%	692	7.40%	15	0.16%	211	2.26%
SANTA BARBARA	6,341	5,840	92.10%	194	3.06%	8	0.13%	299	4.72%
SANTA CLARA	26,101	24,152	92.53%	1,437	5.51%	62	0.24%	450	1.72%
SANTA CRUZ	3,637	3,069	84.38%	210	5.77%	11	0.30%	347	9.54%
SHASTA	2,347	1,813	77.25%	324	13.80%	9	0.38%	201	8.56%
SIERRA	28	28	100.00%	0	0.00%	0	0.00%	0	0.00%
SISKIYOU	473	375	79.28%	25	5.29%	1	0.21%	72	15.22%
SOLANO	5,366	5,078	94.63%	200	3.73%	5	0.09%	83	1.55%
SONOMA	6,526	5,839	89.47%	281	4.31%	12	0.18%	394	6.04%
STANISLAUS	9,146	8,558	93.57%	189	2.07%	26	0.28%	373	4.08%
SUTTER	1,739	1,569	90.22%	42	2.42%	1	0.06%	127	7.30%
TEHAMA	1,015	947	93.30%	24	2.36%	1	0.10%	43	4.24%
TRINITY	117	87	74.36%	8	6.84%	0	0.00%	22	18.80%
TULARE	8,751	8,449	96.55%	156	1.78%	10	0.11%	136	1.55%
TUOLUMNE	532	405	76.13%	44	8.27%	1	0.19%	82	15.41%
VENTURA	11,873	10,522	88.62%	914	7.70%	26	0.22%	411	3.46%
YOLO	2,563	2,346	91.53%	120	4.68%	3	0.12%	94	3.67%
YUBA	1,287	1,187	92.23%	67	5.21%	0	0.00%	33	2.56%

KINDERGARTEN ASSESSMENT - CALIFORNIA, 2013-2014

TABLE 3: STUDENTS ADEQUATELY IMMUNIZED
BY COUNTY

	TOTAL STUDENTS	DTP 4+		POLIO 3+		MMR 2		HEP B 3+		VAR 1+	
	NUMBER	NUMBER	PERCENT	NUMBER	PERCENT	NUMBER	PERCENT	NUMBER	PERCENT	NUMBER	PERCENT
STATE TOTAL	533,680	491,985	92.19%	494,356	92.63%	492,757	92.33%	505,734	94.76%	508,410	95.26%
COUNTY											
ALAMEDA	19,585	17,921	91.50%	18,070	92.26%	18,075	92.29%	18,406	93.98%	18,633	95.14%
ALPINE	12	10	83.33%	10	83.33%	10	83.33%	10	83.33%	10	83.33%
AMADOR	296	250	84.46%	251	84.80%	245	82.77%	258	87.16%	263	88.85%
BUTTE	2,702	2,390	88.45%	2,396	88.68%	2,374	87.86%	2,454	90.82%	2,461	91.08%
CALAVERAS	452	357	78.98%	365	80.75%	353	78.10%	383	84.73%	392	86.73%
COLUSA	428	423	98.83%	423	98.83%	423	98.83%	424	99.07%	426	99.53%
CONTRA COSTA	14,845	14,118	95.10%	14,170	95.45%	14,156	95.36%	14,334	96.56%	14,400	97.00%
DEL NORTE	332	291	87.65%	290	87.35%	294	88.55%	296	89.16%	294	88.55%
EL DORADO	2,216	1,861	83.98%	1,877	84.70%	1,845	83.26%	1,955	88.22%	1,963	88.58%
FRESNO	17,854	16,949	94.93%	17,011	95.28%	17,054	95.52%	17,237	96.54%	17,291	96.85%
GLENN	497	481	96.78%	486	97.79%	486	97.79%	489	98.39%	490	98.59%
HUMBOLDT	1,635	1,268	77.55%	1,284	78.53%	1,246	76.21%	1,366	83.55%	1,362	83.30%
IMPERIAL	2,963	2,870	96.86%	2,881	97.23%	2,853	96.29%	2,926	98.75%	2,926	98.75%
INYO	195	188	96.41%	189	96.92%	188	96.41%	188	96.41%	187	95.90%
KERN	16,221	15,253	94.03%	15,352	94.64%	15,145	93.37%	15,508	95.60%	15,539	95.80%
KINGS	2,760	2,699	97.79%	2,706	98.04%	2,708	98.12%	2,719	98.51%	2,727	98.80%
LAKE	819	724	88.40%	732	89.38%	723	88.28%	759	92.67%	760	92.80%
LASSEN	378	333	88.10%	333	88.10%	333	88.10%	346	91.53%	349	92.33%
LOS ANGELES	130,645	119,353	91.36%	119,940	91.81%	119,685	91.61%	123,926	94.86%	124,810	95.53%
MADERA	2,760	2,628	95.22%	2,636	95.51%	2,630	95.29%	2,671	96.78%	2,676	96.96%
MARIN	3,463	2,940	84.90%	2,954	85.30%	2,944	85.01%	3,048	88.02%	3,106	89.69%
MARIPOSA	122	98	80.33%	92	75.41%	99	81.15%	101	82.79%	100	81.97%
MENDOCINO	1,179	912	77.35%	911	77.27%	923	78.29%	1,037	87.96%	1,043	88.46%
MERCED	4,877	4,682	96.00%	4,712	96.62%	4,699	96.35%	4,788	98.18%	4,805	98.52%
MODOC	140	127	90.71%	127	90.71%	128	91.43%	129	92.14%	128	91.43%
MONO	148	133	89.86%	132	89.19%	133	89.86%	133	89.86%	134	90.54%
MONTEREY	7,004	6,479	92.50%	6,472	92.40%	6,449	92.08%	6,742	96.26%	6,764	96.57%
NAPA	1,737	1,626	93.61%	1,635	94.13%	1,632	93.96%	1,652	95.11%	1,664	95.80%
NEVADA	870	646	74.25%	641	73.68%	641	73.68%	674	77.47%	662	76.09%

KINDERGARTEN ASSESSMENT - CALIFORNIA, 2013-2014

TABLE 3: STUDENTS ADEQUATELY IMMUNIZED
BY COUNTY

	TOTAL STUDENTS	DTP 4+		POLIO 3+		MMR 2		HEP B 3+		VAR 1+	
	NUMBER	NUMBER	PERCENT	NUMBER	PERCENT	NUMBER	PERCENT	NUMBER	PERCENT	NUMBER	PERCENT
STATE TOTAL	533,680	491,985	92.19%	494,356	92.63%	492,757	92.33%	505,734	94.76%	508,410	95.26%
COUNTY											
ORANGE	43,085	39,203	90.99%	39,461	91.59%	39,221	91.03%	40,733	94.54%	40,970	95.09%
PLACER	5,587	4,913	87.94%	4,955	88.69%	4,907	87.83%	5,050	90.39%	5,082	90.96%
PLUMAS	157	132	84.08%	134	85.35%	133	84.71%	138	87.90%	139	88.54%
RIVERSIDE	33,887	32,087	94.69%	32,211	95.05%	32,132	94.82%	32,543	96.03%	32,677	96.43%
SACRAMENTO	19,317	16,871	87.34%	17,098	88.51%	16,873	87.35%	17,861	92.46%	17,990	93.13%
SAN BENITO	917	886	96.62%	889	96.95%	888	96.84%	901	98.26%	902	98.36%
SAN BERNARDINO	32,632	30,802	94.39%	30,960	94.88%	30,856	94.56%	31,227	95.69%	31,396	96.21%
SAN DIEGO	43,253	39,720	91.83%	39,797	92.01%	39,658	91.69%	40,549	93.75%	40,771	94.26%
SAN FRANCISCO	6,588	5,975	90.70%	5,964	90.53%	6,082	92.32%	6,098	92.56%	6,119	92.88%
SAN JOAQUIN	11,022	10,631	96.45%	10,648	96.61%	10,643	96.56%	10,775	97.76%	10,819	98.16%
SAN LUIS OBISPO	2,907	2,531	87.07%	2,521	86.72%	2,535	87.20%	2,629	90.44%	2,640	90.82%
SAN MATEO	9,351	8,684	92.87%	8,778	93.87%	8,722	93.27%	8,990	96.14%	9,030	96.57%
SANTA BARBARA	6,341	5,892	92.92%	5,914	93.27%	5,890	92.89%	5,946	93.77%	5,974	94.21%
SANTA CLARA	26,101	24,641	94.41%	24,746	94.81%	24,720	94.71%	25,084	96.10%	25,179	96.47%
SANTA CRUZ	3,637	3,150	86.61%	3,144	86.44%	3,137	86.25%	3,214	88.37%	3,226	88.70%
SHASTA	2,347	1,882	80.19%	1,892	80.61%	1,880	80.10%	2,048	87.26%	2,040	86.92%
SIERRA	28	28	100.00%	28	100.00%	28	100.00%	28	100.00%	28	100.00%
SISKIYOU	473	383	80.97%	388	82.03%	380	80.34%	392	82.88%	391	82.66%
SOLANO	5,366	5,133	95.66%	5,168	96.31%	5,139	95.77%	5,235	97.56%	5,245	97.75%
SONOMA	6,526	5,936	90.96%	5,940	91.02%	5,923	90.76%	6,022	92.28%	6,037	92.51%
STANISLAUS	9,146	8,605	94.08%	8,624	94.29%	8,609	94.13%	8,716	95.30%	8,734	95.50%
SUTTER	1,739	1,587	91.26%	1,594	91.66%	1,580	90.86%	1,605	92.29%	1,604	92.24%
TEHAMA	1,015	963	94.88%	963	94.88%	958	94.38%	961	94.68%	967	95.27%
TRINITY	117	88	75.21%	88	75.21%	89	76.07%	93	79.49%	92	78.63%
TULARE	8,751	8,492	97.04%	8,519	97.35%	8,512	97.27%	8,566	97.89%	8,576	98.00%
TUOLUMNE	532	408	76.69%	411	77.26%	411	77.26%	438	82.33%	437	82.14%
VENTURA	11,873	10,763	90.65%	10,835	91.26%	10,793	90.90%	11,260	94.84%	11,291	95.10%
YOLO	2,563	2,382	92.94%	2,389	93.21%	2,380	92.86%	2,430	94.81%	2,441	95.24%
YUBA	1,287	1,207	93.78%	1,219	94.72%	1,204	93.55%	1,243	96.58%	1,248	96.97%

TABLE 4: NUMBER OF SCHOOLS REPORTING
BY COUNTY AND TYPE

	TOTAL NUMBER OF SCHOOLS	SCHOOL TYPE			
		PUBLIC		PRIVATE	
		NUMBER OF SCHOOLS	PERCENT OF TOTAL	NUMBER OF SCHOOLS	PERCENT OF TOTAL
STATE TOTAL	7,684	5,852	76.16%	1,832	23.84%
COUNTY					
ALAMEDA	298	212	71.14%	86	28.86%
ALPINE	1	1	100.00%	0	0.00%
AMADOR	7	7	100.00%	0	0.00%
BUTTE	56	46	82.14%	10	17.86%
CALAVERAS	11	11	100.00%	0	0.00%
COLUSA	7	6	85.71%	1	14.29%
CONTRA COSTA	208	155	74.52%	53	25.48%
DEL NORTE	10	10	100.00%	0	0.00%
EL DORADO	40	34	85.00%	6	15.00%
FRESNO	224	201	89.73%	23	10.27%
GLENN	12	11	91.67%	1	8.33%
HUMBOLDT	55	48	87.27%	7	12.73%
IMPERIAL	46	39	84.78%	7	15.22%
INYO	7	7	100.00%	0	0.00%
KERN	179	152	84.92%	27	15.08%
KINGS	37	32	86.49%	5	13.51%
LAKE	16	14	87.50%	2	12.50%
LASSEN	12	12	100.00%	0	0.00%
LOS ANGELES	1,770	1,253	70.79%	517	29.21%
MADERA	36	33	91.67%	3	8.33%
MARIN	70	46	65.71%	24	34.29%
MARIPOSA	5	5	100.00%	0	0.00%
MENDOCINO	31	27	87.10%	4	12.90%
MERCED	60	54	90.00%	6	10.00%
MODOC	6	4	66.67%	2	33.33%
MONO	6	5	83.33%	1	16.67%
MONTEREY	93	79	84.95%	14	15.05%
NAPA	37	25	67.57%	12	32.43%
NEVADA	26	22	84.62%	4	15.38%

KINDERGARTEN ASSESSMENT - CALIFORNIA, 2013-2014

TABLE 4: NUMBER OF SCHOOLS REPORTING
BY COUNTY AND TYPE

	TOTAL NUMBER OF SCHOOLS	SCHOOL TYPE			
		PUBLIC		PRIVATE	
		NUMBER OF SCHOOLS	PERCENT OF TOTAL	NUMBER OF SCHOOLS	PERCENT OF TOTAL
STATE TOTAL	7,684	5,852	76.16%	1,832	23.84%
COUNTY					
ORANGE	598	394	65.89%	204	34.11%
PLACER	89	77	86.52%	12	13.48%
PLUMAS	5	4	80.00%	1	20.00%
RIVERSIDE	373	293	78.55%	80	21.45%
SACRAMENTO	293	228	77.82%	65	22.18%
SAN BENITO	20	17	85.00%	3	15.00%
SAN BERNARDINO	423	345	81.56%	78	18.44%
SAN DIEGO	599	460	76.79%	139	23.21%
SAN FRANCISCO	145	75	51.72%	70	48.28%
SAN JOAQUIN	177	155	87.57%	22	12.43%
SAN LUIS OBISPO	58	46	79.31%	12	20.69%
SAN MATEO	158	109	68.99%	49	31.01%
SANTA BARBARA	99	78	78.79%	21	21.21%
SANTA CLARA	365	251	68.77%	114	31.23%
SANTA CRUZ	60	46	76.67%	14	23.33%
SHASTA	56	47	83.93%	9	16.07%
SIERRA	2	2	100.00%	0	0.00%
SISKIYOU	27	25	92.59%	2	7.41%
SOLANO	73	57	78.08%	16	21.92%
SONOMA	126	106	84.13%	20	15.87%
STANISLAUS	123	111	90.24%	12	9.76%
SUTTER	31	28	90.32%	3	9.68%
TEHAMA	24	23	95.83%	1	4.17%
TRINITY	10	10	100.00%	0	0.00%
TULARE	116	109	93.97%	7	6.03%
TUOLUMNE	17	13	76.47%	4	23.53%
VENTURA	185	136	73.51%	49	26.49%
YOLO	41	32	78.05%	9	21.95%
YUBA	25	24	96.00%	1	4.00%