

2014- 2015 7<sup>TH</sup> GRADE IMMUNIZATION ASSESSMENT RESULTS  
CALIFORNIA DEPARTMENT OF PUBLIC HEALTH, IMMUNIZATION BRANCH

### Introduction

Under Assembly Bill 354 (2010), California Health and Safety Code Section 120335 required students in 7-12<sup>th</sup> grade during the 2011-2012 school year and 7<sup>th</sup> grade for future years to provide documentation of either having received a booster immunization against pertussis or an exemption to immunization. The pertussis booster immunization recommended for adolescents is known as 'Tdap'. Under Assembly Bill 2109 (2012), California Health and Safety Code Section 120335 modified the process of obtaining a personal beliefs exemption (PBE) to immunization and requires documentation that health care practitioners have informed parents about vaccines and diseases. A religious exemption option was added when the bill was signed. This report summarizes the 7<sup>th</sup> grade pertussis booster (Tdap) immunization status of students based on reporting from California schools. The attached tables present immunization rates by county.

### Methods

Staff from 4,575 of 5122 of California's schools with 7<sup>th</sup> graders (89%, Table 2) submitted immunization assessment reports to local health departments and CDPH Immunization Branch. Students were considered to have completed the Tdap immunization requirement if they had received one dose of any immunization (Tdap, DTaP or DTP) that protects against pertussis on or after their 7<sup>th</sup> birthday. Changes to this year's report include several new PBE measures. Pursuant to the new PBE law, in addition to the standard PBE totals measure, students with PBEs were placed into one of two new PBE subcategories (see Tables 3, 4, and 5): 1) students whose parents received documented vaccine counseling from a qualified health care practitioner with the last 6 months ('Health Care Practitioner Counseled' PBE), or 2) students whose parents declared an objection to seeking medical advice or treatment from authorized health care practitioners ('Religious' PBE).

### Results

Table 1 summarizes the results from the 2014-15 7<sup>th</sup> Grade Immunization Assessment. Of 489,643 students enrolled in the 4,575 schools that reported, 478,689 (97.8%) completed the pertussis immunization (Tdap) requirement. There were 709 (0.14%) students with permanent medical exemptions (PMEs) and 10,245 (2.09%) students with a personal beliefs exemption (PBEs) during 2014-15. Compared to past years, in 2014-15 there was a marked increase (+1.2%) in the percent of students completing the pertussis immunization requirement (Figure 1). This increase in pertussis booster immunized students was accompanied by a decline of 1.17% in the percentage of students who took a PBE. This decline in PBEs was in marked contrast to the 3 prior years where 7<sup>th</sup> graders were required to have pertussis booster immunization where the percentage of PBEs increased each year (Figure 2). Similar to those previous years, PBE rates were higher among private school students than public school students (4.53% vs. 1.90%) and nearly 3% more public school students completed the pertussis

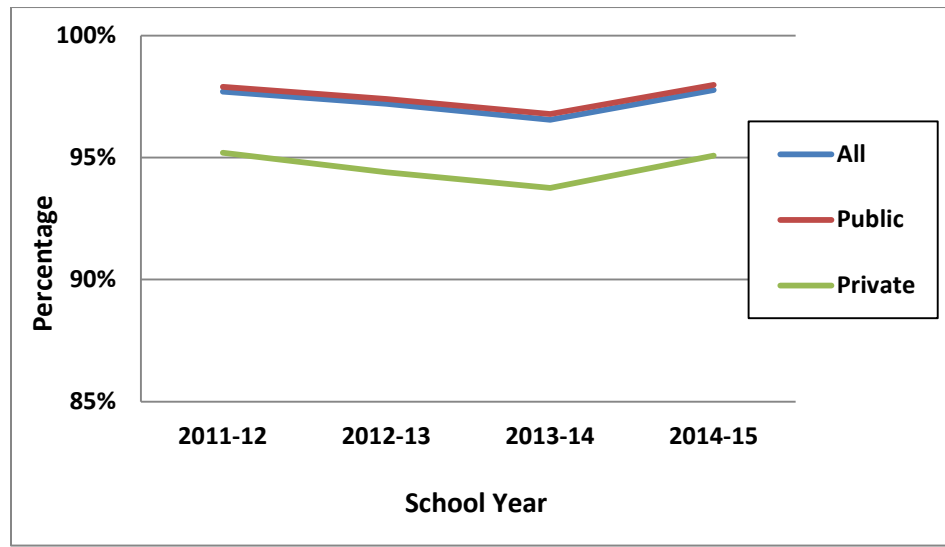
immunization (Tdap) requirement than did private schools students (98.0% vs. 95.1%, Table 1 and Figure 1).

**Table 1: 7th Grade Immunization Assessment: Comparison Between Fall 2013-14 to Fall 2014-2015**

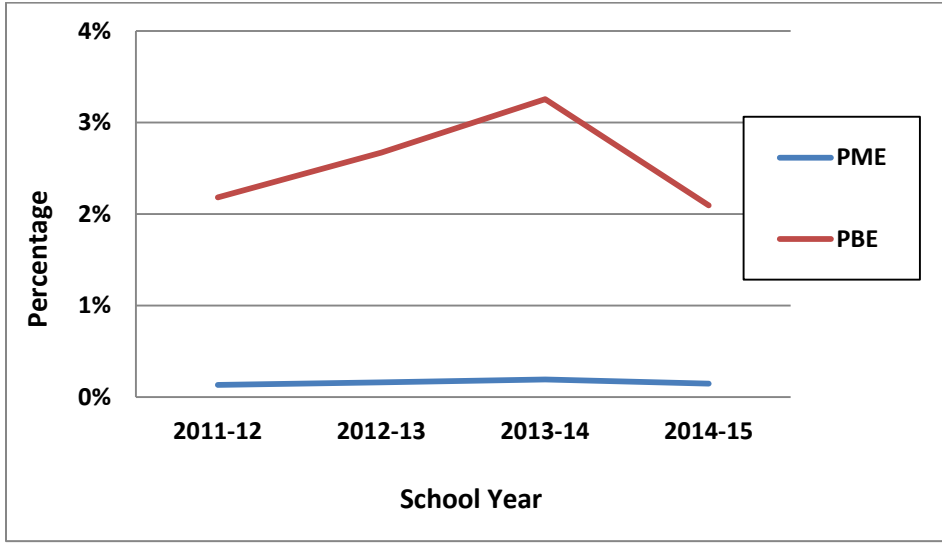
	All Schools		Public		Private	
	2013-14	2014-15	2013-14	2014-15	2013-14	2014-15
Number of Schools	4,609	4,575	2,820	2,831	1,789	1,744
Number of Students	491,908	489,643	455,172	453,832	36,736	35,811
Completed Tdap*	96.6%	97.8%	96.8%	98.0%	93.8%	95.1%
Permanent Medical Exemptions	0.19%	0.14%	0.16%	0.13%	0.53%	0.39%
Personal Belief Exemptions	3.26%	2.09%	3.06%	1.90%	5.71%	4.53%
Health Care Practitioner Counseled	-	1.27%	-	1.13%	-	3.05%
Religious	-	0.82%	-	0.77%	-	1.48%

\*Received pertussis-containing immunization (Tdap, DTaP, DTP) on or after 7th birthday

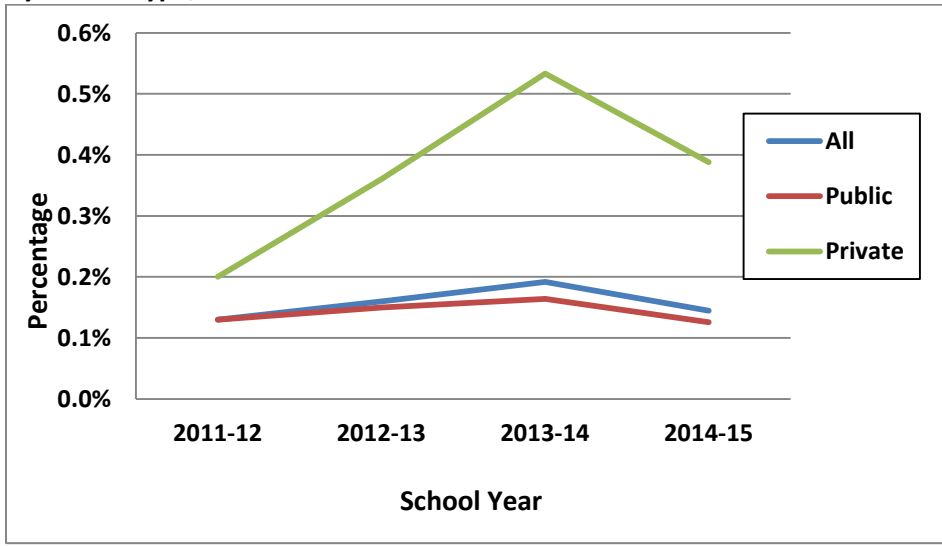
**Figure 1: Percentage of California 7<sup>th</sup> Graders Completing the Pertussis Booster 2011-12 to 2014-15 School Years**



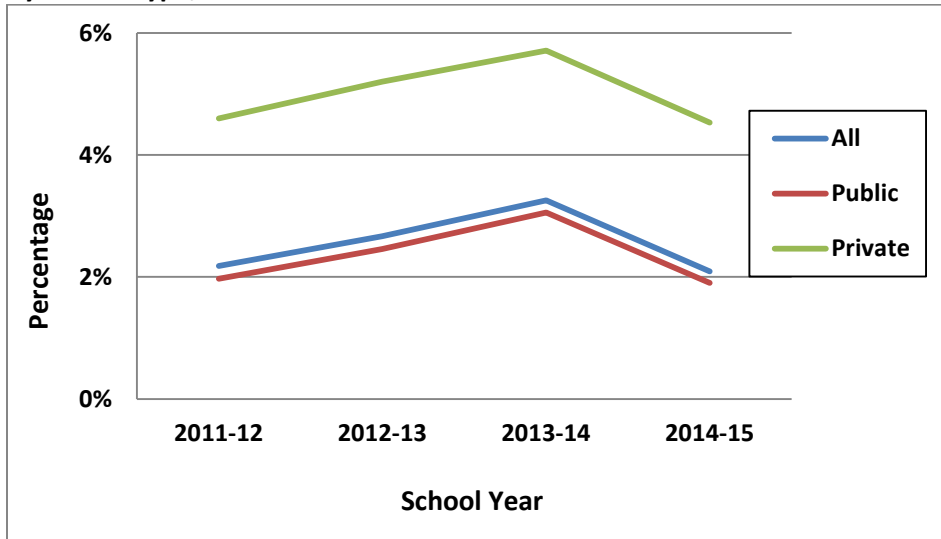
**Figure 2: Percentage of California 7<sup>th</sup> Graders with a PME or PBE, 2011-12 to 2014-15 School Years**



**Figure 3: Percentage of California 7<sup>th</sup> Graders with a PME By School Type, 2011-12 to 2014-15 School Years**

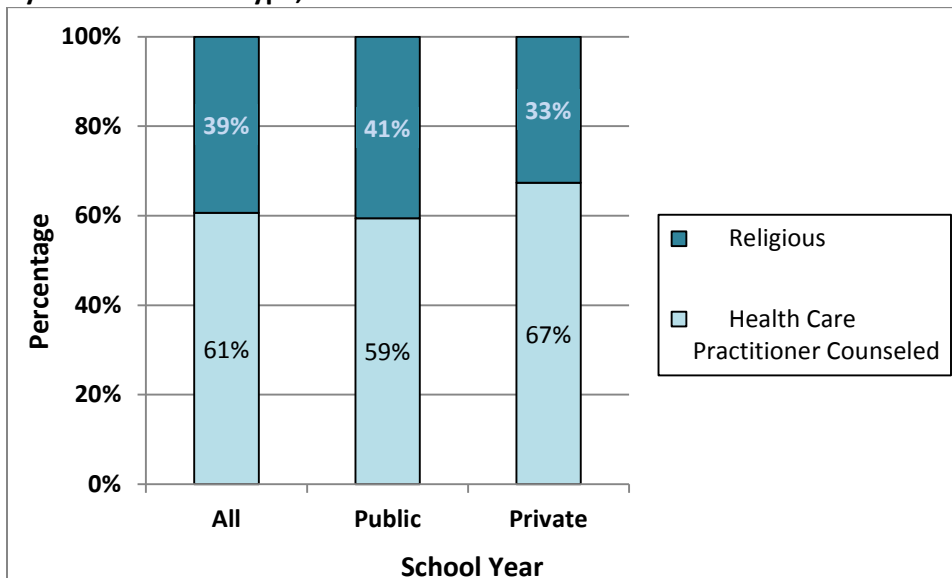


**Figure 4: Percentage of California 7<sup>th</sup> Graders with a PBE By School Type, 2011-12 to 2014-15 School Years**



As noted previously, students seeking a PBE in 2014-15 had the choice of either receiving counseling from a health care practitioner or claiming a religious exemption. As noted below in Figure 5, a higher percentage of 7th grade students took a Health Care Practitioner Counseled PBE than took a Religious Exemption (61% vs. 39%).

**Figure 5: Percentage of California 7<sup>th</sup> Graders with a PBE By PBE and School Type, 2014-15 School Year**



Description of Attached Tables

Enclosed is a full set of tables showing this year’s results. Table 2 shows the number of schools reporting by county and type (public or private). Table 3 shows total enrollment and admission

status by county. Table 4 shows personal beliefs exemption status by county comparing the 2013-14 school year to the 2014-15 school year. Table 5 shows total exemption status (personal beliefs exemption and permanent medical exemption) status by county comparing the 2013-14 school year to the 2014-15 school year.

*For further information, please contact Teresa Lee at (510) 620-3746 or [Teresa.Lee2@cdph.ca.gov](mailto:Teresa.Lee2@cdph.ca.gov) at the California Department of Public Health, Immunization Branch.*

7TH GRADE ASSESSMENT - CALIFORNIA, 2014-2015  
 TABLE 2: NUMBER AND PERCENTAGE OF SCHOOLS REPORTING  
 BY COUNTY AND TYPE

	SCHOOL TYPE								
	ALL			PUBLIC			PRIVATE		
	NUMBER OF SCHOOLS	NUMBER REPORTING	PERCENT REPORTING	NUMBER OF SCHOOLS	NUMBER REPORTING	PERCENT REPORTING	NUMBER OF SCHOOLS	NUMBER REPORTING	PERCENT REPORTING
STATE TOTAL	5,122	4,575	89.32%	3,065	2,831	92.37%	2,057	1,744	84.78%
COUNTY									
ALAMEDA	211	163	77.25%	108	91	84.26%	103	72	69.90%
ALPINE	3	0	0.00%	3	0	0.00%	0	0	0.00%
AMADOR	6	6	100.00%	6	6	100.00%	0	0	0.00%
BUTTE	53	52	98.11%	38	38	100.00%	15	14	93.33%
CALAVERAS	9	7	77.78%	5	5	100.00%	4	2	50.00%
COLUSA	10	7	70.00%	8	5	62.50%	2	2	100.00%
CONTRA COSTA	152	125	82.24%	71	62	87.32%	81	63	77.78%
DEL NORTE	10	8	80.00%	8	7	87.50%	2	1	50.00%
EL DORADO	31	29	93.55%	22	21	95.45%	9	8	88.89%
FRESNO	124	123	99.19%	99	99	100.00%	25	24	96.00%
GLENN	15	12	80.00%	13	10	76.92%	2	2	100.00%
HUMBOLDT	57	53	92.98%	47	43	91.49%	10	10	100.00%
IMPERIAL	31	29	93.55%	23	22	95.65%	8	7	87.50%
INYO	8	7	87.50%	7	7	100.00%	1	0	0.00%
KERN	116	108	93.10%	78	78	100.00%	38	30	78.95%
KINGS	27	27	100.00%	21	21	100.00%	6	6	100.00%
LAKE	24	20	83.33%	18	16	88.89%	6	4	66.67%
LASSEN	15	12	80.00%	14	12	85.71%	1	0	0.00%
LOS ANGELES	1,180	942	79.83%	604	498	82.45%	576	444	77.08%
MADERA	30	27	90.00%	26	24	92.31%	4	3	75.00%
MARIN	50	48	96.00%	22	22	100.00%	28	26	92.86%
MARIPOSA	10	9	90.00%	8	7	87.50%	2	2	100.00%
MENDOCINO	35	23	65.71%	28	17	60.71%	7	6	85.71%
MERCED	48	43	89.58%	33	32	96.97%	15	11	73.33%
MODOC	5	5	100.00%	4	4	100.00%	1	1	100.00%
MONO	7	4	57.14%	6	3	50.00%	1	1	100.00%
MONTEREY	60	57	95.00%	40	40	100.00%	20	17	85.00%
NAPA	29	29	100.00%	14	14	100.00%	15	15	100.00%
NEVADA	29	24	82.76%	24	20	83.33%	5	4	80.00%

7TH GRADE ASSESSMENT - CALIFORNIA, 2014-2015  
 TABLE 2: NUMBER AND PERCENTAGE OF SCHOOLS REPORTING  
 BY COUNTY AND TYPE

	SCHOOL TYPE								
	ALL			PUBLIC			PRIVATE		
	NUMBER OF SCHOOLS	NUMBER REPORTING	PERCENT REPORTING	NUMBER OF SCHOOLS	NUMBER REPORTING	PERCENT REPORTING	NUMBER OF SCHOOLS	NUMBER REPORTING	PERCENT REPORTING
STATE TOTAL	5,122	4,575	89.32%	3,065	2,831	92.37%	2,057	1,744	84.78%
COUNTY									
ORANGE	279	277	99.28%	126	126	100.00%	153	151	98.69%
PLACER	60	57	95.00%	45	45	100.00%	15	12	80.00%
PLUMAS	6	6	100.00%	5	5	100.00%	1	1	100.00%
RIVERSIDE	210	189	90.00%	124	116	93.55%	86	73	84.88%
SACRAMENTO	200	152	76.00%	118	98	83.05%	82	54	65.85%
SAN BENITO	21	20	95.24%	16	15	93.75%	5	5	100.00%
SAN BERNARDINO	229	229	100.00%	145	145	100.00%	84	84	100.00%
SAN DIEGO	377	377	100.00%	228	228	100.00%	149	149	100.00%
SAN FRANCISCO	101	88	87.13%	32	21	65.63%	69	67	97.10%
SAN JOAQUIN	159	157	98.74%	130	130	100.00%	29	27	93.10%
SAN LUIS OBISPO	35	35	100.00%	23	23	100.00%	12	12	100.00%
SAN MATEO	100	98	98.00%	51	50	98.04%	49	48	97.96%
SANTA BARBARA	59	58	98.31%	32	32	100.00%	27	26	96.30%
SANTA CLARA	202	201	99.50%	99	99	100.00%	103	102	99.03%
SANTA CRUZ	48	42	87.50%	27	25	92.59%	21	17	80.95%
SHASTA	73	61	83.56%	53	51	96.23%	20	10	50.00%
SIERRA	2	2	100.00%	2	2	100.00%	0	0	0.00%
SISKIYOU	26	26	100.00%	22	22	100.00%	4	4	100.00%
SOLANO	48	43	89.58%	29	28	96.55%	19	15	78.95%
SONOMA	96	81	84.38%	62	55	88.71%	34	26	76.47%
STANISLAUS	77	69	89.61%	54	52	96.30%	23	17	73.91%
SUTTER	31	30	96.77%	25	25	100.00%	6	5	83.33%
TEHAMA	26	26	100.00%	25	25	100.00%	1	1	100.00%
TRINITY	10	10	100.00%	10	10	100.00%	0	0	0.00%
TULARE	96	84	87.50%	80	77	96.25%	16	7	43.75%
TUOLUMNE	18	15	83.33%	14	13	92.86%	4	2	50.00%
VENTURA	104	103	99.04%	56	56	100.00%	48	47	97.92%
YOLO	27	23	85.19%	19	18	94.74%	8	5	62.50%
YUBA	17	17	100.00%	15	15	100.00%	2	2	100.00%

7TH GRADE ASSESSMENT - CALIFORNIA, 2014-2015  
 TABLE 3: TOTAL ENROLLMENT AND ADMISSION STATUS  
 BY COUNTY

	TOTAL STUDENTS	ENTRANTS WITH TDAP COMPLETED		ENTRANTS WITH PME		ENTRANTS WITH PBE	
	NUMBER	NUMBER	PERCENT	NUMBER	PERCENT	NUMBER	PERCENT
STATE TOTAL	489,643	478,689	97.76%	709	0.14%	10,245	2.09%
COUNTY							
ALAMEDA	16,308	15,999	98.11%	14	0.09%	295	1.81%
ALPINE	0	0	0.00%	0	0.00%	0	0.00%
AMADOR	330	316	95.76%	0	0.00%	14	4.24%
BUTTE	2,420	2,315	95.66%	10	0.41%	95	3.93%
CALAVERAS	433	407	94.00%	0	0.00%	26	6.00%
COLUSA	362	355	98.07%	0	0.00%	7	1.93%
CONTRA COSTA	14,546	14,341	98.59%	19	0.13%	186	1.28%
DEL NORTE	285	260	91.23%	0	0.00%	25	8.77%
EL DORADO	2,139	2,040	95.37%	7	0.33%	92	4.30%
FRESNO	15,422	15,241	98.83%	6	0.04%	175	1.13%
GLENN	260	255	98.08%	0	0.00%	5	1.92%
HUMBOLDT	1,286	1,168	90.82%	4	0.31%	114	8.86%
IMPERIAL	2,972	2,954	99.39%	1	0.03%	17	0.57%
INYO	182	179	98.35%	0	0.00%	3	1.65%
KERN	13,698	13,431	98.05%	14	0.10%	253	1.85%
KINGS	2,113	2,100	99.38%	0	0.00%	13	0.62%
LAKE	725	694	95.72%	0	0.00%	31	4.28%
LASSEN	219	188	85.84%	0	0.00%	31	14.16%
LOS ANGELES	116,372	114,200	98.13%	186	0.16%	1,986	1.71%
MADERA	2,389	2,346	98.20%	2	0.08%	41	1.72%
MARIN	3,059	2,972	97.16%	6	0.20%	81	2.65%
MARIPOSA	131	126	96.18%	0	0.00%	5	3.82%
MENDOCINO	956	873	91.32%	0	0.00%	83	8.68%
MERCED	5,027	4,966	98.79%	5	0.10%	56	1.11%
MODOC	113	107	94.69%	3	2.65%	3	2.65%
MONO	107	103	96.26%	0	0.00%	4	3.74%
MONTEREY	5,929	5,869	98.99%	3	0.05%	57	0.96%
NAPA	1,782	1,738	97.53%	5	0.28%	39	2.19%
NEVADA	849	726	85.51%	3	0.35%	120	14.13%



7TH GRADE ASSESSMENT - CALIFORNIA, 2014-2015  
 TABLE 3: TOTAL ENROLLMENT AND ADMISSION STATUS  
 BY COUNTY

	TOTAL STUDENTS	ENTRANTS WITH TDAP COMPLETED		ENTRANTS WITH PME		ENTRANTS WITH PBE	
	NUMBER	NUMBER	PERCENT	NUMBER	PERCENT	NUMBER	PERCENT
STATE TOTAL	489,643	478,689	97.76%	709	0.14%	10,245	2.09%
COUNTY							
ORANGE	40,786	39,839	97.68%	66	0.16%	881	2.16%
PLACER	5,513	5,201	94.34%	10	0.18%	302	5.48%
PLUMAS	160	149	93.13%	2	1.25%	9	5.63%
RIVERSIDE	32,838	32,202	98.06%	68	0.21%	568	1.73%
SACRAMENTO	18,135	17,490	96.44%	18	0.10%	627	3.46%
SAN BENITO	886	879	99.21%	0	0.00%	7	0.79%
SAN BERNARDINO	31,933	31,192	97.68%	34	0.11%	707	2.21%
SAN DIEGO	39,774	38,697	97.29%	68	0.17%	1,009	2.54%
SAN FRANCISCO	4,986	4,948	99.24%	3	0.06%	35	0.70%
SAN JOAQUIN	11,560	11,414	98.74%	18	0.16%	128	1.11%
SAN LUIS OBISPO	2,692	2,555	94.91%	2	0.07%	135	5.01%
SAN MATEO	8,369	8,273	98.85%	23	0.27%	73	0.87%
SANTA BARBARA	6,078	5,951	97.91%	10	0.16%	117	1.92%
SANTA CLARA	23,879	23,632	98.97%	28	0.12%	219	0.92%
SANTA CRUZ	3,252	3,086	94.90%	7	0.22%	159	4.89%
SHASTA	2,137	1,983	92.79%	1	0.05%	153	7.16%
SIERRA	34	34	100.00%	0	0.00%	0	0.00%
SISKIYOU	404	370	91.58%	2	0.50%	32	7.92%
SOLANO	5,143	5,055	98.29%	11	0.21%	77	1.50%
SONOMA	5,892	5,715	97.00%	3	0.05%	174	2.95%
STANISLAUS	8,691	8,470	97.46%	19	0.22%	202	2.32%
SUTTER	1,722	1,637	95.06%	1	0.06%	84	4.88%
TEHAMA	843	811	96.20%	4	0.47%	28	3.32%
TRINITY	108	96	88.89%	0	0.00%	12	11.11%
TULARE	7,832	7,729	98.68%	3	0.04%	100	1.28%
TUOLUMNE	411	372	90.51%	1	0.24%	38	9.25%
VENTURA	11,239	10,802	96.11%	18	0.16%	419	3.73%
YOLO	2,282	2,240	98.16%	0	0.00%	42	1.84%
YUBA	1,650	1,598	96.85%	1	0.06%	51	3.09%

7TH GRADE ASSESSMENT - CALIFORNIA, 2014-2015  
 TABLE 4: NUMBER AND PERCENTAGE OF CHILDREN ENROLLED  
 WITH PERSONAL BELIEFS EXEMPTION FROM VACCINATION BY COUNTY

	TOTAL STUDENTS	ENTRANTS WITH PBE							
		PBE TYPE				TOTAL PBE			
		HEALTH CARE PRACTITIONER COUNSELED		RELIGIOUS		2014-15		2013-14	Percentage point difference
		NUMBER	PERCENT	NUMBER	PERCENT	NUMBER	PERCENT	PERCENT	
STATE TOTAL	489,643	6,214	1.27%	4,031	0.82%	10,245	2.09%	3.26%	-1.16%
COUNTY									
ALAMEDA	16,308	156	0.96%	139	0.85%	295	1.81%	2.00%	-0.19%
ALPINE	0	0	0.00%	0	0.00%	0	0.00%	0.00%	NA
AMADOR	330	14	4.24%	0	0.00%	14	4.24%	7.96%	-3.72%
BUTTE	2,420	66	2.73%	29	1.20%	95	3.93%	7.94%	-4.01%
CALAVERAS	433	16	3.70%	10	2.31%	26	6.00%	9.45%	-3.45%
COLUSA	362	5	1.38%	2	0.55%	7	1.93%	1.10%	0.83%
CONTRA COSTA	14,546	100	0.69%	86	0.59%	186	1.28%	2.03%	-0.75%
DEL NORTE	285	21	7.37%	4	1.40%	25	8.77%	8.25%	0.52%
EL DORADO	2,139	61	2.85%	31	1.45%	92	4.30%	8.13%	-3.83%
FRESNO	15,422	124	0.80%	51	0.33%	175	1.13%	2.43%	-1.30%
GLENN	260	3	1.15%	2	0.77%	5	1.92%	2.42%	-0.50%
HUMBOLDT	1,286	64	4.98%	50	3.89%	114	8.86%	12.89%	-4.03%
IMPERIAL	2,972	10	0.34%	7	0.24%	17	0.57%	0.80%	-0.23%
INYO	182	0	0.00%	3	1.65%	3	1.65%	4.69%	-3.04%
KERN	13,698	170	1.24%	83	0.61%	253	1.85%	2.91%	-1.06%
KINGS	2,113	7	0.33%	6	0.28%	13	0.62%	1.21%	-0.59%
LAKE	725	20	2.76%	11	1.52%	31	4.28%	8.14%	-3.86%
LASSEN	219	13	5.94%	18	8.22%	31	14.16%	16.86%	-2.71%
LOS ANGELES	116,372	1,114	0.96%	872	0.75%	1,986	1.71%	2.41%	-0.70%
MADERA	2,389	39	1.63%	2	0.08%	41	1.72%	3.70%	-1.98%
MARIN	3,059	73	2.39%	8	0.26%	81	2.65%	4.28%	-1.63%
MARIPOSA	131	4	3.05%	1	0.76%	5	3.82%	20.13%	-16.32%
MENDOCINO	956	54	5.65%	29	3.03%	83	8.68%	15.79%	-7.11%
MERCED	5,027	21	0.42%	35	0.70%	56	1.11%	1.05%	0.07%
MODOC	113	0	0.00%	3	2.65%	3	2.65%	11.54%	-8.88%
MONO	107	3	2.80%	1	0.93%	4	3.74%	3.38%	0.36%
MONTEREY	5,929	31	0.52%	26	0.44%	57	0.96%	1.45%	-0.49%
NAPA	1,782	28	1.57%	11	0.62%	39	2.19%	3.36%	-1.17%
NEVADA	849	88	10.37%	32	3.77%	120	14.13%	21.11%	-6.98%

7TH GRADE ASSESSMENT - CALIFORNIA, 2014-2015  
 TABLE 4: NUMBER AND PERCENTAGE OF CHILDREN ENROLLED  
 WITH PERSONAL BELIEFS EXEMPTION FROM VACCINATION BY COUNTY

	TOTAL STUDENTS	ENTRANTS WITH PBE							
		PBE TYPE				TOTAL PBE			
		HEALTH CARE PRACTITIONER COUNSELED		RELIGIOUS		2014-15		2013-14	Percentage point difference
		NUMBER	PERCENT	NUMBER	PERCENT	NUMBER	PERCENT	PERCENT	
STATE TOTAL	489,643	6,214	1.27%	4,031	0.82%	10,245	2.09%	3.26%	-1.16%
COUNTY									
ORANGE	40,786	521	1.28%	360	0.88%	881	2.16%	3.18%	-1.02%
PLACER	5,513	203	3.68%	99	1.80%	302	5.48%	7.08%	-1.61%
PLUMAS	160	5	3.13%	4	2.50%	9	5.63%	14.02%	-8.39%
RIVERSIDE	32,838	371	1.13%	197	0.60%	568	1.73%	3.41%	-1.68%
SACRAMENTO	18,135	370	2.04%	257	1.42%	627	3.46%	4.92%	-1.46%
SAN BENITO	886	7	0.79%	0	0.00%	7	0.79%	2.34%	-1.55%
SAN BERNARDINO	31,933	305	0.96%	402	1.26%	707	2.21%	3.87%	-1.66%
SAN DIEGO	39,774	602	1.51%	407	1.02%	1,009	2.54%	3.48%	-0.95%
SAN FRANCISCO	4,986	27	0.54%	8	0.16%	35	0.70%	0.91%	-0.21%
SAN JOAQUIN	11,560	64	0.55%	64	0.55%	128	1.11%	1.91%	-0.81%
SAN LUIS OBISPO	2,692	119	4.42%	16	0.59%	135	5.01%	9.21%	-4.20%
SAN MATEO	8,369	45	0.54%	28	0.33%	73	0.87%	1.67%	-0.80%
SANTA BARBARA	6,078	83	1.37%	34	0.56%	117	1.92%	3.03%	-1.11%
SANTA CLARA	23,879	131	0.55%	88	0.37%	219	0.92%	1.23%	-0.31%
SANTA CRUZ	3,252	117	3.60%	42	1.29%	159	4.89%	7.79%	-2.90%
SHASTA	2,137	67	3.14%	86	4.02%	153	7.16%	10.00%	-2.84%
SIERRA	34	0	0.00%	0	0.00%	0	0.00%	0.00%	0.00%
SISKIYOU	404	13	3.22%	19	4.70%	32	7.92%	13.63%	-5.71%
SOLANO	5,143	53	1.03%	24	0.47%	77	1.50%	1.66%	-0.17%
SONOMA	5,892	133	2.26%	41	0.70%	174	2.95%	5.68%	-2.73%
STANISLAUS	8,691	137	1.58%	65	0.75%	202	2.32%	8.76%	-6.43%
SUTTER	1,722	48	2.79%	36	2.09%	84	4.88%	7.88%	-3.01%
TEHAMA	843	25	2.97%	3	0.36%	28	3.32%	8.79%	-5.46%
TRINITY	108	4	3.70%	8	7.41%	12	11.11%	16.67%	-5.56%
TULARE	7,832	88	1.12%	12	0.15%	100	1.28%	1.93%	-0.65%
TUOLUMNE	411	10	2.43%	28	6.81%	38	9.25%	16.07%	-6.83%
VENTURA	11,239	288	2.56%	131	1.17%	419	3.73%	3.85%	-0.12%
YOLO	2,282	30	1.31%	12	0.53%	42	1.84%	3.79%	-1.95%
YUBA	1,650	43	2.61%	8	0.48%	51	3.09%	3.60%	-0.51%

7TH GRADE ASSESSMENT - CALIFORNIA, 2014-2015

TABLE 5: PERMANENT MEDICAL EXEMPTION (PME) AND PERSONAL BELIEFS EXEMPTION (PBE) STATUS  
BY COUNTY

	TOTAL	EXEMPTION TYPE				TOTAL EXEMPTIONS			
	STUDENTS	ENTRANTS WITH PME		ENTRANTS WITH PBE		2014-15		2013-14	Percentage point difference
	NUMBER	NUMBER	PERCENT	NUMBER	PERCENT	NUMBER	PERCENT	PERCENT	
STATE TOTAL	489,643	709	0.14%	10,245	2.09%	10,954	2.24%	3.45%	-1.21%
COUNTY									
ALAMEDA	16,308	14	0.09%	295	1.81%	309	1.89%	2.20%	-0.30%
ALPINE	0	0	0.00%	0	0.00%	0	0.00%	0.00%	NA
AMADOR	330	0	0.00%	14	4.24%	14	4.24%	8.30%	-4.06%
BUTTE	2,420	10	0.41%	95	3.93%	105	4.34%	8.37%	-4.03%
CALAVERAS	433	0	0.00%	26	6.00%	26	6.00%	9.67%	-3.67%
COLUSA	362	0	0.00%	7	1.93%	7	1.93%	1.10%	0.83%
CONTRA COSTA	14,546	19	0.13%	186	1.28%	205	1.41%	2.17%	-0.76%
DEL NORTE	285	0	0.00%	25	8.77%	25	8.77%	11.34%	-2.57%
EL DORADO	2,139	7	0.33%	92	4.30%	99	4.63%	8.22%	-3.60%
FRESNO	15,422	6	0.04%	175	1.13%	181	1.17%	2.68%	-1.51%
GLENN	260	0	0.00%	5	1.92%	5	1.92%	2.42%	-0.50%
HUMBOLDT	1,286	4	0.31%	114	8.86%	118	9.18%	13.19%	-4.01%
IMPERIAL	2,972	1	0.03%	17	0.57%	18	0.61%	0.90%	-0.30%
INYO	182	0	0.00%	3	1.65%	3	1.65%	4.69%	-3.04%
KERN	13,698	14	0.10%	253	1.85%	267	1.95%	3.51%	-1.56%
KINGS	2,113	0	0.00%	13	0.62%	13	0.62%	1.30%	-0.68%
LAKE	725	0	0.00%	31	4.28%	31	4.28%	8.14%	-3.86%
LASSEN	219	0	0.00%	31	14.16%	31	14.16%	16.86%	-2.71%
LOS ANGELES	116,372	186	0.16%	1,986	1.71%	2,172	1.87%	2.60%	-0.74%
MADERA	2,389	2	0.08%	41	1.72%	43	1.80%	3.95%	-2.15%
MARIN	3,059	6	0.20%	81	2.65%	87	2.84%	4.38%	-1.53%
MARIPOSA	131	0	0.00%	5	3.82%	5	3.82%	20.81%	-16.99%
MENDOCINO	956	0	0.00%	83	8.68%	83	8.68%	16.19%	-7.51%
MERCED	5,027	5	0.10%	56	1.11%	61	1.21%	1.23%	-0.02%
MODOC	113	3	2.65%	3	2.65%	6	5.31%	14.10%	-8.79%
MONO	107	0	0.00%	4	3.74%	4	3.74%	3.38%	0.36%
MONTEREY	5,929	3	0.05%	57	0.96%	60	1.01%	1.60%	-0.59%
NAPA	1,782	5	0.28%	39	2.19%	44	2.47%	3.47%	-1.00%
NEVADA	849	3	0.35%	120	14.13%	123	14.49%	21.11%	-6.62%

7TH GRADE ASSESSMENT - CALIFORNIA, 2014-2015

TABLE 5: PERMANENT MEDICAL EXEMPTION (PME) AND PERSONAL BELIEFS EXEMPTION (PBE) STATUS  
BY COUNTY

	TOTAL	EXEMPTION TYPE				TOTAL EXEMPTIONS			
	STUDENTS	ENTRANTS WITH PME		ENTRANTS WITH PBE		2014-15		2013-14	Percentage point difference
	NUMBER	NUMBER	PERCENT	NUMBER	PERCENT	NUMBER	PERCENT	PERCENT	
STATE TOTAL	489,643	709	0.14%	10,245	2.09%	10,954	2.24%	3.45%	-1.21%
COUNTY									
ORANGE	40,786	66	0.16%	881	2.16%	947	2.32%	3.34%	-1.02%
PLACER	5,513	10	0.18%	302	5.48%	312	5.66%	7.21%	-1.55%
PLUMAS	160	2	1.25%	9	5.63%	11	6.88%	14.02%	-7.14%
RIVERSIDE	32,838	68	0.21%	568	1.73%	636	1.94%	3.51%	-1.57%
SACRAMENTO	18,135	18	0.10%	627	3.46%	645	3.56%	5.10%	-1.54%
SAN BENITO	886	0	0.00%	7	0.79%	7	0.79%	2.66%	-1.87%
SAN BERNARDINO	31,933	34	0.11%	707	2.21%	741	2.32%	3.97%	-1.65%
SAN DIEGO	39,774	68	0.17%	1,009	2.54%	1,077	2.71%	3.61%	-0.90%
SAN FRANCISCO	4,986	3	0.06%	35	0.70%	38	0.76%	2.79%	-2.03%
SAN JOAQUIN	11,560	18	0.16%	128	1.11%	146	1.26%	1.98%	-0.72%
SAN LUIS OBISPO	2,692	2	0.07%	135	5.01%	137	5.09%	9.33%	-4.24%
SAN MATEO	8,369	23	0.27%	73	0.87%	96	1.15%	1.88%	-0.73%
SANTA BARBARA	6,078	10	0.16%	117	1.92%	127	2.09%	3.18%	-1.09%
SANTA CLARA	23,879	28	0.12%	219	0.92%	247	1.03%	1.34%	-0.31%
SANTA CRUZ	3,252	7	0.22%	159	4.89%	166	5.10%	7.91%	-2.81%
SHASTA	2,137	1	0.05%	153	7.16%	154	7.21%	10.13%	-2.93%
SIERRA	34	0	0.00%	0	0.00%	0	0.00%	0.00%	0.00%
SISKIYOU	404	2	0.50%	32	7.92%	34	8.42%	13.86%	-5.44%
SOLANO	5,143	11	0.21%	77	1.50%	88	1.71%	1.75%	-0.03%
SONOMA	5,892	3	0.05%	174	2.95%	177	3.00%	5.79%	-2.78%
STANISLAUS	8,691	19	0.22%	202	2.32%	221	2.54%	8.88%	-6.33%
SUTTER	1,722	1	0.06%	84	4.88%	85	4.94%	8.00%	-3.07%
TEHAMA	843	4	0.47%	28	3.32%	32	3.80%	8.79%	-4.99%
TRINITY	108	0	0.00%	12	11.11%	12	11.11%	17.59%	-6.48%
TULARE	7,832	3	0.04%	100	1.28%	103	1.32%	2.04%	-0.73%
TUOLUMNE	411	1	0.24%	38	9.25%	39	9.49%	16.07%	-6.58%
VENTURA	11,239	18	0.16%	419	3.73%	437	3.89%	3.98%	-0.09%
YOLO	2,282	0	0.00%	42	1.84%	42	1.84%	3.88%	-2.04%
YUBA	1,650	1	0.06%	51	3.09%	52	3.15%	3.60%	-0.45%