

2015- 2016 7TH GRADE IMMUNIZATION ASSESSMENT RESULTS

CALIFORNIA DEPARTMENT OF PUBLIC HEALTH, IMMUNIZATION BRANCH

Introduction

Each autumn all schools with 7th grades in California are required to report student compliance with California School Immunization Laws (California Health and Safety Code Sections 120335-120375). This report summarizes data for the 2015-2016 school year reported by public and private 7th grades statewide (Table 1, Figure 1) and by county (Tables 2-5).

Methods

Schools reported data to the California Department of Public Health (CDPH) in the autumn of 2015, prior to the 2016 effective date for [Senate Bill \(SB\) 277](#) but during the second year of implementation of [Assembly Bill \(AB\) 2109](#).

Based on their immunization status, students were classified by school staff into the following categories:

- Having received a booster immunization against pertussis (Tdap)
 - Having a permanent medical exemption (PME) to vaccination
 - Having a personal beliefs exemption (PBE). In 2014 and 2015, under the provisions of AB2109 this required additional documentation from the parent or guardian of either:
 - Receiving information about immunizations and the diseases they prevent from an authorized health care practitioner or
 - Declaring a religious objection to seeking medical advice or treatment from authorized health care practitioners
 - Overdue and subject to exclusion from school for non-compliance (new category for this year).
-

Results and Discussion

5,262 of 5,694 (92%) schools with 7th graders in California submitted immunization assessment reports by December 15, 2015 when reporting closed for the 2015-16 school year. Private schools accounted for 39% of all schools with 7th graders (2245/5694) but 67% of those that did not report (291/432).

Vaccinated (pertussis booster): Of 496,805 7th graders whose schools reported their status, 485,911 (97.8%) were reported as having received a pertussis booster immunization (Tdap), similar to the 97.8% with pertussis booster immunization reported in 2014-15 (Table 1). Rates in public schools were higher (98.1%) than private schools (94.8%).

PBEs: Among 7th graders, 1.66% were reported as having PBEs in 2015-2016, which is 0.43 percentage points lower than the 2.09% in 2014-2015 and 1.6 percentage points lower than the 3.26% in 2013-2014 (Table 1). PBE rates are now at their lowest level since the pertussis booster requirement was implemented in the 2010-11 school year (Figure 2). PBEs rates were 1.52% (-0.38 percentage points from 2014-15) in public schools and 3.38% (-1.15 percentage points from 2014-15) in private schools. Across counties, the proportion of 7th graders with PBEs ranges from 0% to over 12% (Table 3).

PMEs: The percentage of students with PME was 0.14%, unchanged from 2014-15 (Table 1).

Overdue: 1,963 students entering 7th grade (0.40%) in the state were reported as 'Overdue' (Table 3) and so were subject to exclusion from school.

Limitations

This report is subject to limitations that include an absence of reports from 432 schools.

For media inquiries, please contact the CDPH Office of Public Affairs via email at cdphpress@cdph.ca.gov or phone 916-440-7259

Table 1. Immunization Status and 1-Year Percentage Point Change in California 7th Graders, 2015-16 School Year

	2015-16			2014-15			1 Year Percentage Point Change		
	All	Public	Private	All	Public	Private	All	Public	Private
Number of Schools	5,262	3,308	1,954	4,575	2,831	1,744			
Number of Students	496,805	460,148	36,657	489,643	453,832	35,811			
Completed Tdap*	97.8%	98.1%	94.8%	97.8%	98.0%	95.1%	0.0%	0.0%	-0.3%
Permanent Medical Exemptions	0.14%	0.13%	0.32%	0.14%	0.13%	0.39%	0.00%	0.00%	-0.07%
Overdue^	0.40%	0.30%	1.54%	-	-	-			
Personal Belief Exemptions	1.66%	1.52%	3.38%	2.09%	1.90%	4.53%	-0.43%	-0.38%	-1.15%
Health Care Practitioner Counseled	1.03%	0.92%	2.42%	-	-	-			
Religious	0.63%	0.60%	0.96%	-	-	-			

*Received pertussis-containing immunization (Tdap, DTaP, DTP) on or after 7th birthday.

^'Overdue' are students subject to exclusion.

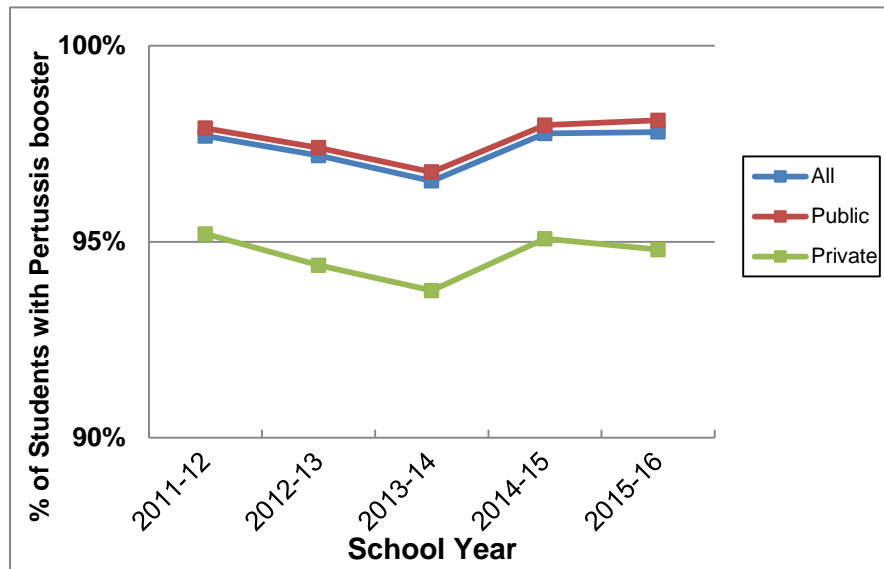


Figure 1. Percentage of 7th graders with Pertussis booster vaccination, 2011-12 to 2015-16

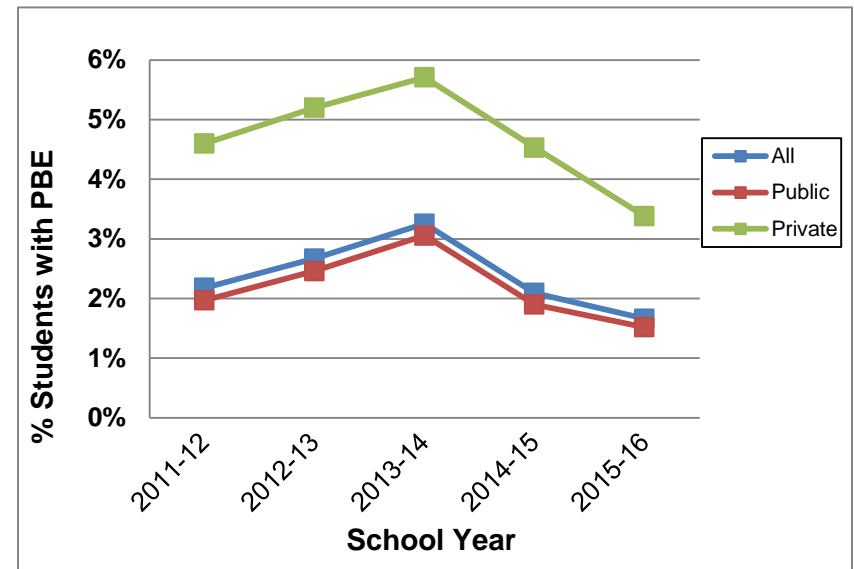


Figure 2. Percentage of 7th graders with a PBE, 2011-12 to 2015-16

7TH GRADE ASSESSMENT - CALIFORNIA, 2015-2016

TABLE 2: NUMBER AND PERCENTAGE OF SCHOOLS REPORTING BY SCHOOL TYPE
BY COUNTY

	ALL			PUBLIC			PRIVATE		
	NUMBER OF SCHOOLS	NUMBER REPORTING	PERCENT REPORTING	NUMBER OF SCHOOLS	NUMBER REPORTING	PERCENT REPORTING	NUMBER OF SCHOOLS	NUMBER REPORTING	PERCENT REPORTING
STATE TOTAL	5,694	5,262	92.4%	3,449	3,308	95.9%	2,245	1,954	87.0%
COUNTY									
ALAMEDA	208	174	83.7%	113	98	86.7%	95	76	80.0%
ALPINE	3	1	33.3%	3	1	33.3%	0	0	0.0%
AMADOR	7	5	71.4%	6	5	83.3%	1	0	0.0%
BUTTE	67	66	98.5%	50	50	100.0%	17	16	94.1%
CALAVERAS	12	10	83.3%	10	10	100.0%	2	0	0.0%
COLUSA	9	9	100.0%	7	7	100.0%	2	2	100.0%
CONTRA COSTA	153	145	94.8%	76	73	96.1%	77	72	93.5%
DEL NORTE	12	11	91.7%	9	9	100.0%	3	2	66.7%
EL DORADO	36	36	100.0%	25	25	100.0%	11	11	100.0%
FRESNO	153	152	99.3%	122	122	100.0%	31	30	96.8%
GLENN	16	16	100.0%	14	14	100.0%	2	2	100.0%
HUMBOLDT	62	62	100.0%	51	51	100.0%	11	11	100.0%
IMPERIAL	33	28	84.8%	26	22	84.6%	7	6	85.7%
INYO	11	10	90.9%	10	9	90.0%	1	1	100.0%
KERN	131	120	91.6%	89	86	96.6%	42	34	81.0%
KINGS	35	35	100.0%	29	29	100.0%	6	6	100.0%
LAKE	28	27	96.4%	22	22	100.0%	6	5	83.3%
LASSEN	21	18	85.7%	20	18	90.0%	1	0	0.0%
LOS ANGELES	1,219	1,008	82.7%	646	571	88.4%	573	437	76.3%
MADERA	47	40	85.1%	39	35	89.7%	8	5	62.5%
MARIN	56	55	98.2%	25	25	100.0%	31	30	96.8%
MARIPOSA	13	12	92.3%	11	11	100.0%	2	1	50.0%
MENDOCINO	41	35	85.4%	32	28	87.5%	9	7	77.8%
MERCED	55	43	78.2%	36	36	100.0%	19	7	36.8%
MODOC	10	10	100.0%	9	9	100.0%	1	1	100.0%
MONO	7	6	85.7%	5	5	100.0%	2	1	50.0%
MONTEREY	63	62	98.4%	44	44	100.0%	19	18	94.7%
NAPA	30	27	90.0%	14	14	100.0%	16	13	81.3%

7TH GRADE ASSESSMENT - CALIFORNIA, 2015-2016

TABLE 2: NUMBER AND PERCENTAGE OF SCHOOLS REPORTING BY SCHOOL TYPE
BY COUNTY

	ALL			PUBLIC			PRIVATE		
	NUMBER OF SCHOOLS	NUMBER REPORTING	PERCENT REPORTING	NUMBER OF SCHOOLS	NUMBER REPORTING	PERCENT REPORTING	NUMBER OF SCHOOLS	NUMBER REPORTING	PERCENT REPORTING
STATE TOTAL	5,694	5,262	92.4%	3,449	3,308	95.9%	2,245	1,954	87.0%
COUNTY									
NEVADA	34	27	79.4%	24	21	87.5%	10	6	60.0%
ORANGE	314	314	100.0%	136	136	100.0%	178	178	100.0%
PLACER	68	67	98.5%	51	51	100.0%	17	16	94.1%
PLUMAS	10	9	90.0%	8	8	100.0%	2	1	50.0%
RIVERSIDE	227	221	97.4%	134	134	100.0%	93	87	93.5%
SACRAMENTO	211	177	83.9%	130	123	94.6%	81	54	66.7%
SAN BENITO	23	21	91.3%	18	16	88.9%	5	5	100.0%
SAN BERNARDINO	277	275	99.3%	169	169	100.0%	108	106	98.1%
SANDIEGO	436	436	100.0%	251	251	100.0%	185	185	100.0%
SAN FRANCISCO	106	102	96.2%	31	31	100.0%	75	71	94.7%
SAN JOAQUIN	170	170	100.0%	137	137	100.0%	33	33	100.0%
SAN LUIS OBISPO	43	40	93.0%	27	27	100.0%	16	13	81.3%
SAN MATEO	113	113	100.0%	57	57	100.0%	56	56	100.0%
SANTA BARBARA	67	65	97.0%	34	34	100.0%	33	31	93.9%
SANTA CLARA	236	235	99.6%	113	113	100.0%	123	122	99.2%
SANTA CRUZ	54	45	83.3%	30	27	90.0%	24	18	75.0%
SHASTA	80	74	92.5%	60	60	100.0%	20	14	70.0%
SIERRA	4	4	100.0%	4	4	100.0%	0	0	0.0%
SISKIYOU	37	37	100.0%	32	32	100.0%	5	5	100.0%
SOLANO	58	45	77.6%	39	32	82.1%	19	13	68.4%
SONOMA	109	108	99.1%	67	67	100.0%	42	41	97.6%
STANISLAUS	85	79	92.9%	61	60	98.4%	24	19	79.2%
SUTTER	32	31	96.9%	27	27	100.0%	5	4	80.0%
TEHAMA	36	32	88.9%	31	31	100.0%	5	1	20.0%
TRINITY	17	17	100.0%	17	17	100.0%	0	0	0.0%
TULARE	110	101	91.8%	92	90	97.8%	18	11	61.1%
TUOLUMNE	24	23	95.8%	20	19	95.0%	4	4	100.0%
VENTURA	123	120	97.6%	64	64	100.0%	59	56	94.9%
YOLO	34	34	100.0%	26	26	100.0%	8	8	100.0%
YUBA	18	17	94.4%	16	15	93.8%	2	2	100.0%

7TH GRADE ASSESSMENT - CALIFORNIA, 2015-2016
 TABLE 3: TOTAL ENROLLMENT AND ADMISSION STATUS
 BY COUNTY

	TOTAL STUDENTS	ENTRANTS WITH PERTUSSIS BOOSTER (Tdap) COMPLETED		ENTRANTS WITH PME		ENTRANTS WITH PBE		OVERDUE	
	NUMBER	NUMBER	PERCENT	NUMBER	PERCENT	NUMBER	PERCENT	NUMBER	PERCENT
STATE TOTAL	496,805	485,911	97.8%	700	0.14%	8,231	1.66%	1,963	0.40%
COUNTY									
ALAMEDA	18,501	18,201	98.4%	19	0.10%	158	0.85%	123	0.66%
ALPINE	8	7	87.5%	0	0.00%	1	12.50%	0	0.00%
AMADOR	332	312	94.0%	3	0.90%	17	5.12%	0	0.00%
BUTTE	2,542	2,452	96.5%	6	0.24%	79	3.11%	5	0.20%
CALAVERAS	409	377	92.2%	1	0.24%	30	7.33%	1	0.24%
COLUSA	340	338	99.4%	1	0.29%	1	0.29%	0	0.00%
CONTRA COSTA	14,498	14,305	98.7%	22	0.15%	135	0.93%	36	0.25%
DEL NORTE	302	278	92.1%	0	0.00%	24	7.95%	0	0.00%
EL DORADO	2,195	2,081	94.8%	3	0.14%	102	4.65%	9	0.41%
FRESNO	15,766	15,578	98.8%	7	0.04%	159	1.01%	22	0.14%
GLENN	423	419	99.1%	0	0.00%	4	0.95%	0	0.00%
HUMBOLDT	1,413	1,273	90.1%	6	0.42%	125	8.85%	9	0.64%
IMPERIAL	2,302	2,285	99.3%	1	0.04%	6	0.26%	10	0.43%
INYO	214	211	98.6%	0	0.00%	3	1.40%	0	0.00%
KERN	13,580	13,354	98.3%	9	0.07%	172	1.27%	45	0.33%
KINGS	2,157	2,148	99.6%	1	0.05%	8	0.37%	0	0.00%
LAKE	692	664	96.0%	2	0.29%	26	3.76%	0	0.00%
LASSEN	289	259	89.6%	1	0.35%	20	6.92%	9	3.11%
LOS ANGELES	118,060	115,865	98.1%	154	0.13%	1,636	1.39%	405	0.34%
MADERA	2,319	2,282	98.4%	1	0.04%	26	1.12%	10	0.43%
MARIN	3,320	3,239	97.6%	3	0.09%	70	2.11%	8	0.24%
MARIPOSA	140	129	92.1%	0	0.00%	8	5.71%	3	2.14%
MENDOCINO	1,013	949	93.7%	1	0.10%	49	4.84%	14	1.38%
MERCED	4,458	4,402	98.7%	8	0.18%	33	0.74%	15	0.34%
MODOC	122	117	95.9%	0	0.00%	5	4.10%	0	0.00%
MONO	122	121	99.2%	1	0.82%	0	0.00%	0	0.00%
MONTEREY	6,020	5,955	98.9%	5	0.08%	52	0.86%	8	0.13%
NAPA	1,803	1,766	97.9%	3	0.17%	23	1.28%	11	0.61%
NEVADA	817	717	87.8%	1	0.12%	97	11.87%	2	0.24%

7TH GRADE ASSESSMENT - CALIFORNIA, 2015-2016
 TABLE 3: TOTAL ENROLLMENT AND ADMISSION STATUS
 BY COUNTY

	TOTAL STUDENTS	ENTRANTS WITH PERTUSSIS BOOSTER (Tdap) COMPLETED		ENTRANTS WITH PME		ENTRANTS WITH PBE		OVERDUE	
	NUMBER	NUMBER	PERCENT	NUMBER	PERCENT	NUMBER	PERCENT	NUMBER	PERCENT
STATE TOTAL	496,805	485,911	97.8%	700	0.14%	8,231	1.66%	1,963	0.40%
COUNTY									
ORANGE	41,545	40,684	97.9%	58	0.14%	729	1.75%	74	0.18%
PLACER	5,666	5,446	96.1%	12	0.21%	204	3.60%	4	0.07%
PLUMAS	182	163	89.6%	0	0.00%	19	10.44%	0	0.00%
RIVERSIDE	34,498	33,897	98.3%	63	0.18%	486	1.41%	52	0.15%
SACRAMENTO	17,376	16,766	96.5%	29	0.17%	527	3.03%	54	0.31%
SAN BENITO	872	851	97.6%	6	0.69%	8	0.92%	7	0.80%
SAN BERNARDINO	31,891	31,167	97.7%	54	0.17%	468	1.47%	202	0.63%
SANDIEGO	39,891	38,881	97.5%	42	0.11%	790	1.98%	178	0.45%
SAN FRANCISCO	5,945	5,590	94.0%	4	0.07%	50	0.84%	301	5.06%
SAN JOAQUIN	11,288	11,067	98.0%	10	0.09%	148	1.31%	63	0.56%
SAN LUIS OBISPO	3,100	3,002	96.8%	8	0.26%	74	2.39%	16	0.52%
SAN MATEO	8,646	8,552	98.9%	8	0.09%	57	0.66%	29	0.34%
SANTA BARBARA	5,456	5,351	98.1%	6	0.11%	94	1.72%	5	0.09%
SANTA CLARA	25,293	24,943	98.6%	40	0.16%	219	0.87%	91	0.36%
SANTA CRUZ	3,410	3,219	94.4%	29	0.85%	147	4.31%	15	0.44%
SHASTA	2,147	2,014	93.8%	2	0.09%	130	6.05%	1	0.05%
SIERRA	39	38	97.4%	0	0.00%	1	2.56%	0	0.00%
SISKIYOU	460	426	92.6%	1	0.22%	32	6.96%	1	0.22%
SOLANO	4,582	4,527	98.8%	4	0.09%	47	1.03%	4	0.09%
SONOMA	5,735	5,532	96.5%	11	0.19%	169	2.95%	23	0.40%
STANISLAUS	8,531	8,327	97.6%	11	0.13%	182	2.13%	11	0.13%
SUTTER	1,698	1,581	93.1%	3	0.18%	114	6.71%	0	0.00%
TEHAMA	836	814	97.4%	0	0.00%	22	2.63%	0	0.00%
TRINITY	129	120	93.0%	0	0.00%	9	6.98%	0	0.00%
TULARE	7,915	7,810	98.7%	13	0.16%	82	1.04%	10	0.13%
TUOLUMNE	472	408	86.4%	2	0.42%	45	9.53%	17	3.60%
VENTURA	11,508	11,188	97.2%	24	0.21%	246	2.14%	50	0.43%
YOLO	2,469	2,418	97.9%	1	0.04%	45	1.82%	5	0.20%
YUBA	1,068	1,045	97.8%	0	0.00%	18	1.69%	5	0.47%

7TH GRADE ASSESSMENT - CALIFORNIA, 2015-2016

TABLE 4: NUMBER AND PERCENTAGE OF STUDENTS WITH PERTUSSIS BOOSTER VACCINATION
AND PERCENTAGE POINT CHANGE COMPARED TO LAST YEAR, BY COUNTY

	2015-16			2014-15			1 YEAR % POINT CHANGE
	TOTAL STUDENTS	NUMBER W/ PERTUSSIS VACC	PERCENT	TOTAL STUDENTS	NUMBER W/ PERTUSSIS VACC	PERCENT	PERCENT
STATE TOTAL	496,805	485,911	97.8%	489,643	478,689	97.8%	0.0%
COUNTY							
ALAMEDA	18,501	18,201	98.4%	16,308	15,999	98.1%	+0.3%
ALPINE	8	7	87.5%	0	0	0.0%	+87.5%
AMADOR	332	312	94.0%	330	316	95.8%	-1.8%
BUTTE	2,542	2,452	96.5%	2,420	2,315	95.7%	+0.8%
CALAVERAS	409	377	92.2%	433	407	94.0%	-1.8%
COLUSA	340	338	99.4%	362	355	98.1%	+1.3%
CONTRA COSTA	14,498	14,305	98.7%	14,546	14,341	98.6%	+0.1%
DEL NORTE	302	278	92.1%	285	260	91.2%	+0.9%
EL DORADO	2,195	2,081	94.8%	2,139	2,040	95.4%	-0.6%
FRESNO	15,766	15,578	98.8%	15,422	15,241	98.8%	0.0%
GLENN	423	419	99.1%	260	255	98.1%	+1.0%
HUMBOLDT	1,413	1,273	90.1%	1,286	1,168	90.8%	-0.7%
IMPERIAL	2,302	2,285	99.3%	2,972	2,954	99.4%	-0.1%
INYO	214	211	98.6%	182	179	98.4%	+0.2%
KERN	13,580	13,354	98.3%	13,698	13,431	98.1%	+0.2%
KINGS	2,157	2,148	99.6%	2,113	2,100	99.4%	+0.2%
LAKE	692	664	96.0%	725	694	95.7%	+0.3%
LASSEN	289	259	89.6%	219	188	85.8%	+3.8%
LOS ANGELES	118,060	115,865	98.1%	116,372	114,200	98.1%	0.0%
MADERA	2,319	2,282	98.4%	2,389	2,346	98.2%	+0.2%
MARIN	3,320	3,239	97.6%	3,059	2,972	97.2%	+0.4%
MARIPOSA	140	129	92.1%	131	126	96.2%	-4.1%
MENDOCINO	1,013	949	93.7%	956	873	91.3%	+2.4%
MERCED	4,458	4,402	98.7%	5,027	4,966	98.8%	-0.1%
MODOC	122	117	95.9%	113	107	94.7%	+1.2%
MONO	122	121	99.2%	107	103	96.3%	+2.9%
MONTEREY	6,020	5,955	98.9%	5,929	5,869	99.0%	-0.1%
NAPA	1,803	1,766	97.9%	1,782	1,738	97.5%	+0.4%

7TH GRADE ASSESSMENT - CALIFORNIA, 2015-2016

TABLE 4: NUMBER AND PERCENTAGE OF STUDENTS WITH PERTUSSIS BOOSTER VACCINATION AND PERCENTAGE POINT CHANGE COMPARED TO LAST YEAR, BY COUNTY

	2015-16			2014-15			1 YEAR % POINT CHANGE
	TOTAL STUDENTS	NUMBER W/ PERTUSSIS VACC	PERCENT	TOTAL STUDENTS	NUMBER W/ PERTUSSIS VACC	PERCENT	PERCENT
STATE TOTAL	496,805	485,911	97.8%	489,643	478,689	97.8%	0.0%
COUNTY							
NEVADA	817	717	87.8%	849	726	85.5%	+2.3%
ORANGE	41,545	40,684	97.9%	40,786	39,839	97.7%	+0.2%
PLACER	5,666	5,446	96.1%	5,513	5,201	94.3%	+1.8%
PLUMAS	182	163	89.6%	160	149	93.1%	-3.5%
RIVERSIDE	34,498	33,897	98.3%	32,838	32,202	98.1%	+0.2%
SACRAMENTO	17,376	16,766	96.5%	18,135	17,490	96.4%	+0.1%
SAN BENITO	872	851	97.6%	886	879	99.2%	-1.6%
SAN BERNARDINO	31,891	31,167	97.7%	31,933	31,192	97.7%	0.0%
SANDIEGO	39,891	38,881	97.5%	39,774	38,697	97.3%	+0.2%
SAN FRANCISCO	5,945	5,590	94.0%	4,986	4,948	99.2%	-5.2%
SAN JOAQUIN	11,288	11,067	98.0%	11,560	11,414	98.7%	-0.7%
SAN LUIS OBISPO	3,100	3,002	96.8%	2,692	2,555	94.9%	+1.9%
SAN MATEO	8,646	8,552	98.9%	8,369	8,273	98.9%	0.0%
SANTA BARBARA	5,456	5,351	98.1%	6,078	5,951	97.9%	+0.2%
SANTA CLARA	25,293	24,943	98.6%	23,879	23,632	99.0%	-0.4%
SANTA CRUZ	3,410	3,219	94.4%	3,252	3,086	94.9%	-0.5%
SHASTA	2,147	2,014	93.8%	2,137	1,983	92.8%	+1.0%
SIERRA	39	38	97.4%	34	34	100.0%	-2.6%
SISKIYOU	460	426	92.6%	404	370	91.6%	+1.0%
SOLANO	4,582	4,527	98.8%	5,143	5,055	98.3%	+0.5%
SONOMA	5,735	5,532	96.5%	5,892	5,715	97.0%	-0.5%
STANISLAUS	8,531	8,327	97.6%	8,691	8,470	97.5%	+0.1%
SUTTER	1,698	1,581	93.1%	1,722	1,637	95.1%	-2.0%
TEHAMA	836	814	97.4%	843	811	96.2%	+1.2%
TRINITY	129	120	93.0%	108	96	88.9%	+4.1%
TULARE	7,915	7,810	98.7%	7,832	7,729	98.7%	0.0%
TUOLUMNE	472	408	86.4%	411	372	90.5%	-4.1%
VENTURA	11,508	11,188	97.2%	11,239	10,802	96.1%	+1.1%
YOLO	2,469	2,418	97.9%	2,282	2,240	98.2%	-0.3%
YUBA	1,068	1,045	97.8%	1,650	1,598	96.8%	+1.0%

7TH GRADE ASSESSMENT - CALIFORNIA, 2015-2016

TABLE 5: NUMBER AND PERCENTAGE OF STUDENTS WITH PBE AND PERCENTAGE POINT CHANGE COMPARED TO LAST YEAR,
BY COUNTY

	TOTAL STUDENTS	STUDENTS WITH PBE							
		PBE TYPE				TOTAL PBEs			
		HEALTH CARE PRACTITIONER COUNSELED		RELIGIOUS		2015-16		2014-15	1 YEAR % POINT CHANGE
		NUMBER	PERCENT	NUMBER	PERCENT	NUMBER	PERCENT	PERCENT	
STATE TOTAL	496,805	5,132	1.03%	3,099	0.62%	8,231	1.66%	2.09%	-0.43%
COUNTY									
ALAMEDA	18,501	104	0.56%	54	0.29%	158	0.85%	1.81%	-0.96%
ALPINE	8	0	0.00%	1	12.50%	1	12.50%	0.00%	+12.50%
AMADOR	332	10	3.01%	7	2.11%	17	5.12%	4.24%	+0.88%
BUTTE	2,542	42	1.65%	37	1.46%	79	3.11%	3.93%	-0.82%
CALAVERAS	409	17	4.16%	13	3.18%	30	7.33%	6.00%	+1.33%
COLUSA	340	1	0.29%	0	0.00%	1	0.29%	1.93%	-1.64%
CONTRA COSTA	14,498	108	0.74%	27	0.19%	135	0.93%	1.28%	-0.35%
DEL NORTE	302	3	0.99%	21	6.95%	24	7.95%	8.77%	-0.82%
EL DORADO	2,195	64	2.92%	38	1.73%	102	4.65%	4.30%	+0.35%
FRESNO	15,766	90	0.57%	69	0.44%	159	1.01%	1.13%	-0.12%
GLENN	423	4	0.95%	0	0.00%	4	0.95%	1.92%	-0.97%
HUMBOLDT	1,413	62	4.39%	63	4.46%	125	8.85%	8.86%	-0.01%
IMPERIAL	2,302	4	0.17%	2	0.09%	6	0.26%	0.57%	-0.31%
INYO	214	3	1.40%	0	0.00%	3	1.40%	1.65%	-0.25%
KERN	13,580	86	0.63%	86	0.63%	172	1.27%	1.85%	-0.58%
KINGS	2,157	2	0.09%	6	0.28%	8	0.37%	0.62%	-0.25%
LAKE	692	17	2.46%	9	1.30%	26	3.76%	4.28%	-0.52%
LASSEN	289	6	2.08%	14	4.84%	20	6.92%	14.16%	-7.24%
LOS ANGELES	118,060	1,032	0.87%	604	0.51%	1,636	1.39%	1.71%	-0.32%
MADERA	2,319	20	0.86%	6	0.26%	26	1.12%	1.72%	-0.60%
MARIN	3,320	68	2.05%	2	0.06%	70	2.11%	2.65%	-0.54%
MARIPOSA	140	7	5.00%	1	0.71%	8	5.71%	3.82%	+1.89%
MENDOCINO	1,013	37	3.65%	12	1.18%	49	4.84%	8.68%	-3.84%
MERCED	4,458	27	0.61%	6	0.13%	33	0.74%	1.11%	-0.37%
MODOC	122	0	0.00%	5	4.10%	5	4.10%	2.65%	+1.45%
MONO	122	0	0.00%	0	0.00%	0	0.00%	3.74%	-3.74%
MONTEREY	6,020	28	0.47%	24	0.40%	52	0.86%	0.96%	-0.10%
NAPA	1,803	16	0.89%	7	0.39%	23	1.28%	2.19%	-0.91%
NEVADA	817	76	9.30%	21	2.57%	97	11.87%	14.13%	-2.26%

7TH GRADE ASSESSMENT - CALIFORNIA, 2015-2016

TABLE 5: NUMBER AND PERCENTAGE OF STUDENTS WITH PBE AND PERCENTAGE POINT CHANGE COMPARED TO LAST YEAR,
BY COUNTY

	TOTAL STUDENTS	STUDENTS WITH PBE							
		PBE TYPE				TOTAL PBEs			
		HEALTH CARE PRACTITIONER COUNSELED		RELIGIOUS		2015-16		2014-15	1 YEAR % POINT CHANGE
		NUMBER	PERCENT	NUMBER	PERCENT	NUMBER	PERCENT	PERCENT	
STATE TOTAL	496,805	5,132	1.03%	3,099	0.62%	8,231	1.66%	2.09%	-0.43%
COUNTY									
ORANGE	41,545	472	1.14%	257	0.62%	729	1.75%	2.16%	-0.41%
PLACER	5,666	139	2.45%	65	1.15%	204	3.60%	5.48%	-1.88%
PLUMAS	182	14	7.69%	5	2.75%	19	10.44%	5.63%	+4.81%
RIVERSIDE	34,498	304	0.88%	182	0.53%	486	1.41%	1.73%	-0.32%
SACRAMENTO	17,376	290	1.67%	237	1.36%	527	3.03%	3.46%	-0.43%
SAN BENITO	872	6	0.69%	2	0.23%	8	0.92%	0.79%	+0.13%
SAN BERNARDINO	31,891	263	0.82%	205	0.64%	468	1.47%	2.21%	-0.74%
SAN DIEGO	39,891	460	1.15%	330	0.83%	790	1.98%	2.54%	-0.56%
SAN FRANCISCO	5,945	19	0.32%	31	0.52%	50	0.84%	0.70%	+0.14%
SAN JOAQUIN	11,288	78	0.69%	70	0.62%	148	1.31%	1.11%	+0.20%
SAN LUIS OBISPO	3,100	57	1.84%	17	0.55%	74	2.39%	5.01%	-2.62%
SAN MATEO	8,646	37	0.43%	20	0.23%	57	0.66%	0.87%	-0.21%
SANTA BARBARA	5,456	66	1.21%	28	0.51%	94	1.72%	1.92%	-0.20%
SANTA CLARA	25,293	140	0.55%	79	0.31%	219	0.87%	0.92%	-0.05%
SANTA CRUZ	3,410	111	3.26%	36	1.06%	147	4.31%	4.89%	-0.58%
SHASTA	2,147	71	3.31%	59	2.75%	130	6.05%	7.16%	-1.11%
SIERRA	39	0	0.00%	1	2.56%	1	2.56%	0.00%	+2.56%
SISKIYOU	460	8	1.74%	24	5.22%	32	6.96%	7.92%	-0.96%
SOLANO	4,582	36	0.79%	11	0.24%	47	1.03%	1.50%	-0.47%
SONOMA	5,735	136	2.37%	33	0.58%	169	2.95%	2.95%	-0.00%
STANISLAUS	8,531	132	1.55%	50	0.59%	182	2.13%	2.32%	-0.19%
SUTTER	1,698	55	3.24%	59	3.47%	114	6.71%	4.88%	+1.83%
TEHAMA	836	19	2.27%	3	0.36%	22	2.63%	3.32%	-0.69%
TRINITY	129	3	2.33%	6	4.65%	9	6.98%	11.11%	-4.13%
TULARE	7,915	61	0.77%	21	0.27%	82	1.04%	1.28%	-0.24%
TUOLUMNE	472	22	4.66%	23	4.87%	45	9.53%	9.25%	+0.28%
VENTURA	11,508	157	1.36%	89	0.77%	246	2.14%	3.73%	-1.59%
YOLO	2,469	30	1.22%	15	0.61%	45	1.82%	1.84%	-0.02%
YUBA	1,068	12	1.12%	6	0.56%	18	1.69%	3.09%	-1.40%