

Schools and Childcare Providers: Medical Exemption Requirements

California Department of Public Health
Immunization Branch

April 2021



Webinar Tech Tips!

1. Listen to today's webinar through the computer audio.

Audio and Video Connection

Select Audio Connection Select Video Connection

Call Using Computer No Video

Speakers (High Definition Au...
Microphone (High Definition ...

We can't detect a video camera device.
Make sure your camera device is
connected and try again.

[More options](#)

Connect Audio

2. If you cannot connect through the computer audio, have WebEx call you.

Audio and Video Connection

Select Audio Connection Select Video Connection

Call Me No Video

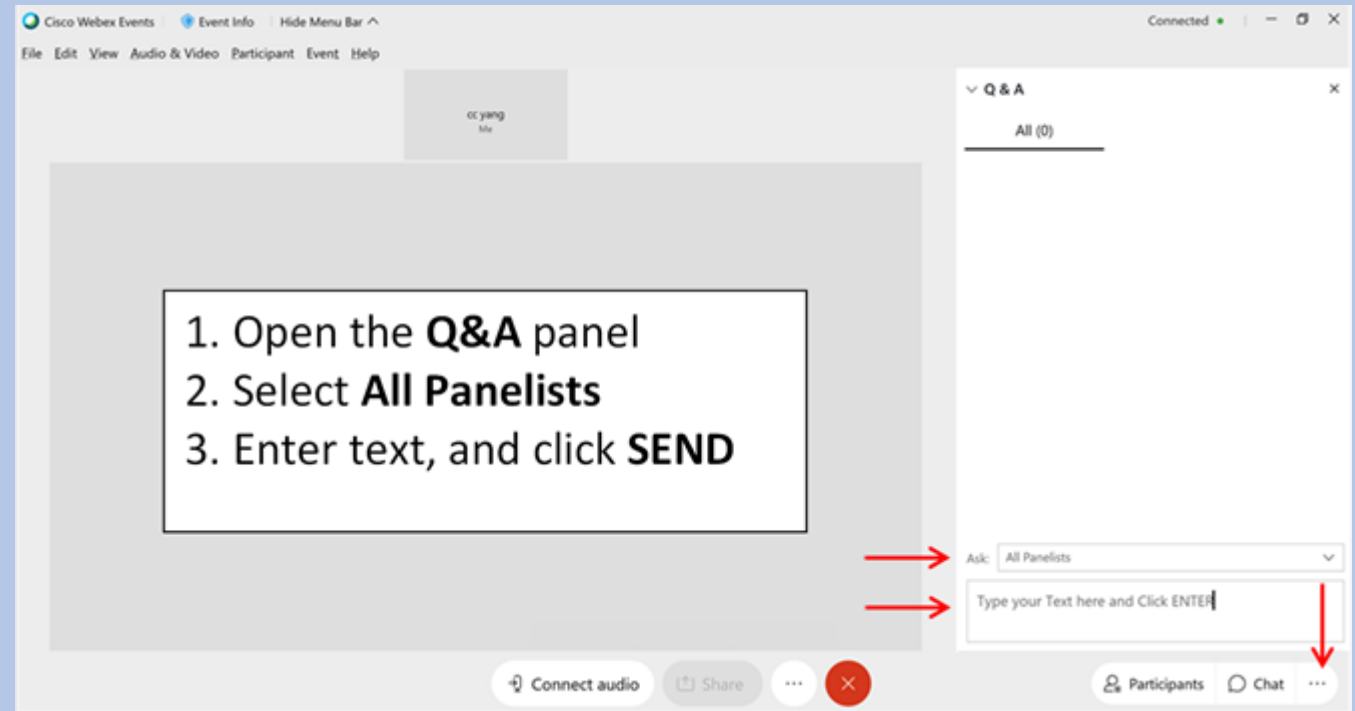
+1 877-243-8832

We can't detect a video camera device.
Make sure your camera device is
connected and try again.

Connect Audio

Today's Webinar . . .

- The slides from this presentation will be available on the ShotsForSchool.org website in the next couple weeks (April 2021).
- This webinar is intended for schools and child care providers.
- During the webinar, please submit comments/questions via the Q&A panel.



Webinar Topics

- What's new with medical exemption requirements
- How to use the CAIR Medical Exemption (CAIR-ME) website
- Answers to frequently asked questions
- Medical exemption resources

What's New with Medical Exemptions:

Effective January 1, 2021, all new medical exemptions (MEs) must be issued through the CAIR-ME web site.

Existing MEs issued before 2021 are:

- Not included in the CAIR-ME website
- Valid for continuing and transfer students until the earliest of the following:
 - The child enrolls in the next grade span (TK/K-6th grade or 7th-12th grade).
 - The expiration date specified in a temporary medical exemption.
 - Revocation of the exemption when the issuing physician has been subject to disciplinary action from the physician's licensing entity.

What's New with Medical Exemptions:

CAIR-ME benefits include:

- ✓ Allowing CDPH to monitor exemptions when:
 - Child care/school sites report immunization rates <95% or don't report
 - Physicians submit 5 or more MEs in a calendar year
 - Review is necessary to protect public health
- ✓ Allowing CDPH to revoke exemptions and parents to appeal the revocation
- ✓ Preventing physicians from issuing MEs if they are on probation/have a pending accusation for immunization-related practices, or are deemed a public health risk
- ✓ Providing important communications to parents, physicians, schools/childcare facilities and health departments regarding the status of exemptions

Medical Exemptions: What's New

CDPH will review exemptions in CAIR-ME when:

- Child care/school sites report immunization rates <95% or do not report
- Physicians submit 5 or more MEs in a calendar year
- Review is deemed necessary to protect public health

Allows CDPH to revoke exemptions issued in CAIR-ME and parents to appeal the revocation

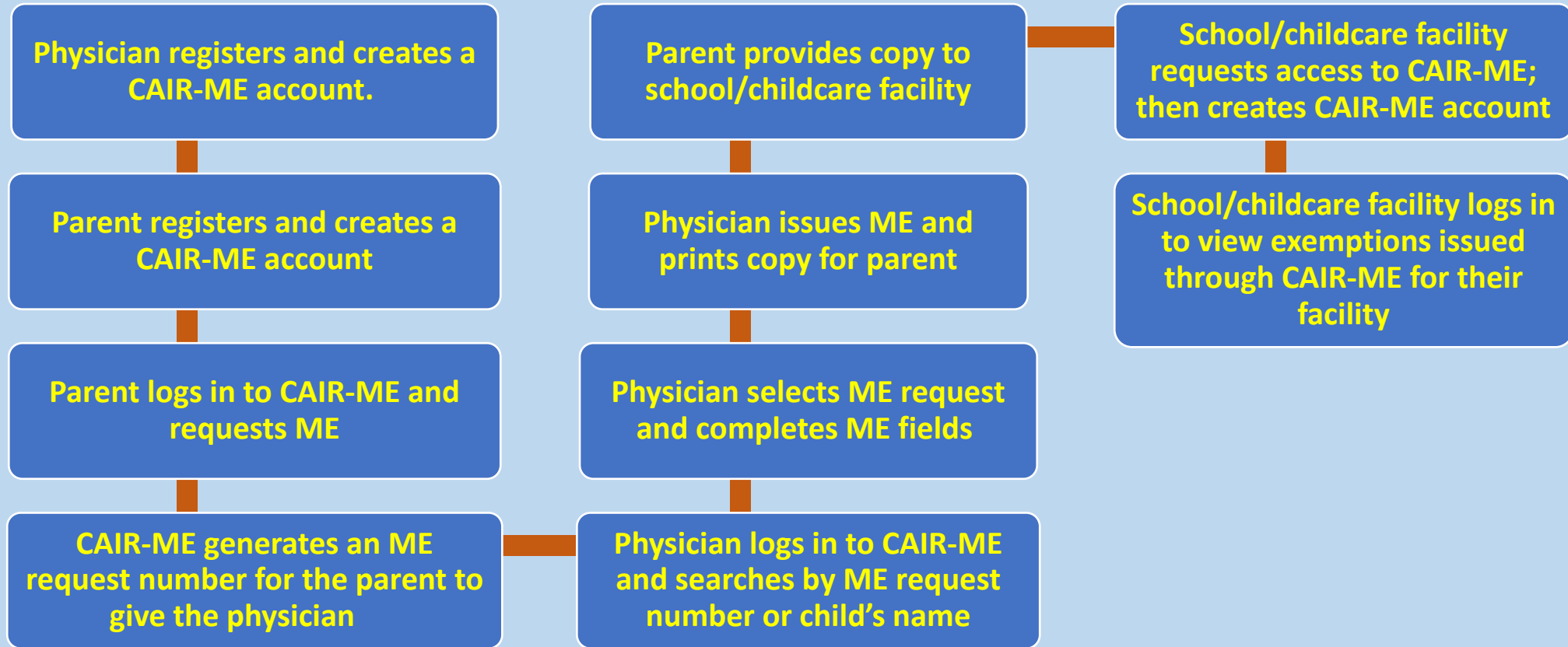
Prevents physicians from submitting new MEs if they are on probation or have a pending accusation for immunization-related practices or are deemed a public health risk.

Medical Exemptions: What's New

CAIR-ME Reviewer Team will be responsible for identifying MEs that are not consistent with the relevant standard of care or do not meet applicable criteria from:

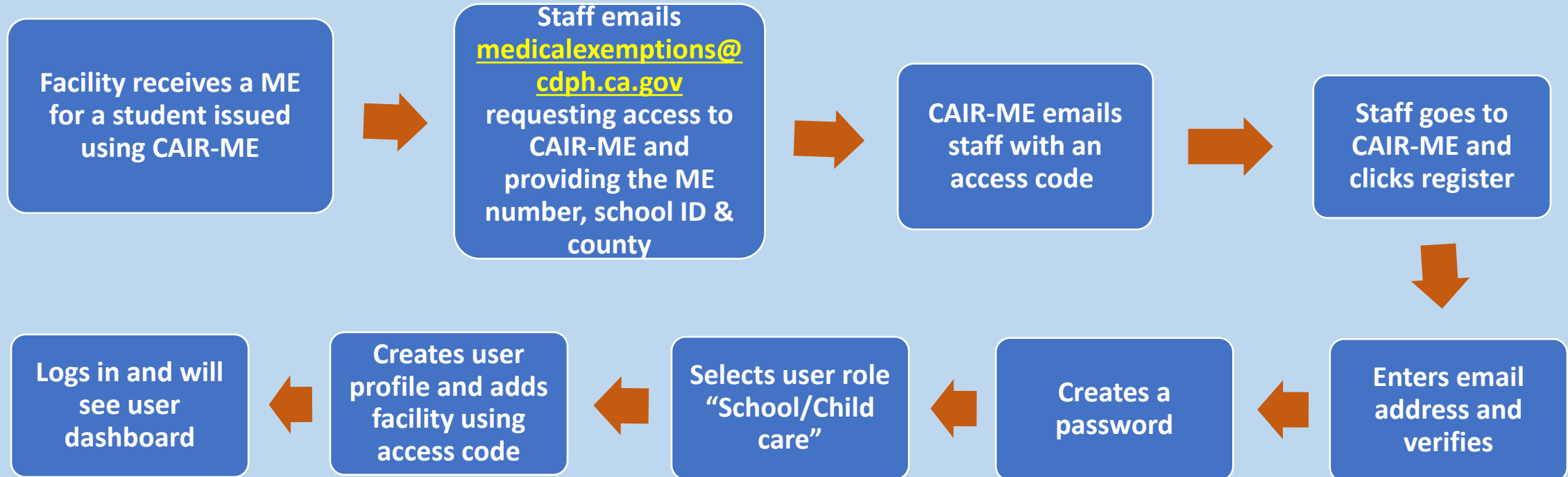
- Centers for Disease Control and Prevention (CDC)
- Advisory Committee on Immunization Practices (ACIP)
- American Academy of Pediatrics (AAP)

Overview of the Process for Issuing a ME

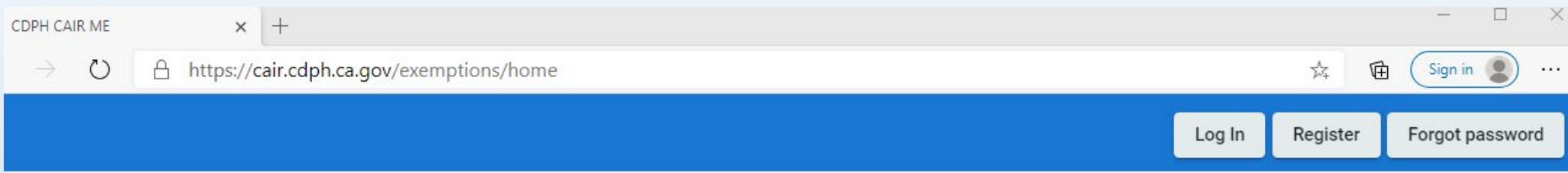


Creating and Using a CAIR-ME Account

Creating a School/Child Care CAIR-ME Account



CAIR-ME Website Homepage: <https://CAIR.cdph.ca.gov/exemptions>



The California Immunization Registry Medical Exemption web site is a secure site for physicians to issue medical exemptions for children in school or child care. Parents use the same site to request medical exemptions for their children. Schools and child care facilities can monitor and get updates for medical exemption attendance.

TIPS:

- Recommended browsers:
 - ❖ Google Chrome OR Microsoft Edge
- Enable pop-ups for CAIR-ME site
- **Website does not work with Internet Explorer**



California Immunization Registry Medical Exemption Web Site User Access Agreement

CAIR Medical Exemption Web Site User Terms & Conditions

The California Immunization Registry (CAIR) is a secure, computerized online information system developed to assist medical providers and other approved agencies to track and review immunization information and TB test results for individuals, assess immunization needs and remind/recall patients, avoid unnecessary or redundant immunizations, and control disease outbreaks. As part of the California Immunization Registry, the Medical Exemption (CAIR-ME) web site allows medical providers to enter medical exemptions from immunizations for school and child care and permits other approved agencies to track the status of these exemptions. Information in CAIR is only available to authorized users. Based on the access level approved, this Agreement will allow the User to access, view, add, or modify medical exemption information in CAIR-ME via the web interface.

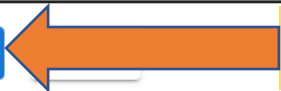
California Health and Safety Code Section 120440 limits access to the California Immunization Registry (CAIR) to authorized users who require the information for the purpose of providing immunization services as specified.

As a condition of authorized access to the California Immunization Registry Medical Exemption web site, I agree:

- To comply with California Health and Safety Code Section 120440 regarding immunization registry use, as well as State and Federal laws and HIPAA regulations regarding maintaining the confidentiality of patient information.
- To access information in CAIR-ME only as needed to perform immunization/exemption-related activities for individuals presenting to my organization for services or enrollment for school/child care.
- To keep my user password confidential.
- To only use my own password to access CAIR-ME.
- To maintain the privacy and confidentiality of information in CAIR-ME.
- To ensure no misuse or wrongful disclosure of information in CAIR-ME.
- To report any activity that may compromise the protection and privacy of the information in CAIR-ME.
- To not communicate, publish, and/or otherwise provide or make public any information regarding persons enrolled in the registry and their immunization status, except:
 1. To patients who request their own immunization records,
 2. To individuals authorized by law to access immunization registry information, or
 3. When records are presented with no associated identifying information.

To assure appropriate usage of CAIR-ME, a permanent electronic record will be created that will log each User's access into any registry client record. Any unauthorized release of confidential information by a User may revoke the User's access to CAIR-ME.

I Agree to the User Access Agreement



STEP 1: Click the "I Agree to the User Agreement" button

STEP 2: Enter your email address and click "Send verification code." Do not close the window.

STEP 3: Check your email. Enter the 6-digit verification code from your email and click the "Verify Code" button.

STEP 4: Create a Password

- Must be a minimum of 8 characters
- Must contain at least 3 of the following:
 - Uppercase letter
 - Lowercase letter
 - Number
 - Symbol

A screenshot of a mobile application interface for the California Department of Public Health. At the top left is a back arrow and the text "Cancel". The logo for the California Department of Public Health is centered at the top. Below the logo is a text input field labeled "Email Address". Underneath the input field is a blue button labeled "Send verification code". Below the button are two more text input fields: "New Password" and "Confirm New Password". At the bottom of the screen is a light blue button labeled "Create".

A screenshot of a mobile application interface for the California Department of Public Health. At the top left is a back arrow and the text "Cancel". The logo for the California Department of Public Health is centered at the top. Below the logo is the text "Verification code has been sent. Please copy it to the input box below." followed by a greyed-out text input field. Below that is a text input field labeled "Verification Code". Underneath are two blue buttons: "Verify code" and "Send new code". Below the buttons are two more text input fields: "New Password" and "Confirm New Password".

A screenshot of a mobile application interface for the California Department of Public Health. At the top left is a back arrow and the text "Cancel". The logo for the California Department of Public Health is centered at the top. Below the logo is the text "The code has been verified. You can now continue." followed by a greyed-out text input field. Below that is a blue button labeled "Change". Underneath the button are two text input fields, each containing a series of dots to represent a password. At the bottom of the screen is a blue button labeled "Create".

Welcome! Select a User Role.

Your account has been created for the California Immunization Registry Medical Exemption web site. Let's set up your user profile.
Are you registering as a parent or guardian, a physician, or a school or child care facility user?

Parent or Guardian

Physician

School or Child Care Facility

STEP 5: Click the "School or Child Care Facility" button



logged

Set Up Your User Profile

Please set up your user profile. You can update your information at any time.

First Name *

Cindy

Last Name *

School

Email Address

cindymereview+school4@gmail.com

Phone Number *

Extension

Add a school or child care facility to receive notifications regarding medical exemptions for children attending the school or child care facility. You must be associated with at least one school or child care facility.

[Add a School/Child Care Facility](#)

Associated Schools & Child Care Facilities

[Save](#)

Step 6: Set Up Your User Profile

- Check to ensure your name, email address and phone number are correct.
- Click on "Add a School/Child Care Facility"

Are you registering as a parent or guardian, a physician, or a school or child care facility user?

Enter a School or Child Care Facility Access Code

Enter the access code provided through email to your school/child care facility

Access Code *

Enter the Medical Exemption number for any exemption associated with your child

Medical Exemption Number *

Submit

Cancel

Step 7: Update Your Profile:

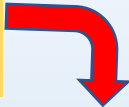
- Enter the access code you received from medicalexemptions@cdph.ca.gov
- Enter the Medical Exemption Number from the exemption you received from the parent
- Click "Submit"



CAIR

Medical Exemptions
from Immunizations
for School & Child Care

Click here to update your profile and add facilities



logged in: _____ .com

Click the dashboard button to return to this page

 Dashboard

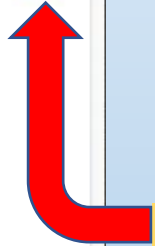
My Dashboard

Search for a Medical Exe...
Search by number or [View Exemption](#)

Enter the child's name or ME # to view an exemption

Show/Hide Advanced Filters 

[Filter Search Results](#) [Clear Filters](#)



Click the "i" button for information related to the webpage

The screenshot shows the CAIR Medical Exemptions dashboard. At the top, there is a blue header with the CAIR logo and the text "Medical Exemptions from Immunizations for School & Child Care". A "Log Out" button is in the top right. Below the header, a sidebar on the left contains a "Dashboard" link. The main content area is titled "My Dashboard" and features a search bar with the placeholder "Search for a Medical Exe..." and a "View Exemption" button. Below the search bar, there are filter options: "Show/Hide Advanced Filters", "My Schools/Child Care Facilities:", "Date Range of ME Issued:" (with "From Date" and "To Date" input fields), and "ME Status" (with a dropdown menu). At the bottom of the filter section, there are two buttons: "Filter Search Results" and "Clear Filters".

To search for a specific ME:

Enter the name or ME Number and click on the name when it appears to enter it in the search field. Then click "View Exemption"

To search MEs issued through CAIR-ME for your facility:

Select fields from the following:

- ✓ School/Child Care facility name and ID from drop down list
- ✓ Range of dates when MEs were issued
- ✓ MEs by status

Click the "Filter Search Results"

ME Status

Issued

Filter Search Results

Clear Filters

Filtered Medical Exemptions

Export to Excel

ME Number	Child's Name	Date of Birth	ME Issued Date	Parent	Status
100790	Lawlor, Danny	04/03/2012	12/27/2020	Lawlor	
100647	Baum, Dorothy	04/03/2015	12/17/2020	Parent	
100605	Singer, Bobby	06/08/2005	12/14/2020	Parent	

Search results for your facility:

- Listed at the bottom of the page
- Can be exported as an excel spreadsheet

NOTE: Report contains PHI so only download and keep what you need.

Child's Name: Morene Ann Muntervary

Date of Birth: 04/08/2019

ME Number: 100756

ME Status: Issued

ME Details

Medical Exemption Details

Child & Parent Information

Child's Name: Morene Muntervary

Parent/Guardian: Dave Muntervary
1029 Mitchell Way
Sacramento, CA 95819
(777) 777-7777

✓ Attestation Complete

✓ Authorization Complete

School Information

School/Child Care Facility: Achieve Academy
1700 28th Ave.
Oakland, CA 94621-2455
(111476)

Grade Span: Child Care/Preschool

Admission Date: 09/15/2021

Physician Information

Issuing Physician: HASSA
1092 H
Sacram

Date you started treating the child as a patient: 06/08/

Are you the child's Primary Care Physician? Yes

Medical Condition Information

Medical Basis for Exemption: Encephalopath
Patient Medically Exempt for: DTaP, Tdap
Onset Date: 04/18/2020
Exemption Expiration Date: Permanent, ex

Medical Basis for Exemption: Other Condition
Other Condition Specified: some other condition
Patient Medically Exempt for: DTaP, HepB, Hib, IPV, MMR, Tdap, VAR/VZV
Onset Date: 09/08/2020
Exemption Expiration Date: Temporary, expiring 12/20/2021

Attestation and Authorization

✓ Attestation Complete

✓ Authorization Complete

Information Displayed in CAIR-ME:

- The information on the form should match the information you see in CAIR-ME
- You won't see the actual form displayed in CAIR-ME
- If your school/child care facility is different than what is on the form, the parent will need to log in to CAIR-ME, update the facility information and show proof of the change. You will then be able to see the ME listed for your facility.

Set Up Your User Profile

Please set up your user profile. You can update your information at any time.

First Name *
Cindy

Last Name *
School

Email Address
cindymereview+school4@gmail.com

Phone Number * Extension


Add a school or child care facility to receive notifications regarding medical exemptions for children attending the school or child care facility. You must be associated with at least one school or child care facility.

[Add a School/Child Care Facility](#)

Associated Schools & Child Care Facilities

[Save](#)

To add school/child care facilities to your profile:

- Click on the profile symbol  at the top of your dashboard
- Click the “Add a School/Child Care Facility” button
- Enter the ME # and school ID from the child’s ME
- Click “Save” and you will then be able to see MEs for the new facility

Email Address

Phone Number *

(123) 326-3215

Extension

Add a school or child care facility to receive notifications regarding medical exemptions for associated with at least one school or child care facility.

[Add a School/Child Care Facility](#)

Associated Schools & Child Care Facilities

School/Child Care Facility	Address	District	School/Child Care Facility ID	Remove
4th R - Phoebe Hearst	1410 60th Street Sacramento, CA 95819		343604900	
Phoebe A. Hearst Elementary	1410 60th St. Sacramento, CA 95819-4221	Sacramento City Unified	6034227	

[Save](#)

Associated School/Child Care Facility

After adding the facility, it will appear in your list and you can search/view all exemptions for the facility



CAIR

Medical Exemptions
from Immunizations
for School & Child Care

Medical Exemption FAQs for Schools & Child Care



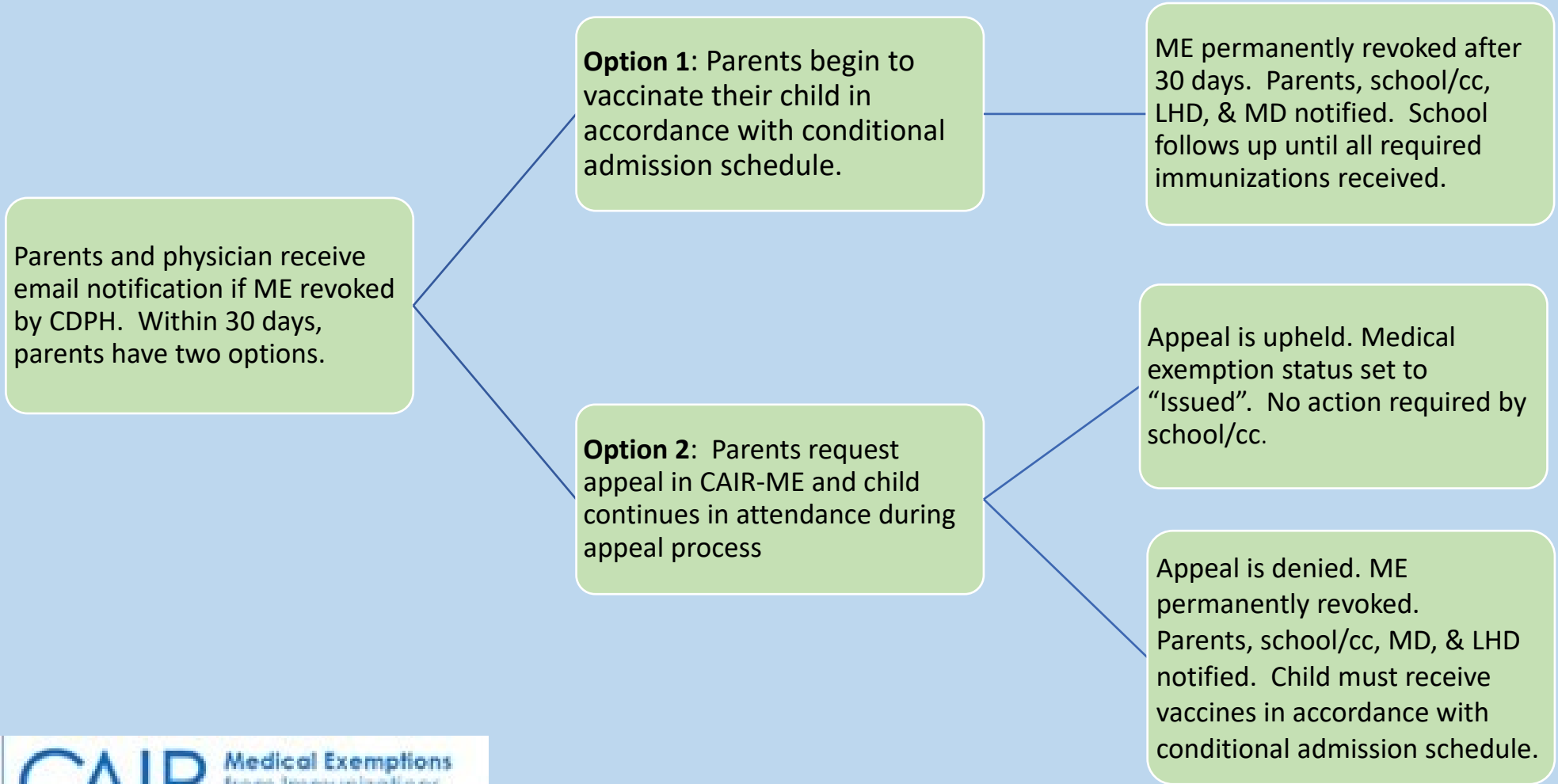
CAIR

Medical Exemptions
from Immunizations
for School & Child Care

What notifications are issued by CAIR-ME?

Action	Notification Recipient
Request for medical exemption	Parent
Medical exemption issued	Parent, issuing physician
Medical exemption revoked by CDPH	Parent, issuing physician
Appeal submitted/appeal upheld	Parent
Medical exemption permanently revoked (no appeal in 30 days or appeal denied)	Parent, issuing physician, LHD, school/child care facility

What are the options when a ME revoked?



What new resources have been added to ShotsForSchool.org in early 2021?

- Updated California Immunization Handbook, 11th edition
- Medical exemption FAQs and other FAQs
- Updated Pre-K and K-12 Guides
- CAIR-ME physician webinar
- Revised “Letter to Parents: Immunizations Needed”
- Coming soon: Detailed Parent Instructions

Need Help?

Assistance with Medical Exemptions:

Medicalexemptions@cdph.ca.gov

IT issues with the web site:

Medicalexemptions@cdph.ca.gov

CAIR-ME Help Desk: (844) 699-4225

Medical Exemption FAQs for Schools & Child Care

Can a doctor print a copy of the medical exemption form and complete it by hand?

No. The medical exemption form can only be completed, issued, and printed from CAIR-ME. Only the issuing physician can print a medical exemption.

Medical Exemption FAQs for Schools & Child Care

Parents are enrolling their child in 7th grade. They report having a medical exemption for the child but lost it. Can I look the exemption up in CAIR-ME and print it?

The parents must provide a copy of the 2-page exemption form to the facility. Schools and child care facilities with a CAIR-ME account can log in and view the information on ME forms for their facility. Schools and child care facilities cannot print a copy of the exemption from CAIR-ME at this time.

Medical Exemption FAQs for Schools & Child Care

A child is enrolling in TK at our school and has a medical exemption issued more than 12 months prior to the enrollment date. Can I accept the exemption?

No. A medical exemption may be issued in CAIR-ME no more than 12 months before a child first enters a grade span (grade spans are birth-preschool, TK/K-6th grade and 7th-12th grade).

Medical Exemption FAQs for Schools & Child Care

Can I use my CAIR2 login to access CAIR-ME?

No. Access to CAIR-ME requires a separate login. Medical exemptions issued in CAIR-ME are not visible in CAIR2 at this time. Notes entered in CAIR2 on a patient record, such as history of chickenpox, are not a valid medical exemption.

Medical Exemption FAQs for Schools & Child Care

The parents submitted a permanent medical exemption when the child enrolled at our center at 6 months of age. How long is the exemption good for?

A medical exemption filed at a pre-kindergarten facility or school remains valid until the earliest of:

- The child enrolling in the next grade span (TK/K-6th grade, 7th-12th grade)
- The expiration date specified in a temporary medical exemption
- Revocation of the exemption because the issuing physician has been subject to disciplinary action from the physician's licensing entity.

Medical Exemption FAQs for Schools & Child Care

A child at our facility has a temporary medical exemption. What type of follow up is required?

Children with temporary medical exemptions must be followed up to confirm that either:

- they have received exempted doses by the time the exemption expires, or that
- a new exemption has been issued using CAIR-ME by the time the TME expires.

Medical Exemption FAQs for Schools & Child Care

Where can I find more information about the requirements for exemptions written prior to January 1, 2021?

Please see FAQs about “Medical Exemptions Issued Prior to 2021” at <https://www.shotsforschool.org/laws/exemptions/> and the California Immunization Handbook, pages 14-15.

Medical Exemption FAQs for Schools & Child Care



NEW!

Are medical exemptions issued before January 1, 2020 by physicians who have been disciplined by their medical licensing board valid?

No, these medical exemptions are no longer valid after:

- the beginning of the 2021-2022 school year for schools, or
- September 1, 2021 for child care facilities.

To find out if a physician has been disciplined, please look up an issuing physician's name or medical license number on the list of disciplined physicians. Additional details in the letter to child care facilities and schools.

Medical Exemption FAQs for Schools & Child Care

Does a child with an existing medical exemption in CAIR-ME need a new exemption if the child enrolls in a new school or child care facility within the same grade span?

No. While a new medical exemption does not need to be issued, the school or child care facility information listed in CAIR-ME for the exemption must be the same as the new school or child care facility. Parents must log in to CAIR-ME, update the facility information, and show proof of the change to facility. Parents can print a copy of the changes and the facility can log in to CAIR-ME to confirm.

Medical Exemption FAQs for Schools & Child Care

Can we create one account for all of the staff at our school or district?

No. Each staff member at a school, child care facility or school district that will be accessing CAIR-ME must have their own account.

Medical Exemption FAQs for Schools & Child Care

What should I do if I have questions about an exemption?

If you receive an exemption that you have questions about, you may email your concerns to medicalexemptions@cdph.ca.gov.

Medical Exemption FAQs for Schools & Child Care

Are the immunization requirements in effect during the pandemic?

Yes, the immunization requirements remain in effect for distance learners and other students.

Medical Exemption FAQs for Schools & Child Care

What were the main changes Senate Bill (SB) 277 (Pan, 2015) made to the immunization requirements for children entering child care or school?

Since January 1, 2016:

- Parents or guardians of students in any school or child-care facility, whether public or private, are no longer allowed to submit a personal beliefs exemption to a currently-required vaccine.
- Students are no longer required to have immunizations for entry if they attend:
 - a home-based private school or
 - an independent study program and do not receive classroom-based instruction.
- Students who have an individualized education program (IEP) should continue to receive all necessary services identified in their IEP regardless of their vaccination status.
- However, parents or guardians must continue to provide immunization records for these students to their schools, and schools must continue to maintain and report records of immunizations that have been received for these students.

Questions and Answers